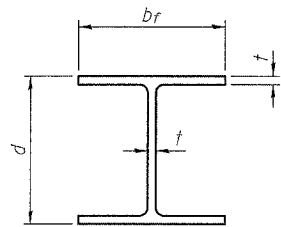
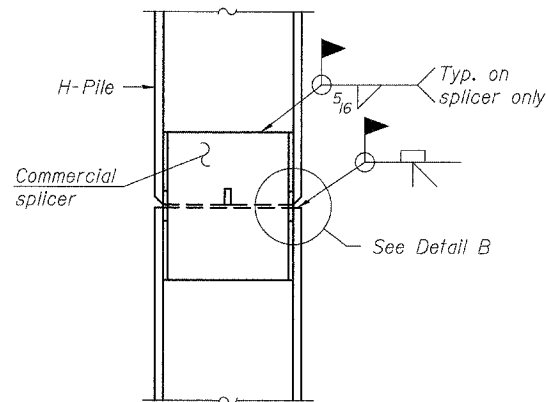


Contract # 98775

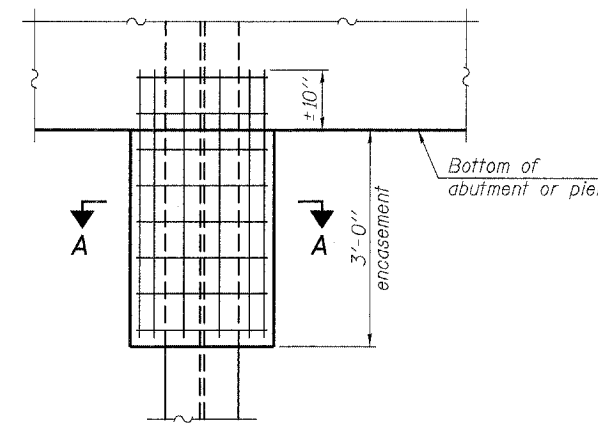


**STEEL PILE TABLE**

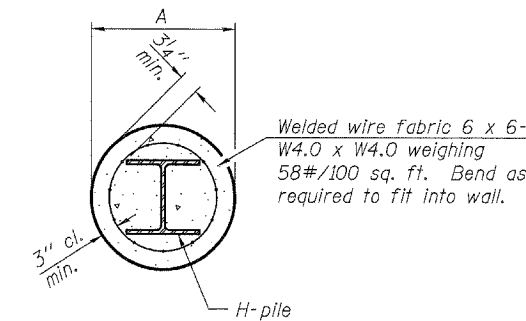
Designation	Depth <i>d</i>	Flange width <i>b<sub>f</sub></i>	Web and Flange thickness <i>t</i>	Encasement diameter <i>A</i>
HP 14x117	14 1/4"	14 7/8"	13/16"	30"
x102	14"	14 3/4"	1/16"	30"
x89	13 7/8"	14 3/4"	5/8"	30"
x73	13 5/8"	14 5/8"	1/2"	30"
HP 12x84	12 1/4"	12 1/4"	1/16"	24"
x74	12 8/8"	12 1/4"	5/8"	24"
x63	12"	12 1/8"	1/2"	24"
x53	11 3/4"	12"	7/16"	24"
HP 10x57	10"	10 1/4"	9/16"	24"
x42	9 3/4"	10 1/8"	7/16"	24"
HP 8x36	8"	8 1/8"	7/16"	18"



**ELEVATION**



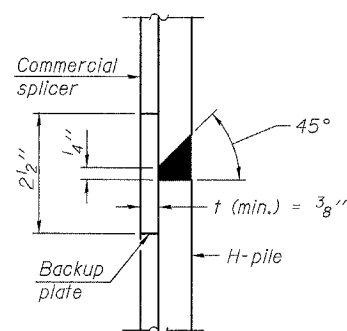
**ELEVATION**



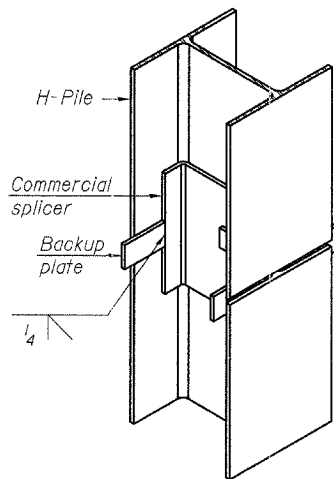
**SECTION A-A**

Note:  
Forms for encasement may be omitted when soil conditions permit.

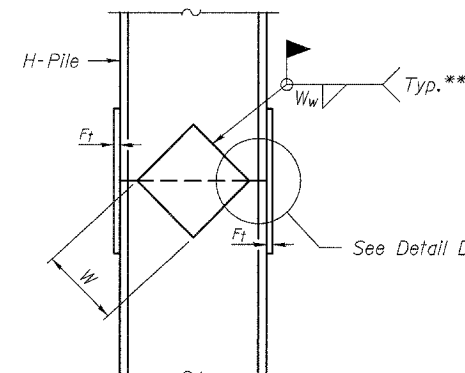
**PILE ENCASEMENT**



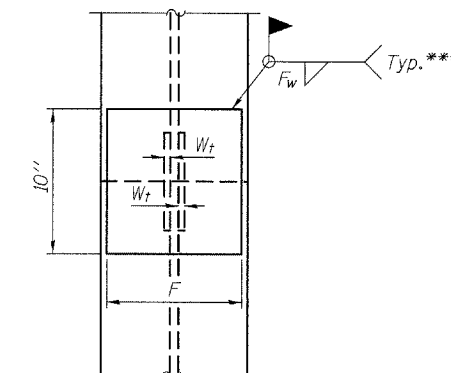
**DETAIL "B"**



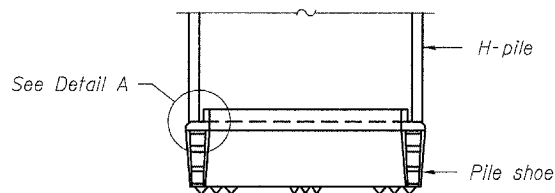
**ISOMETRIC VIEW**



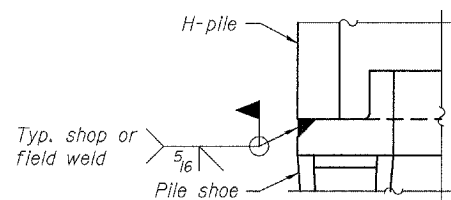
**ELEVATION**



**END VIEW**

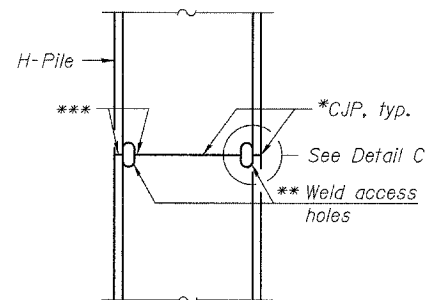


**ELEVATION**



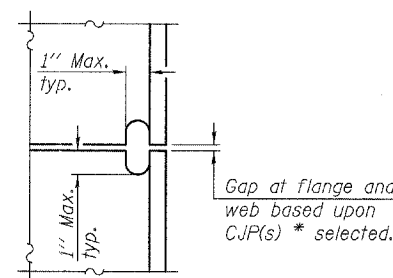
**DETAIL A**

**H-PILE SHOE ATTACHMENT**

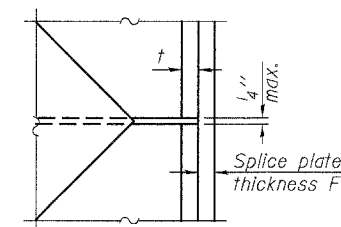


**ELEVATION**

**COMPLETE PENETRATION WELD SPLICE**



**DETAIL C**



**DETAIL D**

**WELDED PLATE FIELD SPLICE**

Note:  
The steel H-piles shall be according to AASHTO M270 Grade 50.

- \* Use Joint conforming to Figure 3.4 in AWS D1.1, Structure Welding Code - Steel.
- \*\* Preparation per Fig. 5.2 in AWS D1.1, Structure Welding Code - Steel.
- \*\*\* Interrupt welds 1/4" from end of each pile.

**LIN ENGINEERING, LTD.**  
Consulting Engineers  
Creston, Illinois

Designed By: JST    Checked By: MTH    Drawn By: A.J.F.  
Date: 12/06    File: 028-0076.DGN

REVISIONS	
NAME	DATE

ILLINOIS DEPARTMENT OF TRANSPORTATION  
**STEEL PILE DETAILS**  
ILLINOIS ROUTE 14 OVER  
ANDY CREEK  
F.A.P. ROUTE 869 - SECTION 104B-2  
FRANKLIN COUNTY  
STATION 603+80.00  
STRUCTURE NO. 028-0076