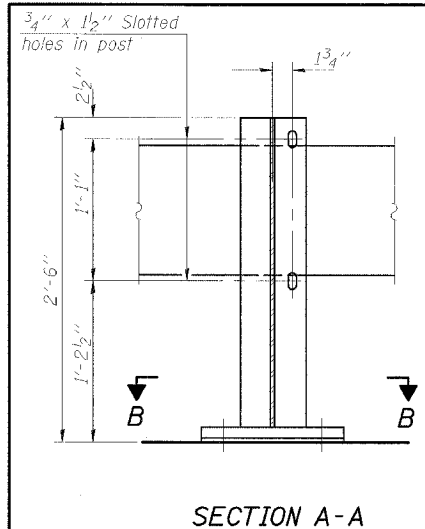
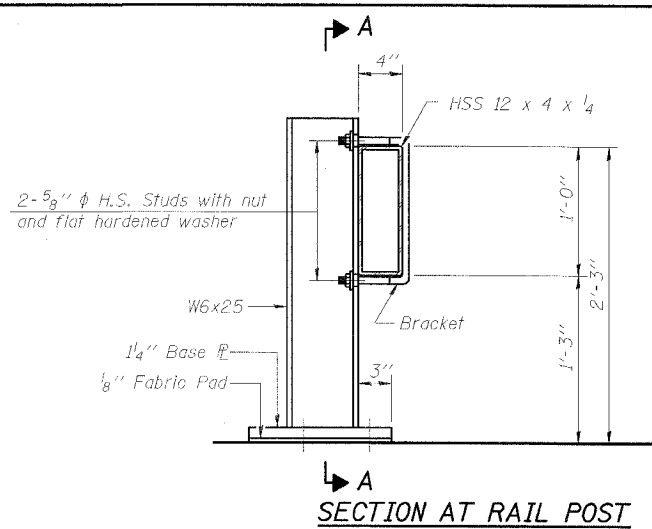


STATE OF ILLINOIS
DEPARTMENT OF TRANSPORTATION

ROUTE NO.	SECTION	COUNTY	SHEET NO.	SHEET NO.
FAP 328	*	WHITE	42	15
FED. ROAD DIST. NO.	ILLINOIS	FED. AID PROJECT		
98997			*105X1BR	

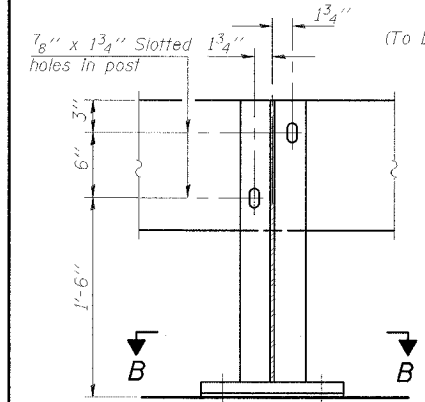


SECTION A-A



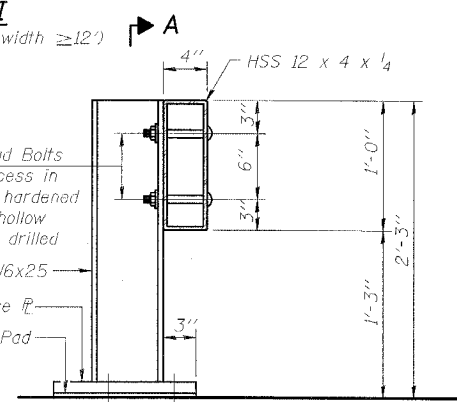
SECTION AT RAIL POST

ALTERNATE I
(To be used only for Roadway width $\geq 12'$)



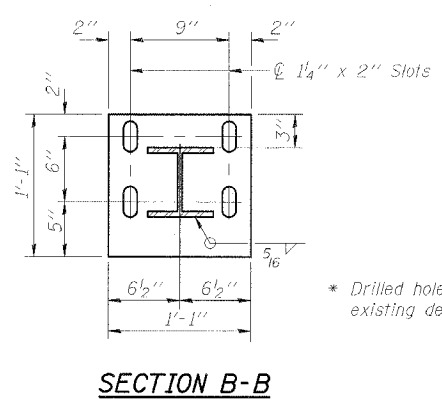
SECTION A-A

2-3/4" ϕ x 6" Round Head Bolts (With slot or approved recess in head) with locknut & flat hardened washer. 7/8" ϕ holes in hollow structural section may be drilled in the field.

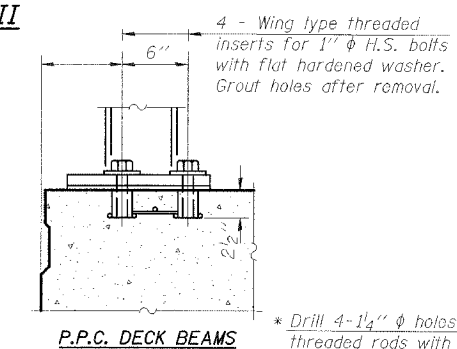


SECTION AT RAIL POST

ALTERNATE II

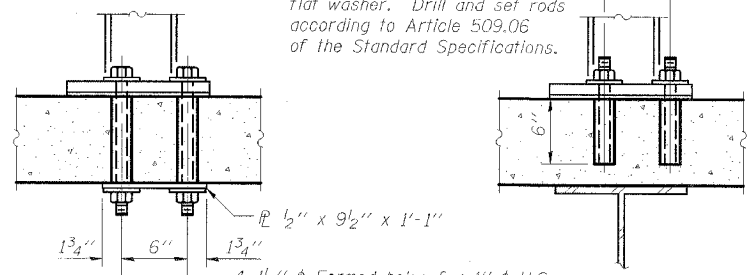


SECTION B-B

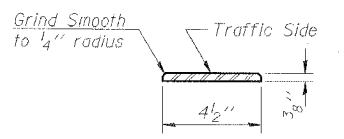


P.P.C. DECK BEAMS

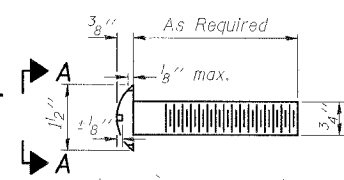
* Drill 4-1 1/4" ϕ holes for 1" ϕ threaded rods with hex nut and flat washer. Drill and set rods according to Article 509.06 of the Standard Specifications.



NEW & EXISTING DECKS
ANCHORAGE DETAILS

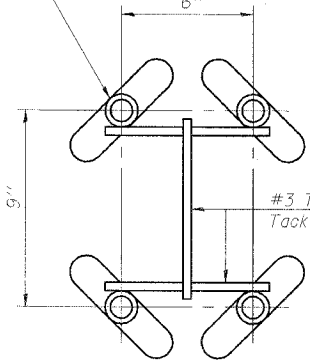


DETAIL A

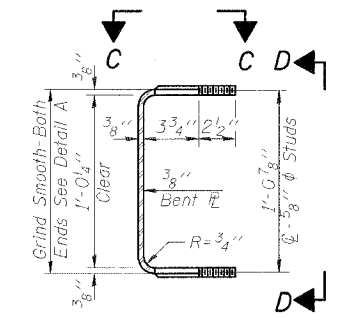


VIEW A-A
ROUND HEAD BOLT

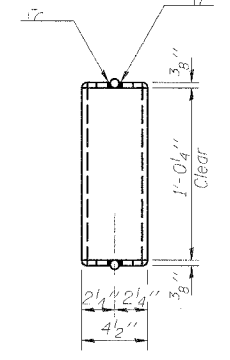
1" ϕ Flared thin slab ferrule insert. Electroplated according to ASTM B 633 Service Condition 4.



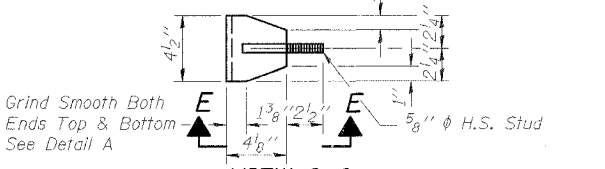
INSERT DETAIL



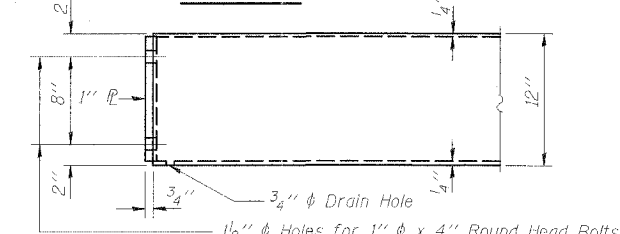
SECTION THRU BRACKET



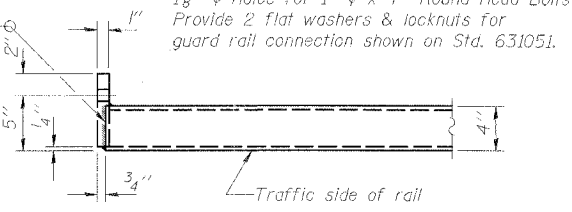
VIEW D-D



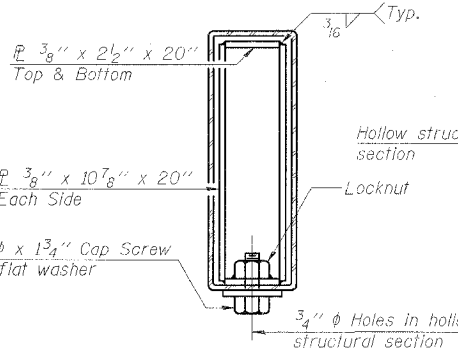
VIEW C-C



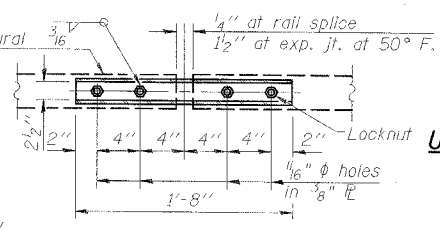
END OF RAIL DETAILS



RAIL SPLICE CONNECTION
AT EXPANSION JT.



SECTION AT RAIL SPLICE



PLAN-BOTT. SPLICE P.
TYPICAL

Notes:
See sheet 3 of 17 for Rail Post spacing.
The contact surfaces between post flange, rail and inside face of bracket for Alternate I shall be free of all lubricants.
The nut for 5/8" ϕ high strength studs used in Alternate I to connect bracket to post shall be tightened to a snug fit and given an additional one half turn.

BILL OF MATERIAL

Item	Unit	Quantity
Steel Railing (Temporary)	Foot	176

STEEL RAILING (TEMPORARY)
US 45 OVER SKILLET FORK OVERFLOW
FAP ROUTE 328 - SECTION (105X)BR
WHITE COUNTY
STATION 598+76.00
STRUCTURE NO. 097-0019

ESCA
CONSULTANTS, INC.

DESIGNED BY:	RDP	01/07
DRAWN BY:	DWH	01/07
CHECKED BY:	JMS/MTD	01/07
APPROVED BY:	RDP	04/07