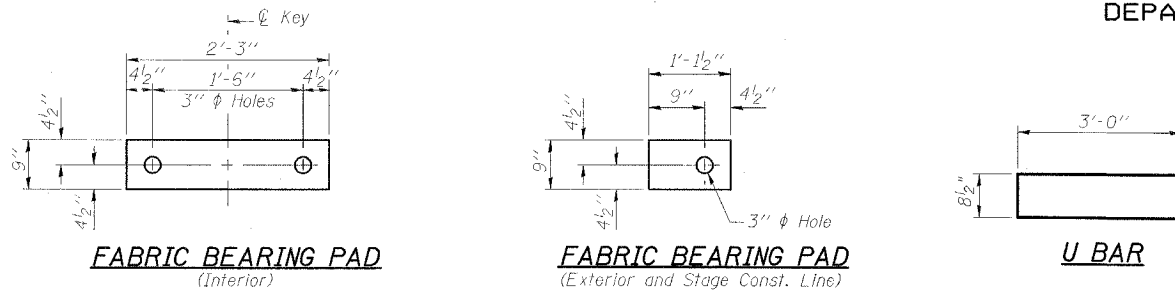


STATE OF ILLINOIS
DEPARTMENT OF TRANSPORTATION

ROUTE NO.	SECTION	COUNTY	POST MILES	SHEET NO.	SHEET NO. 6 17 SHEETS
FAP 328	*	WHITE	42	17	
FED. ROAD DIST. NO.	ILLINOIS	FED. AID PROJECT			
98997			*(105X)BR		

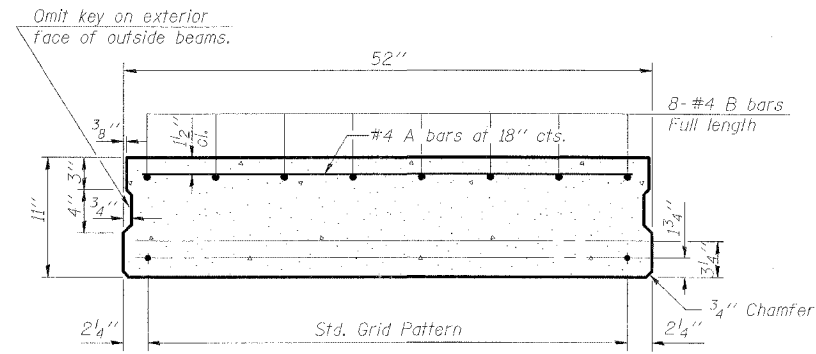


FABRIC BEARING PAD
(Interior)

FABRIC BEARING PAD
(Exterior and Stage Const. Line)

U BAR

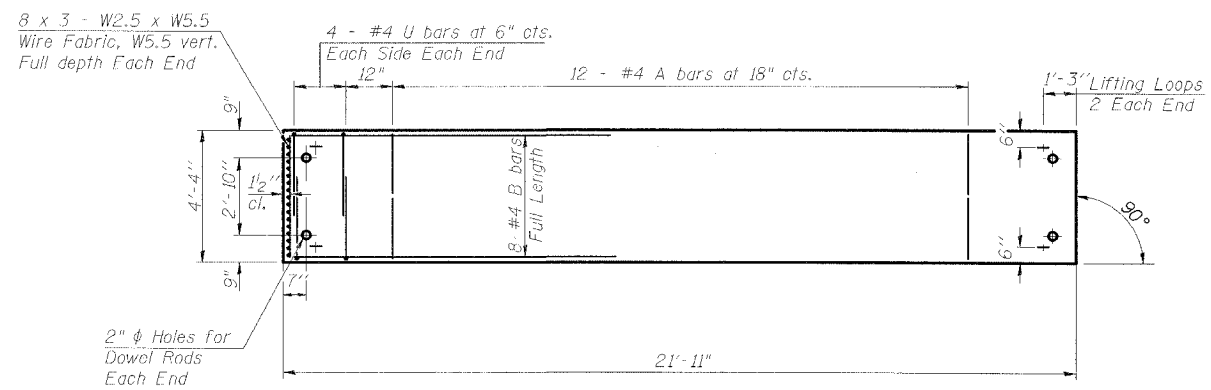
FIXED



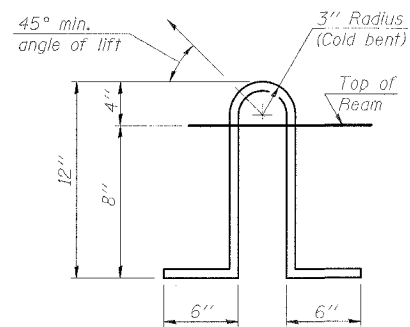
TYPICAL SECTION - INTERIOR BEAMS

12-1/2" ϕ Strands, Each Strand Stressed to 30,900 Lbs.
6-Strands 1 3/4" up, 6-Strands 3 1/4" up.

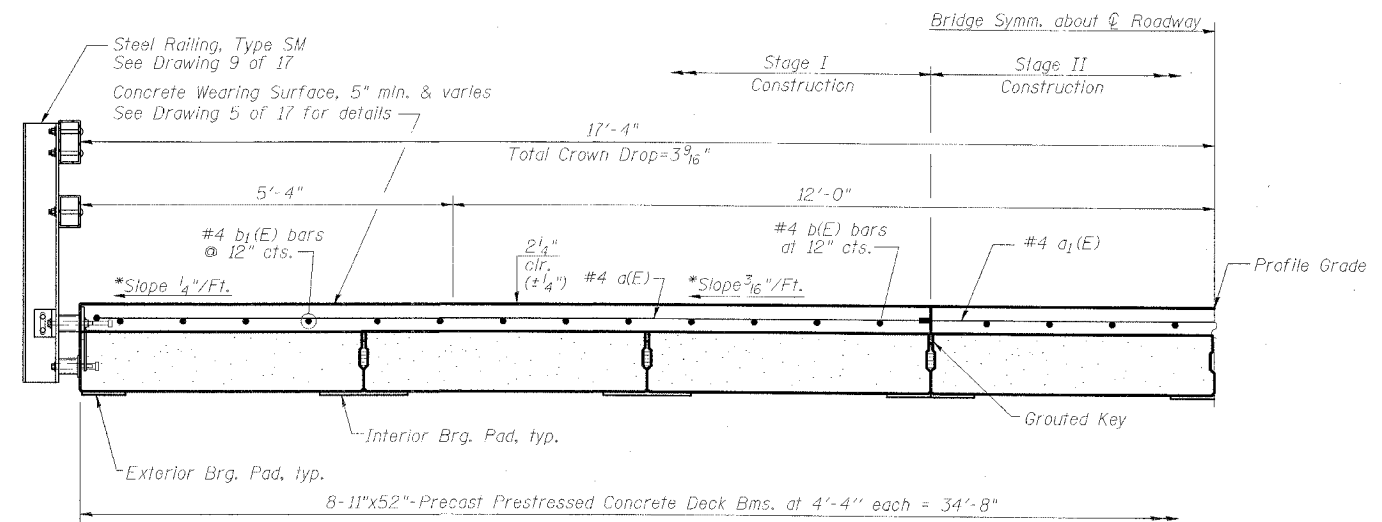
- Notes:
- Place strands symmetrically about ϕ beam.
 - See Dwg. 8 of 17 for add'l. details applicable to fascia beams.



PLAN



LIFTING LOOP DETAIL



HALF CROSS SECTION
(Looking North)

*Cross slopes shown are applicable to Concrete Wearing Surface.

NOTES

- Prestressing steel shall be uncoated high strength, low relaxation 7-wire strand, Grade 270. The nominal diameter shall be 1/2" and the nominal cross-sectional area shall be 0.153 sq. in. Lifting loops shall be 2 - 1/2" ϕ - 270 ksi strands, as shown. Non prestressing steel shall conform to AASHTO M-31, M-42 or M-53 Grade 60. The bearing seat surfaces shall be adjusted by shimming to assure firm and even bearing. Two 1/8" fabric adjusting shims of the dimensions of the Exterior Bearing Pad shall be provided for each bearing. Keyway surfaces shall be cleaned to remove form oil or other bond breaking material prior to shipment of the beams. Cleaning shall be done by sandblasting the keyway areas between top of the beam and the bottom edge of the key. Corrosion Inhibitor, as covered in the Special Provisions, shall be used in the concrete for precast prestressed concrete deck beams. Required Release Strength, f'cl, shall be 4,000 p.s.i. See Dwg. 2 of 17 for location of rail anchors and additional notes.

BILL OF MATERIAL

Precast Prestressed Conc. Deck Bms. (11')	Sq. Ft.	3039

SUPERSTRUCTURE DETAILS
US 45 OVER SKILLET FORK OVERFLOW
FAP ROUTE 328 - SECTION (105X)BR
WHITE COUNTY
STATION 598+76.00
STRUCTURE NO. 097-0019

ESCA
CONSULTANTS, INC.

DESIGNED BY:	RDP	01/07
DRAWN BY:	DWH	01/07
CHECKED BY:	JMS/MTD	01/07
APPROVED BY:	RDP	04/07