

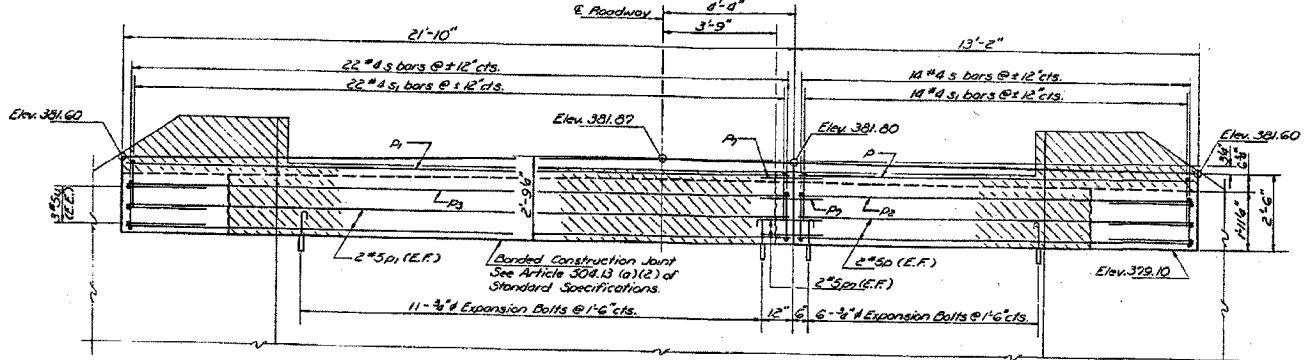


CONTRACT NO. 98997

FAP RTE	SECTION	COUNTY	TOTAL SHEETS	SHEET NO.
328	(105X)BR	WHITE	42	35
STA.		TO STA.		
FED. ROAD DIST. NO.		ILLINOIS FED. AID PROJECT		

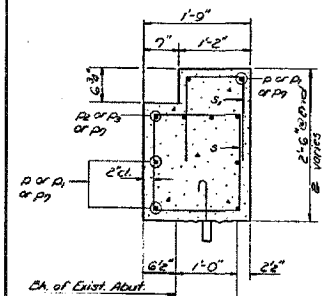
STATE OF ILLINOIS  
DEPARTMENT OF TRANSPORTATION

DATE	NO.	BY	REVISION
1/10/07	1/10/07	MMW	12
1/10/07	1/10/07	MMW	11
SHEET NO. 7			
8 SHEETS			



ELEVATION

Note: Hatched area indicates concrete removal. Reinforcement extending into removed area shall be cleaned and incorporated into new construction.



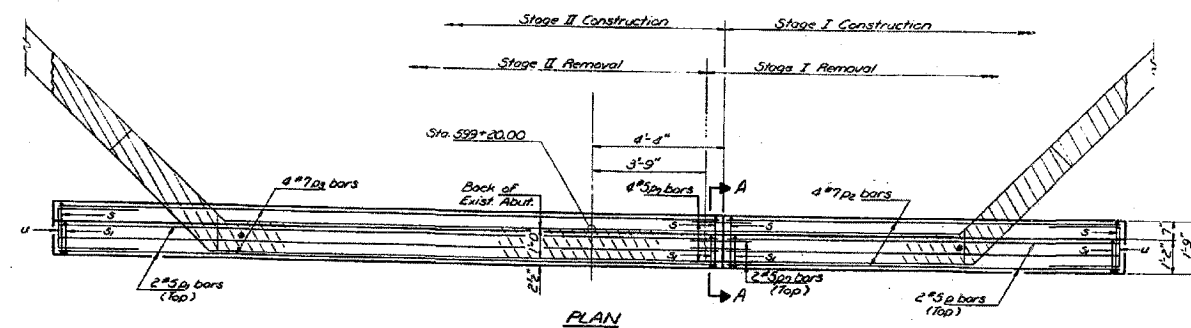
SEC. A-A

BILL OF MATERIAL

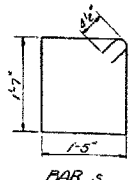
Bar	No.	Size	Length	Shape
B	6	#5	13'-0"	—
A	6	#5	21'-8"	—
DL	4	#7	13'-0"	—
DL	4	#7	21'-8"	—
P1	10	#5	4'-0"	L
S	36	#3	6'-0"	□
U	36	#3	3'-10"	□
U	6	#5	6'-0"	—

Class I Concrete Cu. Yd. 5.5  
Reinforcement Bars Pound 680  
Expansion Bolts # Each 17  
Concrete Removal Cu. Yd. 3.0

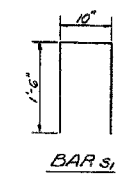
\*For detail of P1 bars see Sheet #6



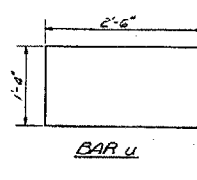
PLAN



BAR S



BAR S1



BAR U

DESIGNED	John A. Morris	EXAMINED	Scott W. ...
CHECKED	Joe Sutherland	PASSED	Mark ...
DRAWN	Joe Sutherland	APPROVED	Mark ...
CHECKED	Joe Sutherland	DATE	1/10/07

SOUTH ABUTMENT  
S.B.T. RT. 140 SEC. 105 BR-2  
WHITE COUNTY  
STATION 599+76.00

**ESCA**  
CONSULTANTS, INC.

DESIGNED BY:	MTD	02/07
DRAWN BY:	HAG	02/07
CHECKED BY:	MTD	02/07
APPROVED BY:	RDP	04/07

FOR INFORMATION ONLY

EXISTING STRUCTURE PLANS  
FAP RTE 328 (US 45)  
SECTION (105X)BR  
WHITE COUNTY