

JUN 08, 2007 9:58 AM CAH
 C:\AIRPORTS\LITCHFIELD\B14-07APNA\REPORT\SHEETS\R-123CON.DWG - STA. 8+00 TO STA. 13+25

8+00

9+00

10+00


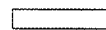


11+00

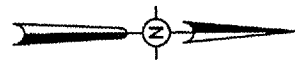
12+00

13+00

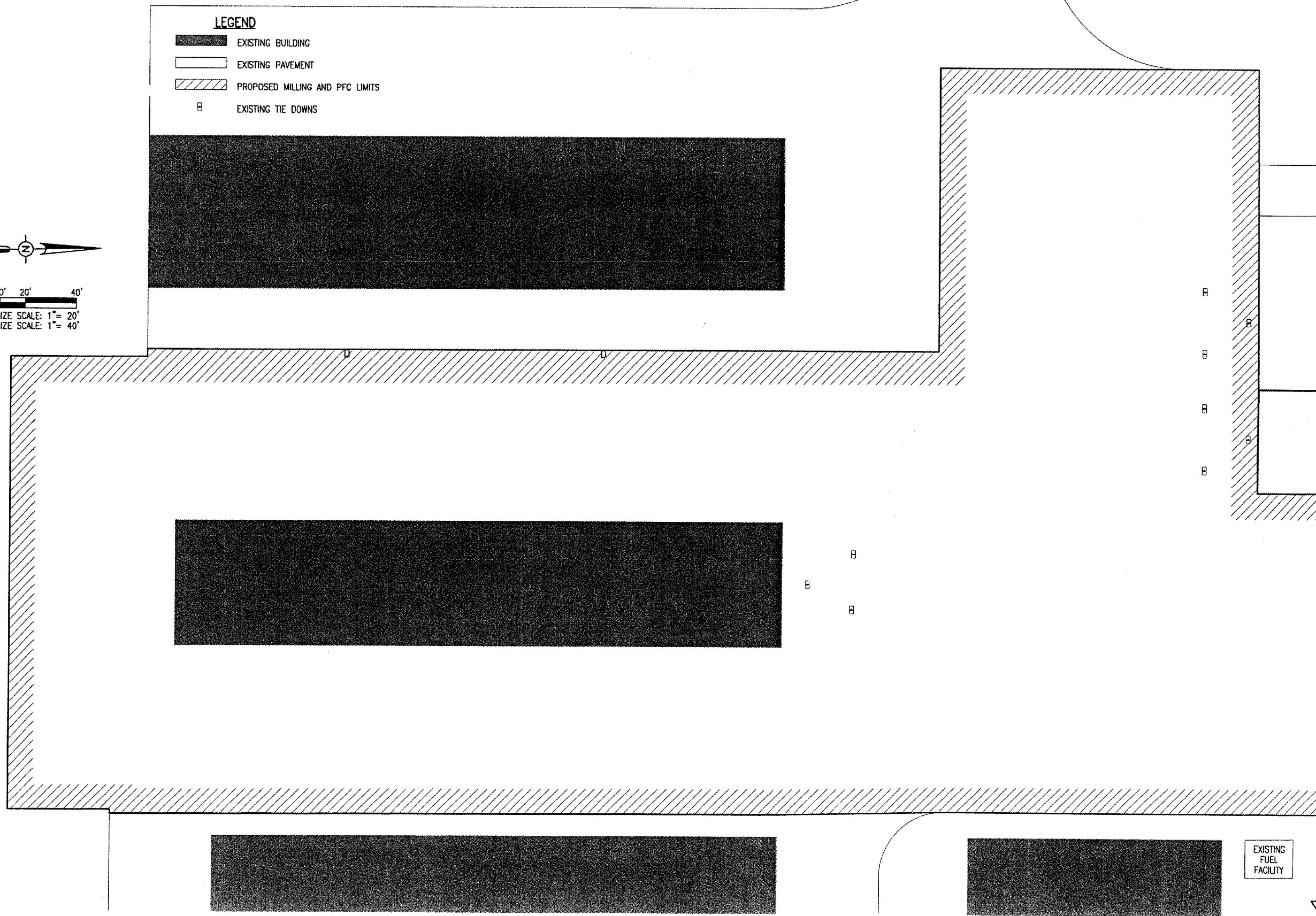
LI030

LEGEND

-  EXISTING BUILDING
-  EXISTING PAVEMENT
-  PROPOSED MILLING AND PFC LIMITS
-  EXISTING TIE DOWNS



0' 10' 20' 40'
 FULL SIZE SCALE: 1" = 20'
 HALF SIZE SCALE: 1" = 40'



MATCHLINE STA. 13+25

EXISTING
FUEL
FACILITY

DATE	REVISION	BY

LITCHFIELD MUNICIPAL AIRPORT
 LITCHFIELD, ILLINOIS
 I.L. PROJ.: 3LF-3645 A.I.P. PROJ.: 3-17-0083-B14

FILE Project No. B14-07APND			
Filename R-123CON.DWG			
Scale 1" = 20'			
Date 01/31/07			
LAYOUT ZSH	01/31/07		
DRAWN ZSH	01/31/07		
REVIEWED CAH	05/09/07		

HANSON
 Hanson Professional Services Inc.
 1525 South Sixth Street
 Springfield, Illinois 62703-2886
 Offices Nationwide

PFC OVERLAY
 AIRCRAFT APRON
 PROPOSED
 TIE DOWN LAYOUT PLAN
 STA. 8+00 TO STA. 13+25