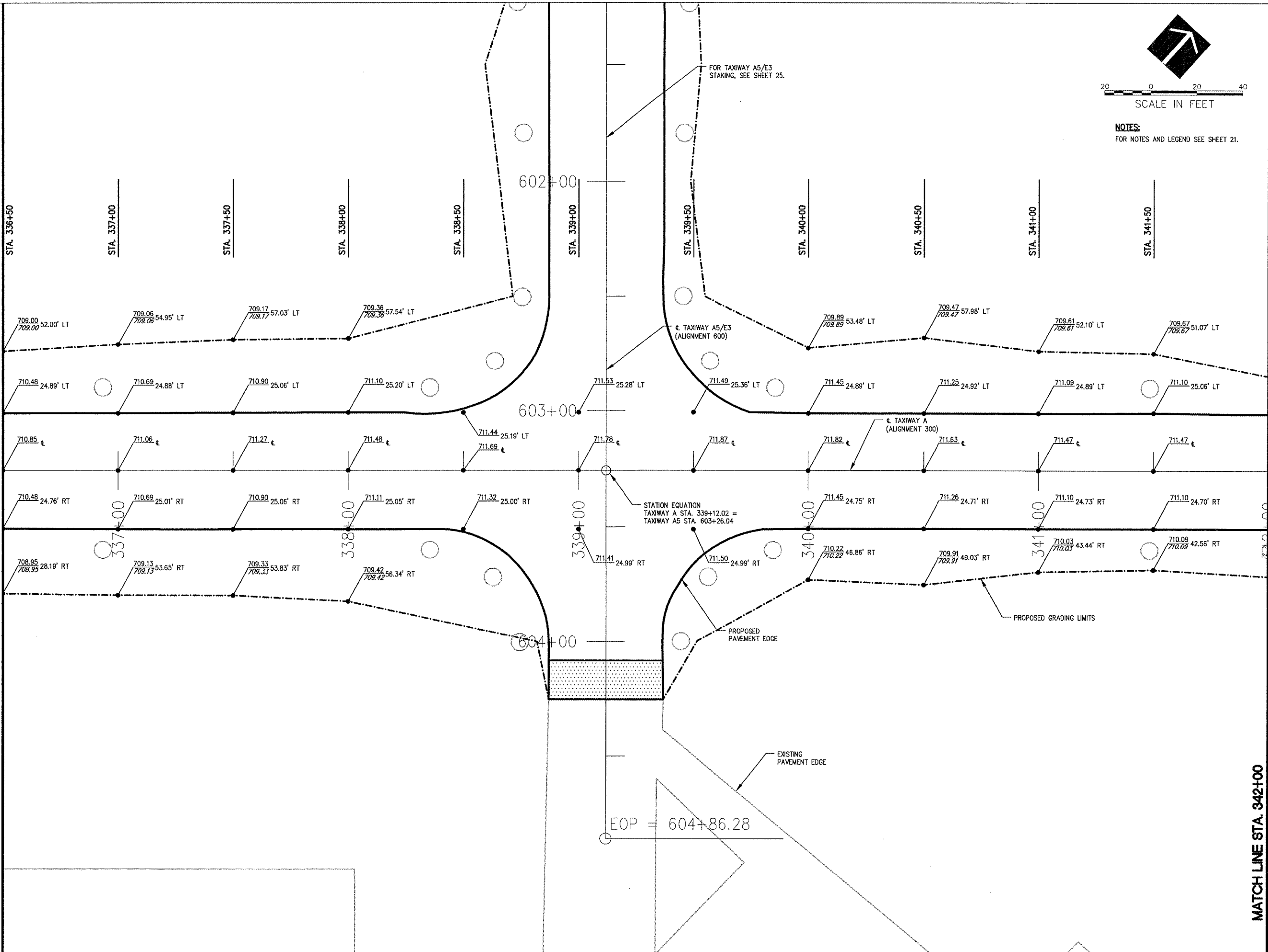


\\06c065\c0631\068802\DRAWINGS\SHEETS\2-STARING 300-2.DWG JUN 08 2007 12:29PM LDH

MATCH LINE STA. 336+50



WA058



HANSON PROFESSIONAL SERVICES INC.

815 Commerce Drive, Suite 200  
Oak Brook, Illinois 60523  
Telephone: 630.990.3800  
Fax: 630.990.3801

Illinois Professional Design Firm  
Registration No. 184-001084

© Copyright Hanson Professional Service Inc. 2007



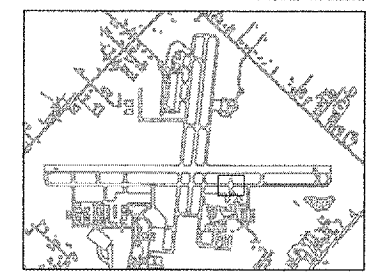
WAUKEGAN REGIONAL AIRPORT  
WAUKEGAN PORT DISTRICT

3580 North McAree Road  
Waukegan, Illinois 60087  
Telephone: 847.244.0066  
Fax: 847.244.3813

WAUKEGAN REGIONAL AIRPORT

REPAIR AND OVERLAY EAST  
PORTION OF TAXIWAY A

WAUKEGAN, ILLINOIS



No.	Drawing Issue Description	Date	By

Date

JUNE 8, 2007

Sheet Title

STAKING PLAN  
TAXIWAY A  
STA. 336+50 THRU  
STA. 342+00

8310618012  
Project Number  
LDH 04/02/07  
Layout By Date  
LDH 04/02/07  
Designed By Date  
RMH 06/08/07  
Reviewed By Date  
LDH --- ---  
Drawn By Sheet No.