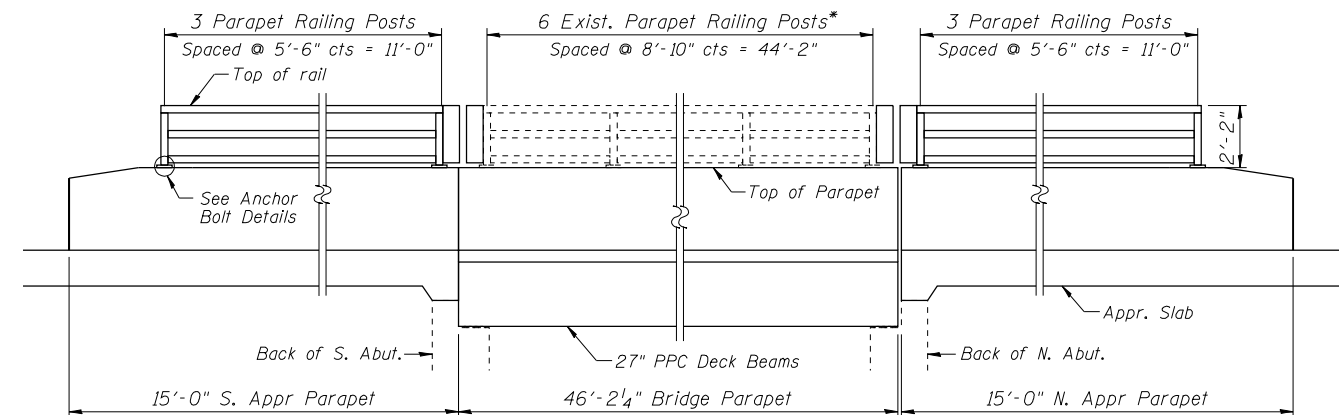
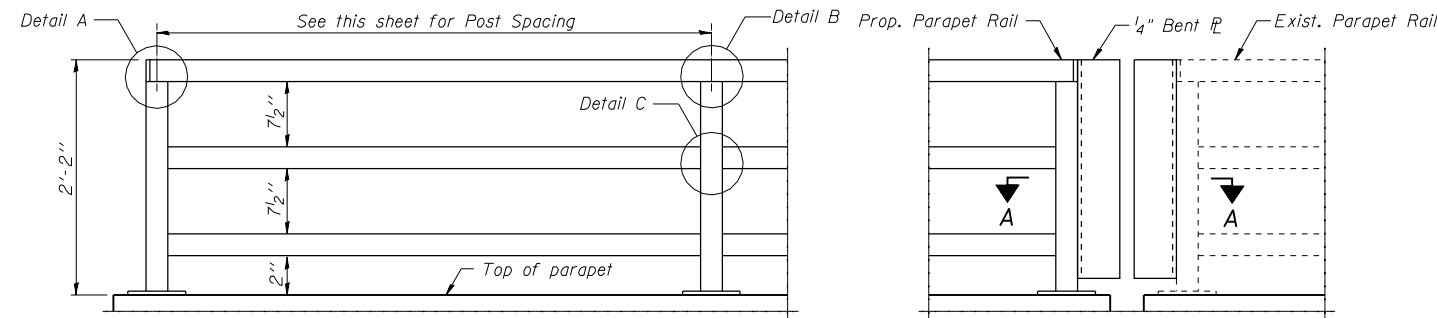
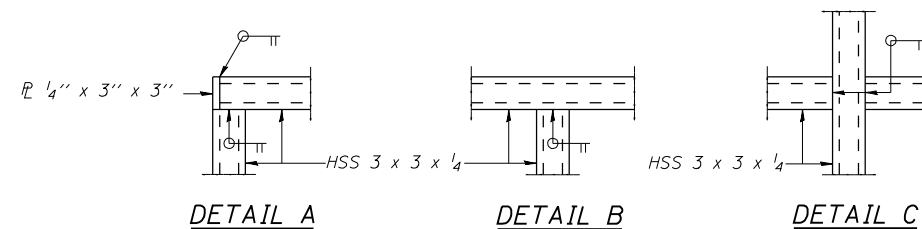
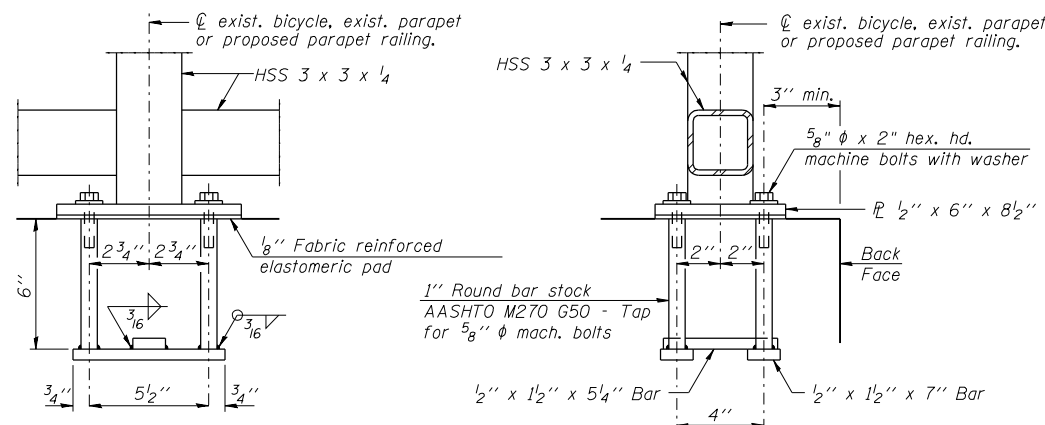


**NOTES**

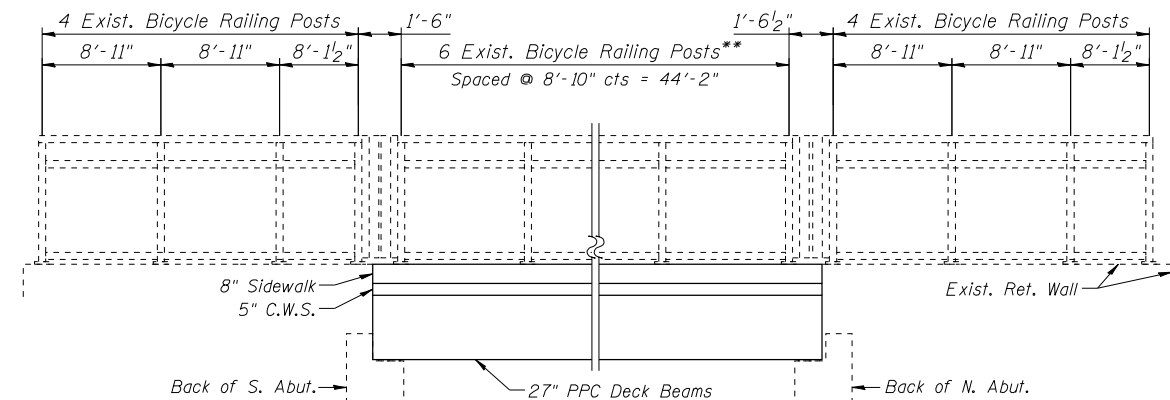
All steel rail elements shall be galvanized according to Article 509.05 of the Standard Specifications.  
 See sheet S7 of S14 for section thru sidewalk.  
 All new hardware and 1/8" fabric reinforced elastomeric pad shall be included for each post that is being removed and re-erected. See Base P and Anchor Bolt for details. Cost shall be included in Removing and Re-Erecting Existing Railing.



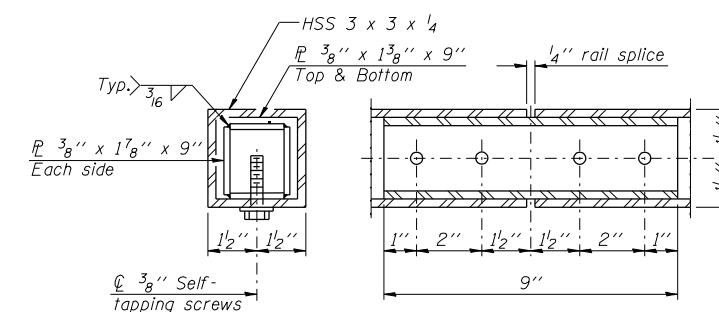
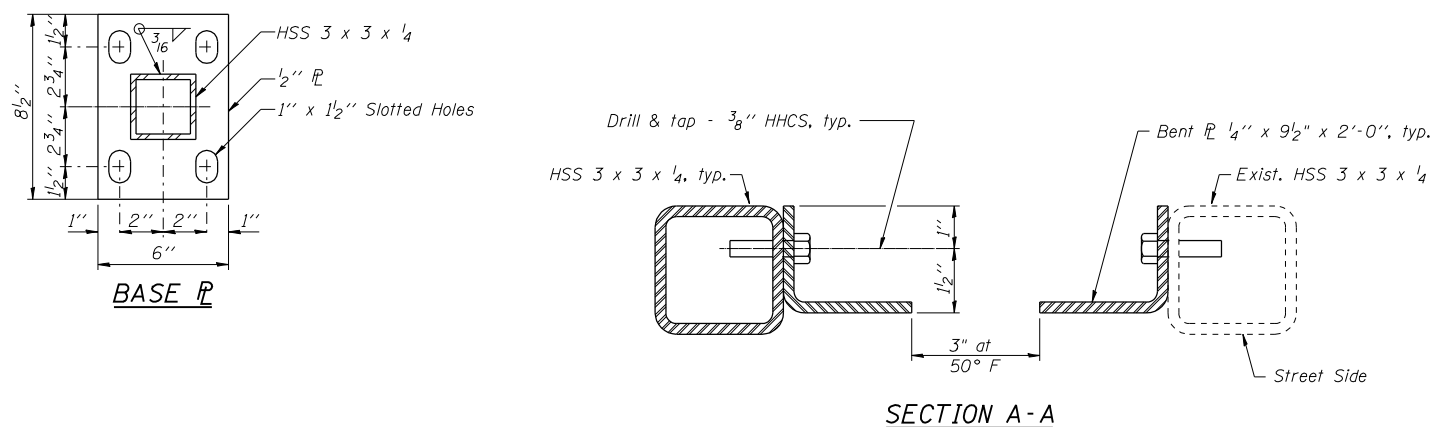
\*Exist. Parapet Railing to be removed, and re-erected. Cost shall be included in Removing and Re-Erecting Existing Railing.



In lieu of the cast-in-place anchor device shown, the Contractor has the option of drilling and setting 5/8"  $\phi$  anchor rods according to Article 509.06 of the Standard Specifications. Embedment shall be according to the manufacturer's specifications.



\*\*Exist. Bicycle Railing to be removed, and re-erected. Cost shall be included in Removing and Re-Erecting Existing Railing. The exist. railing on the exist. ret. wall shall stay in place during construction.



**BILL OF MATERIAL**

Item	Unit	Quantity
Parapet Railing	Foot	22
Remove and Re-Erect Existing Bridge Rail	Foot	89