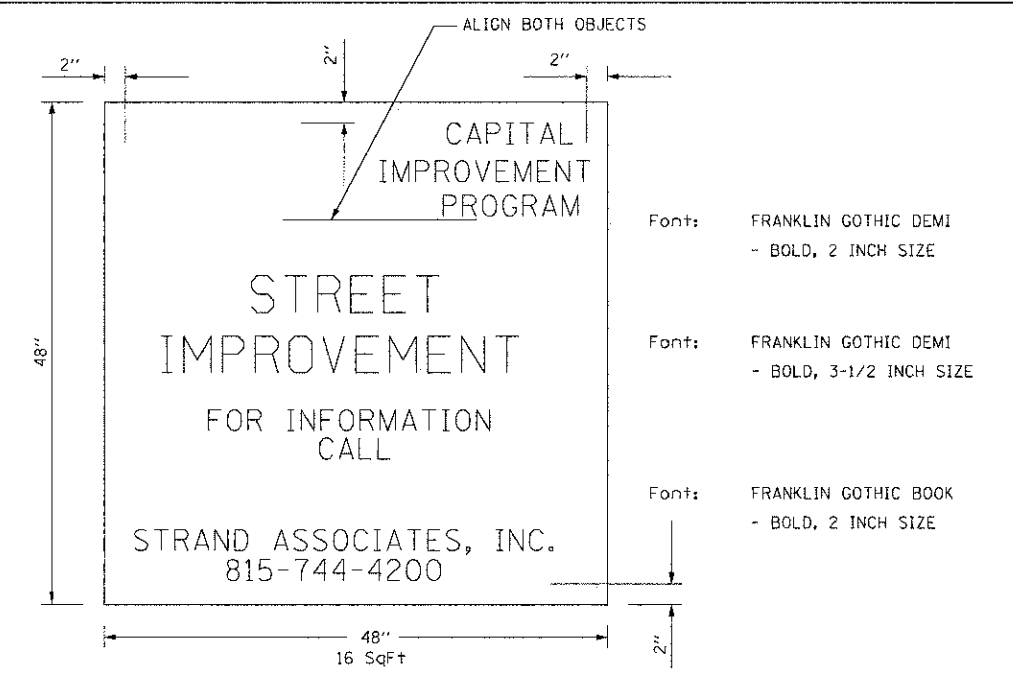
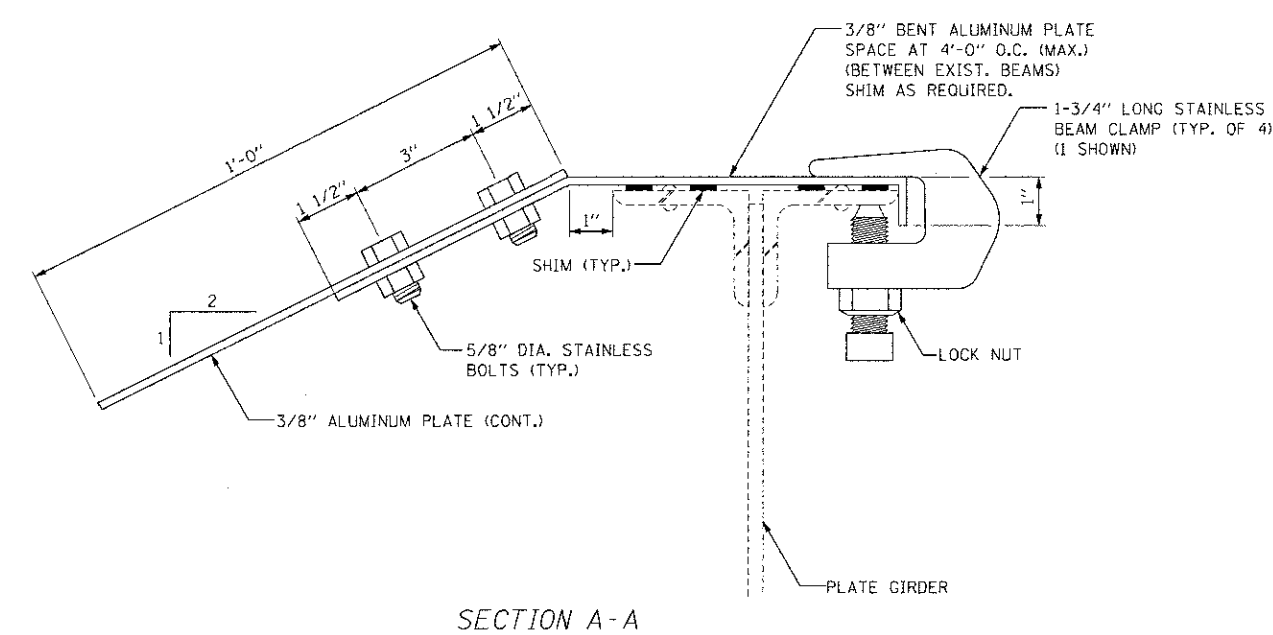


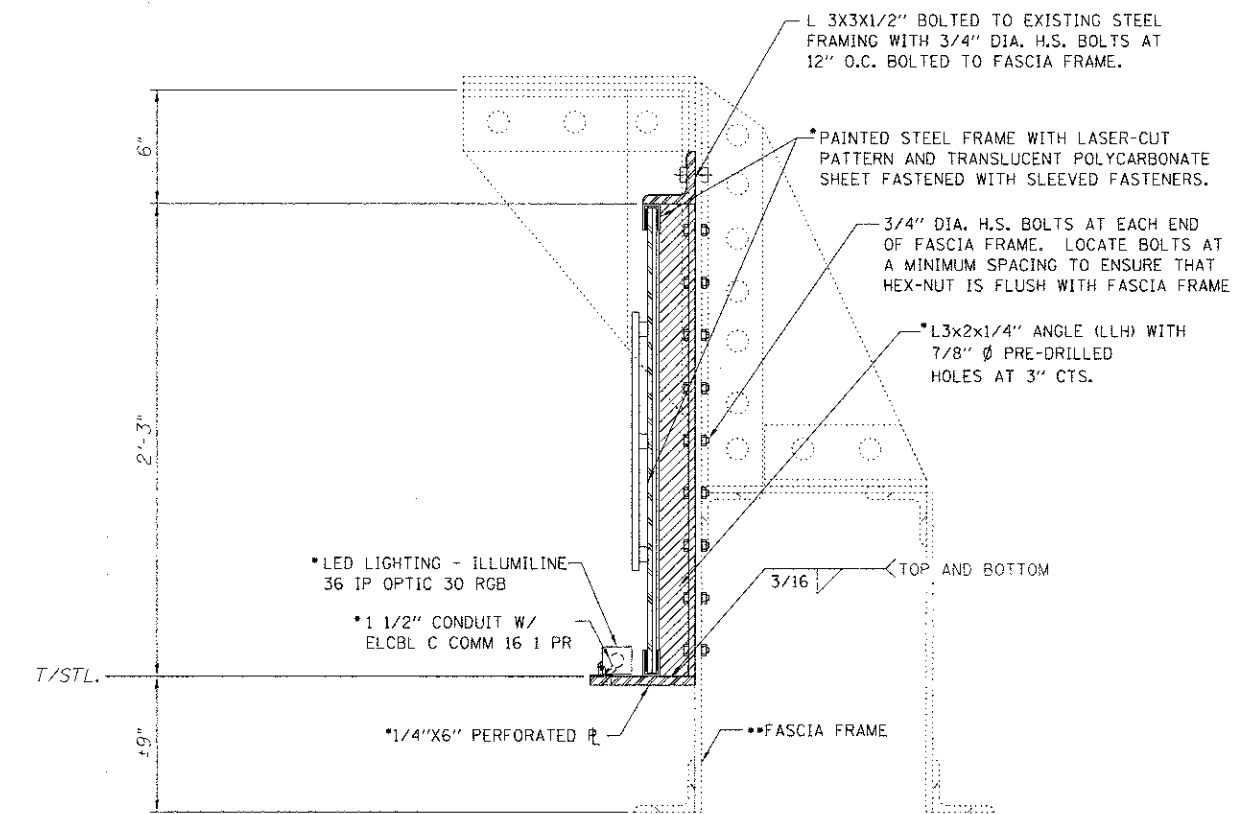
Background: WHITE
 All Lettering: GREY (PMS 346c) - Screened
 or 3m CONTROLTAK PLUS #180-41 - Vinyl
 Logo Symbol: GREEN (PMS 3525c) - Screened
 or 3m CONTROLTAK PLUS #180-56 - Vinyl



PROJECT SIGN DETAIL



PROTECTIVE SHIELD, SPECIAL DETAIL
 APPLIES TO RIDGELAND AVENUE ONLY

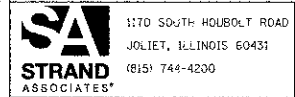


* DENOTES ALL WORK SHALL BE INCLUDED IN THE UNIT PRICE FOR GATEWAY MONUMENT SIGN COMPLETE AND WILL NOT BE MEASURED SEPARATELY FOR PAYMENT.

** EXISTING FASCIA FRAME WAS OBSERVED TO BE DAMAGED. CONTRACTOR MAY LOCATE BOLTS ALONG LENGTH OF THE ANGLE TO ENSURE THAT HEX-NUTS ARE FLUSH WITH THE FASCIA FRAME. MINIMUM SPACING OF BOLTS IS 3".

GATEWAY MONUMENT SIGN COMPLETE DETAIL
 APPLIES TO RIDGELAND AVENUE ONLY

FILE NAME = S:\JULIA\6790-6799\6785\BID\Microe\CADD_Sheet\0163722-shield-gateway.dwg



USER NAME = amanda.j	DESIGNED - JDM	REVISED -
PLOT SCALE = 0.2058" = 1'-0"	DRAWN - JKP	REVISED -
PLOT DATE = 5/30/2012	CHECKED - MTC	REVISED -
	DATE - 05-07-2012	REVISED -

STATE OF ILLINOIS
 DEPARTMENT OF TRANSPORTATION

RIDGELAND AVENUE GATEWAY DETAILS

SCALE: AS SHOWN	SHEET NO. OF SHEETS	STA. TO STA.
-----------------	---------------------	--------------

F.A.U. RTE. 2783	SECTION 1J-00253-00-LS	COUNTY COOK	TOTAL SHEETS 24	SHEET NO. 14
CONTRACT NO. 63722				
ILLINOIS FED. AID PROJECT				