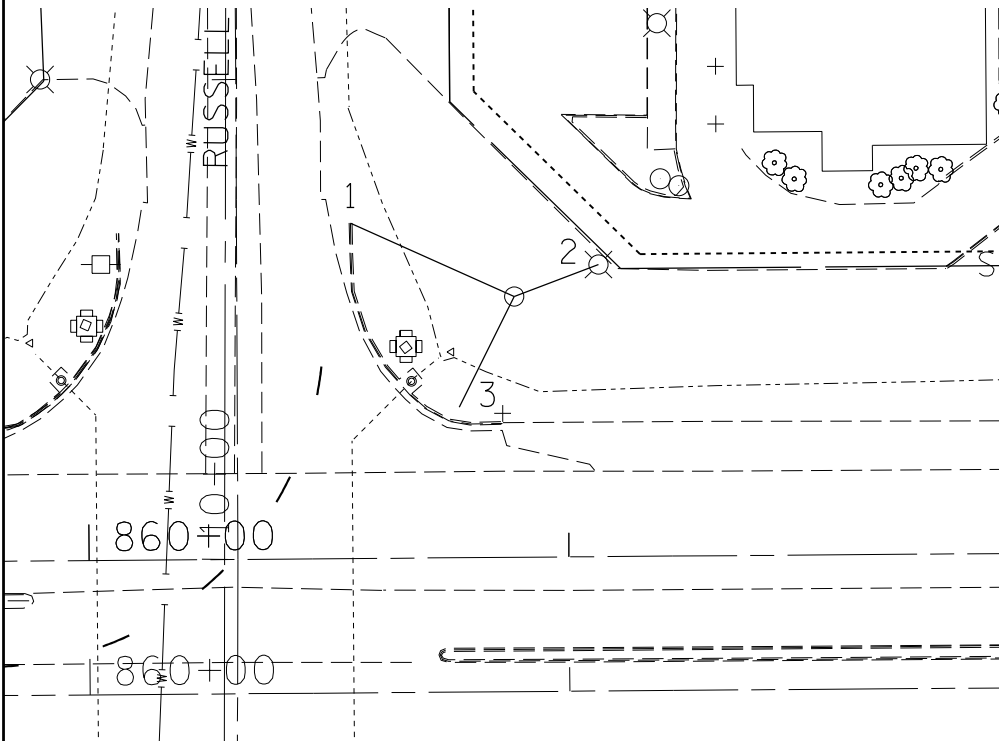
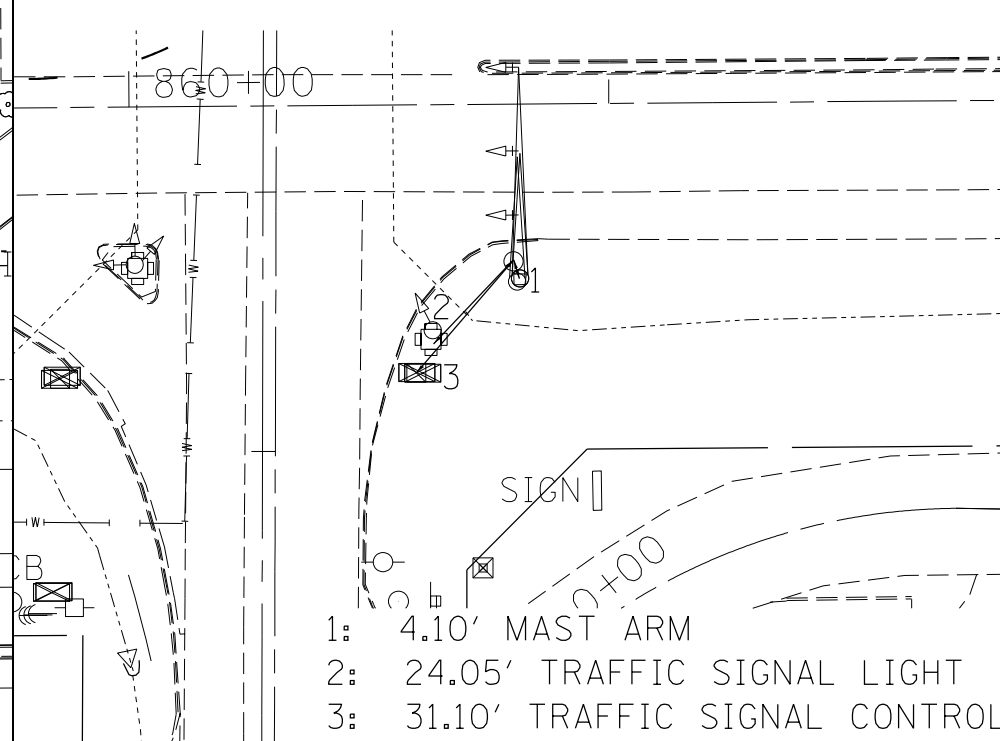


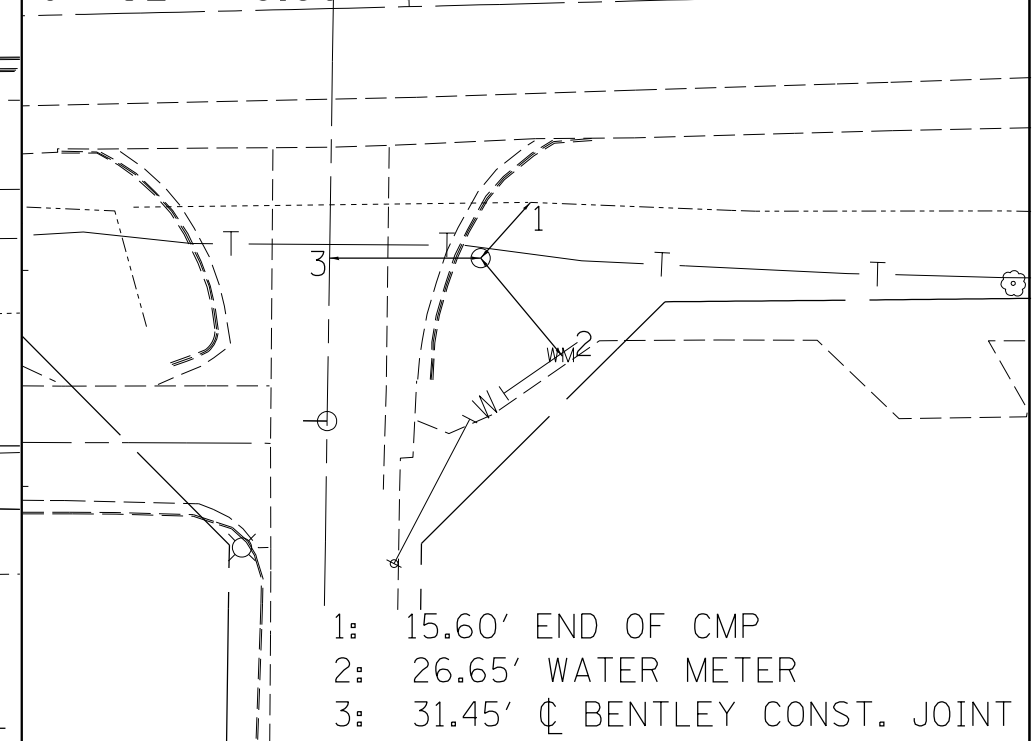
POINT C2910 1: 37.35' CUT X AT END OF C&G
 N 391712.928 2: 18.7' CUT X IN FOUNDATION
 E 808335.890 3: 24.75' CUT X ON HANDHOLE
 ELEV. 455.522
 STA. 860+89.03 WB IL 13
 OFFSET 54.35' LT



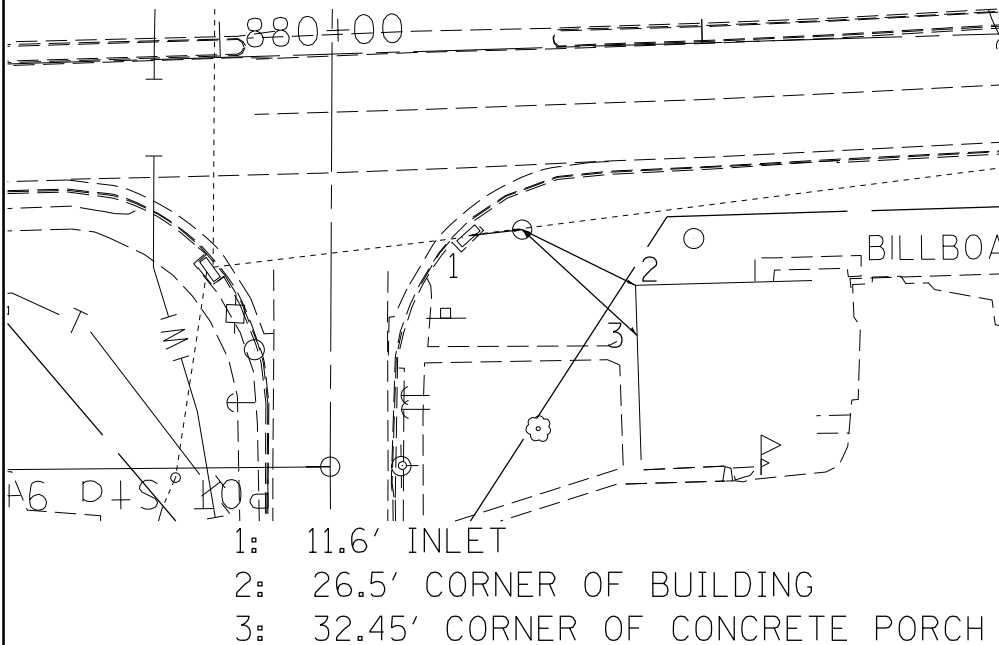
POINT T0318
 N 391598.491
 E 808328.648
 ELEV. 453.267
 STA. 860+80.88 EB IL 13
 OFFSET 32.02' RT



POINT T0309
 N 391592.437
 E 809462.515
 ELEV. 449.843
 STA. 872+13.34 WB IL 13
 OFFSET 79.90' RT

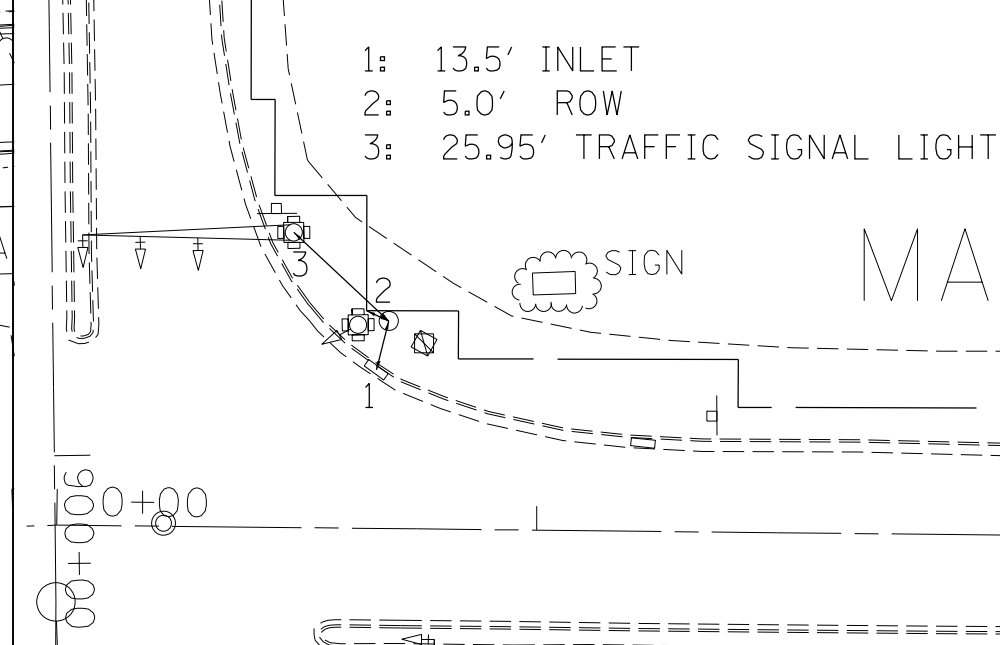


POINT T0322
 N 391631.770
 E 810309.964
 ELEV. 446.999
 STA. 880+61.32 EB IL 13
 OFFSET 37.80' RT



1: 11.6' INLET
 2: 26.5' CORNER OF BUILDING
 3: 32.45' CORNER OF CONCRETE PORCH

POINT T0319
 N 391750.106
 E 811037.132
 ELEV. 450.350
 STA. 0+80.57 IL 13
 OFFSET 47.76' LT



1: 13.5' INLET
 2: 5.0' ROW
 3: 25.95' TRAFFIC SIGNAL LIGHT

FILE NAME =	USER NAME = \$USER\$	DESIGNED -	REVISED -
et:\pw\work\p\dot\k\ell\yk\d\0184451\78203-sht-note.dgn		DRAWN -	REVISED -
	PLOT SCALE = 48.0000' / in.	CHECKED -	REVISED -
	PLOT DATE = 5/11/2012	DATE -	REVISED -

STATE OF ILLINOIS
 DEPARTMENT OF TRANSPORTATION

TIE POINTS

SCALE: SHEET OF SHEETS STA. TO STA.

F.A.P. RTE.	SECTION	COUNTY	TOTAL SHEETS	SHEET NO.
331	(IX-1)R-5,RS-3,N-5,TS-4	WILLIAMSON	288	56
			CONTRACT NO. 78203	
ILLINOIS FED. AID PROJECT				