

STAGE 1

FAP 331 (ILLINOIS 13)

NOTES:

CLOSE OUTSIDE EB & WB THROUGH LANE ACCORDING TO STD 701601. REFER TO DROP OFF PROTECTION CHART. OPEN TO TWO THROUGH LANES AS QUICKLY AS POSSIBLE.

IN ADDITION TO THE REQUIREMENTS OF THE DROP-OFF POLICY: NO DROP OFFS GREATER THAN 3', LESS THAN 3' FROM AN OPEN LANE, WILL BE ALLOWED FOR GREATER THAN 72 HOURS. VIOLATION OF THIS REQUIREMENT WILL RESULT IN A TRAFFIC CONTROL DEFICIENCY DEDUCTION.

RUSSEL ST. TRAFFIC CONTROL ACCORDING STD 701601

REMOVE EXISTING PAVEMENT, SHOULDER, SIDEWALK, AND CURB & GUTTER. PLACE BINDER COURSE, HMA SHOULDERS, SIDEWALK, COMBINATION CURB & GUTTER, AND SIDE ROAD WORK.

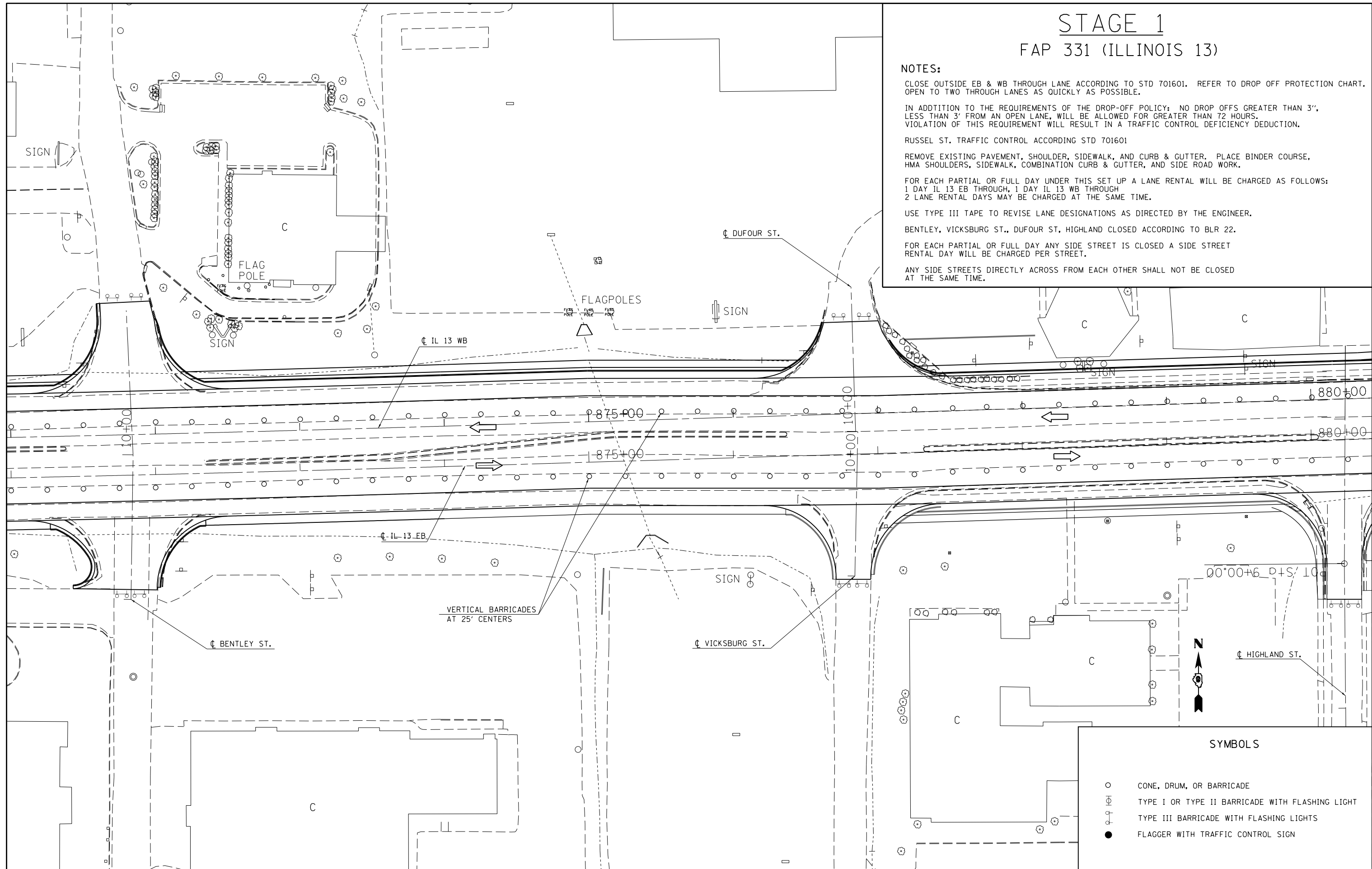
FOR EACH PARTIAL OR FULL DAY UNDER THIS SET UP A LANE RENTAL WILL BE CHARGED AS FOLLOWS:
 1 DAY IL 13 EB THROUGH, 1 DAY IL 13 WB THROUGH
 2 LANE RENTAL DAYS MAY BE CHARGED AT THE SAME TIME.

USE TYPE III TAPE TO REVISE LANE DESIGNATIONS AS DIRECTED BY THE ENGINEER.

BENTLEY, VICKSBURG ST., DUFOUR ST, HIGHLAND CLOSED ACCORDING TO BLR 22.

FOR EACH PARTIAL OR FULL DAY ANY SIDE STREET IS CLOSED A SIDE STREET RENTAL DAY WILL BE CHARGED PER STREET.

ANY SIDE STREETS DIRECTLY ACROSS FROM EACH OTHER SHALL NOT BE CLOSED AT THE SAME TIME.



SYMBOLS

- CONE, DRUM, OR BARRICADE
- ⊕ TYPE I OR TYPE II BARRICADE WITH FLASHING LIGHT
- ⊕ TYPE III BARRICADE WITH FLASHING LIGHTS
- FLAGGER WITH TRAFFIC CONTROL SIGN

FILE NAME =	USER NAME = \$USER\$	DESIGNED -	REVISED -
et:\pw\work\p\dot\kellayka\d0184451\78203-sht-stg.dgn		DRAWN -	REVISED -
	PLOT SCALE = 60.0000' / in.	CHECKED -	REVISED -
	PLOT DATE = 5/11/2012	DATE -	REVISED -

**STATE OF ILLINOIS
DEPARTMENT OF TRANSPORTATION**

IL 13 STAGE 1

SCALE: 30 SHEET NO. 3 OF 4 SHEETS STA. TO STA.

F.A.P. RTE.	SECTION	COUNTY	TOTAL SHEETS	SHEET NO.
331	(1X-1R-5,RS-3,N-5,TS-4	WILLIAMSON	288	68
CONTRACT NO. 78203			ILLINOIS FED. AID PROJECT	