

IL 13: WEST OF RUSSELL ST.

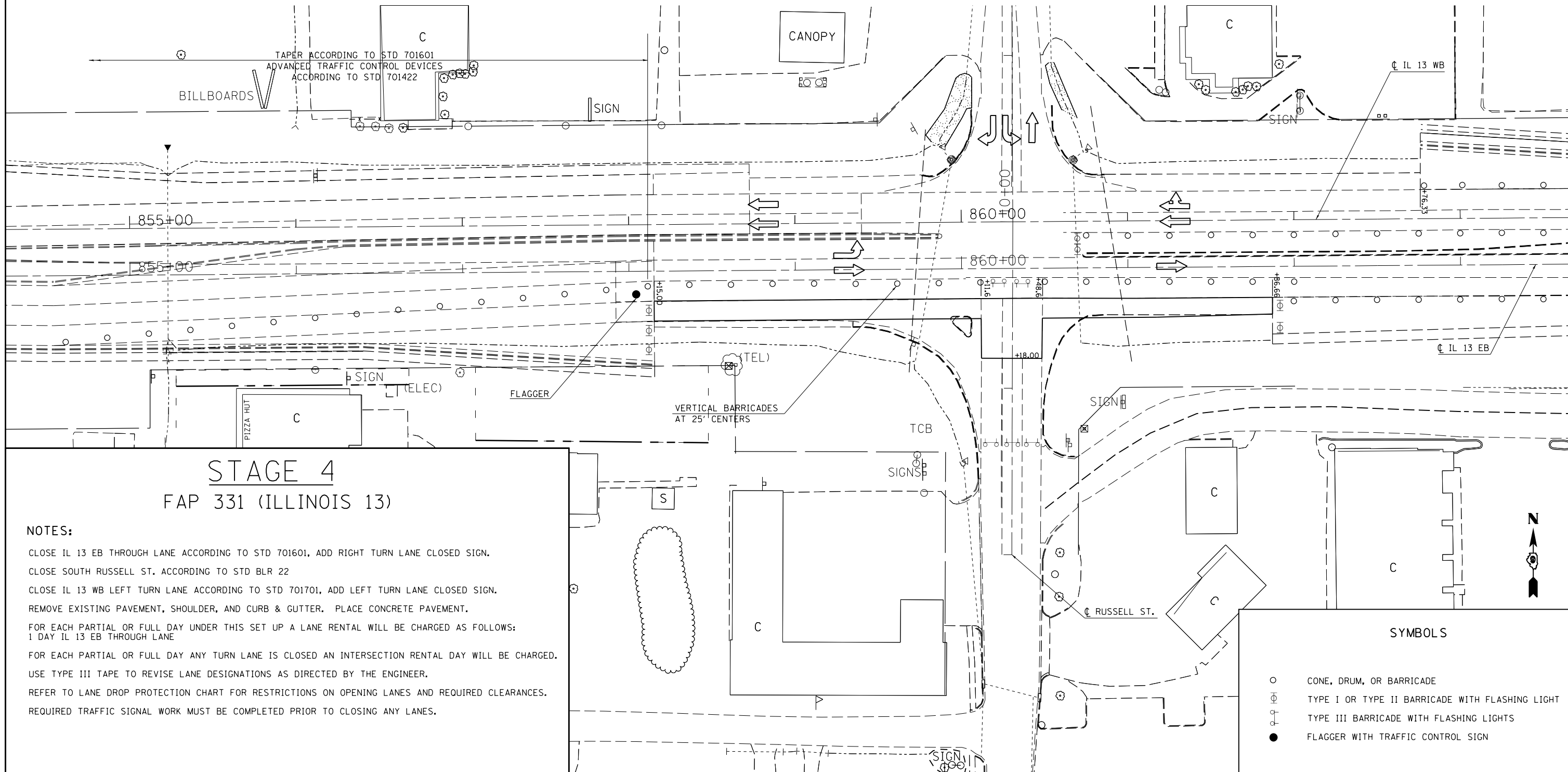
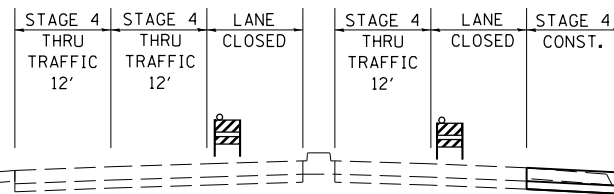
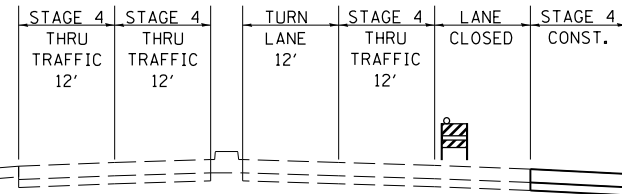
IL 13: EAST OF RUSSELL ST.

WESTBOUND

EASTBOUND

WESTBOUND

EASTBOUND



STAGE 4 FAP 331 (ILLINOIS 13)

NOTES:

- CLOSE IL 13 EB THROUGH LANE ACCORDING TO STD 701601, ADD RIGHT TURN LANE CLOSED SIGN.
- CLOSE SOUTH RUSSELL ST. ACCORDING TO STD BLR 22
- CLOSE IL 13 WB LEFT TURN LANE ACCORDING TO STD 701701, ADD LEFT TURN LANE CLOSED SIGN.
- REMOVE EXISTING PAVEMENT, SHOULDER, AND CURB & GUTTER. PLACE CONCRETE PAVEMENT.
- FOR EACH PARTIAL OR FULL DAY UNDER THIS SET UP A LANE RENTAL WILL BE CHARGED AS FOLLOWS:
1 DAY IL 13 EB THROUGH LANE
- FOR EACH PARTIAL OR FULL DAY ANY TURN LANE IS CLOSED AN INTERSECTION RENTAL DAY WILL BE CHARGED.
- USE TYPE III TAPE TO REVISE LANE DESIGNATIONS AS DIRECTED BY THE ENGINEER.
- REFER TO LANE DROP PROTECTION CHART FOR RESTRICTIONS ON OPENING LANES AND REQUIRED CLEARANCES.
- REQUIRED TRAFFIC SIGNAL WORK MUST BE COMPLETED PRIOR TO CLOSING ANY LANES.

SYMBOLS

- CONE, DRUM, OR BARRICADE
- ⊕ TYPE I OR TYPE II BARRICADE WITH FLASHING LIGHT
- ⊕ TYPE III BARRICADE WITH FLASHING LIGHTS
- FLAGGER WITH TRAFFIC CONTROL SIGN

FILE NAME =	USER NAME = \$USER\$	DESIGNED -	REVISED -
et:\pw\work\p\dot\k\ell\aykd\0184451\78203-sht-stg.dgn		DRAWN -	REVISED -
		CHECKED -	REVISED -
		DATE -	REVISED -

**STATE OF ILLINOIS
DEPARTMENT OF TRANSPORTATION**

IL 13 STAGE 4

SCALE: 30 SHEET NO. 1 OF 1 SHEETS STA. TO STA.

F.A.P. RTE.	SECTION	COUNTY	TOTAL SHEETS	SHEET NO.
331	(1X-1)R-5,RS-3,N-5,TS-4	WILLIAMSON	288	72
CONTRACT NO. 78203				
ILLINOIS FED. AID PROJECT				