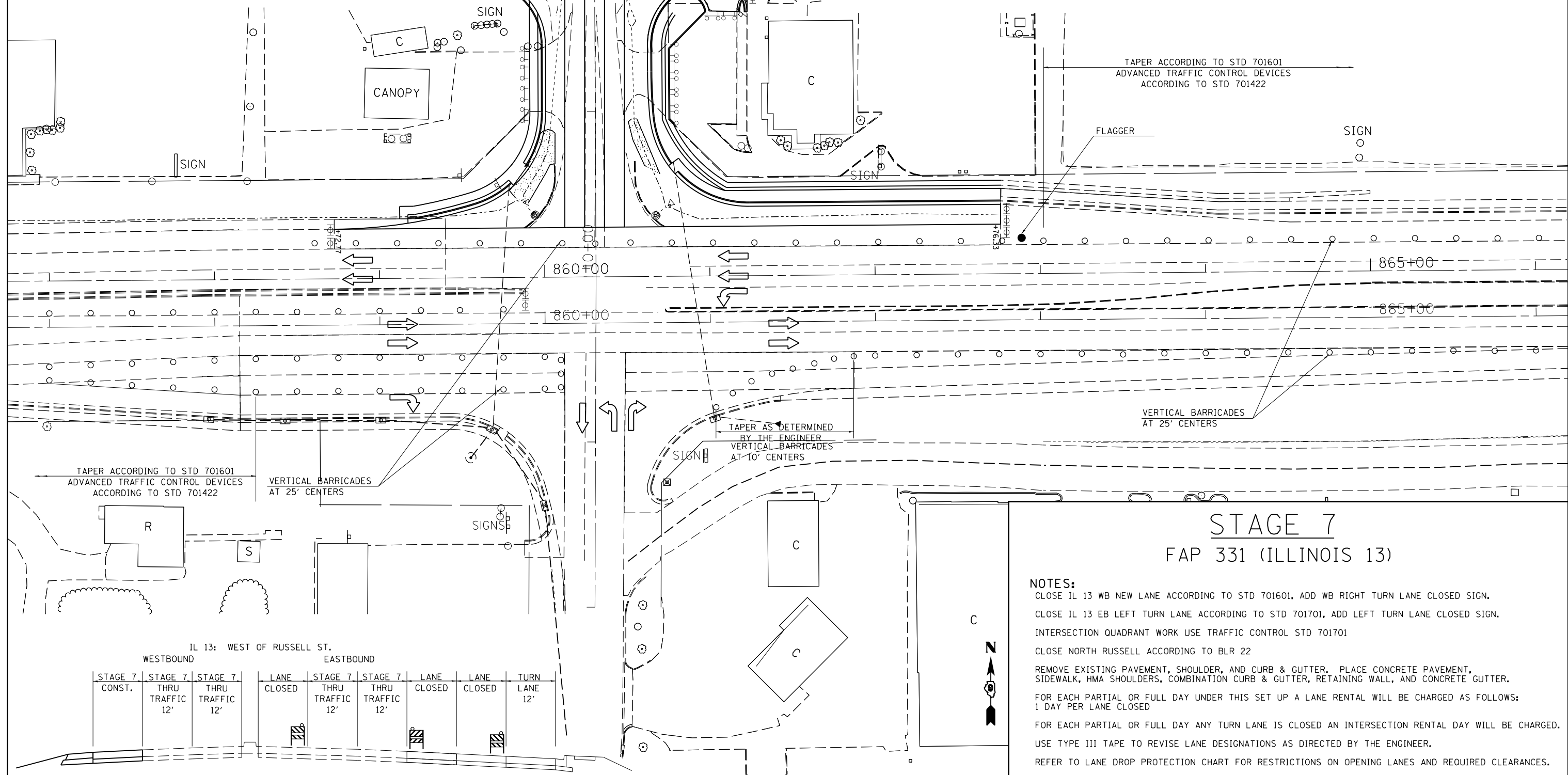
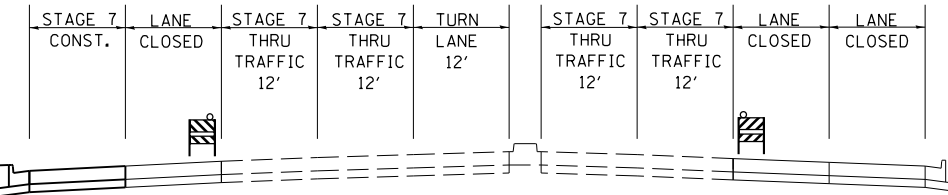


SYMBOLS

- CONE, DRUM, OR BARRICADE
- ⊕ TYPE I OR TYPE II BARRICADE WITH FLASHING LIGHT
- ⊕ TYPE III BARRICADE WITH FLASHING LIGHTS
- FLAGGER WITH TRAFFIC CONTROL SIGN

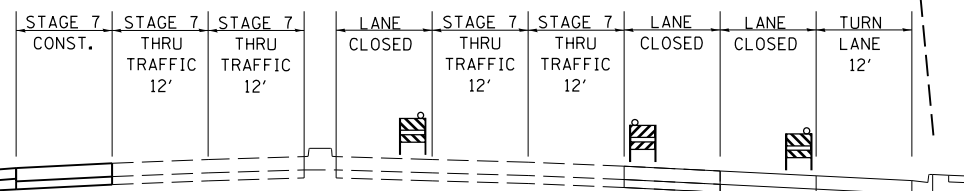
IL 13: EAST OF RUSSELL ST.
WESTBOUND EASTBOUND



STAGE 7
FAP 331 (ILLINOIS 13)

- NOTES:**
- CLOSE IL 13 WB NEW LANE ACCORDING TO STD 701601, ADD WB RIGHT TURN LANE CLOSED SIGN.
 - CLOSE IL 13 EB LEFT TURN LANE ACCORDING TO STD 701701, ADD LEFT TURN LANE CLOSED SIGN.
 - INTERSECTION QUADRANT WORK USE TRAFFIC CONTROL STD 701701
 - CLOSE NORTH RUSSELL ACCORDING TO BLR 22
 - REMOVE EXISTING PAVEMENT, SHOULDER, AND CURB & GUTTER. PLACE CONCRETE PAVEMENT, SIDEWALK, HMA SHOULDERS, COMBINATION CURB & GUTTER, RETAINING WALL, AND CONCRETE GUTTER.
 - FOR EACH PARTIAL OR FULL DAY UNDER THIS SET UP A LANE RENTAL WILL BE CHARGED AS FOLLOWS:
1 DAY PER LANE CLOSED
 - FOR EACH PARTIAL OR FULL DAY ANY TURN LANE IS CLOSED AN INTERSECTION RENTAL DAY WILL BE CHARGED.
 - USE TYPE III TAPE TO REVISE LANE DESIGNATIONS AS DIRECTED BY THE ENGINEER.
 - REFER TO LANE DROP PROTECTION CHART FOR RESTRICTIONS ON OPENING LANES AND REQUIRED CLEARANCES.

IL 13: WEST OF RUSSELL ST.
WESTBOUND EASTBOUND



FILE NAME =	USER NAME = \$USER\$	DESIGNED -	REVISED -
et:\pw\work\p\midot\kellaykd\0184451\78203-sht-stg.dgn		DRAWN -	REVISED -
	PLOT SCALE = 60.0000' / in.	CHECKED -	REVISED -
	PLOT DATE = 5/11/2012	DATE -	REVISED -

STATE OF ILLINOIS
DEPARTMENT OF TRANSPORTATION

IL 13 STAGE 7			
SCALE: 30	SHEET NO. 1 OF 1 SHEETS	STA.	TO STA.

F.A.P. RTE.	SECTION	COUNTY	TOTAL SHEETS	SHEET NO.
331	(1X-1)R-5,RS-3,N-5,TS-4	WILLIAMSON	288	75
CONTRACT NO. 78203				
ILLINOIS FED. AID PROJECT				