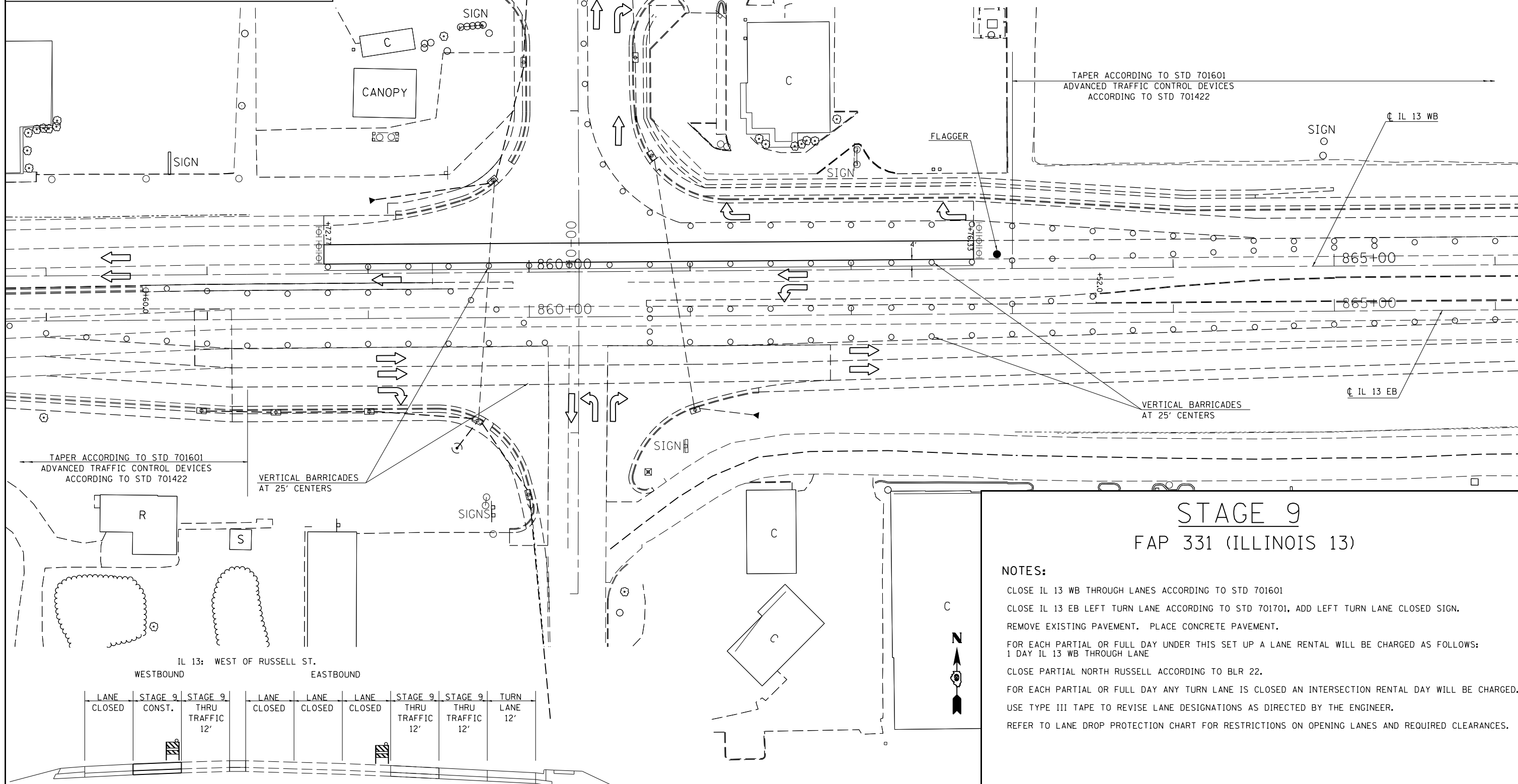
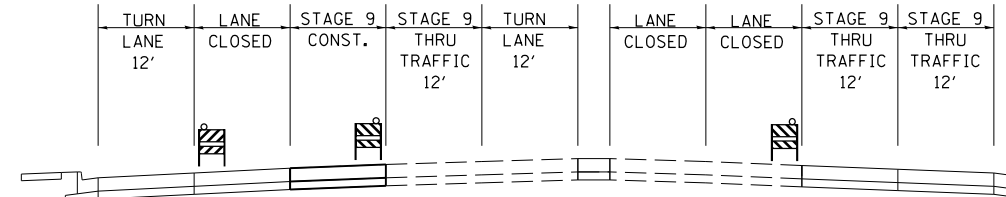


**SYMBOLS**

- CONE, DRUM, OR BARRICADE
- ⊕ TYPE I OR TYPE II BARRICADE WITH FLASHING LIGHT
- ⊕ TYPE III BARRICADE WITH FLASHING LIGHTS
- FLAGGER WITH TRAFFIC CONTROL SIGN

IL 13: EAST OF RUSSELL ST.  
WESTBOUND EASTBOUND



TAPER ACCORDING TO STD 701601  
ADVANCED TRAFFIC CONTROL DEVICES  
ACCORDING TO STD 701422

TAPER ACCORDING TO STD 701601  
ADVANCED TRAFFIC CONTROL DEVICES  
ACCORDING TO STD 701422

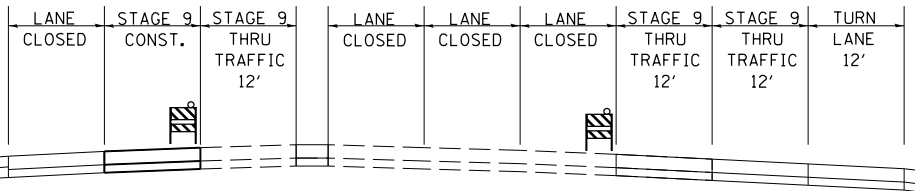
VERTICAL BARRICADES  
AT 25' CENTERS

VERTICAL BARRICADES  
AT 25' CENTERS

**STAGE 9**  
**FAP 331 (ILLINOIS 13)**

- NOTES:**
- CLOSE IL 13 WB THROUGH LANES ACCORDING TO STD 701601
  - CLOSE IL 13 EB LEFT TURN LANE ACCORDING TO STD 701701, ADD LEFT TURN LANE CLOSED SIGN.
  - REMOVE EXISTING PAVEMENT. PLACE CONCRETE PAVEMENT.
  - FOR EACH PARTIAL OR FULL DAY UNDER THIS SET UP A LANE RENTAL WILL BE CHARGED AS FOLLOWS:  
1 DAY IL 13 WB THROUGH LANE
  - CLOSE PARTIAL NORTH RUSSELL ACCORDING TO BLR 22.
  - FOR EACH PARTIAL OR FULL DAY ANY TURN LANE IS CLOSED AN INTERSECTION RENTAL DAY WILL BE CHARGED.
  - USE TYPE III TAPE TO REVISE LANE DESIGNATIONS AS DIRECTED BY THE ENGINEER.
  - REFER TO LANE DROP PROTECTION CHART FOR RESTRICTIONS ON OPENING LANES AND REQUIRED CLEARANCES.

IL 13: WEST OF RUSSELL ST.  
WESTBOUND EASTBOUND



FILE NAME =	USER NAME = \$USER\$	DESIGNED -	REVISED -
ei:\pw\work\p\dot\kellay\kd\0184451\78203-sht-stg.dgn		DRAWN -	REVISED -
	PLOT SCALE = 60.0000' / in.	CHECKED -	REVISED -
	PLOT DATE = 5/11/2012	DATE -	REVISED -

**STATE OF ILLINOIS**  
**DEPARTMENT OF TRANSPORTATION**

<b>IL 13 STAGE 9</b>			
SCALE: 30	SHEET NO. 1 OF 1 SHEETS	STA.	TO STA.

F.A.P. RTE.	SECTION	COUNTY	TOTAL SHEETS	SHEET NO.
331	(1X-1R-5,RS-3,N-5,TS-4	WILLIAMSON	288	77
CONTRACT NO. 78203				
ILLINOIS FED. AID PROJECT				