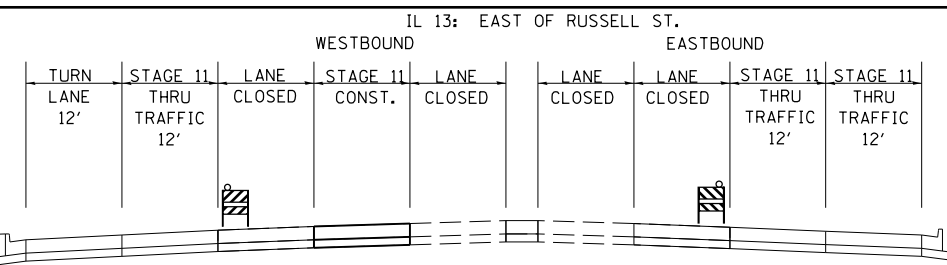
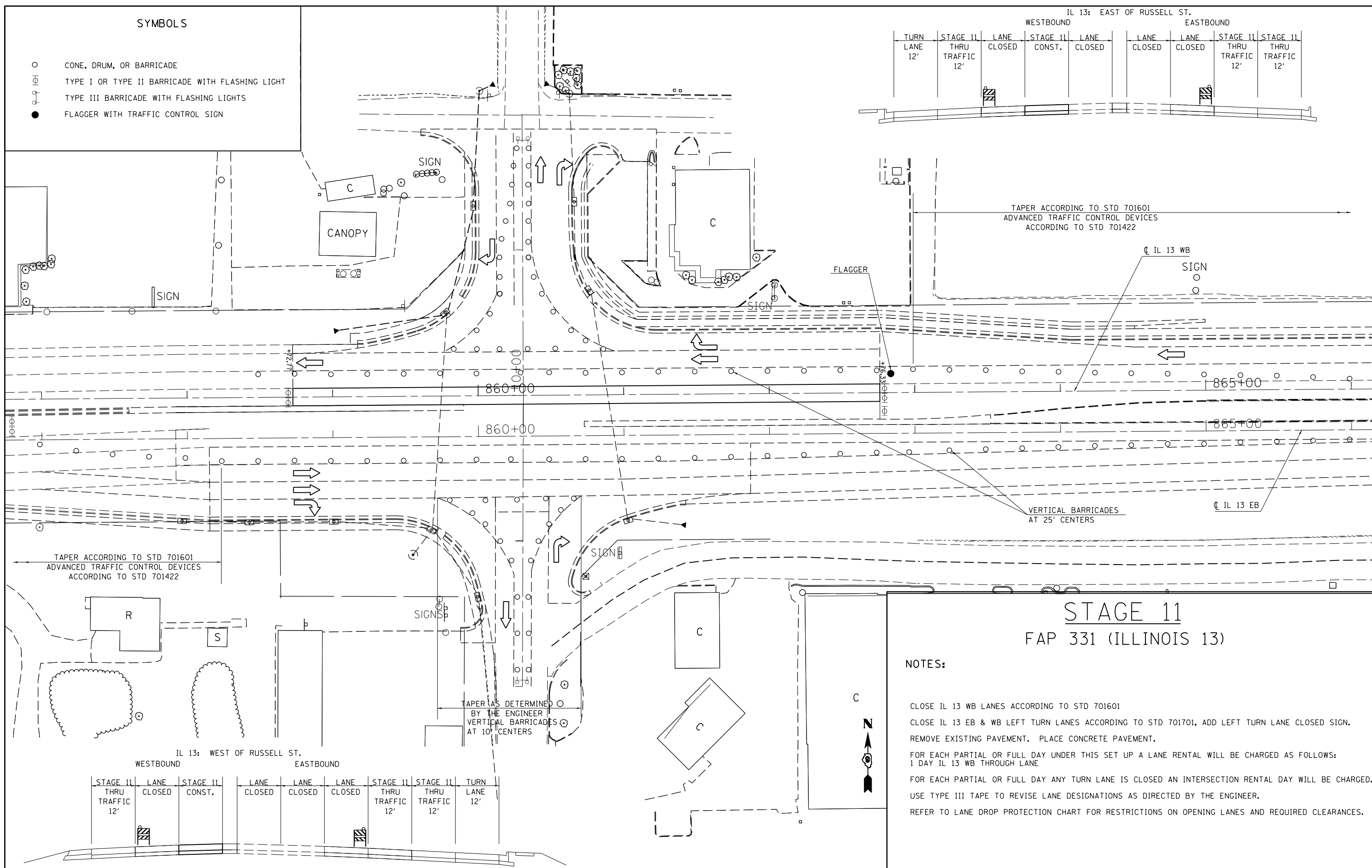


**SYMBOLS**

- CONE, DRUM, OR BARRICADE
- ⊕ TYPE I OR TYPE II BARRICADE WITH FLASHING LIGHT
- ⊕ TYPE III BARRICADE WITH FLASHING LIGHTS
- FLAGGER WITH TRAFFIC CONTROL SIGN



TAPER ACCORDING TO STD 701601  
ADVANCED TRAFFIC CONTROL DEVICES  
ACCORDING TO STD 701422

VERTICAL BARRICADES  
AT 25' CENTERS

TAPER ACCORDING TO STD 701601  
ADVANCED TRAFFIC CONTROL DEVICES  
ACCORDING TO STD 701422

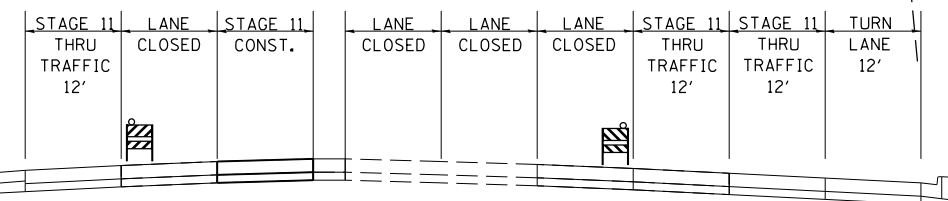
TAPER AS DETERMINED  
BY THE ENGINEER  
VERTICAL BARRICADES  
AT 10' CENTERS

## STAGE 11 FAP 331 (ILLINOIS 13)

**NOTES:**

- CLOSE IL 13 WB LANES ACCORDING TO STD 701601
- CLOSE IL 13 EB & WB LEFT TURN LANES ACCORDING TO STD 701701, ADD LEFT TURN LANE CLOSED SIGN.
- REMOVE EXISTING PAVEMENT. PLACE CONCRETE PAVEMENT.
- FOR EACH PARTIAL OR FULL DAY UNDER THIS SET UP A LANE RENTAL WILL BE CHARGED AS FOLLOWS:  
1 DAY IL 13 WB THROUGH LANE
- FOR EACH PARTIAL OR FULL DAY ANY TURN LANE IS CLOSED AN INTERSECTION RENTAL DAY WILL BE CHARGED.
- USE TYPE III TAPE TO REVISE LANE DESIGNATIONS AS DIRECTED BY THE ENGINEER.
- REFER TO LANE DROP PROTECTION CHART FOR RESTRICTIONS ON OPENING LANES AND REQUIRED CLEARANCES.

IL 13: WEST OF RUSSELL ST.  
WESTBOUND EASTBOUND



FILE NAME =	USER NAME = \$USER\$	DESIGNED -	REVISED -
ei:\pw\work\p\d01\kellaykd\0184451\78203-sht-stg.dgn		DRAWN -	REVISED -
		CHECKED -	REVISED -
		DATE -	REVISED -

**STATE OF ILLINOIS  
DEPARTMENT OF TRANSPORTATION**

<b>IL 13 STAGE 11</b>	
SCALE: 30	SHEET NO. 1 OF 1 SHEETS
STA.	TO STA.

F.A.P. RTE.	SECTION	COUNTY	TOTAL SHEETS	SHEET NO.
331	(1X-1)R-5,RS-3,N-5,TS-4	WILLIAMSON	288	79
CONTRACT NO. 78203				
ILLINOIS FED. AID PROJECT				