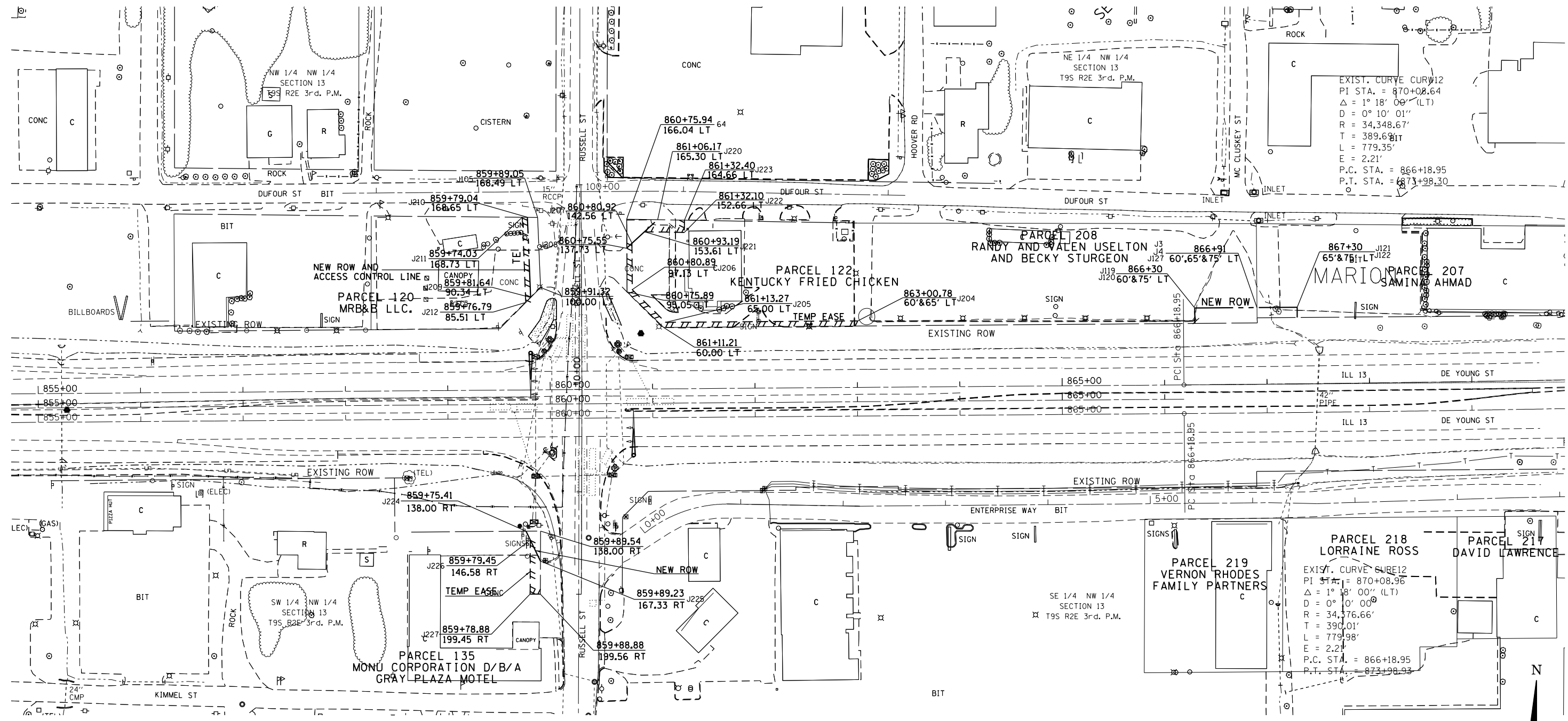


PARCEL #	PROPERTY OWNER	PURPOSE	ACREAGE
120	MRB&B, LLC	NEW ROW TEMP EASE	0.017± 0.009±
122	KENTUCKY FRIED CHICKEN	NEW ROW TEMP EASE	0.010± 0.041±
135	MONU CORP. D/B/A GRAY PLAZA MOTEL	NEW ROW TEMP EASE	0.005± 0.010±
207	SAMINA AHMAD	NEW ROW	0.009±
208	RANDY AND VALEN USELTON AND BECKY STURGEON	NEW ROW	0.021±



EXIST. CURVE CURV12
 PI STA. = 870+08.64
 $\Delta = 1^\circ 18' 00''$ (LT)
 $D = 0^\circ 10' 01''$
 $R = 34,348.67'$
 $T = 389.68'$
 $L = 779.35'$
 $E = 2.21'$
 P.C. STA. = 866+18.95
 P.T. STA. = 873+98.30

EXIST. CURVE CURV12
 PI STA. = 870+08.96
 $\Delta = 1^\circ 18' 00''$ (LT)
 $D = 0^\circ 10' 00''$
 $R = 34,376.66'$
 $T = 390.01'$
 $L = 779.98'$
 $E = 2.21'$
 P.C. STA. = 866+18.95
 P.T. STA. = 873+98.93

POINT COORDINATES

PT 64	N 391824.5110	E 808321.9460	PT J208	N 391796.1988	E 808321.7787
PT J3	N 391723.1784	E 808937.8289	PT J209	N 391748.0954	E 808228.2299
PT J4	N 391728.1760	E 808937.5027	PT J210	N 391826.3799	E 808225.0327
PT J105	N 391826.2983	E 808235.0444	PT J211	N 391826.4207	E 808220.0269
PT J119	N 391722.7117	E 808876.8043	PT J212	N 391743.2302	E 808223.4244
PT J120	N 391737.7112	E 808876.6896	PT J220	N 391824.0031	E 808352.1833
PT J121	N 391738.4760	E 808976.6867	PT J221	N 391812.2179	E 808339.2959
PT J122	N 391728.4763	E 808976.7631	PT J222	N 391811.5642	E 808378.2155
PT J127	N 391738.1758	E 808937.4262	PT J223	N 391823.5625	E 808378.4170
PT J204	N 391725.1937	E 808547.5593	PT J224	N 391519.7113	E 808223.7494
PT J205	N 391723.7596	E 808360.0482	PT J225	N 391490.4847	E 808237.7897
PT J206	N 391755.6383	E 808327.4263	PT J226	N 391511.1670	E 808227.8540
PT J207	N 391801.0724	E 808327.1080	PT J227	N 391458.2893	E 808227.6893

NOTE:
 THE TRANSIT LINE IS USED ON
 R.O.W. SHEETS FOR THE STATIONS
 AND OFFSETS ON PARCELS.

FILE NAME	USER NAME	DESIGNED	REVISIONS	RIGHT OF WAY PLANS		F.A.P. RTE.	SECTION	COUNTY	TOTAL SHEETS	SHEET NO.
ct:\pw\work\p\d0t\kellykd\0184451\900810-sh.tdgn	= kellykd	-	-	STATE OF ILLINOIS DEPARTMENT OF TRANSPORTATION		331	(1X-1R-5,RS-3,N-5,TS-4)	WILLIAMSON	288	112
						PROJECT D905910		JOB NO. R-99-008-10		
						SCALE: 50		SHEET 1 OF 3 SHEETS		
						STA. 855+00 TO STA. 869+50		CONTRACT NO. 78203		
						FED. ROAD DIST. NO. ILLINOIS FED. AID PROJECT				