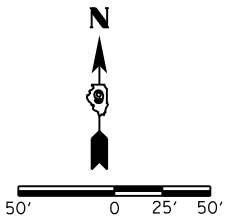
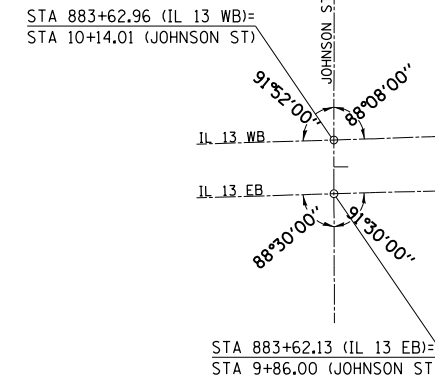
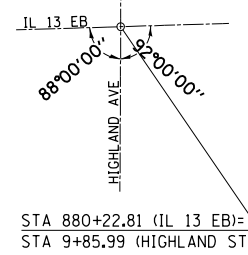
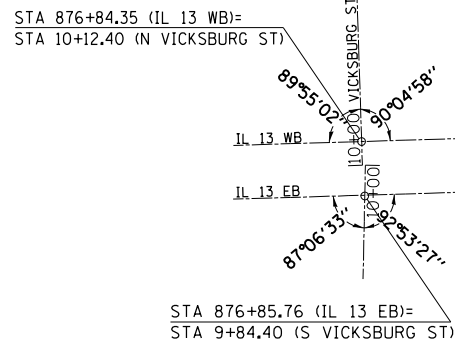
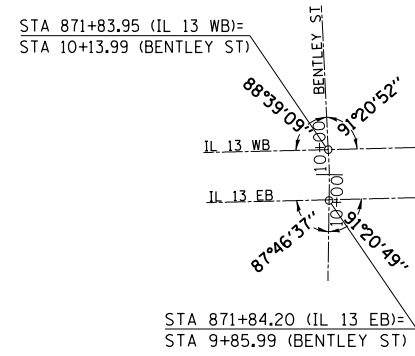
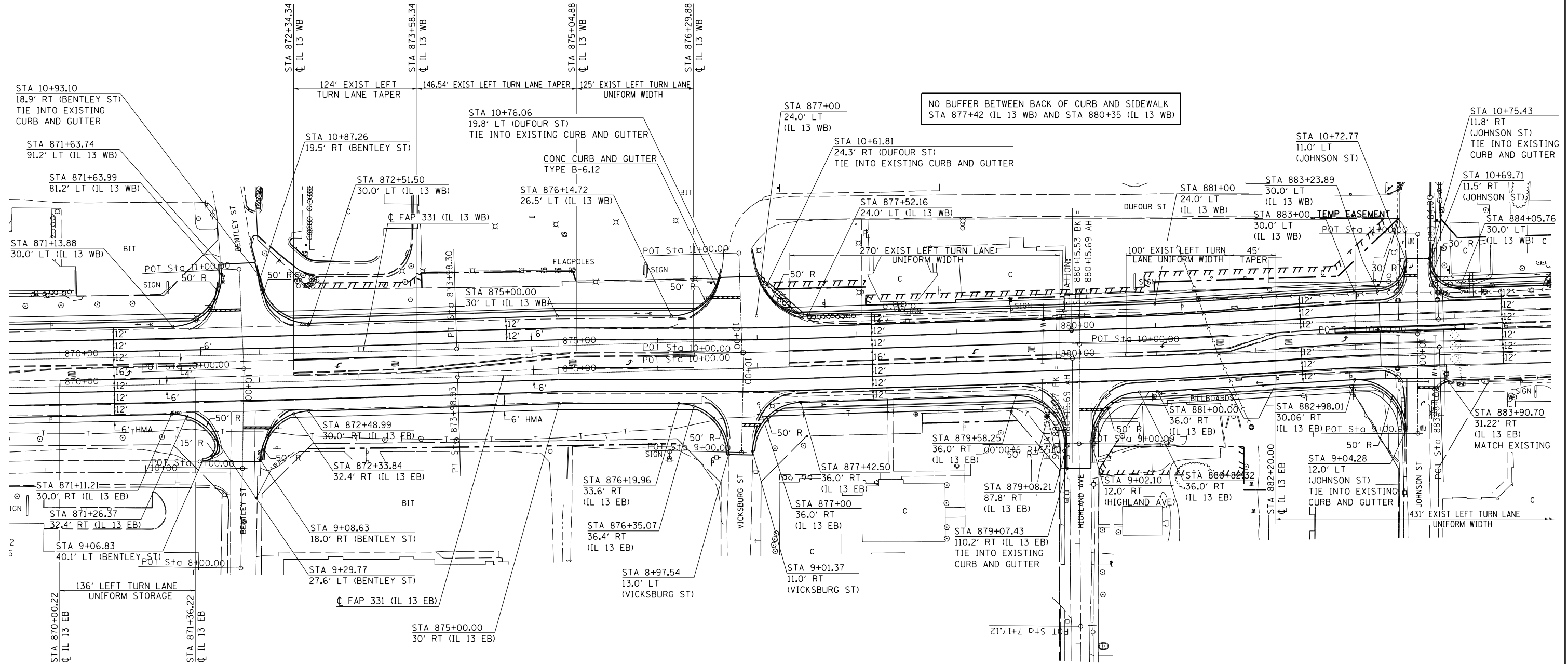


INTERSECTION DETAILS



EXISTING TURN LANE TAPERS AND UNIFORM STORAGE TO REMAIN IN PLACE FOR BENTLEY ST., VICKSBURG ST., HIGHLAND AVE., JOHNSON ST., AND IL 13.

EXTEND MEDIAN ACROSS JOHNSON STREET TO CREATE RIGHT IN/RIGHT OUT ACCESS TO THE NORTH AND SOUTH LEG OF JOHNSON ST



NO BUFFER BETWEEN BACK OF CURB AND SIDEWALK
STA 877+42 (IL 13 WB) AND STA 880+35 (IL 13 WB)

FILE NAME =	USER NAME = \$USER\$	DESIGNED -	REVISED -	STATE OF ILLINOIS DEPARTMENT OF TRANSPORTATION	GEOMETRICS			F.A.P. RTE.	SECTION	COUNTY	TOTAL SHEETS	SHEET NO.	
et:\pw\work\p\midot\kellayka\d0184451\78203-sh1-geo2.dgn		DRAWN -	REVISED -		SCALE:	SHEET NO.	OF SHEETS	STA.	TO STA.	331 (1X-1R-5,RS-3,N-5,TS-4)	WILLIAMSON	288	117
		CHECKED -	REVISED -										
		DATE -	REVISED -										

ILLINOIS FED. AID PROJECT

CONTRACT NO. 78203