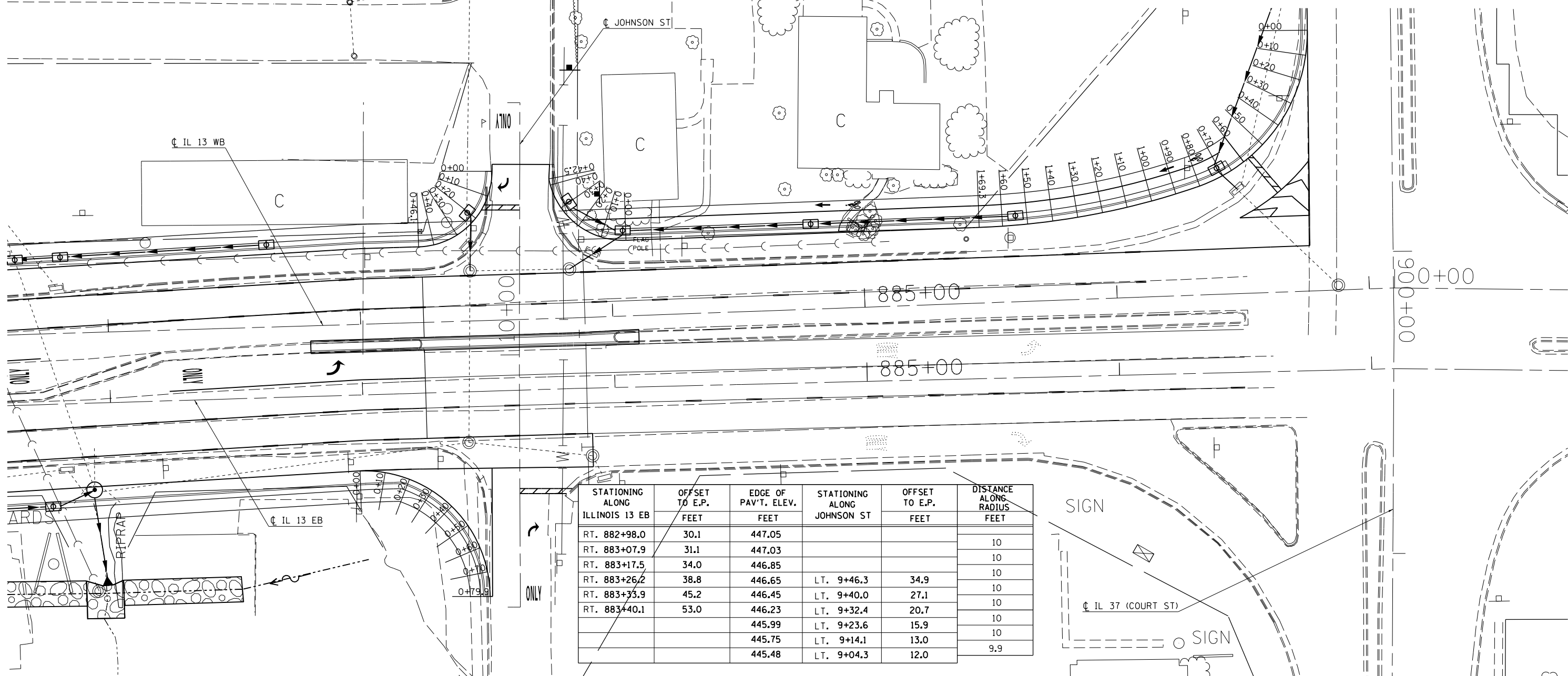
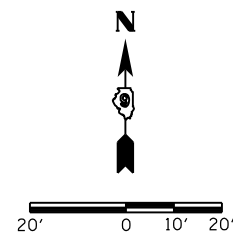


STATIONING ALONG JOHNSON ST	OFFSET TO E.P. FEET	EDGE OF PAV'T. ELEV. FEET	STATIONING ALONG ILLINOIS 13 WB	OFFSET TO E.P. FEET	DISTANCE ALONG RADIUS FEET
LT. 10+72.7	11.0	447.49			10
LT. 10+62.9	12.7	447.32			10
LT. 10+54.2	17.4	447.19			10
LT. 10+47.5	24.8	447.12	LT. 883+39.3	34.2	10
LT. 10+43.5	33.9	447.08	LT. 883+30.0	30.6	10
		447.08	LT. 883+23.9	30.0	6.1

STATIONING ALONG ILLINOIS 13 WB	OFFSET TO E.P. FEET	EDGE OF PAV'T. ELEV. FEET	STATIONING ALONG JOHNSON ST	OFFSET TO E.P. FEET	DISTANCE ALONG RADIUS FEET
LT. 884+06.3	30.0	447.34			10
LT. 883+96.5	31.7	447.20	RT. 10+46.8	32.3	10
LT. 883+87.8	36.4	447.14	RT. 10+51.2	23.4	10
		447.21	RT. 10+58.3	16.4	10
		447.43	RT. 10+67.3	12.1	10
		447.48	RT. 10+69.8	11.6	2.5

STATIONING ALONG ILLINOIS 37 (COURT ST)	OFFSET TO E.P. FEET	EDGE OF PAV'T. ELEV. FEET	STATIONING ALONG ILLINOIS 13	OFFSET TO E.P. FEET	DISTANCE ALONG RADIUS FEET
RT. 899+11.9	33.0	451.66			10
RT. 899+21.9	33.8	451.56			10
RT. 899+31.6	36.1	451.32			10
RT. 899+40.8	39.8	450.86			10
RT. 899+49.4	44.9	450.44	LT. 886+66.3	66.2	10
RT. 899+57.1	51.3	450.06	LT. 886+59.7	58.6	10
RT. 899+63.7	58.8	449.73	LT. 886+52.1	52.2	10
		449.44	LT. 886+43.6	47.0	10
		449.19	LT. 886+34.3	43.2	10
		448.99	LT. 886+24.7	40.4	10
		448.83	LT. 886+15.0	38.0	10
		448.71	LT. 886+05.3	35.8	10
		448.63	LT. 885+95.4	34.0	10
		448.58	LT. 885+85.5	32.6	10
		448.51	LT. 885+75.6	31.4	10
		448.42	LT. 885+65.6	30.6	10
		448.33	LT. 885+55.6	30.1	10
		448.25	LT. 885+46.4	30.0	9.3



STATIONING ALONG ILLINOIS 13 EB	OFFSET TO E.P. FEET	EDGE OF PAV'T. ELEV. FEET	STATIONING ALONG JOHNSON ST	OFFSET TO E.P. FEET	DISTANCE ALONG RADIUS FEET
RT. 882+98.0	30.1	447.05			10
RT. 883+07.9	31.1	447.03			10
RT. 883+17.5	34.0	446.85			10
RT. 883+26.2	38.8	446.65	LT. 9+46.3	34.9	10
RT. 883+35.9	45.2	446.45	LT. 9+40.0	27.1	10
RT. 883+40.1	53.0	446.23	LT. 9+32.4	20.7	10
		445.99	LT. 9+23.6	15.9	10
		445.75	LT. 9+14.1	13.0	10
		445.48	LT. 9+04.3	12.0	9.9

FILE NAME =	USER NAME = \$USER\$	DESIGNED -	REVISED -
c:\pwwork\pwwork\kellaykd\0184451\78203-sht-geo.dgn		DRAWN -	REVISED -
		CHECKED -	REVISED -
		DATE -	REVISED -

**STATE OF ILLINOIS  
DEPARTMENT OF TRANSPORTATION**

**JOHNSON ST AND COURT ST  
GEOMETRICS**

SCALE: SHEET NO. OF SHEETS STA. TO STA.

F.A.P. RTE.	SECTION	COUNTY	TOTAL SHEETS	SHEET NO.
331	(1X-1R-5,RS-3,N-5,TS-4	WILLIAMSON	288	123
ILLINOIS FED. AID PROJECT			CONTRACT NO. 78203	