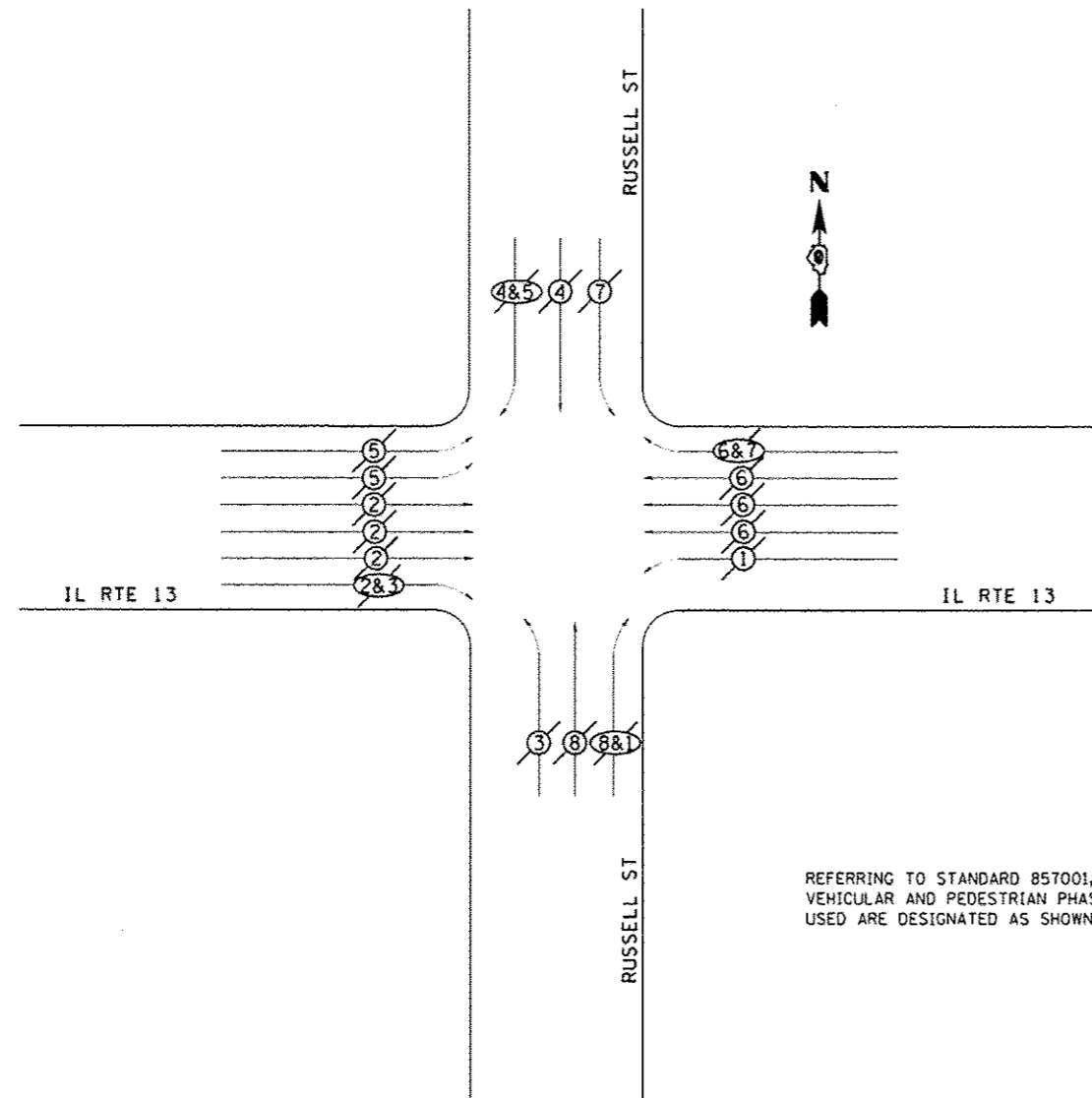
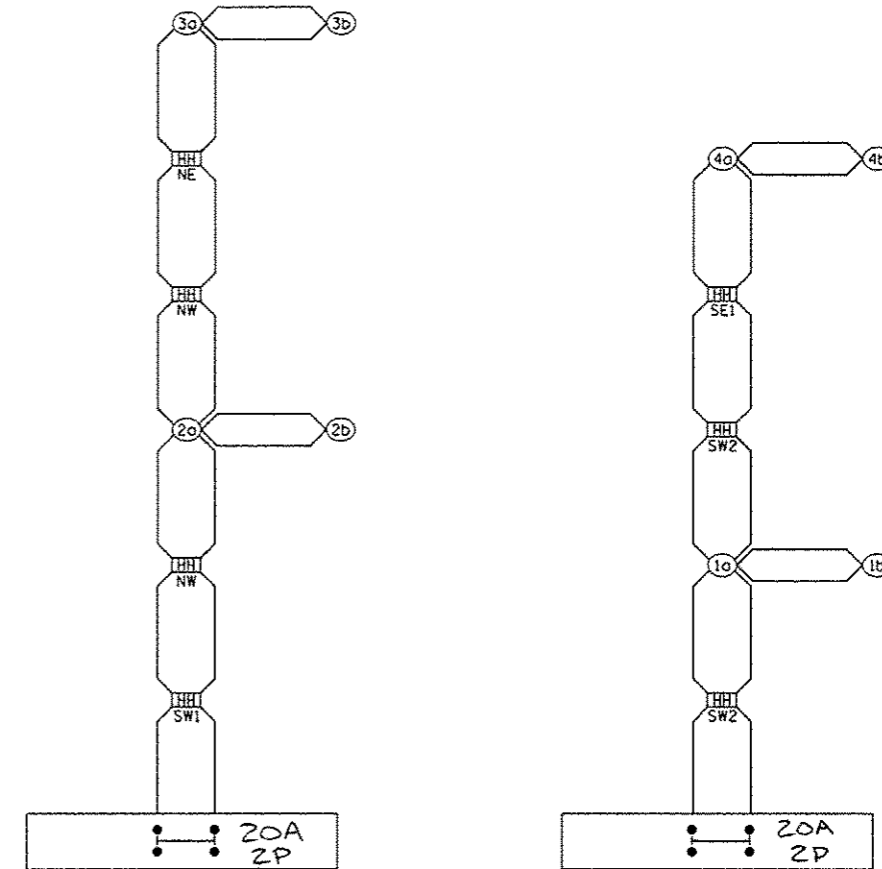


**PHASE DESIGNATION DIAGRAM
IL RTE 13 WITH RUSSELL ST**



LEGEND

- VEHICULAR MOVEMENT
- PEDESTRIAN MOVEMENT
- NUMBER REFERS TO ASSOCIATED PHASE



- SW1 SOUTHWEST CORNER
STA 859+46.50 89.7' RT (IL 13 EB)
- SW2 SOUTHWEST CORNER
STA 8+81 53.9' LT (RUSSELL ST)
- NW NORTHWEST CORNER
STA 859+50, 55.0' LT (IL 13 WB)
- NE NORTHEAST CORNER
STA 861+11 49' LT (IL 13 WB)
- SE1 SOUTHEAST CORNER
STA 860+88 73.4' RT (IL 13 EB)

PROPOSED CONTROL INSTALLATION
PHOTOCELL RELAY
20 AMP - 240 VOLT

FILE NAME :	USER NAME : #USER#	DESIGNED -	REVISED -
c:\p\work\spw\dot\kellag\dot\0184451\78203.dwg	draht-taig.dgn	DRAWN -	REVISED -
	PLOT SCALE = 40.0000 1" = 40'	CHECKED -	REVISED -
	PLOT DATE = 5/11/2012	DATE -	REVISED -

**STATE OF ILLINOIS
DEPARTMENT OF TRANSPORTATION**

PHASE DESIGNATION DIAGRAM - RUSSELL ST.	
SCALE:	SHEET NO. OF SHEETS STA. TO STA.

F.A. RTE.	SECTION	COUNTY	TOTAL SHEETS	SHEET NO.
331	(IX-11R-5,RS-3,N-5,TS-4	WILLIAMSON	288	135
CONTRACT NO. 78203			ILLINOIS FED. AID PROJECT	