

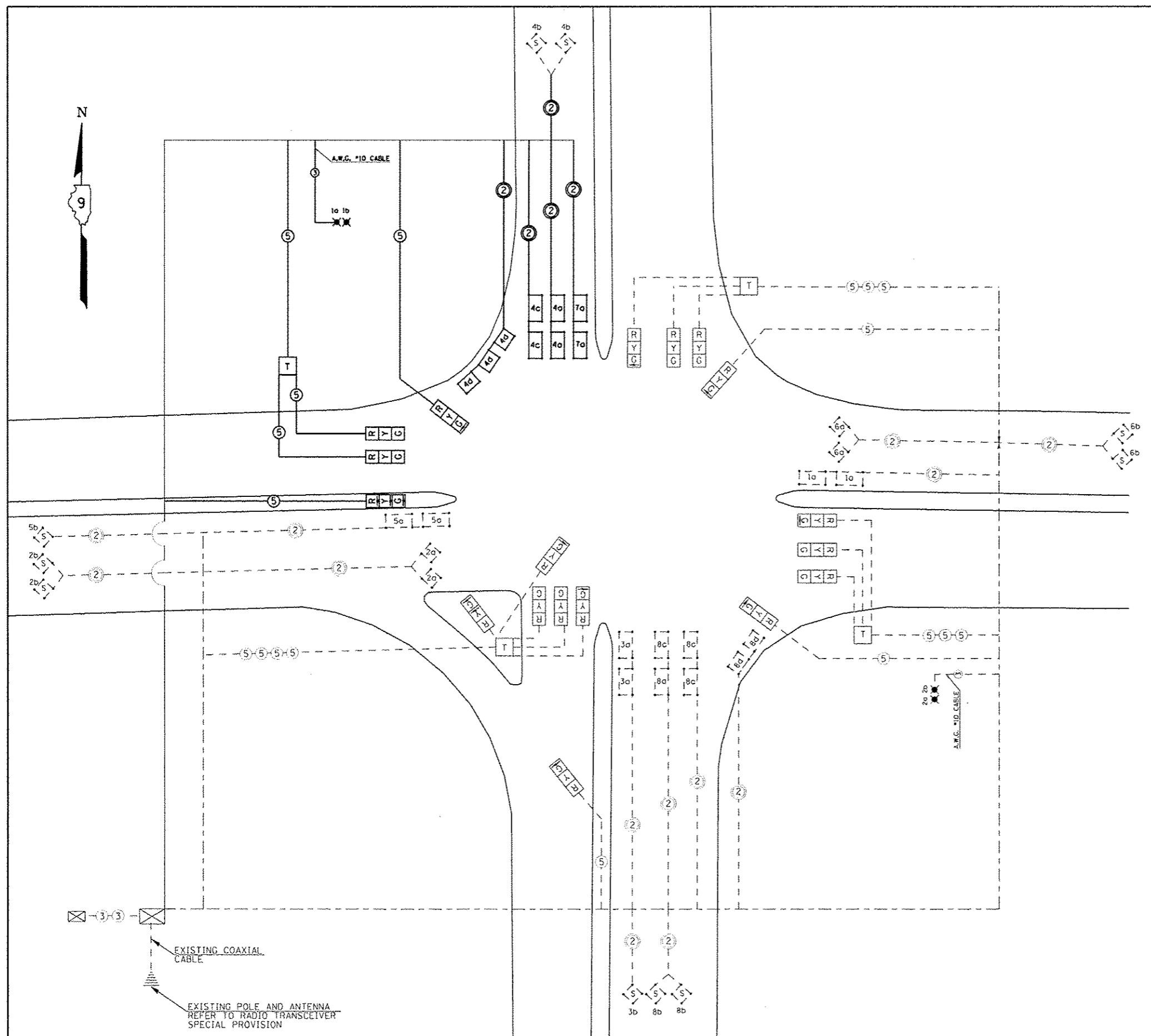


NOTES

1. ALL CABLES SHALL BE A.W.G. #14 UNLESS OTHERWISE NOTED.
2. ELECTRIC SERVICE IS SUPPLIED BY AMEREN CIPS.
3. ELECTRIC CABLE DENOTED AS 3-1/2 NO.10 BEING INSTALLED TO THE COMBINATION MAST ARM POLES SHALL NOT GO THROUGH THE TERMINAL BLOCK BUT SHOULD BE SPLICED IN POLE. SEE STEEL COMB. MAST ARM ASSEMBLY AND POLE DETAIL.
4. PROPOSED COAXIAL CABLE AND ANTENNA INCLUDED IN THE COST OF FULL-ACTUATED CONTROLLER IN TYPE IV CABINET.
5. PROPOSED 2/C ELECTRIC CABLE SHOWN IN CABLE DIAGRAM ARE PAID FOR IN FEET AS ELECTRIC CABLE IN CONDUIT, LEAD-IN, NO. 14 (1 PAIR).
6. ALL SIGNAL LENSES SHALL BE 12 INCHES.

LEGEND

- EXISTING CONDUIT
- - - EXISTING CABLE
- PROPOSED CABLE
- 5a INDICATES 20' X 6' LOOP WITH 2" CORE DRILLED CORNERS; NUMBER INDICATES PHASE, LOWER CASE LETTER INDICATES AMPLIFIER, "S" INDICATES SYSTEM LOOP.
- 5b INDICATES 12' X 6' LOOP WITH 2" CORE DRILLED CORNERS; NUMBER INDICATES PHASE, LOWER CASE LETTER INDICATES AMPLIFIER, "S" INDICATES SYSTEM LOOP.
- 6a S INDICATES EXISTING 5'x5' LOOP WITH 2" CORE DRILLED CORNERS; NUMBER INDICATES PHASE, LOWER CASE LETTER INDICATES AMPLIFIER, "S" INDICATES SYSTEM LOOP.
- 2 INDICATES 2/C TWISTED, SHIELDED CABLE IN CONDUIT.
- 5 NUMBER IN CIRCLE INDICATES NUMBER OF CONDUCTORS IN THAT CABLE.
- ⊗ EXISTING LIGHTING CONTROLLER
- T INDICATES EXISTING TERMINAL BLOCK IN MAST ARM POLE
- ⊗ 2a INDICATES TWIN TENON FOR TWO LUMINAIRES. NUMBER INDICATES POSITION OF POLE IN WIRING DIAGRAM. LETTER INDICATES LUMINAIRE ON POLE.
- C 12" TRAFFIC SIGNAL SECTION. LETTER INDICATES COLOR.



FILE NAME : c:\pwwork\pwwork\kellykd\02184451\78203	USER NAME : *USER*	DESIGNED -	REVISED -	STATE OF ILLINOIS DEPARTMENT OF TRANSPORTATION	TRAFFIC SIGNALS CABLE DIAGRAM - IL 13 /IL 37		F.A. RTE.	SECTION	COUNTY	TOTAL SHEETS	SHEET NO.
	PLOT SCALE = 48,0000' / in.	DRAWN -	REVISED -		331	(IX-1)R-5,RS-3,N-5,TS-4	WILLIAMSON	288	138	CONTRACT NO. 78203	ILLINOIS FED. AID PROJECT
PLOT DATE = 5/11/2012	CHECKED -	REVISED -	SCALE: SHEET NO. OF SHEETS STA. TO STA.								
	DATE -	REVISED -									