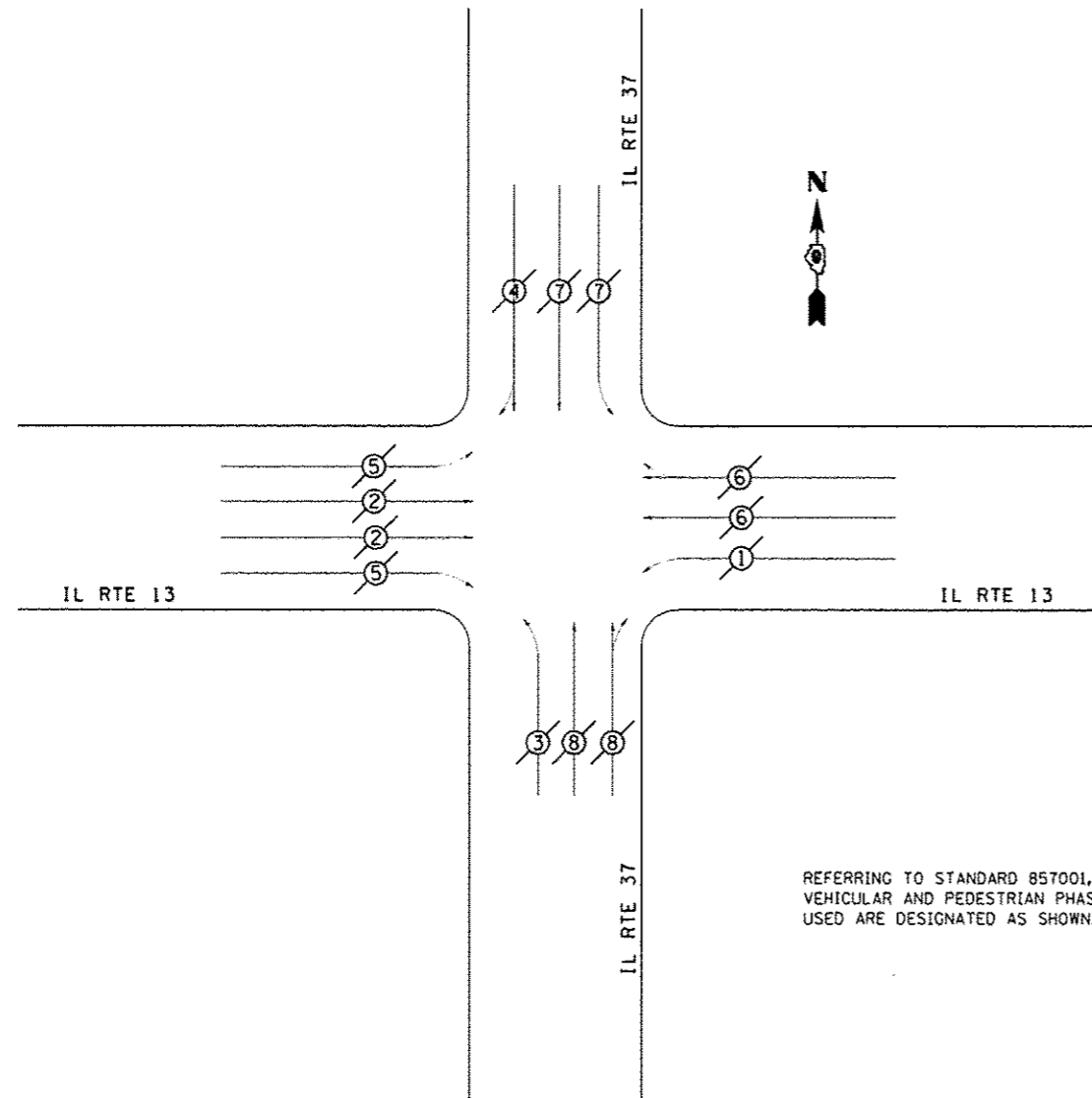


# PHASE DESIGNATION DIAGRAM

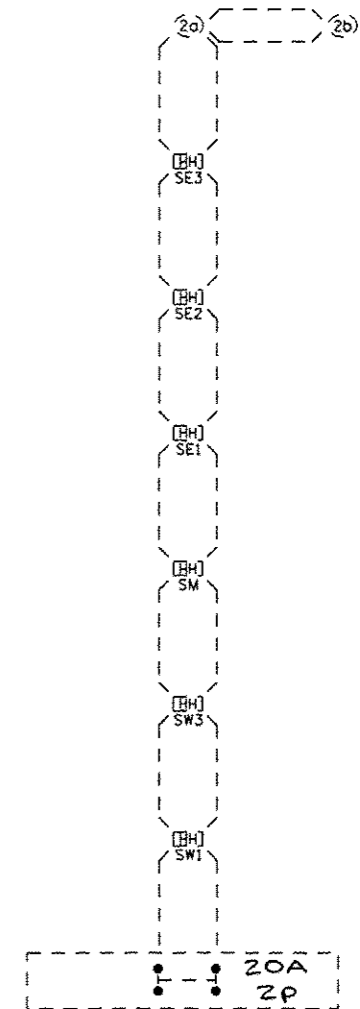
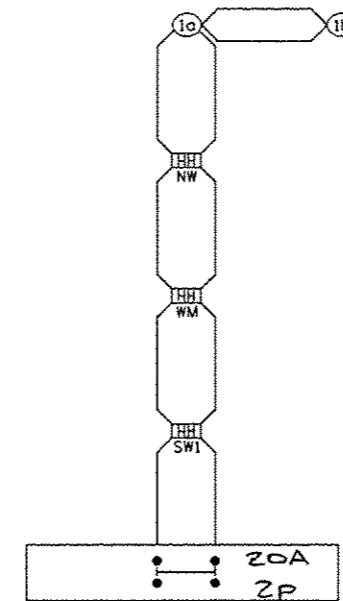
## IL RTE 13 WITH IL RTE 37



REFERRING TO STANDARD 857001, THE VEHICULAR AND PEDESTRIAN PHASES USED ARE DESIGNATED AS SHOWN.

### LEGEND

- VEHICULAR MOVEMENT
- PEDESTRIAN MOVEMENT
- NUMBER REFERS TO ASSOCIATED PHASE



- SW1 SOUTHWEST CORNER  
STA 884+25 62.6' RT (IL 13 EB)
- SW2 SOUTHWEST CORNER  
STA 886+52 26.0' RT (IL 13 EB)
- SW3 SOUTHWEST CORNER  
STA 1+27 52.1' RT (IL 37)
- NW NORTHWEST CORNER  
STA 886+61 67.2' LT (IL 13 WB)
- SM SOUTH MEDIAN  
STA 1+26 7.8' RT (IL 37)
- SE1 SOUTHEAST CORNER  
STA 1+25 41.7' LT (IL 37)
- SE2 SOUTHEAST CORNER  
STA 1+00 46.0' LT (IL 37)
- SE3 SOUTHEAST CORNER  
STA 0+88 31.4' LT (IL 13 EB)
- WM WEST MEDIAN  
STA 886+42 21.7' LT (IL 13 EB)

PROPOSED CONTROL INSTALLATION  
PHOTOCELL RELAY  
20 AMP - 240 VOLT

|                                      |                               |            |           |
|--------------------------------------|-------------------------------|------------|-----------|
| FILE NAME :                          | USER NAME :                   | DESIGNED : | REVISED : |
| c:\pwork\pedit\kelly\k02104451\78203 | ash-taiq.dgn                  | ---        | ---       |
|                                      | PLLOT SCALE = 40,0000 1 / in. | CHECKED :  | REVISED : |
|                                      | PLLOT DATE = 5/11/2012        | DATE :     | REVISED : |

STATE OF ILLINOIS  
DEPARTMENT OF TRANSPORTATION

PHASE DESIGNATION  
DIAGRAM - IL 37

SCALE: SHEET NO. OF SHEETS STA. TO STA.

| F.A. RTE.          | SECTION                 | COUNTY     | TOTAL SHEETS              | SHEET NO. |
|--------------------|-------------------------|------------|---------------------------|-----------|
| 331                | (1X-1)R-5,RS-3,N-5,TS-4 | WILLIAMSON | 288                       | 139       |
| CONTRACT NO. 78203 |                         |            | ILLINOIS FED. AID PROJECT |           |