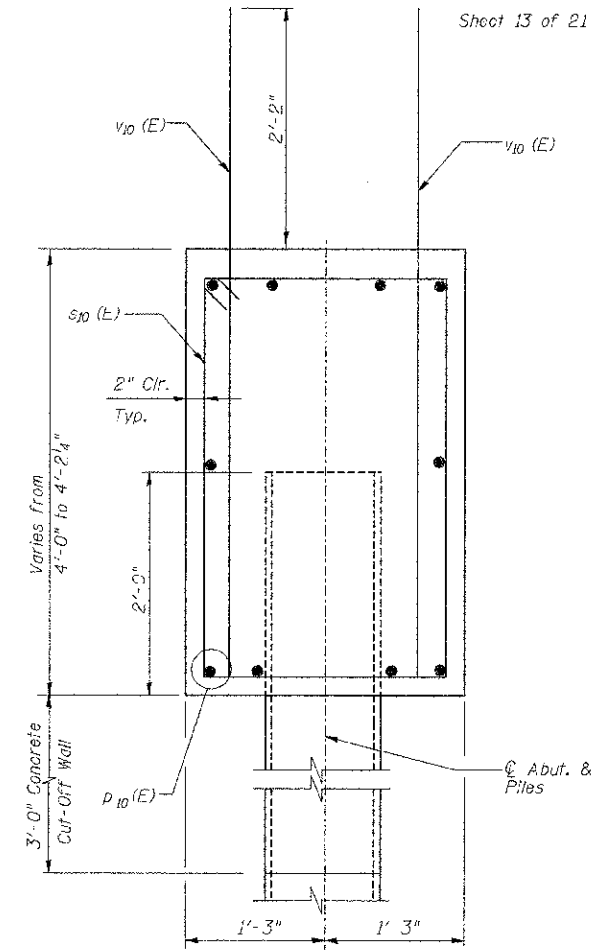
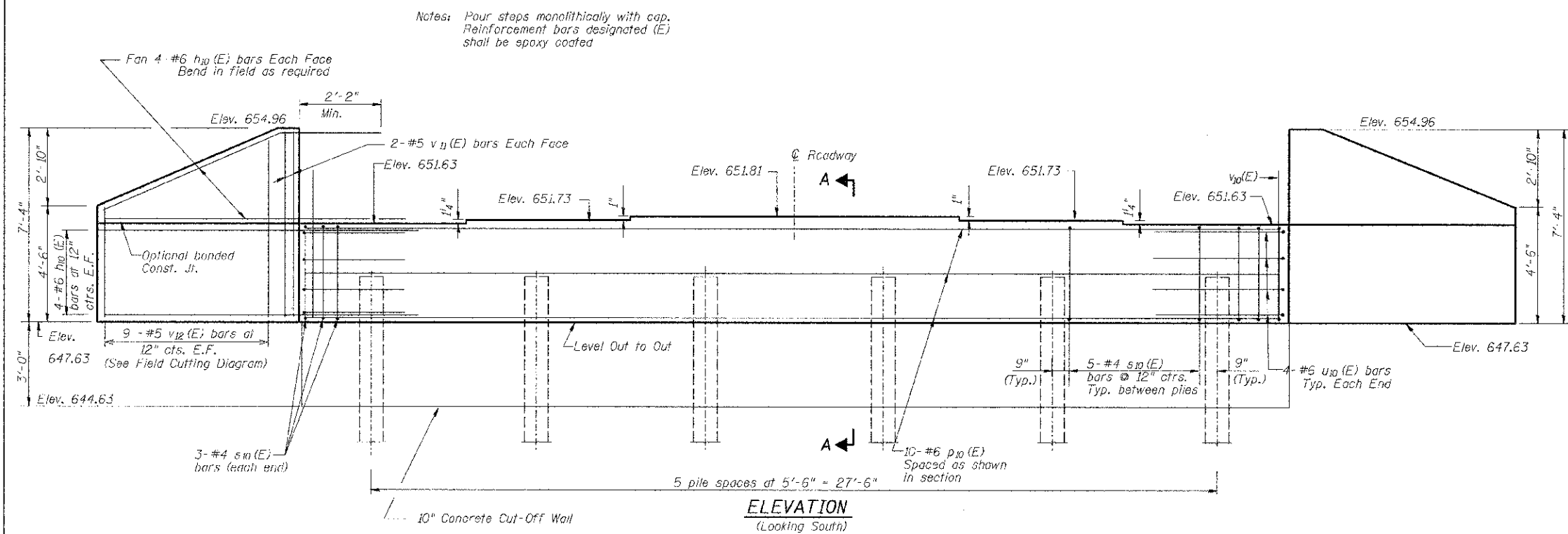
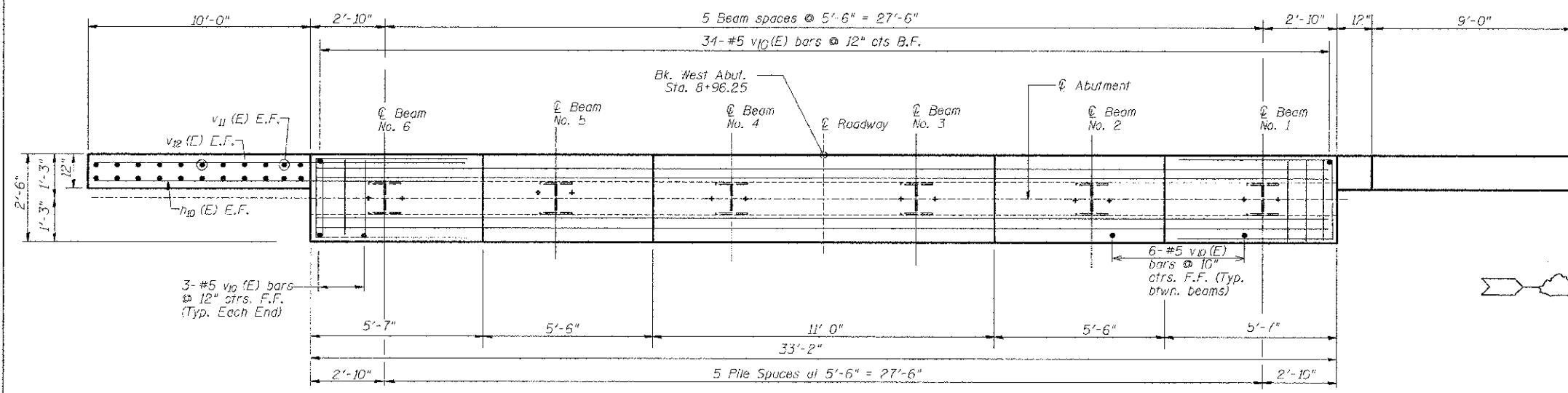


ROUTE NO.	SECTION	COUNTY	TOTAL SHEETS	SHEET NO.
C-4.16	07-00944-00-BR	CHAMPAIGN	45	22
STA.	TO STA.			
F.H.R.A. REG.	ILLINOIS PROJECT			

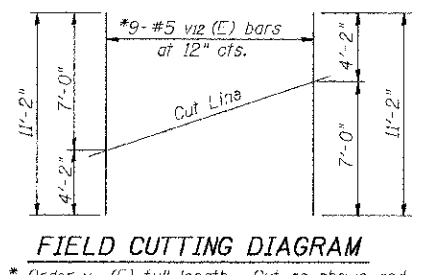
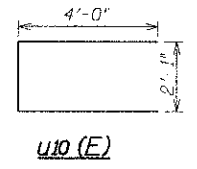
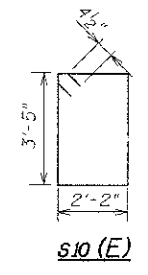
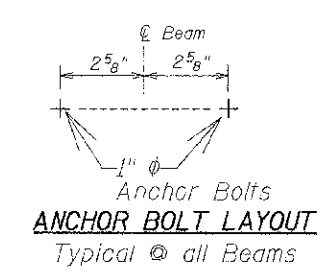


BILL OF MATERIAL

Bar	No.	Size	Length	Shape
v_{10} (E)	32	#6	12'-6"	—
p_{10} (E)	10	#6	32'-10"	—
s_{10} (E)	31	#4	11'-11"	□
u_{10} (E)	8	#6	10'-1"	⊔
v_{11} (E)	70	#5	6'-2"	—
v_{12} (E)	8	#5	7'-0"	—
v_{10} (E)	18	#5	11'-2"	—
Structure Excavation		Cu. Yd.	97	
Concrete Structures		Cu. Yd.	17.1	
Reinforcement Bars		Pound	2180	
Epoxy Coated				
Furnishing Steel Piles		Foot	200	
HP10X42				
Driving Piles		Foot	200	
Concrete Cut-Off Wall		Cu. Yd.	3.1	
Pile Shoes		Each	6	
Test Pile HP10X42		Each	1	



Note: All edges shall have a standard $\frac{3}{4}$ " chamfer except as noted. One test pile is required at South Abutment.



PILE DATA
Type: Steel HP10X42
Nominal Req'd Bearing: 222 kips
Allowable Resistance Available: 74 kips
Est. Length: 40'
No. Required: 5
Test Pile: 1

* Order v_{12} (E) full length. Cut as shown and use remainder of bars in opposite face.

WEST ABUTMENT
SECTION: 07-00944-00-BR
CHAMPAIGN COUNTY
⊗ STATION 10+00