

T.R. RTE.	SECTION	COUNTY	TOTAL SHEETS	SHEET NO.
307A	08-04118-00-BR	CHRISTIAN	26	1
FED. ROAD DIST. NO.	ILLINOIS	CONTRACT NO. 93567		

INDEX OF SHEETS

SHEET NO.	DESCRIPTION
1	COVER SHEET
2	SUMMARY OF QUANTITIES, GENERAL NOTES AND CENTERLINE TIES
3	SCHEDULE OF QUANTITIES
4	TYPICAL SECTIONS
5	ROADWAY PLAN AND PROFILE
6	EROSION CONTROL PLAN
7 - 8	RIGHT OF WAY PLAN
9 - 18	BRIDGE PLANS
19 - 26	CROSS SECTIONS

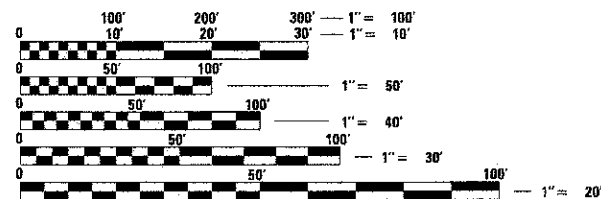
STANDARDS

000001-06	STANDARD SYMBOLS, ABBREVIATIONS AND PATTERNS
280001-06	TEMPORARY EROSION CONTROL SYSTEMS
515001-03	NAME PLATE FOR BRIDGE
630301-05	SHOULDER WIDENING FOR TYPE 1 (SPECIAL) GUARDRAIL TERMINALS
635006-03	REFLECTOR AND TERMINAL MARKER PLACEMENT
701901-02	TRAFFIC CONTROL DEVICES
BLR 21-9	TYPICAL APPLICATION OF TRAFFIC CONTROL DEVICES FOR CONSTRUCTION ON RURAL LOCAL HIGHWAYS
BLR 26-3	STEEL PLATE BEAM GUARDRAIL (27 1/2" HGT)
BLR 27-1	TRAFFIC BARRIER TERMINAL TYPE 5A

UTILITIES

ILLINOIS CONSOLIDATED TELEPHONE
LITCHFIELD, ILLINOIS 62056

SHELBY ELECTRIC COOPERATIVE
SHELBYVILLE, ILLINOIS 62565



FULL SIZE PLANS HAVE BEEN PREPARED USING STANDARD ENGINEERING SCALES. REDUCED SIZED PLANS WILL NOT CONFORM TO STANDARD SCALES. IN MAKING MEASUREMENTS ON REDUCED PLANS, THE ABOVE SCALES MAY BE USED.

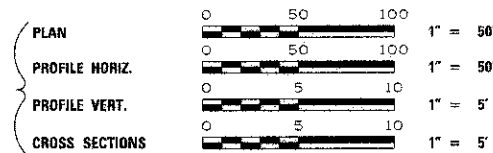
J.U.L.I.E.
JOINT UTILITY LOCATION INFORMATION FOR EXCAVATION
1-800-892-0123
OR 811

PROJECT ENGINEER
PROJECT MANAGER

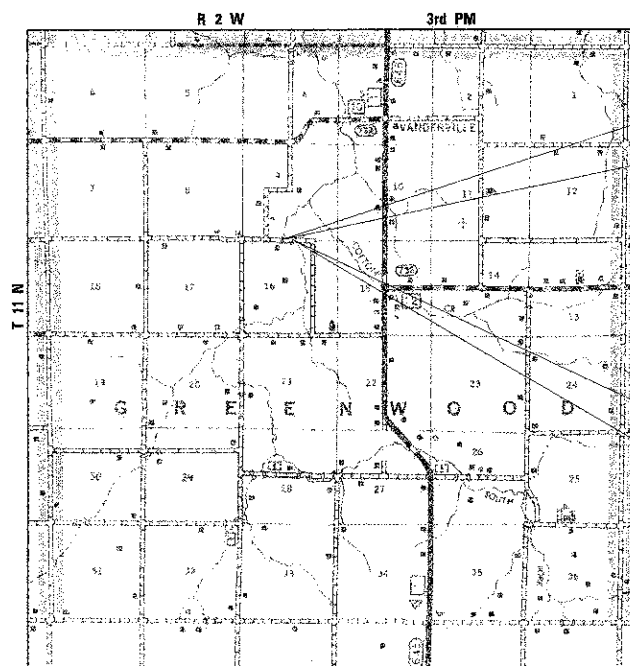
CONTRACT NO. 93567

STATE OF ILLINOIS
DEPARTMENT OF TRANSPORTATION
DIVISION OF HIGHWAYS
PLANS FOR

PROPOSED LOCAL AGENCY IMPROVEMENTS
HIGHWAY BRIDGE PROGRAM



TR ROUTE 307A
SECTION 08-04118-00-BR
CHRISTIAN COUNTY
GREENWOOD ROAD DISTRICT
PROJECT BROS-0021(178)
JOB NUMBER C-96-225-10



LOCATION MAP

NET LENGTH OF PROJECT = 1300.00 FEET = 0.246 MILES

DESIGN DESIGNATION

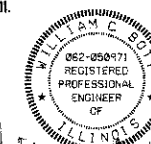
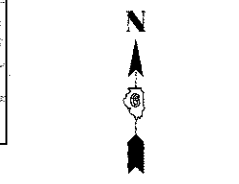
LOCAL ROAD: ADT < 150
DESIGN SPEED: 30 MPH

STA. 11+00.00
BEGIN IMPROVEMENTS
SECTION 08-04118-00-BR

EXISTING STRUCTURE NO. 011-3247
EXISTING 61' X 14' SINGLE SPAN PONY TRUSS BRIDGE

PROPOSED STRUCTURE NO. 011-3417
THREE SPAN PPC DECK BEAM BRIDGE ON REINFORCED CONCRETE
SPILL THRU ABUTMENTS AND CONCRETE ENCASED PILE BENT PIERS.
105'-0" BACK TO BACK ABUTMENTS, 24'-0" OUT TO OUT DECK

STA. 24+00.00
END IMPROVEMENTS
SECTION 08-04118-00-BR



William C. Scott 12/15/2011
EXPIRES: 11/30/13

APPROVED	<i>Clegg D. Fox</i> 12/16/11	20 11
	COUNTY ENGINEER	
APPROVED	<i>Wade Liggett</i> 12/16/11	20 11
	ROAD COMMISSIONER	
PASSED	<i>February 17</i> 20 12	20 12
	<i>Teresa H. Fawcett</i> DISTRICT SIX ENGINEER OF LOCAL ROADS & STREETS	
PASSED	<i>February 17</i> 20 12	20 12
	<i>Ron DeHambrook</i> DISTRICT SIX ENGINEER OF CONSTRUCTION	
Releasing For Bid Based on Limited Review	<i>February 17</i> 12	12
	<i>Roger L. Dismore</i> DEPUTY DIRECTOR OF HIGHWAYS, REGION FOUR ENGINEER	
	STATE OF ILLINOIS DEPARTMENT OF TRANSPORTATION	

PRINTED BY THE AUTHORITY
OF THE STATE OF ILLINOIS

COMPUTER FILE NO. PROJECT 09029
09029-sht-cover.dgn 6/29/09 - MDS

