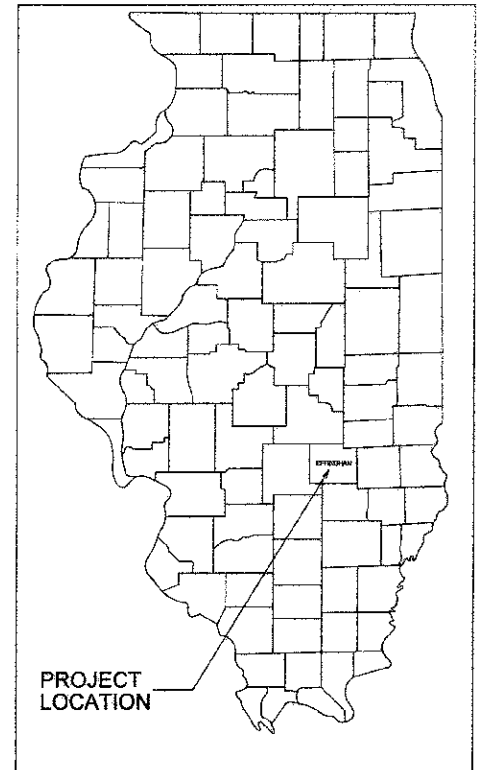


ROUTE	SECTION	COUNTY	TOTAL SHEETS	SHEET NO.
T.R. 283	10-15110-00-BR	EFFINGHAM	15	1
CONTRACT NO. 95665		ILLINOIS	PROJECT BROS-0049(159)	

STATE OF ILLINOIS
DEPARTMENT OF TRANSPORTATION
DIVISION OF HIGHWAYS
**PLANS FOR PROPOSED
HIGHWAY BRIDGE PROGRAM**
SECTION 10-15110-00-BR EFFINGHAM COUNTY
PROJECT BROS-0049(159)
JOB NO. C-97-001-12
WEST ROAD DISTRICT
T.R. 283



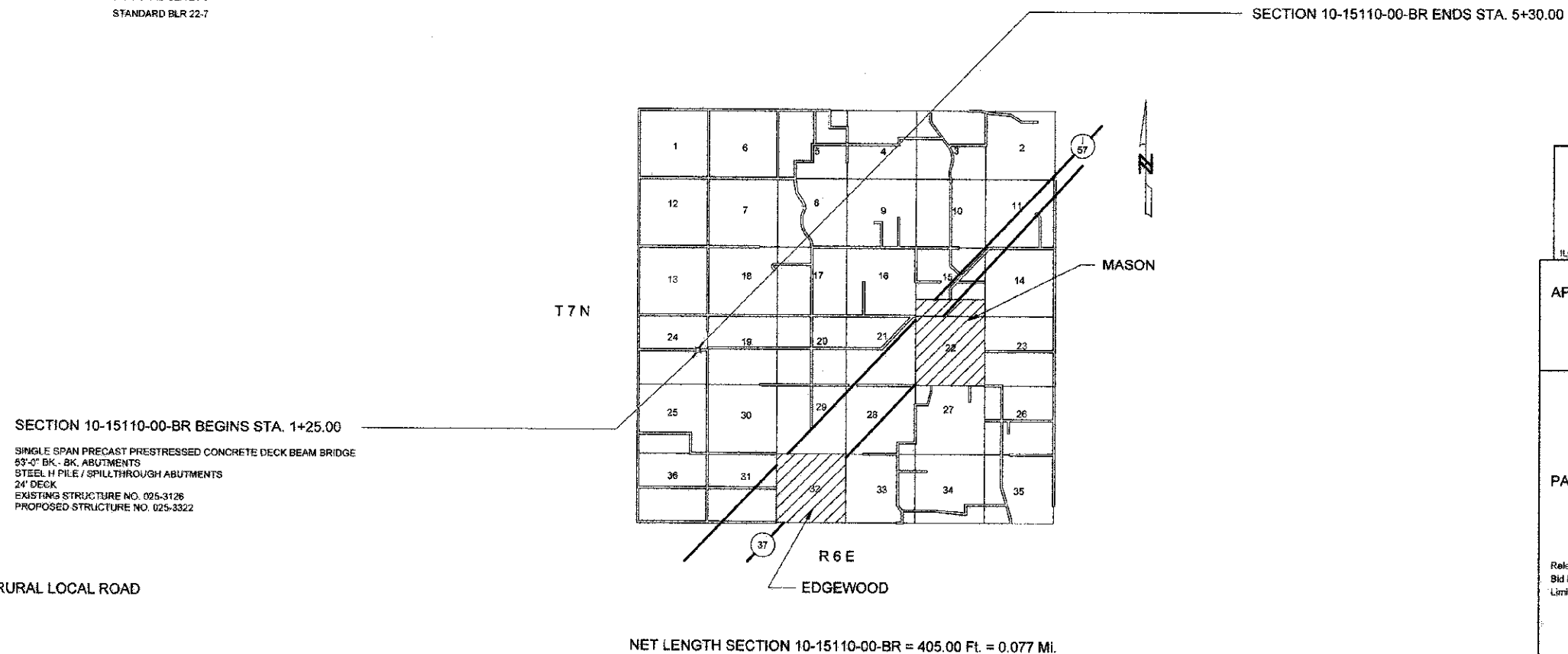
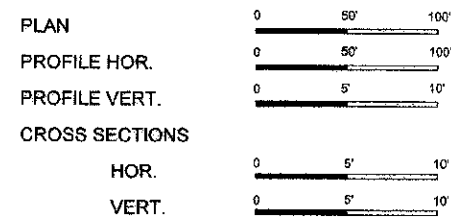
CONTRACT NO. 95665
Joint Utility Locating Information for Excavators
JULIE 1-800-892-0123

INDEX OF SHEETS

SHEET	ITEM
1	COVER SHEET
2	SUMMARY OF QUANTITIES
3	ROADWAY PLAN AND PROFILE
4	EROSION CONTROL PLAN
5	GENERAL PLAN AND ELEVATION
6	SUPERSTRUCTURE
7	SUPERSTRUCTURE DETAILS
8	STEEL RAILING, TYPE S-1
9	WEST ABUTMENT DETAILS
10	EAST ABUTMENT DETAILS
11	PILE DETAILS
12	BORING LOGS
13-15	CROSS SECTIONS

STANDARD DRAWINGS

- STANDARD 000001-06
- STANDARD 280001-06
- STANDARD 515001-03
- STANDARD 701901-02
- STANDARD BLR 21-9
- STANDARD BLR 22-7



Robert A. Charleston
Ch. Engr. Exp. 11/30/12
Exp. 11/30/12

REGISTERED PROFESSIONAL ENGINEER OF ILLINOIS

CHARLESTON ENGINEERING, INC.
CONSULTING ENGINEERS
105 NORTH KITCHELL
P.O. BOX 397
OLNEY, ILLINOIS 62450
(618) 392-0735
ILLINOIS DEPARTMENT OF PROFESSIONAL REGULATION REGISTRATION #184.000513

APPROVED *May 16* 20 *12*
 COUNTY ENGINEER

STATE OF ILLINOIS
DEPARTMENT OF TRANSPORTATION

PASSED *6/6 2012*
Maurice L. ...
 DISTRICT SEVEN ENGINEER OF LOCAL ROADS AND STREETS

Releasing For Bid Based on Limited Review *6/6 2012*
Robert A. Charleston
 DEPUTY DIRECTOR OF HIGHWAYS
 REGION FOUR ENGINEER