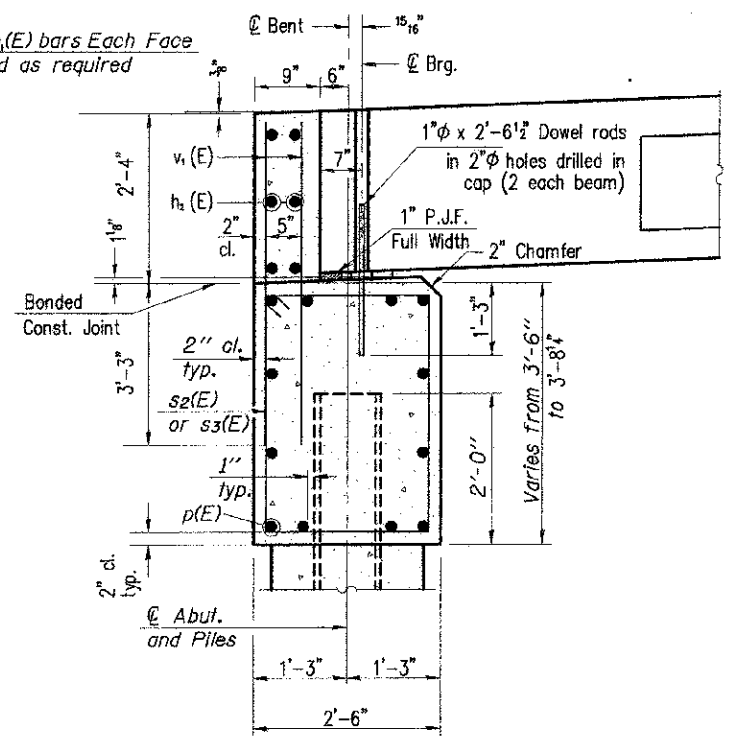
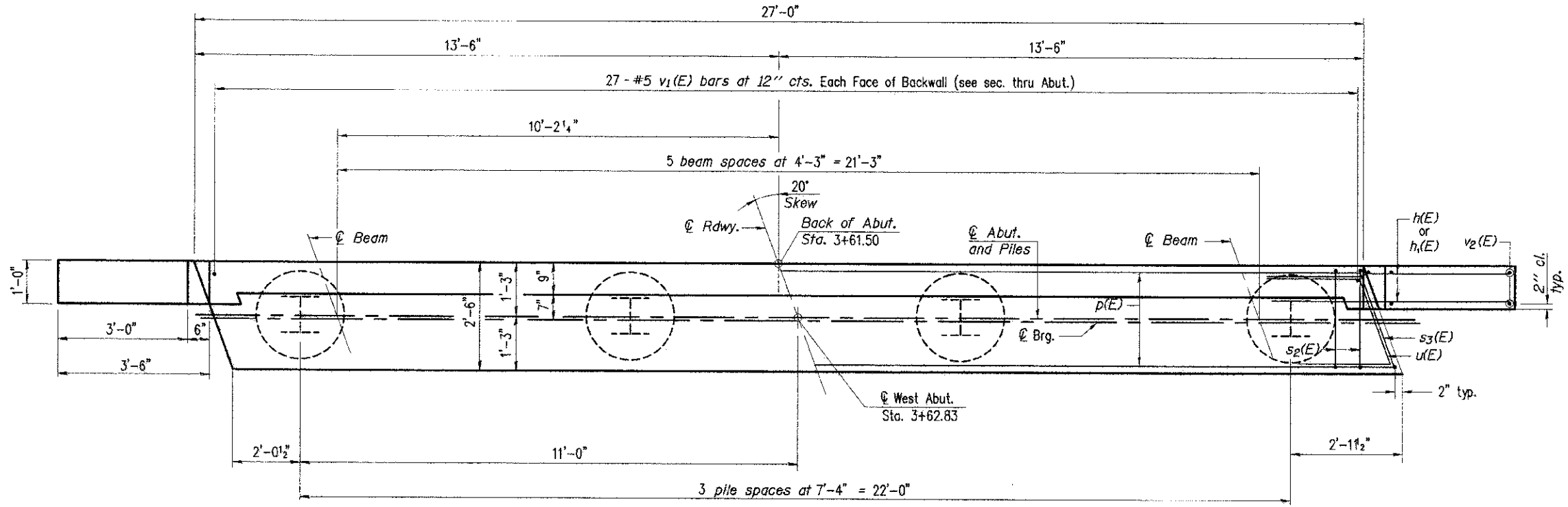


ELEVATION



SEC. THRU ABUT.
(At Right Angles)



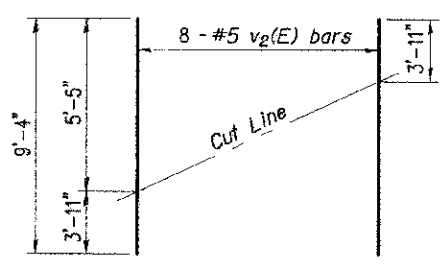
PLAN
(Looking West)

BILL OF MATERIAL

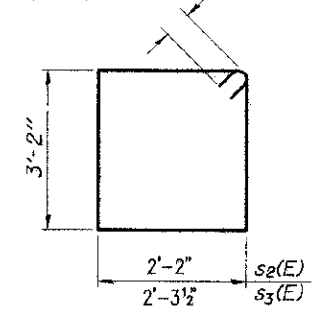
Bar	No.	Size	Length	Shape
h(E)	20	#4	5'-0"	—
h1(E)	12	#4	5'-3"	—
h2(E)	6	#4	26'-8"	—
p(E)	12	#7	26'-8"	—
s2(E)	30	#4	11'-5"	□
s3(E)	2	#4	11'-8"	□
u(E)	10	#6	11'-3"	┌
v1(E)	54	#5	5'-5"	—
v2(E)	8	#5	9'-4"	—
Concrete Structures		Cu. Yd.	12.3	
Reinforcement Bars, Epoxy Coated		Pound	1670	
Furnishing Steel Piles HP 10 X 42		Foot	135	
Driving Piles		Foot	135	
Test Pile, HP 10 X 42		Each	1	
Concrete Encasement		Cu. Yd.	1.4	

For details of piles see sheet 11 of 15.

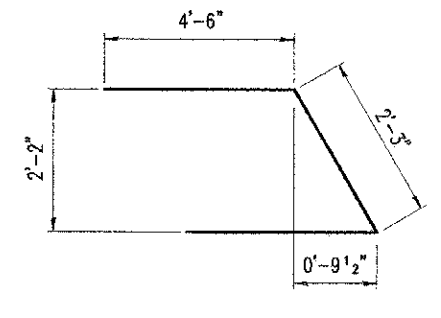
PILE DATA
 Type: HP 10 X 42
 Nominal Required Bearing: 334 kips
 Factored Resistance Available: 184 kips
 Est. Length: 45 Feet
 No. Production Piles: 3
 No. Test Piles: 1



FIELD CUTTING DIAGRAM
Order v2(E) full length. Cut as shown and use remainder of bars in opposite face.



BARS s2(E) & s3(E)



BAR u(E)

- Notes:
1. The Backwall and the portion of the Wingwalls above the bonded construction joint shall be cast against the in-place beam.
 2. Space reinforcement in cap to miss anchor bolts.
 3. The test pile shall be driven to 110 percent of the Nominal Required Bearing indicated in the pile data information.

CHARLESTON ENGINEERING, INC.
 CONSULTING ENGINEERS
 105 NORTH MITCHELL
 P.O. BOX 397
 COLLEVILLE, ILLINOIS 62450
 (618) 392-0736
ILLINOIS DEPARTMENT OF PROFESSIONAL REGULATION REGISTRATION #184-063518

WEST ABUTMENT DETAILS
STRUCTURE NO. 025-3322
T.R. 283
OVER LIMESTONE CREEK

SECTION 10-15110-00-BR
EFFINGHAM COUNTY
STATION 3+93.00