

EXISTING STRUCTURE: SINGLE SPAN BRIDGE WITH CONCRETE DECK ON STEEL BEAMS ON CLOSED CONCRETE ABUTMENTS. TO BE REMOVED. 22' L. x 15' W. NO SKEW. NO SALVAGE.

EARTHWORK SCHEDULE

LOCATION	EARTH EXCAVATION CU. YD.	EARTH EXCAVATION ADJUSTED FOR SHRINKAGE* CU. YD.	EMBANKMENT CU. YD.	EARTHWORK BALANCE** WASTE (+) OR SHORTAGE (-) CU. YD.
STA. 6+95.00 TO STA. 9+77.77	141	106	284	-178
STA. 10+28.11 TO STA. 13+30.00	74	56	408	-352
TOTAL	215	162	692	-530

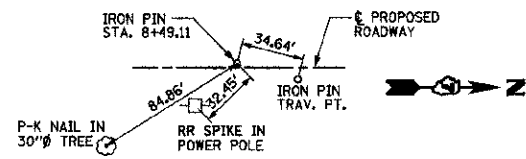
*25% SHRINKAGE
**FURNISHED EXCAVATION

TREE REMOVAL (6 TO 15 UNITS DIAMETER)

LOCATION	UNIT
27.8' LT., STA. 9+81.0	12
19.8' RT., STA. 10+19.4 (STUMP)	12
19.5' LT., STA. 10+34.7	15
TOTAL	39

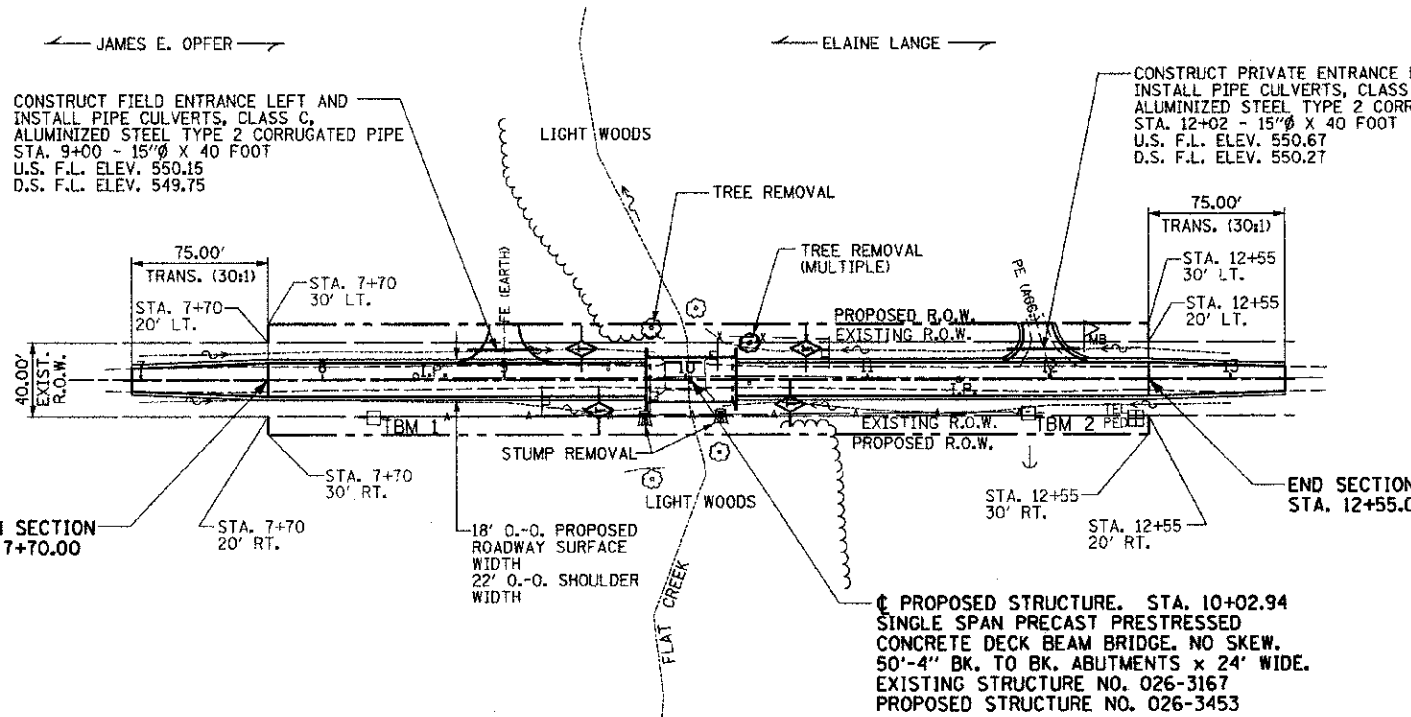
TREE REMOVAL (OVER 15 UNITS DIAMETER)

LOCATION	UNIT
21.7' RT., STA. 9+77.9 (STUMP)	18
19.9' LT., STA. 10+35.7	18
TOTAL	36

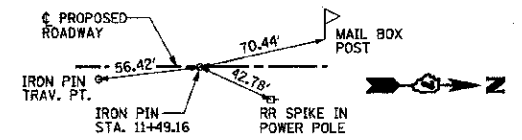
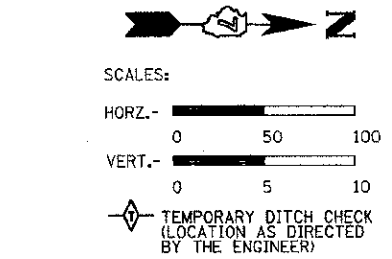


LINE TIES

2.10' LT., STA. 8+51.35

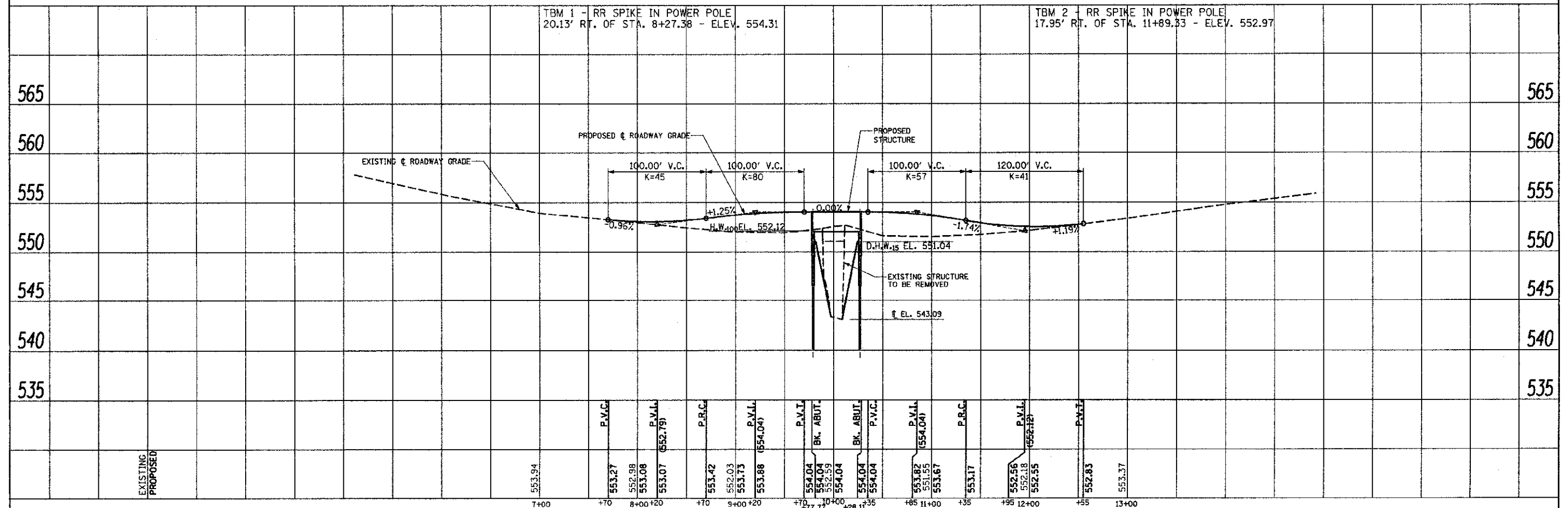


THE EXISTING RIGHT OF WAY SHOWN HEREON HAS BEEN PROTRACTED FROM EXISTING RECORDS AND IS TO BE USED FOR REFERENCE PURPOSES ONLY. FURTHERMORE, NO COMPLETE SURVEY OF SAID R.O.W. IS IMPLIED BY THIS DRAWING.



LINE TIES

0.22' RT., STA. 11+50.40



<p>RHUTASEL and ASSOCIATES, INC. CONSULTING ENGINEERS • LAND SURVEYORS CENTRALIA, ILLINOIS FREEBURG, ILLINOIS ILLINOIS DESIGN FIRM LICENSE NO. 184-000287</p>	DESIGNED - BLT	REVISED -	STATE OF ILLINOIS DEPARTMENT OF TRANSPORTATION	PLAN AND PROFILE OF ROADWAY STRUCTURE NO. 026-3453	ROUTE	SECTION	COUNTY	TOTAL SHEETS	SHEET NO.
	DRAWN - JN	REVISED -			TR 352	10-20128-00-BR	FAYETTE	10	3
	CHECKED - GLH	REVISED -			CONTRACT NO. 95692				
	DATE - 05/18/2012	REVISED -			RAAF JOB NO. 61011 ILLINOIS FED. AID PROJECT				

DATE	
BY	
REVISION	
NO. 1	
NO. 2	
NO. 3	
NO. 4	
NO. 5	
NO. 6	
NO. 7	
NO. 8	
NO. 9	
NO. 10	
NO. 11	
NO. 12	
NO. 13	
NO. 14	
NO. 15	
NO. 16	
NO. 17	
NO. 18	
NO. 19	
NO. 20	
NO. 21	
NO. 22	
NO. 23	
NO. 24	
NO. 25	
NO. 26	
NO. 27	
NO. 28	
NO. 29	
NO. 30	
NO. 31	
NO. 32	
NO. 33	
NO. 34	
NO. 35	
NO. 36	
NO. 37	
NO. 38	
NO. 39	
NO. 40	
NO. 41	
NO. 42	
NO. 43	
NO. 44	
NO. 45	
NO. 46	
NO. 47	
NO. 48	
NO. 49	
NO. 50	
NO. 51	
NO. 52	
NO. 53	
NO. 54	
NO. 55	
NO. 56	
NO. 57	
NO. 58	
NO. 59	
NO. 60	
NO. 61	
NO. 62	
NO. 63	
NO. 64	
NO. 65	
NO. 66	
NO. 67	
NO. 68	
NO. 69	
NO. 70	
NO. 71	
NO. 72	
NO. 73	
NO. 74	
NO. 75	
NO. 76	
NO. 77	
NO. 78	
NO. 79	
NO. 80	
NO. 81	
NO. 82	
NO. 83	
NO. 84	
NO. 85	
NO. 86	
NO. 87	
NO. 88	
NO. 89	
NO. 90	
NO. 91	
NO. 92	
NO. 93	
NO. 94	
NO. 95	
NO. 96	
NO. 97	
NO. 98	
NO. 99	
NO. 100	

DATE	
BY	
REVISION	
NO. 1	
NO. 2	
NO. 3	
NO. 4	
NO. 5	
NO. 6	
NO. 7	
NO. 8	
NO. 9	
NO. 10	
NO. 11	
NO. 12	
NO. 13	
NO. 14	
NO. 15	
NO. 16	
NO. 17	
NO. 18	
NO. 19	
NO. 20	
NO. 21	
NO. 22	
NO. 23	
NO. 24	
NO. 25	
NO. 26	
NO. 27	
NO. 28	
NO. 29	
NO. 30	
NO. 31	
NO. 32	
NO. 33	
NO. 34	
NO. 35	
NO. 36	
NO. 37	
NO. 38	
NO. 39	
NO. 40	
NO. 41	
NO. 42	
NO. 43	
NO. 44	
NO. 45	
NO. 46	
NO. 47	
NO. 48	
NO. 49	
NO. 50	
NO. 51	
NO. 52	
NO. 53	
NO. 54	
NO. 55	
NO. 56	
NO. 57	
NO. 58	
NO. 59	
NO. 60	
NO. 61	
NO. 62	
NO. 63	
NO. 64	
NO. 65	
NO. 66	
NO. 67	
NO. 68	
NO. 69	
NO. 70	
NO. 71	
NO. 72	
NO. 73	
NO. 74	
NO. 75	
NO. 76	
NO. 77	
NO. 78	
NO. 79	
NO. 80	
NO. 81	
NO. 82	
NO. 83	
NO. 84	
NO. 85	
NO. 86	
NO. 87	
NO. 88	
NO. 89	
NO. 90	
NO. 91	
NO. 92	
NO. 93	
NO. 94	
NO. 95	
NO. 96	
NO. 97	
NO. 98	
NO. 99	
NO. 100	