

STATE OF ILLINOIS

DEPARTMENT OF TRANSPORTATION

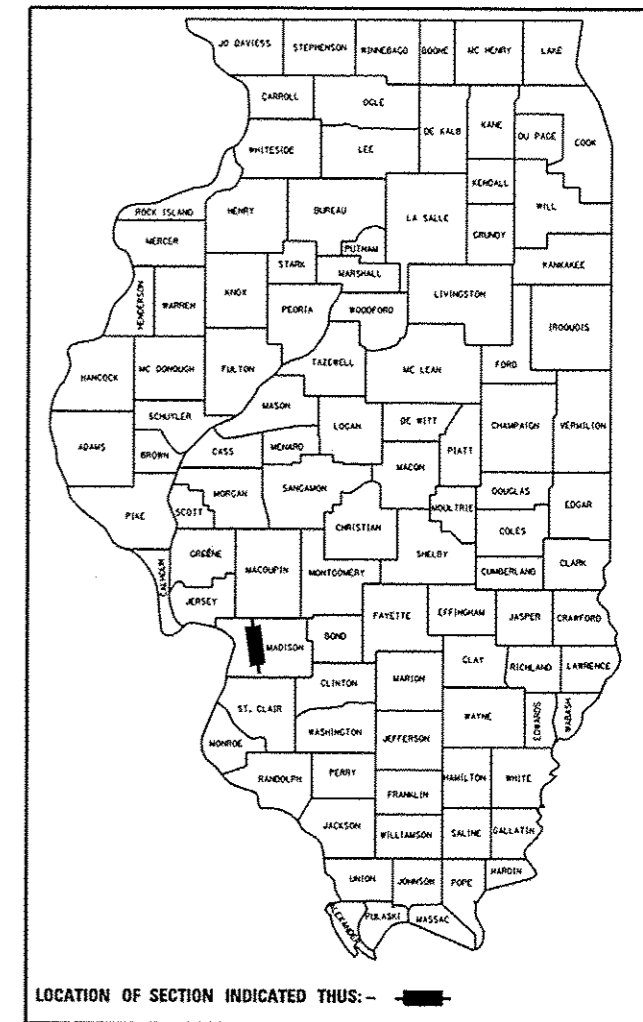
PLANS FOR PROPOSED MORRIS BIKE TRAIL

SOUTHERN ILLINOIS UNIVERSITY EDWARDSVILLE
 SECTION: 10-00006-01-BT
 MADISON COUNTY
 PROJECT: TE-00D8 (183)
 JOB NO.: C-98-328-11

F.A. RTE.	SECTION	COUNTY	TOTAL SHEETS	SHEET NO.
	10-00006-01-BT	MADISON	33	1
FEDERAL AID PROJECT	ILLINOIS	CONTRACT NO. 97499		

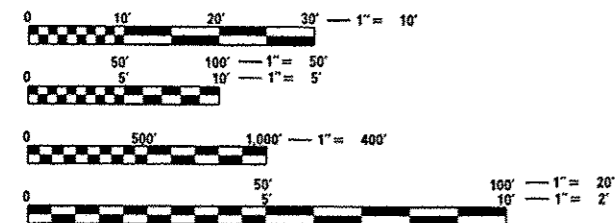
INDEX OF SHEETS

SHEET NO.	ITEM
1	COVER SHEET
2	GENERAL NOTES
3-5	SUMMARY OF QUANTITIES
6	TYPICAL SECTIONS
7-8	SCHEDULES
9-11	PLAN & PROFILE SHEETS
12	PLAN & PROFILE SHEET - CONNECTOR TRAIL
13	TRAFFIC CONTROL PLAN
14-16	EROSION & SEDIMENT CONTROL SHEETS
17-18	PAVEMENT MARKING & SIGNING PLAN
19	TRAFFIC SIGNAL PLAN
20	INTERSECTION & CORNER ISLAND DETAILS
21-23	CONSTRUCTION DETAILS
24-31	CROSS SECTIONS - MORRIS TRAIL
32-33	CROSS SECTIONS - CONNECTOR TRAIL



HIGHWAY STANDARDS

000001-06	STANDARD SYMBOLS, ABBREVIATIONS AND PATTERNS
280001-06	TEMPORARY EROSION CONTROL SYSTEMS
424031	MEDIAN PEDESTRIAN CROSSINGS
542301-03	PRECAST REINFORCED CONCRETE FLARED END SECTION
542401-01	METAL END SECTIONS FOR PIPE CULVERTS
602401-03	MANHOLE TYPE A
602601-02	PRECAST REINFORCED CONCRETE FLAT SLAB TOP
604001-03	FRAME AND LIDS TYPE 1
606201-02	TYPE B GUTTER (INLET, OUTLET & ENTRANCE)
606301-04	PC CONCRETE ISLANDS AND MEDIANS
701101-02	OFF-RD OPERATIONS, MULTILANE, 15' (4.5 m) TO 24' (600 mm) FROM PAVEMENT EDGE
701106-02	OFF-RD OPERATIONS, MULTILANE, MORE THAN 15' (4.5 m) AWAY
701701-08	URBAN LANE CLOSURE, MULTILANE INTERSECTION
701901-02	TRAFFIC CONTROL DEVICES
720001-01	SIGN PANEL MOUNTING DETAILS
720006-03	SIGN PANEL ERECTION DETAILS
780001-03	TYPICAL PAVEMENT MARKINGS
782001	PRISMATIC CURB REFLECTORS
814001-02	HANDHOLES
873001-02	TRAFFIC SIGNAL GROUNDING & BONDING
BLR21-9	TYPICAL APPLICATION OF TRAFFIC CONTROL DEVICES FOR CONSTRUCTION ON RURAL LOCAL HIGHWAYS



FULL SIZE PLANS HAVE BEEN PREPARED USING STANDARD ENGINEERING SCALES. REDUCED SIZED PLANS WILL NOT CONFORM TO STANDARD SCALES. IN MAKING MEASUREMENTS ON REDUCED PLANS, THE ABOVE SCALES MAY BE USED.

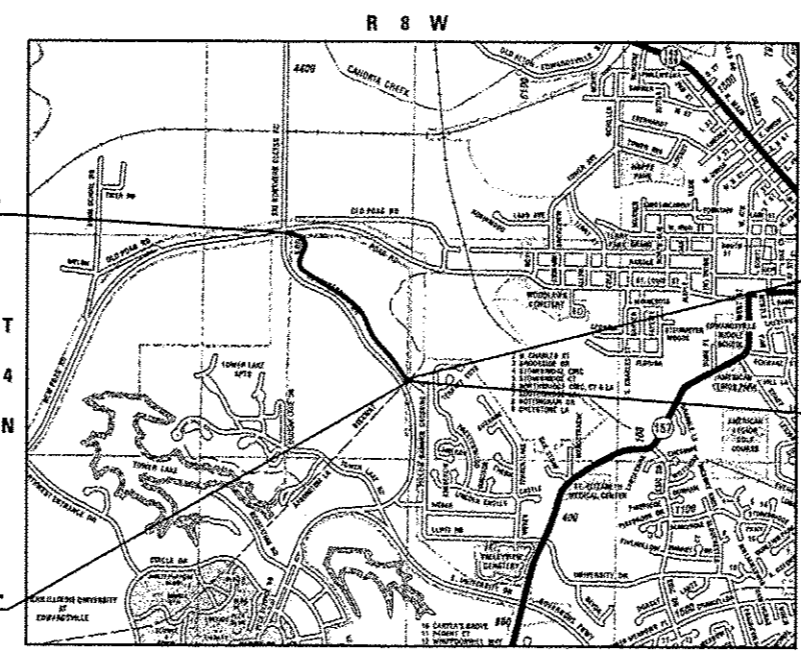
J.U.L.I.E.
 JOINT UTILITY LOCATION INFORMATION FOR EXCAVATION
 1-800-892-0123
 OR 811

END MORRIS TRAIL
 STA. 46 + 97.28

BEGIN MORRIS TRAIL
 STA. 10 + 02.07

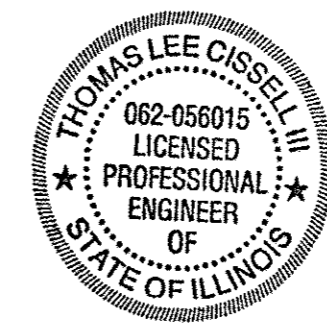
BEGIN CONNECTOR TRAIL
 STA. 100 + 00.00

END CONNECTOR TRAIL
 STA. 100 + 80.00



LOCATION MAP
 SCALE 1" = 2,000'

MORRIS TRAIL LENGTH = 3,695.21 FT. = 0.700 MILE
 CONNECTOR TRAIL LENGTH = 80.00 FT. = 0.015 MILE
 NET LENGTH = 3,775.21 FT. = 0.715 MILE



Tom L. Cissell, P.E.
 License Expires 11/30/2013
 Date 5/29/12

STATE OF ILLINOIS
 DEPARTMENT OF TRANSPORTATION
 DIVISION OF HIGHWAYS

APPROVED: 5/25/12
 Kenneth Neher, Vice Chancellor of Administration

PASSED: 6-8-12
 District & Project Implementation Engineer

RELEASING FOR BID
 BASED ON LIMITED
 REVIEW: 6-8-12
 Deputy Director of Highways, Region 5 Engineer



ILLINOIS
 Eastport Business Center 1
 100 Lanter Court, Suite 1
 Collinsville, IL 62234
 tel 618.345.2200
 fax 618.345.7233

MISSOURI
 Laclede Gas Building
 720 Olive, Suite 1660
 St. Louis, MO 63101
 tel 314.588.8381
 fax 314.588.9605

www.oatesassociates.com

PRINTED BY THE AUTHORITY
 OF THE STATE OF ILLINOIS