

ELECTRICAL GENERAL NOTES

1. PRIOR TO COMMENCING CONSTRUCTION OF ANY COMPONENT OF THE PROPOSED TRAFFIC SIGNAL SYSTEM, ALL UNDERGROUND UTILITIES SHALL BE FIELD LOCATED ACCORDING TO ARTICLE 107.31 OF THE "STANDARD SPECIFICATIONS FOR ROAD AND BRIDGE CONSTRUCTION". AGENCIES KNOWN TO HAVE FACILITIES WITHIN THE PROJECT LIMITS ARE LISTED IN THE GENERAL NOTES OF THE PLANS. CALL J.U.L.I.E. (800) 892-0123 ONE WEEK BEFORE PLANNING TO DIG. IT MAY BE NECESSARY TO HAND DIG TEST HOLES TO EXPOSE EXISTING UTILITIES AT SOME LOCATIONS.
2. TRAFFIC SIGNAL CABLES SHALL BE #14 AWG STRANDED COPPER UNLESS OTHERWISE SPECIFIED. TERMINAL ENDS SHALL HAVE CRIMPED-ON RING TONGUE CONNECTORS.
3. THE QUANTITIES SHOWN FOR TRAFFIC SIGNAL CABLE IN CONDUIT AND REMOVAL OF ELECTRIC CABLE FROM CONDUIT ASSUME THAT ALL CABLE IN EXISTING CONDUIT WILL NEED TO BE REPLACED. IF IT IS DETERMINED IN THE FIELD THAT THIS CABLE IS SUITABLE FOR USE AND IT WILL NOT BE DAMAGED WHILE PULLING ADDITIONAL CABLE THROUGH THE CONDUIT, WORK ON THESE ITEMS WILL BE UNNECESSARY.
4. PROPOSED CONDUIT SHALL BE PVC UNLESS NOTED OTHERWISE. ALL CONDUIT SHALL BE PLACED AND BACKFILLED PRIOR TO CONSTRUCTION OF PROPOSED IMPROVEMENTS. NO ADDITIONAL COMPENSATION WILL BE ALLOWED FOR PUSHING OR PULLING CONDUIT AFTER SUCH WORK HAS BEEN COMPLETED.
5. A 1/4" DIAMETER NYLON PULL ROPE SHALL BE INSTALLED IN ALL CONDUITS.
6. HANDHOLES SHALL BE CAST-IN-PLACE PORTLAND CEMENT CONCRETE ACCORDING TO ARTICLE 814.03(B) OF THE "STANDARD SPECIFICATIONS FOR ROAD AND BRIDGE CONSTRUCTION". HANDHOLE COVERS SHALL BE SLOPED TO MATCH PROPOSED CONTOURS.
7. SEE SPECIAL PROVISIONS FOR TRAFFIC CONTROL AND CONSTRUCTION STAGING REQUIREMENTS.

TRAFFIC SIGNAL LEGEND

- ◁▷ EXISTING SIGNAL HEAD WITH BACKPLATE
- PROPOSED HANDHOLE
- EXISTING HANDHOLE
- PROPOSED CONDUIT: SIZE SPECIFIED
- - - EXISTING CONDUIT: SIZE SPECIFIED
- PVCC POLYVINYL CHLORIDE CONDUIT
- GSC GALVANIZED STEEL CONDUIT
- REC REMOVE ELECTRIC CABLE FROM CONDUIT
- ⊃ EXISTING MAST ARM
- ⊠ EXISTING CONTROLLER
- ⊕ EXISTING SIGNAL POST

STANDARDS FOR TRAFFIC SIGNAL SHEETS

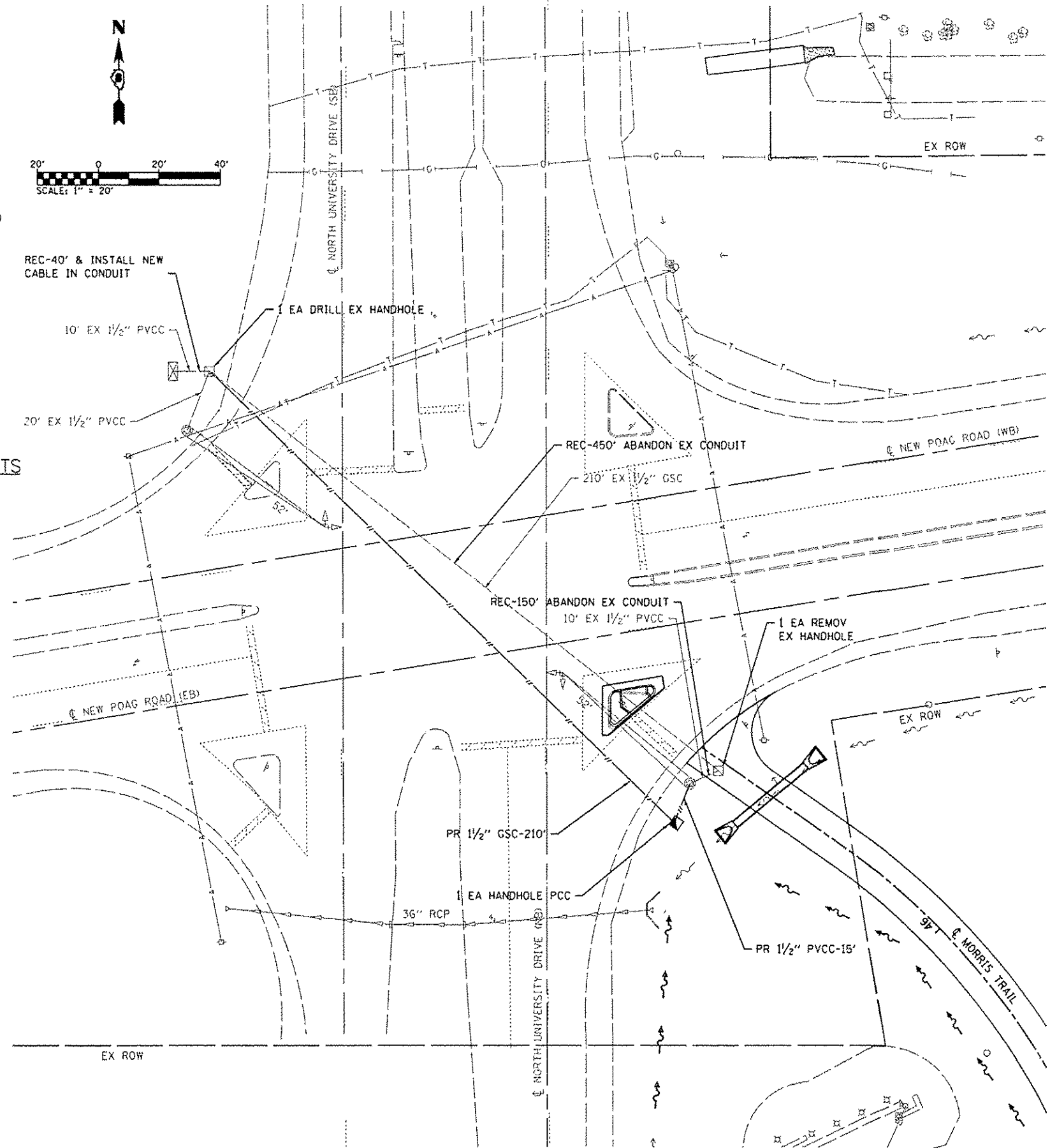
- 814001 HANDHOLES
- 873001 TRAFFIC SIGNAL GROUNDING & BONDING

TRAFFIC SIGNAL SCHEDULE

CODE NO.	ITEM	UNIT	TOTAL QUANTITIES
81028190	UNDERGROUND CONDUIT, GALVANIZED STEEL, 1 1/2" DIA.	FOOT	210
81028340	UNDERGROUND CONDUIT, PVC, 1 1/2" DIA.	FOOT	15
81400700	HANDHOLE, PORTLAND CEMENT CONCRETE	EACH	1
87301215	ELECTRIC CABLE IN CONDUIT, SIGNAL NO. 14 2C	FOOT	650
87900200	DRILL EXISTING HANDHOLE	EACH	1
89502300	REMOVE ELECTRIC CABLE FROM CONDUIT	FOOT	640
89502380	REMOVE EXISTING HANDHOLE	EACH	1

NOTES:

S SEE PROJECT SPECIFIC SPECIAL PROVISIONS



PROPOSED TRAFFIC SIGNAL PLAN