

SUMMARY OF QUANTITIES				
ITEM	DESCRIPTION	UNIT	ESTIMATED QUANTITY	RECORD QUANTITY
AR 152410	UNCLASSIFIED EXCAVATION	C.Y.	36,360	0
AR 156510	SILT FENCE	L.F.	320	0
AR 156511	DITCH CHECK	EACH	14	0
AR 156544	RIPRAP - GRADATION NO. 4	S.Y.	6	0
AR 162815	CLASS E GATE, 15'	EACH	1	0
AR 705546	6" NON-PERFORATED UNDERDRAIN	L.F.	330	0
AR 705548	8" NON-PERFORATED UNDERDRAIN	L.F.	770	0
AR 80130R	FROSTION CONTROL BLANKET	S.Y.	6,780	0
AR 901510	SEEDING	ACRE	21.43	0
AR 908510	MULCHING	ACRE	20.05	0

THE CITY OF MORRIS, ILLINOIS

MORRIS MUNICIPAL AIRPORT

JAMES R. WASHBURN FIELD

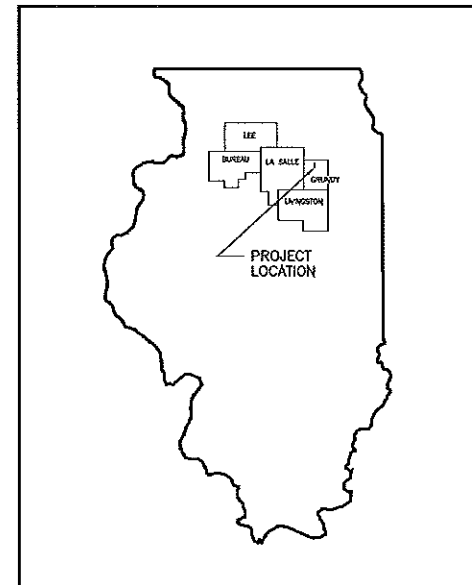
CONSTRUCTION PLANS
FOR
DRAINAGE IMPROVEMENTS
ILLINOIS PROJECT NO. C09-4090
A.I.P. PROJECT NO. 3-17-0071-B17

LATITUDE 41°-25'-31.8" LONGITUDE 88°-25'-7.2"
ELEVATION 585.01

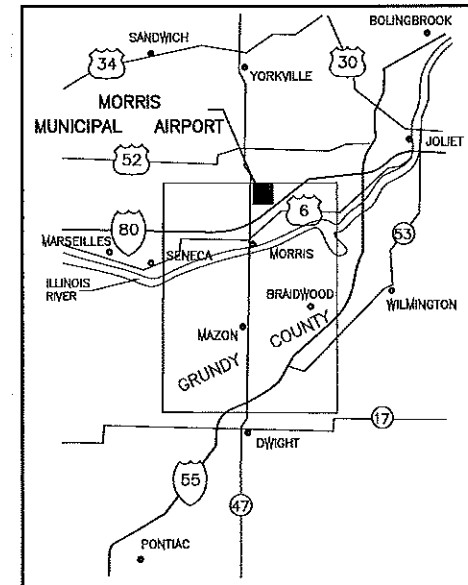
DATE: JUNE 19, 2012
RUNWAY CATEGORY B, GROUP II

INDEX OF SHEETS

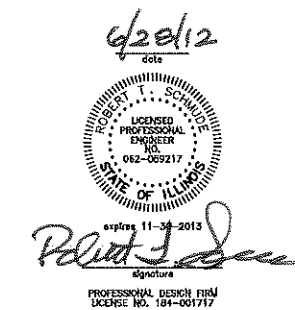
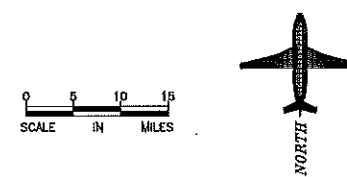
PAGE NO.	DESCRIPTION
1	COVER SHEET
2	CONSTRUCTION SAFETY PLAN
3	DRAINAGE IMPROVEMENTS
4	DETAILS



LOCATION MAP
NOT TO SCALE



VICINITY MAP



BENCHMARK DATA		
DESCRIPTION	ELEVATION METRIC	ELEVATION ENGLISH
S.E. CORNER OF CONCRETE BASE FOR OLD WIND SOCK AT OFFICE BLDG.	179.558	(589.10)
BRASS PLUG IN WEST WALL @ GRACE LUTH. CHURCH	179.783	(589.84)

DESCRIPTION
MORRIS MUNICIPAL AIRPORT
SECTIONS 10 & 15, TOWNSHIP 34N., RANGE 7E. OF 3RD P.M. GRUNDY COUNTY, SARATOGA TOWNSHIP

UNDERGROUND UTILITY INFORMATION		
UTILITY SERVICE	PERSON TO CONTACT	TELEPHONE NO.
ELECTRIC - COMMONWEALTH EDISON	JULIE (JOINT UTILITY LOCATING INFORMATION FOR EXCAVATORS)	1-800-892-0123
TELEPHONE - AT&T	JULIE (JOINT UTILITY LOCATING INFORMATION FOR EXCAVATORS)	1-800-892-0123
NATURAL GAS - NICOR	JULIE (JOINT UTILITY LOCATING INFORMATION FOR EXCAVATORS)	1-800-892-0123

CITY OF MORRIS

APPROVED: *Robert Schmupe* MAYOR
DATE: 6-29 2012

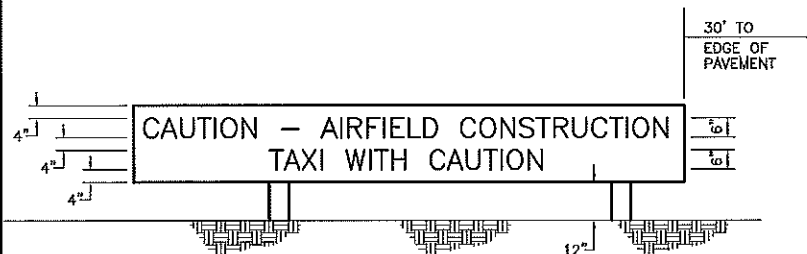
APPROVED: *John D. Engler* CITY CLERK
DATE: 6-29 2012

CHAMLIN ASSOCIATES
PERU ILLINOIS MORRIS

SUBMITTED BY: *Robert Schmupe* ENGINEER
DATE: 6/28/12 2012

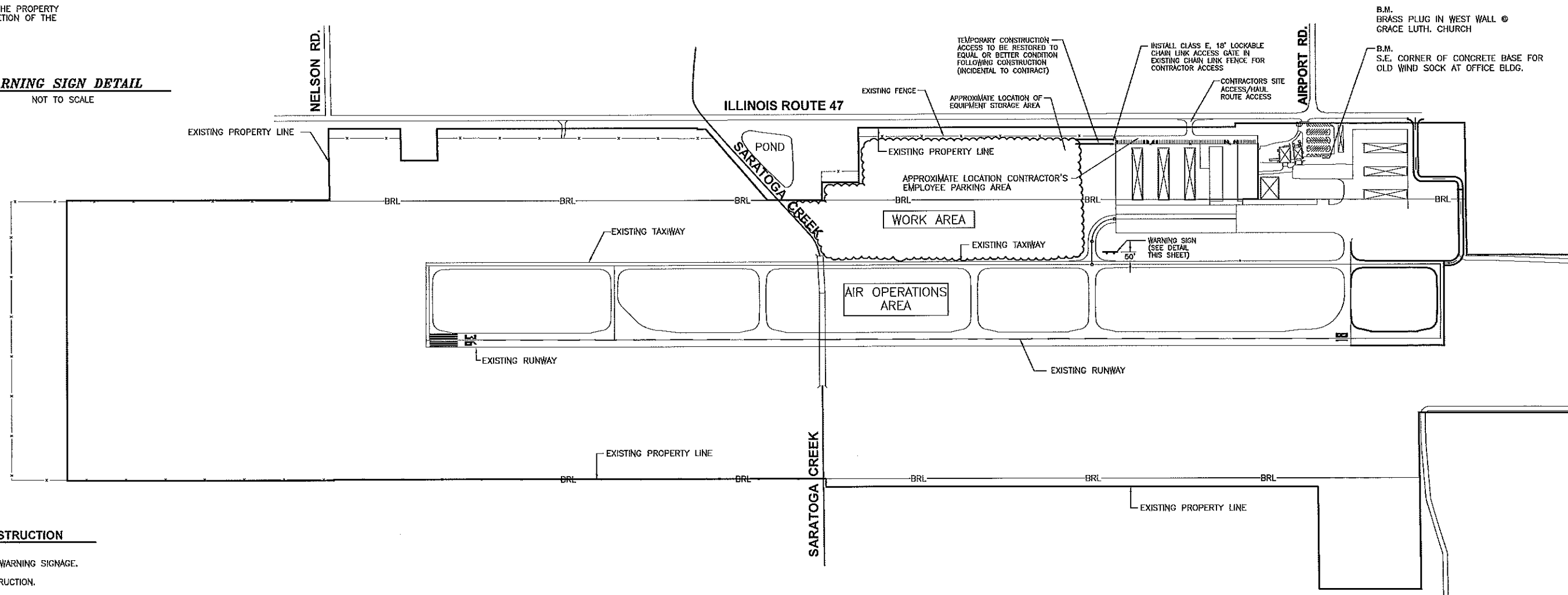
JOB NO. 1002.76
PROFESSIONAL DESIGN FIRM LICENSE NO.: 184-001717

CHAMLIN & ASSOCIATES, INC. © 2008
Drawing Name: H:\A003\11002-23\IMPROVEMENT PLANS\BASE.dwg, Last Modified: Jun 20, 2012 12:19pm, Plotted on: Jun 28, 2012 2:59pm by roberta



- NOTE:
- 1.) SIGN COST INCIDENTAL TO CONTRACT
 - 2.) WARNING SIGN SHALL REMAIN THE PROPERTY OF THE AIRPORT UPON COMPLETION OF THE PROJECT
 - 3.) BACKGROUND - ORANGE
LETTERS - BLACK

WARNING SIGN DETAIL
NOT TO SCALE



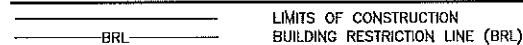
SEQUENCE OF CONSTRUCTION

1. PUT UP CONSTRUCTION WARNING SIGNAGE.
2. STAKE LIMITS OF CONSTRUCTION.
3. INSTALL CLASS E, 18' LOCKABLE CHAIN LINK ACCESS GATE IN EXISTING CHAIN LINK FENCE.
4. CONSTRUCT STORMWATER CONTROLS IN ACCORDANCE WITH EROSION CONTROL PLAN.
5. NOTIFY AIRPORT MANAGER, JEFF VOGEN, WHENEVER CONSTRUCTION ACTIVITY WILL OCCUR WITHIN 50 FEET OF TAXIWAY.
6. STRIP TOPSOIL AND PLACE IN TEMPORARY TOPSOIL STOCKPILE.
7. CONSTRUCT EMBANKMENT AND PERFORM EXCAVATION TO THE LINES AND GRADES OF THE PLANS MAKING ALLOWANCE FOR 6" TOPSOIL RESPREAD.
8. CONSTRUCT STORM DRAINAGE AND RIP-RAP AT OUTFALL.
9. RESPREAD TOPSOIL AT 6" MINIMUM.
10. APPLY FERTILIZER, SEEDING, MULCHING AND EROSION CONTROL BLANKET.
11. INSTALL TEMPORARY DITCH CHECKS.
12. RESTORE TEMPORARY CONSTRUCTION ACCESS ROUTE AREA.
13. CLEAN PREMISES.
14. REMOVE CONSTRUCTION WARNING SIGN AND NOTIFY AIRPORT MANAGER, JEFF VOGEN.
15. REMOVE TEMPORARY EROSION CONTROL MEASURES ONCE GRASS IS ESTABLISHED.

GENERAL NOTES AND SCOPE OF WORK

- 1.) SCOPE OF WORK: THIS PROJECT CONSISTS OF REGRADING APPROXIMATELY 20 ACRES SOUTH OF THE EXISTING HANGARS AND WEST OF THE EXISTING TAXIWAY, INCLUDING ALL NECESSARY EARTHWORK, GRADING, DRAINAGE, EROSION CONTROL AND FENCING.
- 2.) THE MAXIMUM ANTICIPATED CONSTRUCTION EQUIPMENT HEIGHT IS 30'-0".
- 3.) THE CONTRACTOR SHALL USE THE DESIGNATED ACCESS ROAD AS SHOWN ON THIS SHEET. THE CONTRACTOR SHALL MAINTAIN THE PROPOSED ACCESS ROAD THROUGHOUT THE COURSE OF THE PROJECT. AT THE CONCLUSION OF THE PROJECT, ANY AREAS DAMAGED OUTSIDE THE AREAS SHOWN FOR CONSTRUCTION SHALL BE REPAIRED BY THE CONTRACTOR AT HIS OWN EXPENSE. RESTORATION OF THE ACCESS ROAD WILL BE CONSIDERED INCIDENTAL TO THE PROJECT.
- 4.) THE CONTRACTOR SHALL INVESTIGATE EXISTING DRAINAGE PIPES AND DRAIN TILES TO DETERMINE THEIR EXTENT. ALL FIELD TILES AND DRAIN PIPES SHALL BE EXTENDED, REROUTED, OR MAINTAINED TO PROVIDE CONTINUOUS UNOBSTRUCTED DRAINAGE.
- 5.) PUMPING GROUND WATER AND/OR STORM WATER FROM THE WORK AREA IS CONSIDERED INCIDENTAL TO THE PROJECT.
- 6.) DUE TO THE CLOSE PROXIMITY TO AIRCRAFT OPERATIONS, THE CONTRACTOR IS REQUIRED TO STRICTLY ADHERE TO THE GUIDELINES REGARDING CONSTRUCTION SAFETY AS SET FORTH IN FAA ADVISORY CIRCULAR 150/5370-2E

LEGEND



SAFETY PLAN NOTES

- 1.) THE SEQUENCE OF CONSTRUCTION SHOWN ON THIS SHEET IS INTENDED TO ALLOW ORDERLY AND SAFE CONSTRUCTION, AND TO AVOID LENGTHY TAXIWAY CLOSINGS.
- 2.) BARRICADES SHALL BE PLACED AND MAINTAINED AS SHOWN HEREIN, AS INDICATED IN THE SPECIAL PROVISIONS AND AS DIRECTED BY THE ENGINEER. PLACEMENT AND MAINTENANCE OF BARRICADES ARE INCIDENTAL TO CONTRACT.
- 3.) THE CONTRACTOR SHALL BE RESPONSIBLE FOR FURNISHING AND INSTALLING CLOSED TAXIWAY MARKERS AS SHOWN ON THIS SHEET AND AS DIRECTED BY THE AIRPORT MANAGER AND THE ENGINEER. MARKERS SHALL BE PLACED AND REMOVED WHEN SO DIRECTED BY THE OWNER THROUGH THE ENGINEER. THE OWNER SHALL BE RESPONSIBLE FOR NOTIFYING THE FLIGHT SERVICE STATION REGARDING RUNWAY CLOSURE.
- 4.) ALL BARRICADES, MARKINGS, LATHE, FLAGGING, AND TRAFFIC CONTROL ITEMS ARE INCIDENTAL TO THE CONTRACT.
- 5.) ALL IDOT TYPE III BARRICADES SHALL HAVE FOUR STANDARD SIZE SAND BAGS PER LEG.

POINT OF CONTACT

AIRPORT MANAGER:
JEFF VOGEN
MORRIS MUNICIPAL AIRPORT
9980 N. RTE. 47
MORRIS, IL 60450
(815) 942-1600

CHAMLIN & ASSOCIATES, INC. © 2009
Drawing Number: 25-1402-11-022-85-IMP/PROPOSED PLANS BASE.dwg
Last Modified: Jul 03, 2012 - 10:00am
Plotted on: Jul 03, 2012 - 10:35am
By: rsharts

REVISIONS				
LEVEL	BY	DATE	DESCRIPTION	
1	RGP	6/19/12	AS PER IDA COMMENTS	
DRAWN BY: RGP				
CHECKED BY: RTS				
CREATED: 5/25/12				

CHAMLIN & ASSOCIATES
PERU MORRIS ILLINOIS

MORRIS MUNICIPAL AIRPORT
MORRIS, ILLINOIS

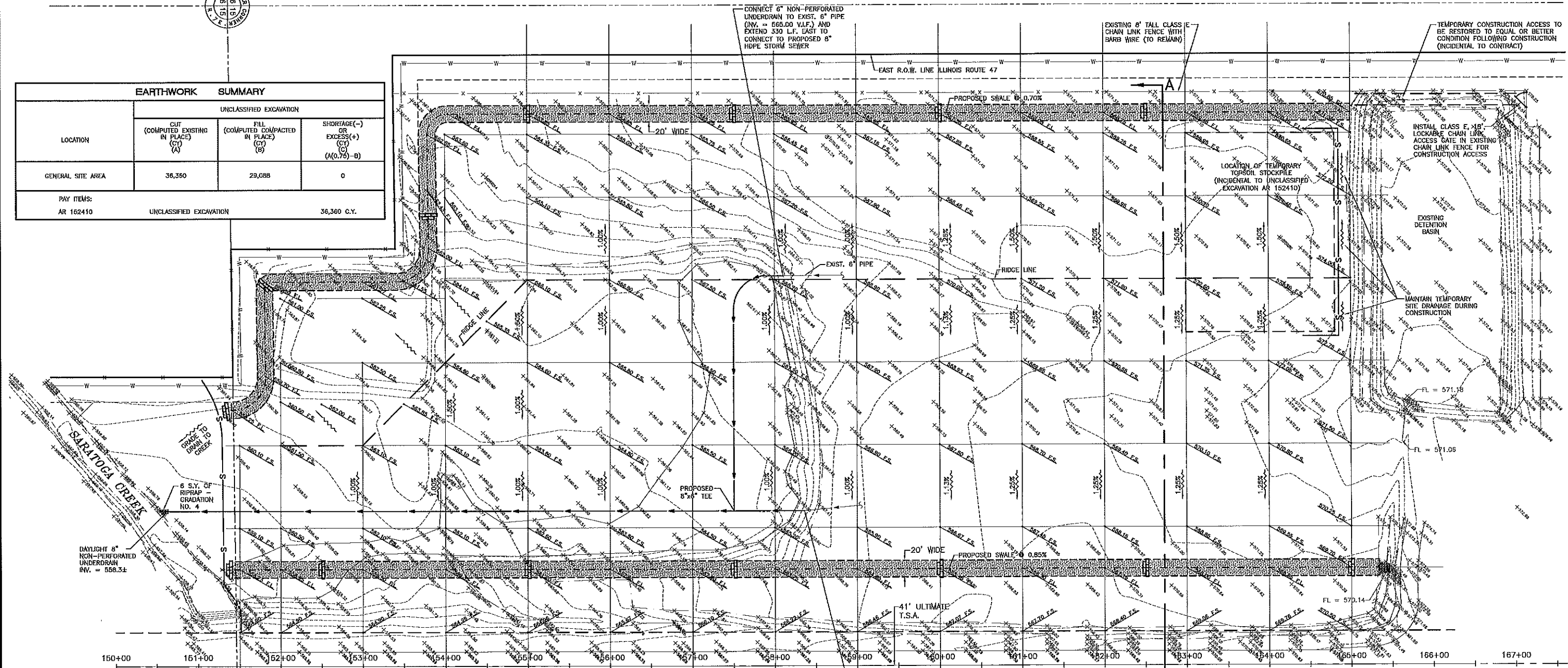
CONSTRUCTION SAFETY PLAN

APPROVED
FOR CONSTRUCTION

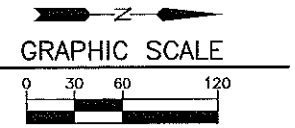
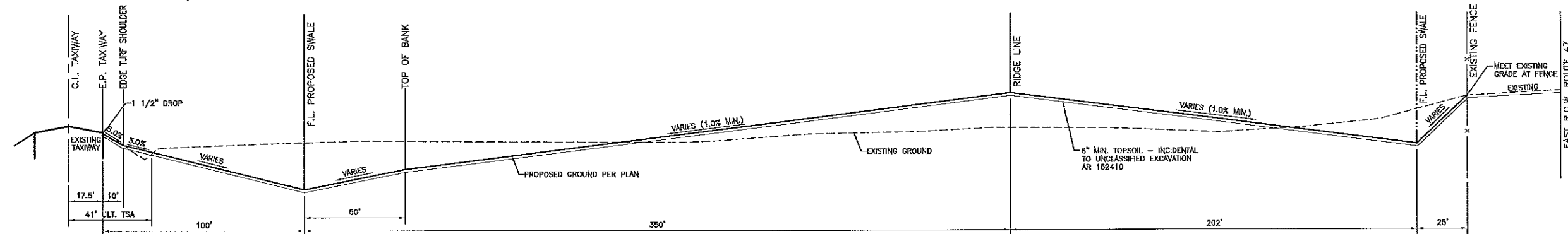
CURRENT AS OF: 07/03/12	
SCALE: 1" = 300'	SHEET 2
FILE NO.: 13117	OF 4



EARTHWORK SUMMARY			
LOCATION	UNCLASSIFIED EXCAVATION		
	CUT (COMPUTED EXISTING IN PLACE) (A)	FILL (COMPUTED COMPACTED IN PLACE) (B)	SHORTAGE(-) OR EXCESS(+) (C) (A(0.75)-B)
GENERAL SITE AREA	36,350	29,088	0
PAY ITEMS:			
AR 162410	UNCLASSIFIED EXCAVATION		36,360 C.Y.



CONNECT 8" NON-PERFORATED UNDERDRAIN TO EXIST. 8" PIPE (INV. = 564.09) AND EXTEND 770 L.F. SOUTH TO THE SARATOGA CREEK @ 0.75%



LEGEND

	SILT FENCE
	DITCH CHECK
	RIPRAP - GRADATION NO. 4
	EROSION CONTROL BLANKET

CHAMLIN & ASSOCIATES, INC. © 2009. Drawing Name: H:\A\081\11002-85\IMPROVEMENT PLANS\BASE.dwg. Last Modified: Jul 03, 2012 - 10:00am. Plotted on: Jul 03, 2012 - 10:41am by roberts

DRAWN BY: MAB	REVISIONS			
CHECKED BY: RTS	LEVEL	BY	DATE	DESCRIPTION
CREATED: 2/26/11	1	RGF	6/19/12	AS PER IDA COMMENTS

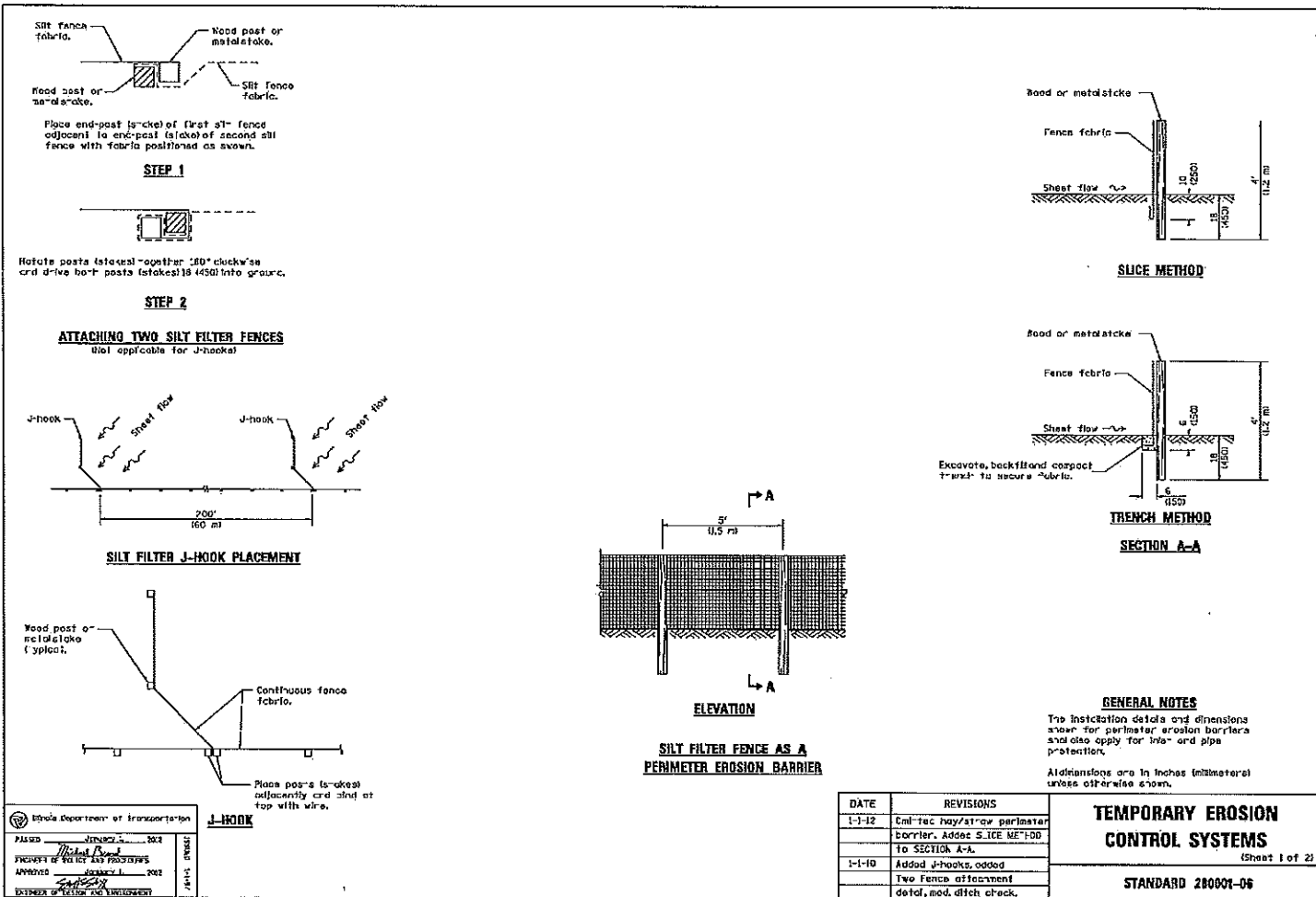
CHAMLIN & ASSOCIATES
PERU MORRIS
ILLINOIS

MORRIS MUNICIPAL AIRPORT
MORRIS, ILLINOIS

**DRAINAGE IMPROVEMENT
AND EROSION CONTROL PLAN**

**APPROVED
FOR CONSTRUCTION**

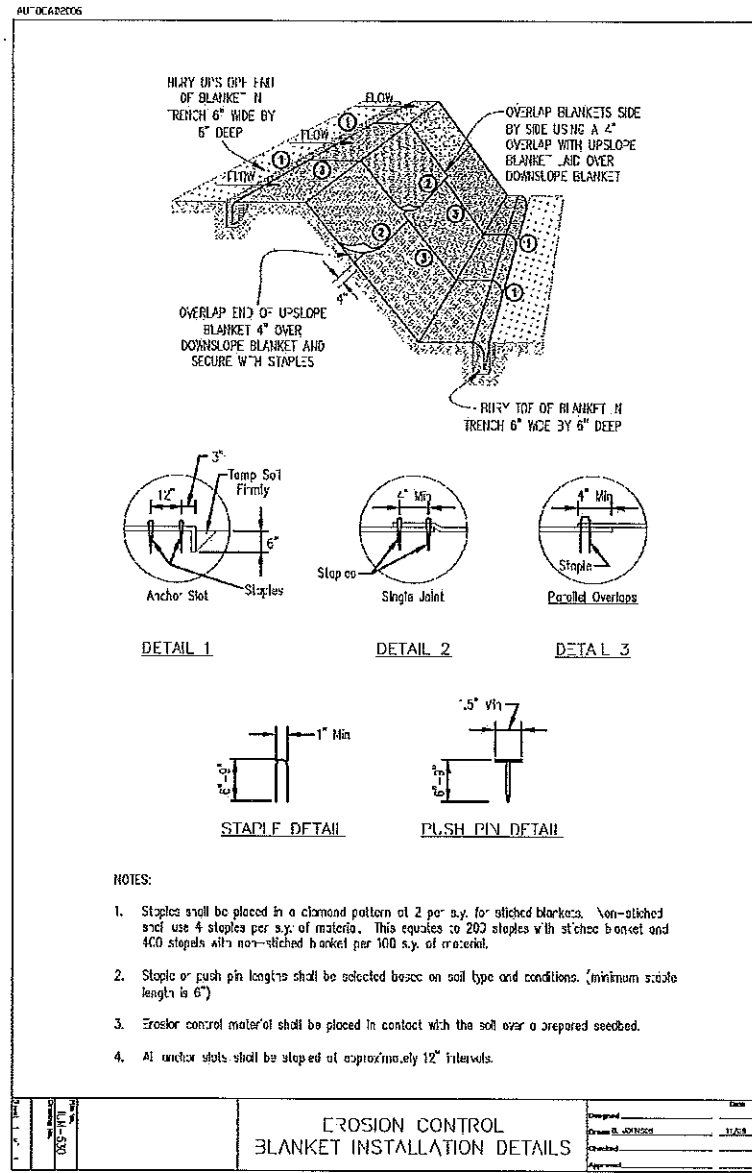
CURRENT AS OF: 07/03/12	SHEET 3
SCALE: 1" = 60'	OF 4
FILE NO.: 13117	



DESIGNED BY	DATE
CHECKED BY	DATE
APPROVED BY	DATE

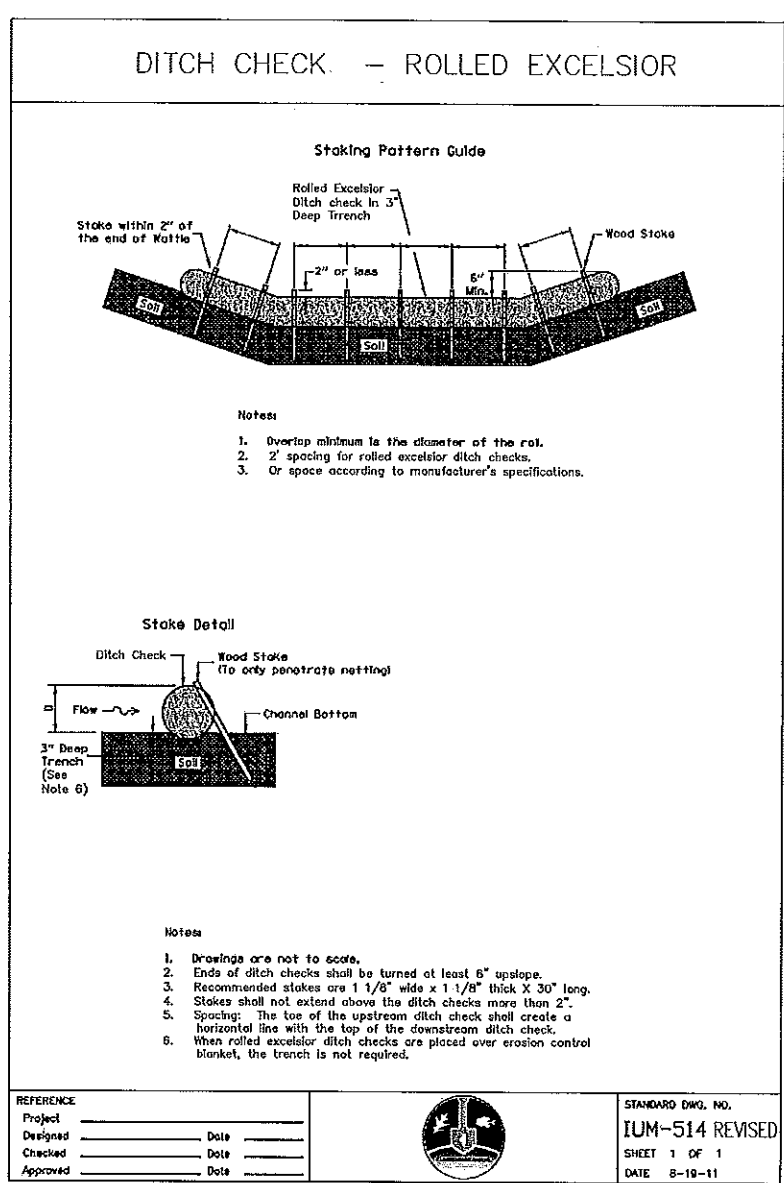
DATE	REVISIONS
1-1-12	Entire layout/section perimeter barrier. Added SLICE METHOD to SECTION A-A.
1-1-10	Added J-hooks, added two fence attachment detail, mod. ditch check.

TEMPORARY EROSION CONTROL SYSTEMS
STANDARD 280001-06
(Sheet 1 of 2)



DESIGNED BY	DATE
CHECKED BY	DATE
APPROVED BY	DATE

EROSION CONTROL BLANKET INSTALLATION DETAILS



DESIGNED BY	DATE
CHECKED BY	DATE
APPROVED BY	DATE

REFERENCE

Project _____ Date _____
Designed _____ Date _____
Checked _____ Date _____
Approved _____ Date _____

STANDARD DWG. NO.
IUM-514 REVISED
SHEET 1 OF 1
DATE 8-19-11

CHAMBLIN & ASSOCIATES, INC. © 2012
Drawing Name: H:\AUGUST\11202-SKY IMPROVEMENT PLANS\BASE.dwg, Last Modified: Jun 19, 2012 - 12:28pm, Plotted on: Jun 19, 2012 - 12:28pm by rcp

DRAWN BY: RCP	LEVEL	BY	DATE	REVISIONS	DESCRIPTION
CHECKED BY: RTS	1	RCP	6/19/12	AS PER IDA COMMENTS	
CREATED: 5/25/12					

CHAMBLIN & ASSOCIATES
PERU MORRIS
ILLINOIS

MORRIS MUNICIPAL AIRPORT
MORRIS, ILLINOIS

DETAILS

APPROVED FOR CONSTRUCTION

CURRENT AS OF: 06/19/12
SCALE: NONE
FILE NO.: 13117

SHEET 4 OF 4