

## GENERAL NOTES

- ALL CONSTRUCTION SHALL BE PERFORMED IN ACCORDANCE WITH THE ILLINOIS DEPARTMENT OF TRANSPORTATION "STANDARD SPECIFICATIONS FOR ROAD AND BRIDGE CONSTRUCTION", ADOPTED APRIL 1, 2016 (HEREINAFTER REFERRED TO AS THE STANDARD SPECIFICATIONS); THE "SUPPLEMENTAL SPECIFICATIONS AND RECURRING SPECIAL PROVISIONS", IN EFFECT ON THE DATE OF THE INVITATION OF BIDS; THE LATEST EDITION OF THE "ILLINOIS MANUAL ON UNIFORM TRAFFIC CONTROL DEVICES FOR STREETS, THE "DETAILS" ON THE PLANS AND THE "SPECIAL PROVISIONS" INCLUDED IN THE CONTRACT DOCUMENTS. ANY REFERENCE TO STANDARDS THROUGHOUT THE PLANS OR SPECIAL PROVISIONS SHALL BE INTERPRETED AS THE LATEST STANDARD OF THE ILLINOIS DEPARTMENT OF TRANSPORTATION.
- THE CONTRACTOR SHALL NOTIFY THE ENGINEER, VILLAGE CONTACT AT 630-719-2941 AND V3 COMPANIES AT 630-724-9200 AT LEAST 72 HOURS IN ADVANCE OF BEGINNING WORK AND SHALL COORDINATE ALL CONSTRUCTION OPERATIONS WITH THE ENGINEER. ATTENTION IS CALLED TO SECTION 701 OF THE STANDARD SPECIFICATIONS AND THE SPECIAL PROVISIONS FOR TRAFFIC CONTROL AND PROTECTION. THE STORAGE OF EQUIPMENT AND/OR MATERIALS WITHIN THE RIGHT-OF-WAY OF ANY STREET AND/OR PARK PROPERTY SHALL REQUIRE PRIOR APPROVAL OF THE ENGINEER.
- THE CONTRACTOR SHALL FURNISH, ERECT, AND MAINTAIN ALL SIGNS, BARRICADES AND OTHER TRAFFIC CONTROL DEVICES, REQUIRED TO MAINTAIN TRAFFIC FLOW. PORTABLE/CHANGEABLE ELECTRONIC MESSAGE BOARDS SHALL BE USED IN ADVANCE OF THE PROJECT ACCORDING TO IDOT STANDARDS AND SHALL BE IN PLACE A MINIMUM OF 72 HOURS PRIOR TO COMMENCING THE WORK AND REMAIN THROUGHOUT THE ROADWAY CONSTRUCTION WORK.
- THE CONTRACTOR SHALL MAKE ALL FULL DEPTH SAW CUTS AT THE EDGE OF PAVEMENT ADJACENT TO THE REMOVAL OF ALL CONCRETE CURB OR COMBINATION CONCRETE CURB AND GUTTER. THE CONTRACTOR SHALL MAKE ALL FULL DEPTH SAW CUTS REQUIRED FOR THE HMA PAVEMENT PATCHING AND CONCRETE CURB AND GUTTERS AS SPECIFIED, OR AS DIRECTED BY THE ENGINEER.
- THE CONTRACTOR SHALL MAINTAIN THE SITE IN A CLEAN AND ORDERLY MANNER. DEBRIS AND ANY SURPLUS MATERIAL SHALL BE REMOVED AND RESTORATION SHALL PROCEED AS THE WORK PROCEEDS. IF THE ENGINEER SO DIRECTS, THE CONTRACTOR SHALL STOP ALL OTHER WORK AND CONCENTRATE ON CLEAN-UP AND RESTORATION. DEBRIS AND SURPLUS MATERIAL SHALL BE DISPOSED OF BY THE CONTRACTOR OFF-SITE. ANY DAMAGE CAUSED BY THE CONTRACTOR TO EXISTING PAVEMENT, CURB & GUTTER, OR SIDEWALK NOT SHOWN TO BE REMOVED OR WORKED ON DURING CONSTRUCTION SHALL BE REPAIRED OR REPLACED.
- THE CONTRACTOR SHALL CONFINE OPERATIONS WITHIN THE CONSTRUCTION LIMITS OF THE PROJECT. ANY DAMAGE CAUSED BY THE CONTRACTOR OUTSIDE OF SAID CONSTRUCTION LIMITS SHALL BE REPAIRED.
- DURING CONSTRUCTION, ALL SIGNS, BARRICADES AND TEMPORARY PAVEMENT MARKINGS WILL CONFORM TO THE MUTCD AND ILLINOIS MUTCD. VEHICULAR ACCESS TO LOCAL PROPERTIES WILL BE MAINTAINED AT ALL TIMES DURING CONSTRUCTION.
- THE MINIMUM THICKNESS OF THE PROPOSED GUTTER FLAG SHALL BE 10" UNLESS OTHERWISE STATED IN THE PLANS OR DIRECTED BY THE ENGINEER.
- PRIOR TO NEW WORK, IT SHALL BE THE CONTRACTOR'S RESPONSIBILITY TO FIELD CHECK ALL DIMENSIONS AND ELEVATIONS AND TO VERIFY THE LOCATION AND ELEVATION OF EXISTING UTILITY LINES AND STRUCTURES THAT MAY BE IMPACTED BY THE PROPOSED WORK PRIOR TO ORDERING MATERIAL OR BEGINNING CONSTRUCTION. ANY DISCREPANCIES FROM THE PLANS SHALL BE REPORTED TO THE ENGINEER IMMEDIATELY.
- ALL APPLICABLE PROVISIONS OF THE CURRENT OCCUPATIONAL SAFETY AND HEALTH ACT ARE HEREIN INCORPORATED BY REFERENCE.
- THE ENGINEER AND OWNER ARE NOT RESPONSIBLE FOR THE CONSTRUCTION MEANS, METHODS, TECHNIQUES, SEQUENCES OR PROCEDURES, TIME OF PERFORMANCE, PROGRAMS OR FOR ANY SAFETY PRECAUTIONS USED BY THE CONTRACTOR. THE CONTRACTOR IS SOLELY RESPONSIBLE FOR EXECUTION OF HIS/HER WORK IN ACCORDANCE WITH THE CONTRACT DOCUMENTS AND SPECIFICATIONS.
- THE CONTRACTOR IS RESPONSIBLE FOR HAVING A SET OF "APPROVED" ENGINEERING PLANS WITH THE LATEST REVISION DATE ON THE JOB SITE PRIOR TO THE START OF CONSTRUCTION AND AT ALL TIMES DURING CONSTRUCTION.

IDOT HIGHWAY STANDARDS	
000001-06	STANDARD SYMBOLS ABBREVIATION AND PATTERNS
442201-03	CLASS C AND D PATCHES
606001-07	CONCRETE CURB TYPE B AND COMBINATION CONCRETE CURB AND GUTTER
701006-05	OFF-ROAD OPERATIONS, 2L, 2W, 15' (4.5) TO 24" (600MM) FROM PAVEMENT EDGE
701101-05	OFF-ROAD OPERATIONS, MULTILANE, 15' (4.5M) TO 24" (600MM) FROM PAVEMENT EDGE
701201-04	LANE CLOSURE, 2L, 2W, DAY ONLY, FOR SPEEDS >= 45 MPH
701801-06	SIDEWALK, CORNER OR CROSSWALK CLOSURE
701901-07	TRAFFIC CONTROL DEVICES

IDOT DISTRICT 1 STANDARDS	
BD-24	CURB OR CURB AND GUTTER REMOVAL AND REPLACEMENT
BD-32	BUTT JOINT AND HMA TAPER
TC-13	DISTRICT ONE TYPICAL PAVEMENT MARKINGS

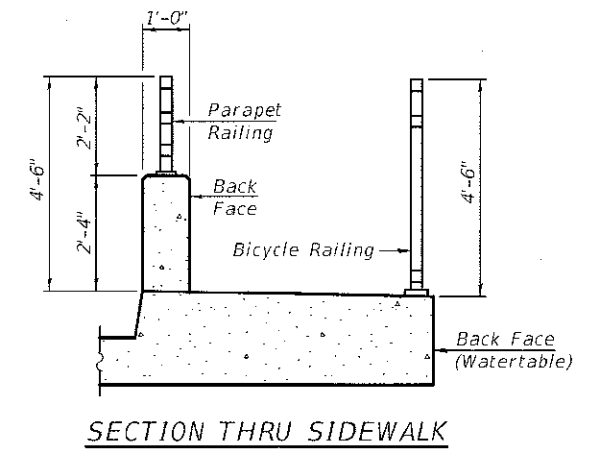
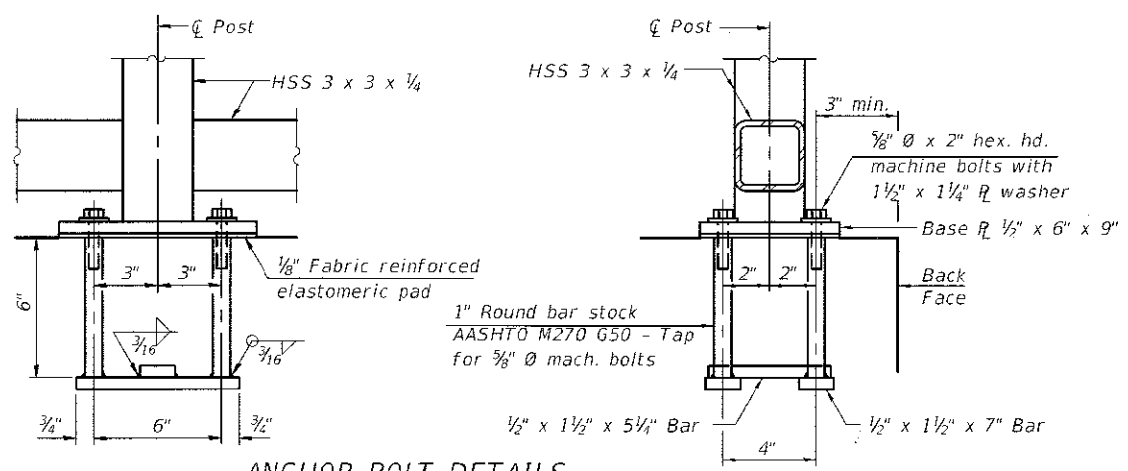
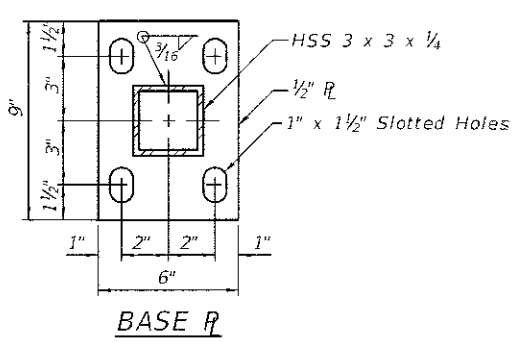
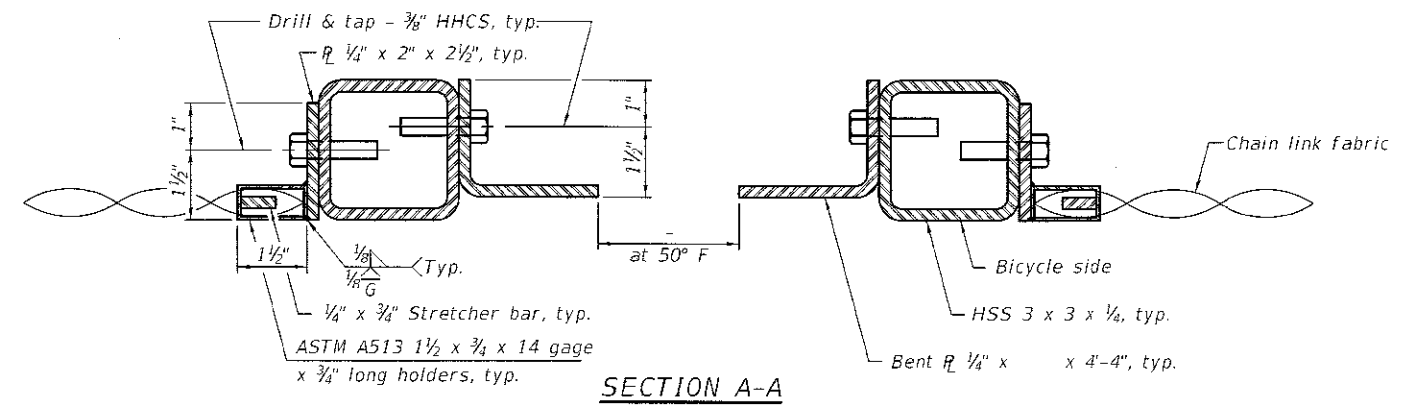
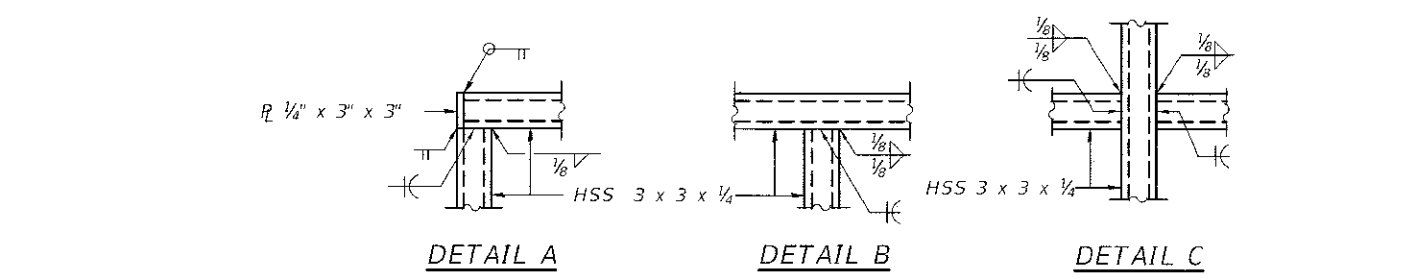
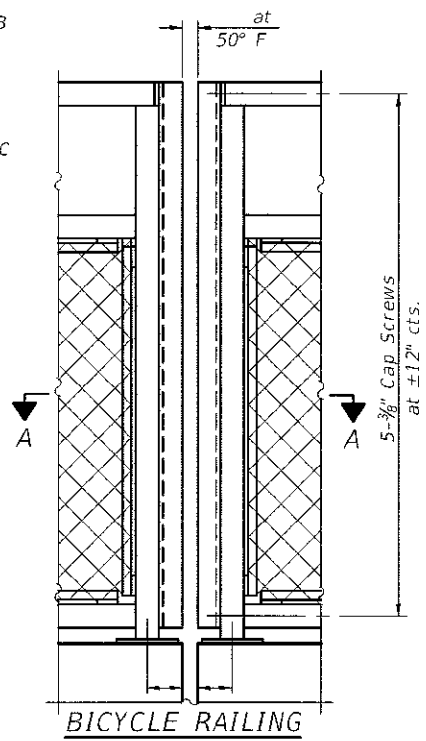
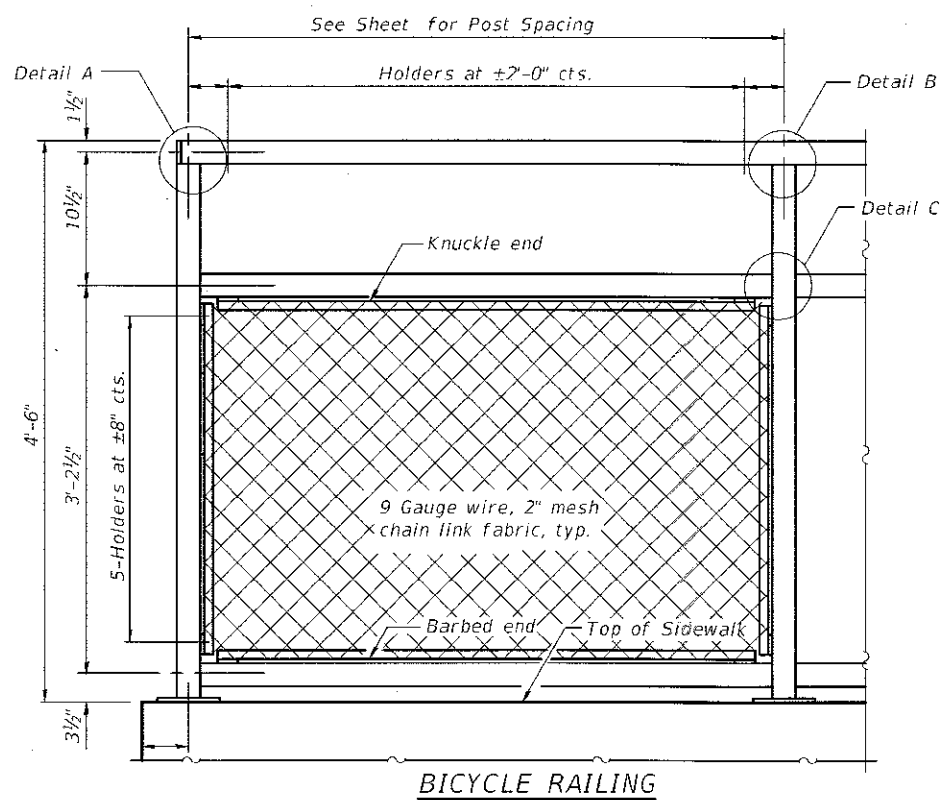
## COMMITMENTS

NO WORK SHALL COMMENCE PRIOR TO SEPTEMBER 1, 2018.

## INDEX OF SHEETS

- 1 TITLE SHEET
- 2 GENERAL NOTES
- 3 SUMMARY OF QUANTITIES
- 4 - 5 TYPICAL SECTIONS
- 6 ALIGNMENT, TIES, AND BENCHMARKS
- 7 71st STREET BRIDGE DETOUR PLAN
- 8 REMOVAL PLAN
- 9 ROADWAY PLAN AND PROFILE
- 10 PAVEMENT MARKING AND LANDSCAPING PLAN
- 11- 12 STRUCTURAL PLAN
- 13 STRUCTURAL DETAIL
- 14- 17 CONSTRUCTION DETAILS
- 17A BICYCLE RAILING

FILE NAME =	USER NAME = msloves	DESIGNED - GB	REVISED 7-25-18	<b>STATE OF ILLINOIS DEPARTMENT OF TRANSPORTATION</b>	<b>GENERAL NOTES</b>	F.A.U. RTE.	SECTION	COUNTY	TOTAL SHEETS	SHEET NO.
MSV2017\1717\Drawings\Main\CADD Sheets\0117171-shr-Gen01.dgn	DRAWN -	CHECKED - JDN	REVISED -			1533	17-00078-00-BR	DUPAGE	17	2
Default	PLOT SCALE = 2.0000' / in.	DATE -	REVISED -			CONTRACT NO. 61E85				
	PLOT DATE = 5/3/2018					SCALE:	SHEET 1 OF 1 SHEETS	STA.	TO STA.	[ILLINOIS] FED. AID PROJECT



**ANCHOR BOLT DETAILS**  
 In lieu of the cast-in-place anchor device shown, the Contractor has the option of drilling and setting 3/8" Ø anchor rods according to Article 509.06 of the Standard Specifications. Embedment shall be according to the manufacturer's specifications.

When railing is painted:  
 All post, railing, splices, anchor devices, and bent plates shall be painted flat black using the Organic Zinc-Rich Paint System.

8-11-2017 (10'-0" Maximum Post Spacing)

USER NAME =	DESIGNED -	REVISED $\Delta$ 07-23-2018
PLOT SCALE =	CHECKED -	REVISED -
PLOT DATE =	DRAWN -	REVISED -
	CHECKED -	REVISED -

STATE OF ILLINOIS  
 DEPARTMENT OF TRANSPORTATION

BICYCLE RAILING  
 STRUCTURE NO.

SHEET OF SHEETS

F.A.U. RTE.	SECTION	COUNTY	TOTAL SHEETS	SHEET NO.
1533	17-00078-00-BR	DUPAGE	17	17A
CONTRACT NO. 61E85				
ILLINOIS   FED. AID PROJECT				