

08-03-2018 LETTING ITEM 018

STATE OF ILLINOIS
DEPARTMENT OF TRANSPORTATION

PLANS FOR PROPOSED
FEDERAL AID HIGHWAY

F.A.I. ROUTE 80 (I-80)
EAST OF F.A.I. ROUTE 74 (I-74)
SECTION (37-2)M-1
PROJECT STP-02AA(309)
WEIGH-IN-MOTION DATA COLLECTION SYSTEM
HENRY COUNTY

C-92-014-18

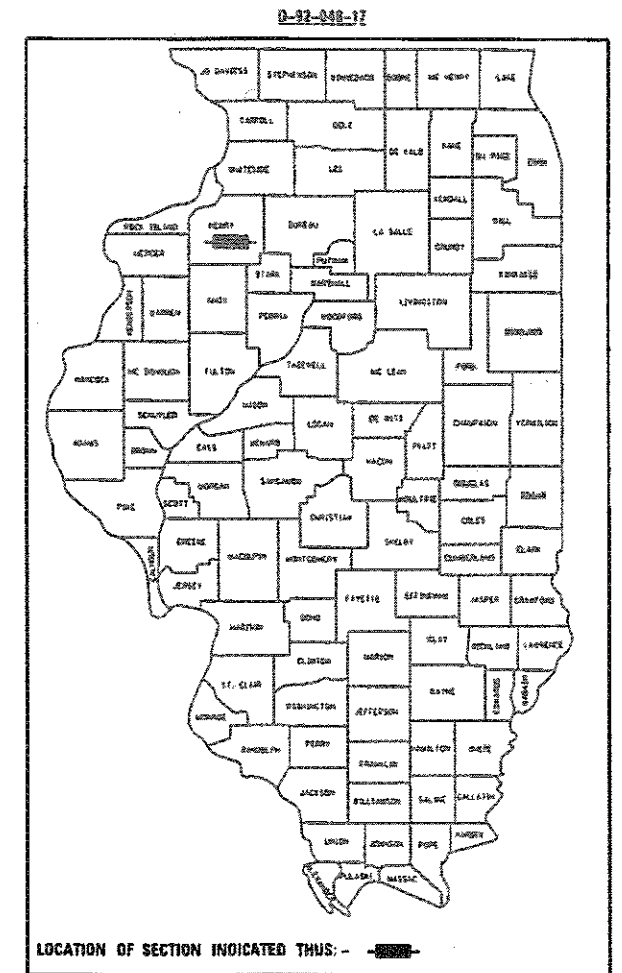
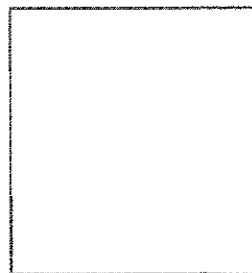
F.A.I. RTE.	SECTION	COUNTY	TOTAL SHEETS	SHEET NO.
80	137-21M-1	HENRY	11	1
		ILLINOIS	CONTRACT NO. 64M37	

INDEX OF SHEETS

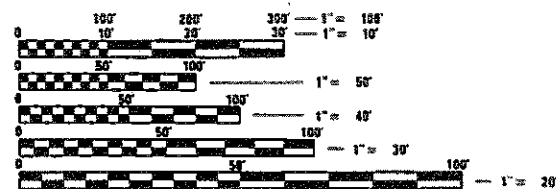
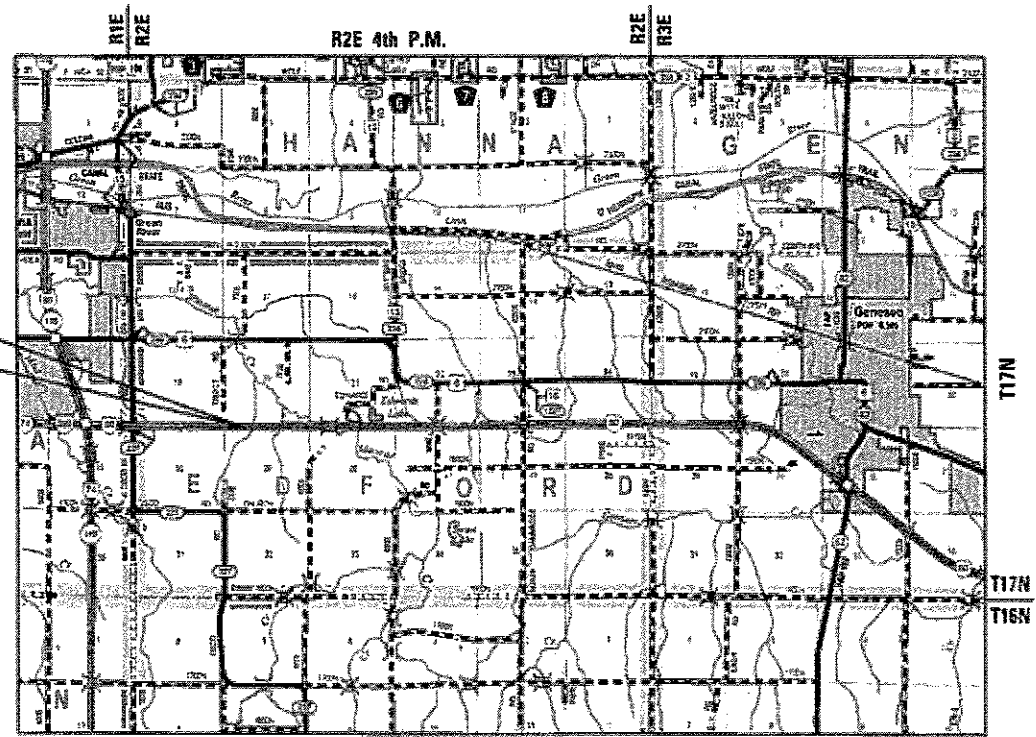
- 1 COVER SHEET
- 2 STANDARDS, GENERAL NOTES, COMMITMENTS AND TYPICAL SECTION
- 3 SUMMARY OF QUANTITIES
- 4 PLAN
- 5-11 SCALE DETAILS



PREPARED BY:
HURST-ROSCHE, INC.
HILLSBORO, ILLINOIS 62049
PHONE (217)532-3959



LOCATION OF IMPROVEMENT



FULL SIZE PLANS HAVE BEEN PREPARED USING STANDARD ENGINEERING SCALES. REDUCED SIZED PLANS WILL NOT CONFORM TO STANDARD SCALES. IN MAKING MEASUREMENTS ON REDUCED PLANS, THE ABOVE SCALES MAY BE USED.

J.U.L.I.E.
JOINT UTILITY LOCATION INFORMATION FOR EXCAVATION
1-800-892-0123
OR 811



T17N R2E
SECTIONS 20 AND 29
EDFORD TWP

PROJECT ENGINEER RICH TELFORD 218-782-8418
PROJECT MANAGER SCOTT KULLERSTRAND 815-284-5468

CONTRACT NO. 64M37

STATE OF ILLINOIS
DEPARTMENT OF TRANSPORTATION

SUBMITTED MAY 3 2018
[Signature]
REGIONAL ENGINEER

June 29 2018
[Signature]
ENGINEER OF DESIGN AND ENVIRONMENT

June 29 2018
[Signature]
DIRECTOR OF HIGHWAYS PROJECT IMPLEMENTATION 3

PRINTED BY THE AUTHORITY
OF THE STATE OF ILLINOIS

LIST OF APPLICABLE HIGHWAY STANDARDS

- 000001-06 STANDARD SYMBOLS, ABBREVIATIONS AND PATTERN
- 001001-02 AREAS OF REINFORCEMENT BARS
- 280001-07 TEMPORARY EROSION CONTROL SYSTEMS
- 701101-05 OFF-RD OPERATIONS, MULTILANE, 15' TO 24" FROM PAVEMENT EDGE
- 701106-02 OFF-RD OPERATIONS, MULTILANE, MORE THAN 15' AWAY
- 701400-09 APPROACH TO LANE CLOSURE, FREEWAY /EXPRESSWAY
- 701401-11 LANE CLOSURE, FREEWAY /EXPRESSWAY
- 701428-01 TRAFFIC CONTROL, SETUP AND REMOVAL, FREEWAY /EXPRESSWAY
- 701901-07 TRAFFIC CONTROL DEVICES
- 805001-01 ELECTRICAL SERVICE INSTALLATION DETAILS

COMMITMENTS

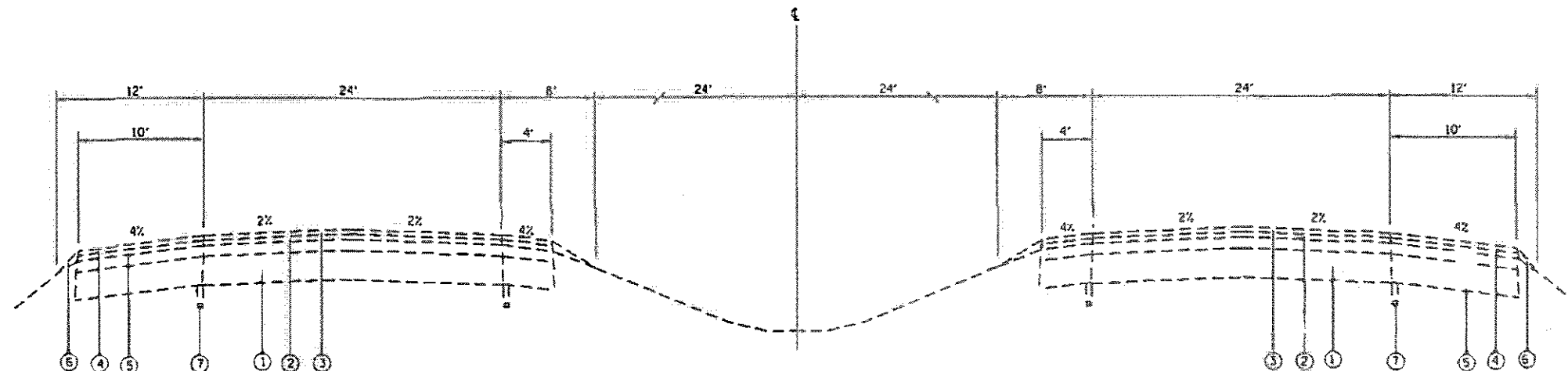
NO COMMITMENTS HAVE BEEN MADE FOR THIS PROJECT.

GENERAL NOTES

1. BEFORE STARTING ANY EXCAVATION, THE CONTRACTOR SHALL CALL "JULI.E." AT (800) 852-0123 OR 811 FOR FIELD LOCATIONS OF BURIED ELECTRIC, TELEPHONE, AND GAS UTILITIES. 48 HOURS NOTIFICATION IS REQUIRED.
2. THE CONTRACTOR SHALL COORDINATE CONSTRUCTION ACTIVITIES WITH UTILITY COMPANIES.
3. THE CONTRACTOR WILL NOT BE ALLOWED TO SET UP A YARD OR FIELD OFFICE ON STATE PROPERTY WITHOUT WRITTEN PERMISSION FROM THE DEPARTMENT.
4. DRAINAGE ADJUSTMENT OR RECONSTRUCTION LOCATIONS WILL BE DETERMINED IN THE FIELD BY THE ENGINEER.
5. IT SHALL BE THE CONTRACTOR'S RESPONSIBILITY TO VERIFY ALL DIMENSIONS AND CONDITIONS EXISTING IN THE FIELD PRIOR TO CONSTRUCTION AND ORDERING OF MATERIALS.
6. THE CONTRACTOR SHALL CONTACT THE DISTRICT TWO TRAFFIC CONTROL SUPERVISOR AT 815-284-5469 A MINIMUM OF 72 HOURS IN ADVANCE OF BEGINNING WORK.
7. WHERE SECTION OR SUB-SECTION MONUMENTS ARE ENCOUNTERED, THE ENGINEER SHALL BE NOTIFIED BEFORE SUCH MONUMENTS ARE REMOVED. THE CONTRACTOR SHALL PROTECT AND CAREFULLY PRESERVE ALL PROPERTY MARKERS AND MONUMENTS UNTIL THE OWNER, AN AUTHORIZED SURVEYOR, OR AGENT HAS WITNESSED THEIR LOCATION.
8. DO NOT SCALE PLANS FOR CONSTRUCTION DIMENSIONS.

UTILITY MEMBERS:

GENESEO TELEPHONE CO	ROGER GRANELL	309-944-8025
MIDAMERICAN ENERGY	KARL DERRICK	563-333-8706



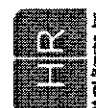
WB - TANGENT SECTION
STA 661+00 TO STA 670+00

EB - TANGENT SECTION
STA 661+00 TO STA 670+00

LEGEND

- ① PCC PAVEMENT WITH HMA OVERLAY
- ② POLYMERIZED LEVELING BINDER, IL-9.5, FC, N90, 2"
- ③ POLYMERIZED HMA SURFACE COURSE, SMA, N80, 2"
- ④ HMA SURFACE COURSE, MIX C, N50, 2"
- ⑤ HMA SHOULDERS, 2"
- ⑥ AGGREGATE SHOULDERS, TYPE B
- ⑦ PIPE UNDERDRAIN

HURST-ROSCHKE, INC.
HILLSBORO, ILLINOIS 62449
PHONE (217)532-3959
JOB NO. 180-2356



FILE NAME * P:\Projects\Contract 64M37\WB\Typical\Notes.dgn	USER NAME * HJL	DESIGNED - MAR	REVISED -	STATE OF ILLINOIS DEPARTMENT OF TRANSPORTATION	FAI 80 (I-80) WEIGH-IN-MOTION DATA COLLECTION SYSTEM STANDARDS, GENERAL NOTES, COMMITMENTS AND TYPICAL SECTION	F.A.I. RTE. 80	SECTION 137-2M-1	COUNTY HENRY	TOTAL SHEETS 11	SHEET NO. 2		
PLOT SCALE * 1/8" = 1'	CHECKED - GR	REVISOR -	SCALE: NO SCALE			SHEET NO. 1 OF 1 SHEETS	STA. 10 STA.	CONTRACT NO. 64M37				
PLOT DATE * Mar-22-2018 8:02:43 AM	DATE - 3-14-17	REVISOR -	REV. 6/19/18									
ADD. ROAD DIST. NO. 2 ILLINOIS FED. AID PROJECT												

SUMMARY OF QUANTITIES

CODE NO.	ITEM	UNIT	TOTAL QUANTITY	CONSTR. CODE	
				10% STATE 90% FEDERAL STP-URB>200K	ROADWAY 0044 URBAN
67100100	MOBILIZATION	LSUM	1		1
70100205	TRAFFIC CONTROL AND PROTECTION, STANDARD 701401	EACH	2		2
80500100	SERVICE INSTALLATION, TYPE A	EACH	1		1
81028340	UNDERGROUND CONDUIT, PVC, 1 1/2" DIA.	FOOT	30		30
81702100	ELECTRIC CABLE IN CONDUIT, 600V (XLP-TYPE USE) 1/C NO. 12	FOOT	120		120
81702400	ELECTRIC CABLE IN CONDUIT, 600V (XLP-TYPE USE) 3-1/C NO. 2	FOOT	20		20
X2501000	SEEDING, CLASS 2 (SPECIAL)	ACRE	0.25		0.25
Z0026290	FURNISHING AND INSTALLING WEIGH-IN- MOTION COMPONENTS	LSUM	1		1

HURST-ROSCHKE, INC.
 HILLSBORO, ILLINOIS 62048
 PHONE (217)532-3959
 JOB NO. 180-2355



FILE NAME	USER NAME	DESIGNED	REVISED
P:\Projects\Contract 64437 HM Rich Tel	RUJAL	MAR	-
	and 88102	DRAWN	REVISED
		UJ	-
		CHECKED	REVISED
		CR	-
		DATE	REVISED
		3-14-17	-

STATE OF ILLINOIS
DEPARTMENT OF TRANSPORTATION

FAI 80 (I-80) WEIGH-IN-MOTION DATA COLLECTION SYSTEM
SUMMARY OF QUANTITIES

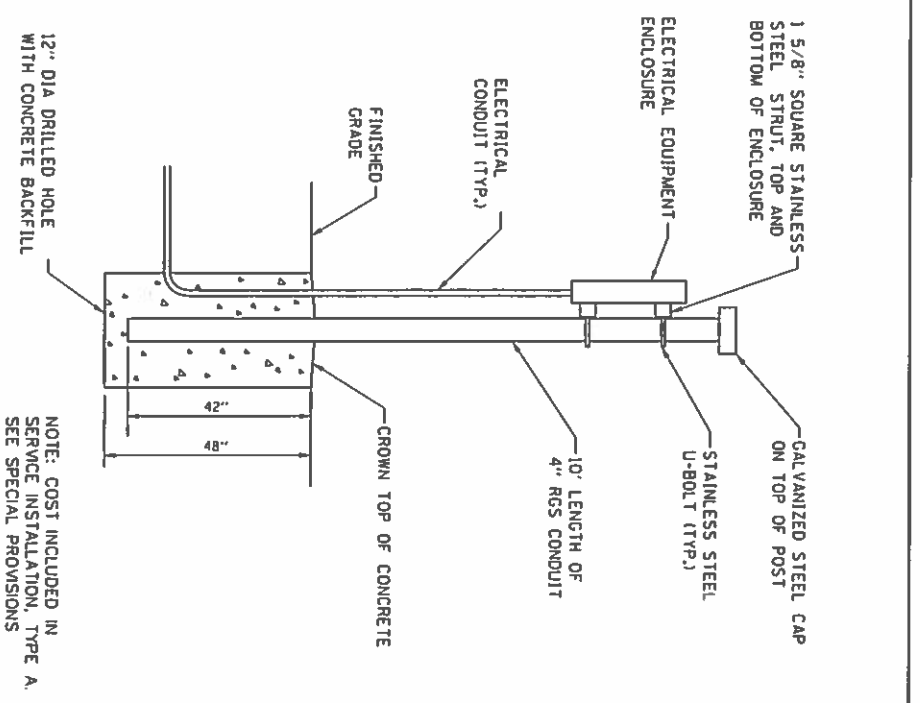
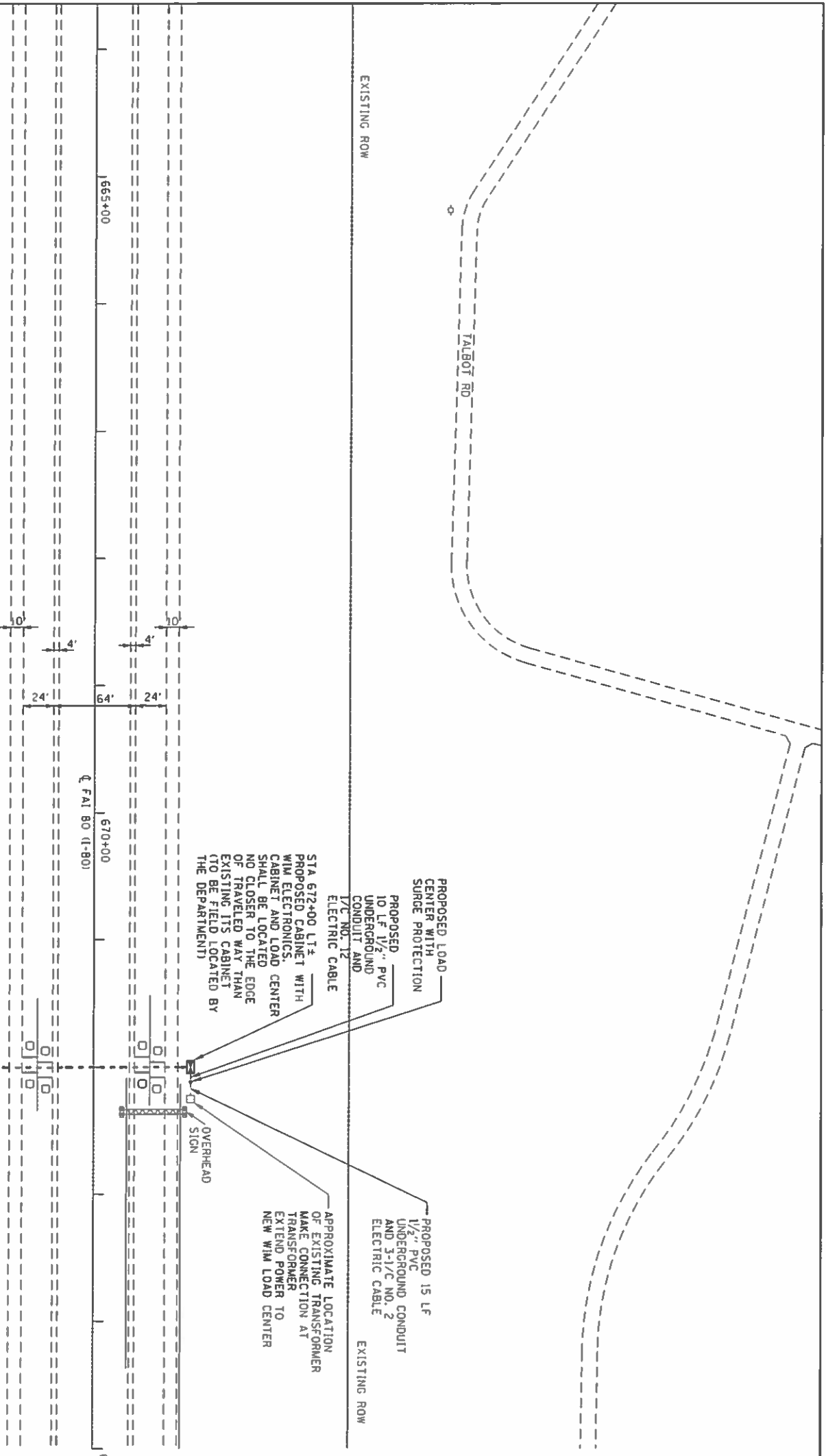
SCALE: NO SCALE | SHEET NO. 1 OF 1 SHEETS | STA. TO STA.

F.A.I. SITE	SECTION	COUNTY	TOTAL SHEETS	SHEET NO.
80	157-274-1	HENRY	11	3
CONTRACT NO. 64437			FED. ROAD DIST. NO. 7 ILLINOIS FED. AID PROJECT	



HURST-ROSCHÉ, INC.
 HILLSBORO, ILLINOIS 62049
 PHONE (217)532-3959
 JOB NO. 180-2356

NOTE:
 PLAN VIEW TAKEN FROM PLANS
 FOR CONTRACT NO. 64063



LOAD CENTER
 NOT TO SCALE



FILE NAME: P:\hrg\pav\Convent 64063\WIM Right.dwg	USER NAME: hrlh1	DESIGNED: MAR	REVISION: -
PROJECT: STATE OF ILLINOIS DEPARTMENT OF TRANSPORTATION	DATE: 3-14-17	DRAWN: UJ	REVISION: -
PLT SCALE: 1/8\"/>			
PLT DATE: Nov-21-2010 03:46:00 PM	CHECKED: CR	DATE: 3-14-17	REVISION: -

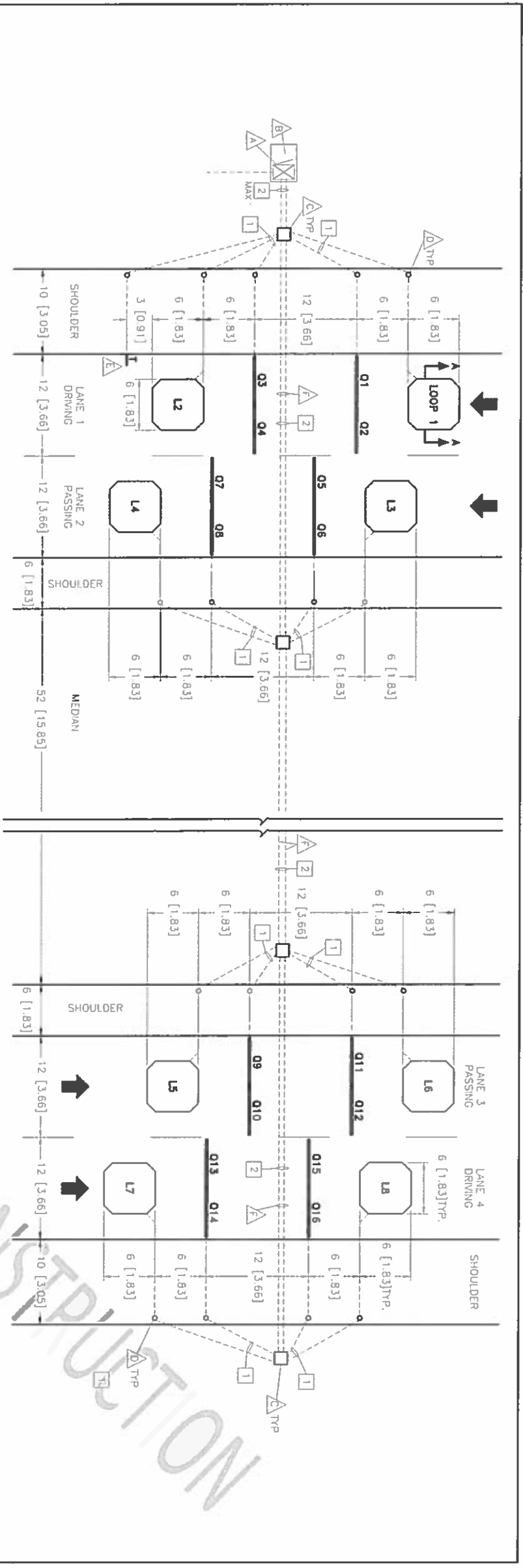
STATE OF ILLINOIS
 DEPARTMENT OF TRANSPORTATION

FAI 80 (I-80) WEIGHT-IN-MOTION DATA COLLECTION SYSTEM
 PLAN
 SCALE: 1\"/>

FAI RTE: 80	SECTION: 137-2M-1	COUNTY: HENRY	TOTAL SHEET NO.: 4
FED. ROAD DIST. NO.: 3	CONTRACT NO.: 64063	DESIGNED: HRL	DATE: 3-14-17



HURST-ROSCHKE, INC.
HILLSBORO, ILLINOIS 62049
PHONE (217)532-3959
JOB NO. 180-2356



GENERAL NOTES:

ALL CONNECTIONS BETWEEN SENSORS AND LEAD CABLES ARE DONE IN PULL BOX AND ARE SOLDERED THEN SEALED FOR WATERPROOFING. NUMBER AND PLACEMENT OF PULL BOXES NOT SHOWN.
POWER CABLES MUST BE RUN IN SEPARATE CONDUITS/PULLBOXES FROM SIGNAL CABLES.
SENSOR SPACING SHOWN IS TYPICAL. SPACING REQUIREMENT, ACTUAL SENSOR SPACING MAY BE ALTERED TO SUIT SITE CONDITIONS BY THE IRD FIELD REPRESENTATIVE.
ROAD SURFACE MUST MEET ASTM E1318 REQUIREMENTS TO ACHIEVE OPTIMAL SYSTEM PERFORMANCE.
CABLES MUST BE PROTECTED BY PVC SLEEVES WHERE THEY CROSS PAVEMENT JOINTS/CRACKS.
TEMPERATURE SENSOR MUST BE INSTALLED AS SHOWN IN DRAWING.
IRD RECOMMENDS THAT PULL BOXES BE NO FURTHER THAN 200' [61m] APART. IRD RECOMMENDS THE MINIMUM SIZE FOR PULL BOXES IS 18" [45.7cm] X 18" [45.7cm] X 12" [30.5cm].
EXACT ROUTING OF CONDUIT TO BE DETERMINED ON SITE. CONDUITS ARE LABELED LEFT TO RIGHT, TOP TO BOTTOM.
DRAWING NOT TO SCALE.

NOTES:

- ▲ CABINET WITH WIM ELECTRONICS
- ▲ CABINET BASE
- △ PULL BOX
- △ DRILL THROUGH SHOULDER FOR CONDUIT
- △ TEMPERATURE SENSOR
- △ BORE UNDER ROADWAY.

LEGEND:

- L - INDUCTIVE LOOP
- Q - LINEAR QUARTZ WIM SENSOR BY KISTLER
- T - TEMPERATURE SENSOR
- 1 - SIGNAL CONDUIT
- 2 - POWER CONDUIT
- NOTE

SIGNAL CONDUITS:

- 1 1" [25mm] CONDUIT SENSOR LEADS
- 2 3" [76mm] CONDUIT SENSOR LEADS

PRELIMINARY

REV.	DESCRIPTION	DWG/DSN	APPR.	DATE
1	PRELIMINARY RELEASE	LD/AMG		FEB 1/17

CONFIDENTIAL
THIS DOCUMENT CONTAINS INFORMATION PROPRIETARY TO IRD AND IS THEREFORE NOT TO BE DISCLOSED TO OTHERS OR USED FOR PRODUCTION WITHOUT WRITTEN PERMISSION FROM INTERNATIONAL ROAD DYNAMICS INC.



INTERNATIONAL ROAD DYNAMICS INC.
SASKATOON SASKATCHEWAN CANADA
DWG. TITLE: SITE LAYOUT-4LN KISTLER DATA COLLECTION SITE ILLINOIS DOT
DWG. No. MILLWIM08
CAD FILE: MILLWIM08_1.DWG
DIMENSIONS IN: METERS (M)
SIZE: 8
NOT TO SCALE
REV. 1
SHEET 1 OF 1

FILE NAME: P:\projects\Contract 64M37\WIM Rich	USER NAME: mlk	DESIGNED: DMM	REVISED: REVISED	STATE OF ILLINOIS DEPARTMENT OF TRANSPORTATION	FAI 80 (I-80) WEIGH-IN-MOTION DATA COLLECTION SYSTEM	SCALE: NO SCALE	SHEET NO. 5 OF 7 SHEETS	STA. 10 STA.	SECTION: 137-214-1	COUNTY: HENRY	TOTAL SHEETS: 11
PROJECT: I-80 WIM	DATE: 3-14-17	CHECKED: REVISED	REVISED: REVISED		SCALE DETAILS						CONTRACT NO. 64M37



HURST-ROSCHÉ, INC.
HILLSBORO, ILLINOIS 62049
PHONE (217)532-3959
JOB NO. 180-2356

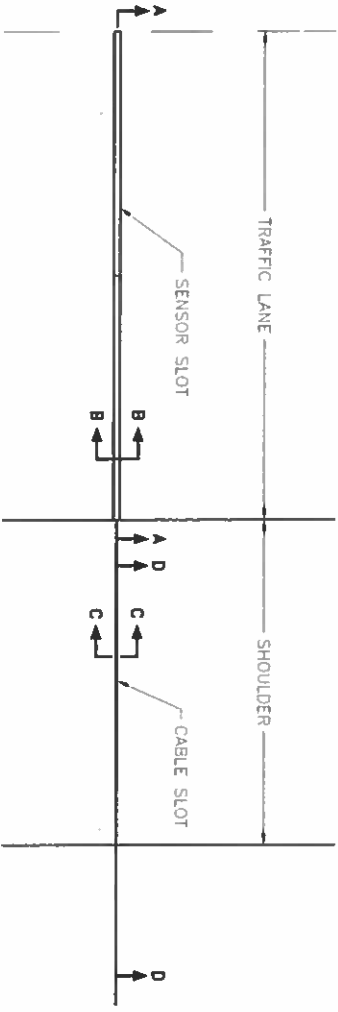
FILE NAME: C:\Users\shillu\Documents\180 Weigh in Motion\02_64M37-ahg-dwg.dwg	USER NAME: shillu	DESIGNED: -	REVISOR: -
PLT SCALE: 1/8"=1'-0"	ORIGIN: -	CHECKED: -	REVISION: -
PLT DATE: 14-Nov-22 09:30:13 AM	DATE: 3-14-17	REVISION: -	REVISION: -

STATE OF ILLINOIS
DEPARTMENT OF TRANSPORTATION

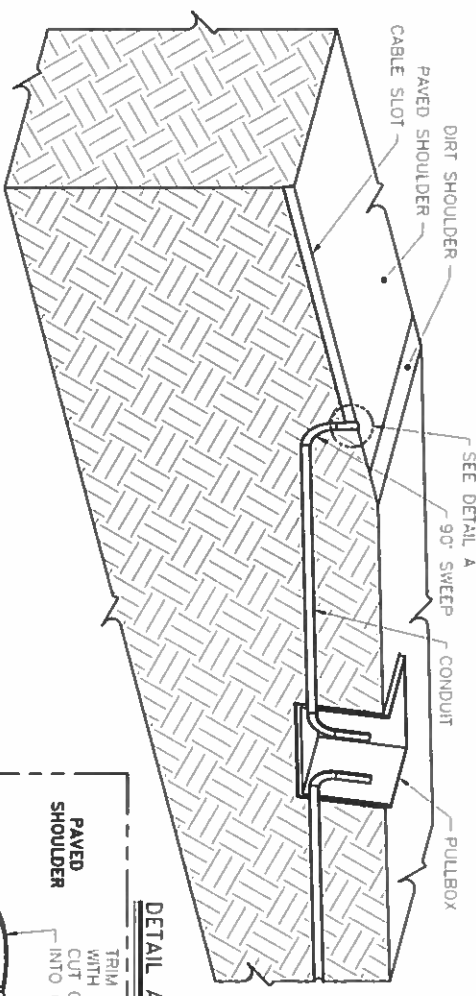
FAI 80 (I-80) WEIGH-IN-MOTION DATA COLLECTION SYSTEM
SCALE DETAILS

FILE NO: 80	SECTION: 137-2M-1	COUNTY: HENRY	TOTAL SHEETS: 11
FED. ROAD DIST. NO. 7	ILLINOIS FED. AID PROJECT	CONTRACT NO. 64M37	SHEET NO. 6

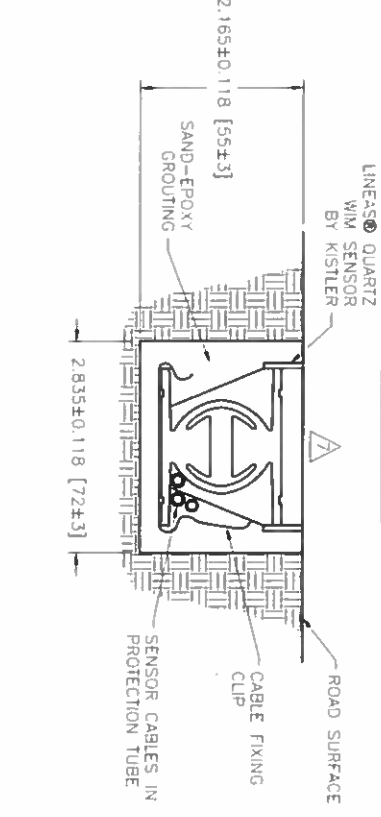
PLAN VIEW - SENSOR INSTALLATION



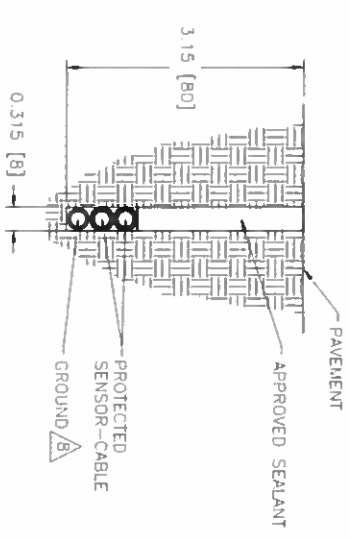
SECTION D-D (CABLE ROUTING DETAILS)



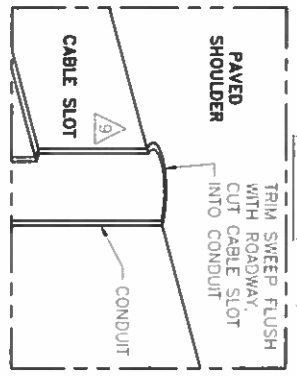
SECTION B-B



SECTION C-C



DETAIL A



NOTES:

- FOR INSTALLATION PROCESS REFER TO MANUFACTURERS INSTALLATION MANUAL.
- SLOT LENGTH IS 6 [152] LONGER THAN SENSOR
- SET SENSOR FLUSH WITH OR SLIGHTLY HIGHER THAN ROAD SURFACE USING INCLUDED LEVELING BEAMS.
- CHECK THE RESISTANCE OF THE SENSOR BY PLACING A DIGITAL MULTIMETER ACROSS THE CENTER CONDUCTOR OF THE BNC CONNECTOR AND THE OUTER BODY. THE READING SHOULD BE INFINITY.
- CHECK THE VOLTAGE OUTPUT OF THE SENSOR BY MONITORING THE METER WHEN A TRUCK PASSES OVER THE SENSOR. VOLTAGE DEFLECTION SHOULD BE OBSERVED.
- CRACKS OR SAW CUTS IN THE ROADWAY MUST NOT BE LOCATED CLOSER THAN 18 [450] UPSTREAM AND 18 [450] DOWNSTREAM OF THE SENSOR.
- SENSOR MUST BE GROUND FLUSH WITH ROAD SURFACE AFTER GROUT HAS CURED.
- IF SIGNIFICANT NOISE SOURCES ARE IDENTIFIED, OVERHEAD POWER SOURCES ETC., CONNECT OPTIONAL GROUND WIRE AS PER 690359 SECTION 4.5. OTHER END OF GROUND WIRE CONNECTS TO CABINET GROUND BUSBAR.
- CORE DRILL OR CUT NOTCH IN PAVED SHOULDER FOR SWEEP. PLUG SWEEP OPENING, COVER WITH LOOP SEALANT.

REV.	DESCRIPTION	DWNSGN	APPR.	DATE
1	PRELIMINARY RELEASE	JG/KVU	NG	Apr 20/09
A	GROUNDING NOW OPTIONAL - ADJUST NOTE B AS PER REDLINES.	YMA/MLO	NG	DEC 8/09
B	UPDATE CABLE ROUTING DETAILS AS PER REDLINES - ECO-2012	JG/MLO	TH	FEB 17/11
C	CHANGES AS PER ECO-7822	LPE/TH	MY	OCT 04/16

CONFIDENTIAL
THIS DOCUMENT CONTAINS INFORMATION PROPRIETARY TO IRD AND IS THEREFORE NOT TO BE DISCLOSED TO OTHERS OR USED FOR PRODUCTION WITHOUT WRITTEN PERMISSION FROM INTERNATIONAL ROAD DYNAMICS INC.

IR
INTERNATIONAL ROAD DYNAMICS INC.
SASKATOON SASKATCHEWAN CANADA

DWG. TITLE:
**INSTALLATION
1.5m AND 1.75m LINEAS®
QUARTZ WIM SENSOR BY KISTLER**

DWG. NO.: **81301002** REV.: **C**

DIMENSIONS IN: INCHES (mm)

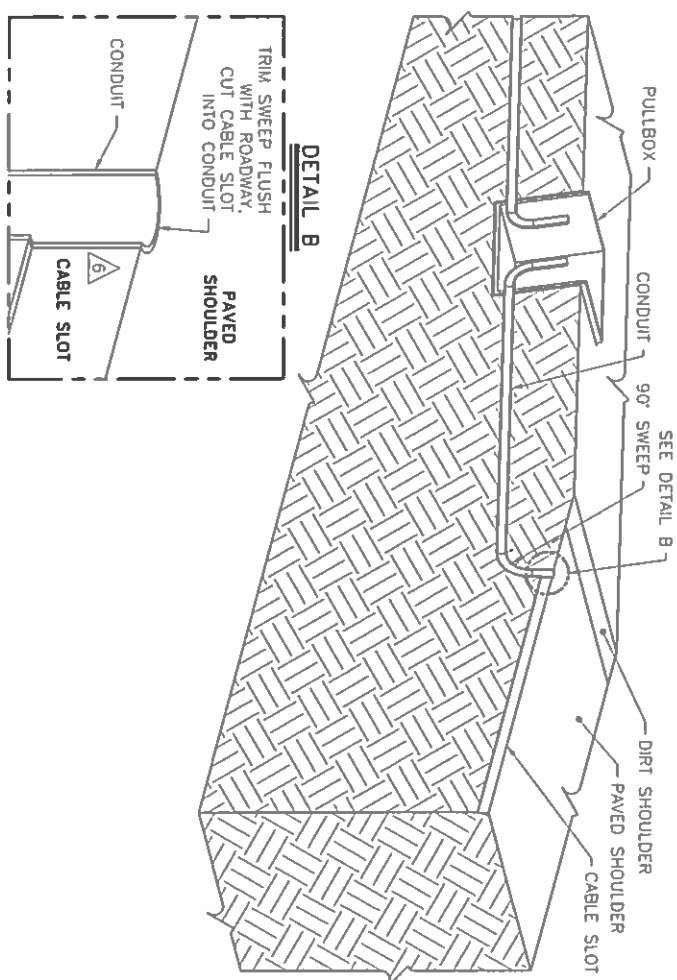
CAD FILE: 81301002.DWG SHEET 1 OF 1

COPY

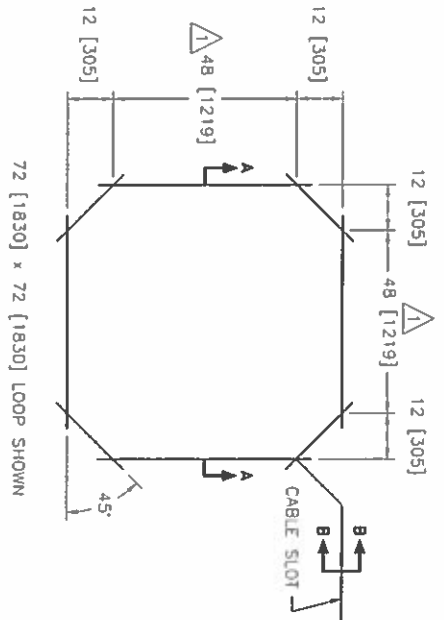


HURST-ROSCHE, INC.
HILLSBORO, ILLINOIS 62049
PHONE (217)532-3959
JOB NO. 180-2356

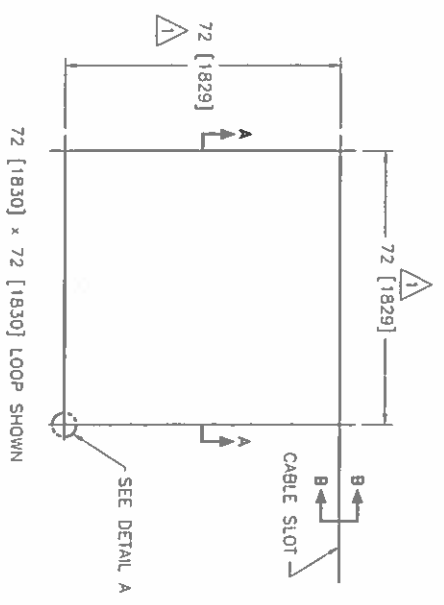
CABLE ROUTING DETAILS



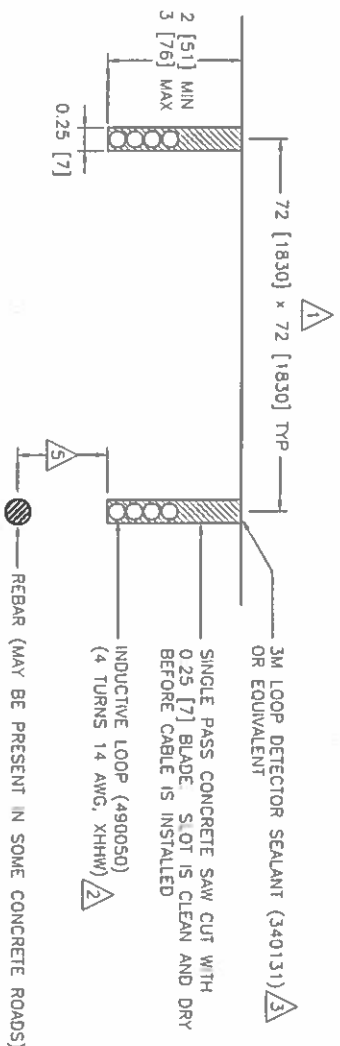
OCTAGON LOOP DIMENSION DETAIL



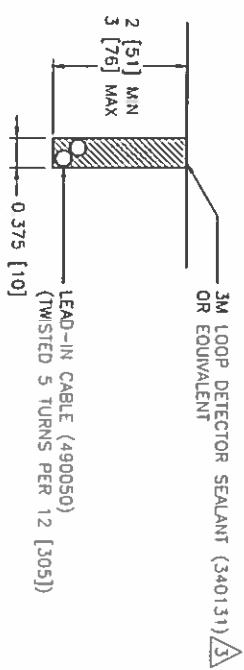
SQUARE LOOP DIMENSION DETAIL



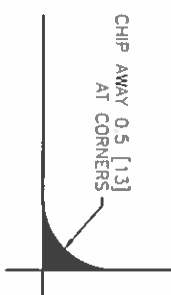
SECTION A-A



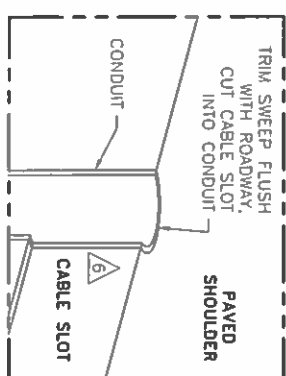
SECTION B-B



DETAIL A



DETAIL B



NOTES:

- 1 LOOP SIZE AS SPECIFIED ON SITE LAYOUT AND IN ACCORDANCE WITH IRD 3EGR0001.
- 2 NUMBER OF TURNS AS SPECIFIED ON SITE LAYOUT AND IN ACCORDANCE WITH IRD 3EGR0001.
- 3 USE CALKING GUN 340132 OR 340148.
- 4 LOOP INSTALLATION MANUALS 690279 - PERMANENT OCTAGON LOOPS 690289 - PERMANENT SQUARE LOOPS
- 5 IF THE LOOP IS INSTALLED OVER REBAR, THERE MUST BE A MINIMUM OF 2 [50.8] CONCRETE BELOW AND A MINIMUM OF 1 [25.4] FILL ABOVE THE WIRES.
- 6 CORE DRILL OR CUT NOTCH IN PAVED SHOULDER FOR SWEEP. PLUG SWEEP OPENING, COVER WITH LOOP SEALANT.

REV.	DESCRIPTION	BY	DATE
A	INITIAL RELEASE	JG/JGD	DEC 21/05
B	ADD NOTE 5, ECO-01.	JG/JAC	AUG 31/06
C	UPDATE CABLE ROUTING DETAILS AS PER REDLINES - ECO-2008.	JG/MLO	FEB 17/11
D	MOVE REBAR IMAGE AND NOTE TO SECTION AA - ECO-4753.	JG/SPJ	JUN 7/13

CONFIDENTIAL
THIS DOCUMENT CONTAINS INFORMATION PROPRIETARY TO IRD AND IS THEREFORE NOT TO BE DISCLOSED TO OTHERS OR USED FOR PRODUCTION WITHOUT WRITTEN PERMISSION FROM INTERNATIONAL ROAD DYNAMICS INC.

INTERNATIONAL ROAD DYNAMICS INC.
SASKATOON SASKATCHEWAN CANADA

DWG. TITLE: **INSTALLATION XHHW VEHICLE DETECTION LOOPS**

DWG. NO. **81300101** REV: **D**

CAD FILE: **81300101.DWG** SHEET **1 OF 1**

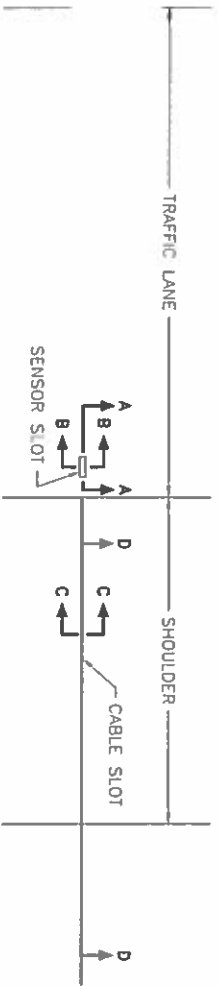
COPY

FILE NAME: C:\Users\miller\Documents\180\180.dwg	USER NAME: mlin	DESIGNED: DRAMM	REVISED: -	STATE OF ILLINOIS DEPARTMENT OF TRANSPORTATION	FAI 80 (1-80) WEIGH-IN-MOTION DATA COLLECTION SYSTEM	FED. ROAD DIST. NO. 2 ILLINOIS
SCALE: 1"=10'-0"	PLT SCALE: 1"=10'-0"	CHECKED: -	REVISOR: -	DATE: 3-14-17	SCALE: NO SCALE	SHEET NO. 3 OF 7 SHEETS
DATE: 3-14-17	DATE: 3-14-17	REVISOR: -	REVISOR: -	DATE: 3-14-17	SHEET NO. 3 OF 7 SHEETS	SHEET NO. 3 OF 7 SHEETS

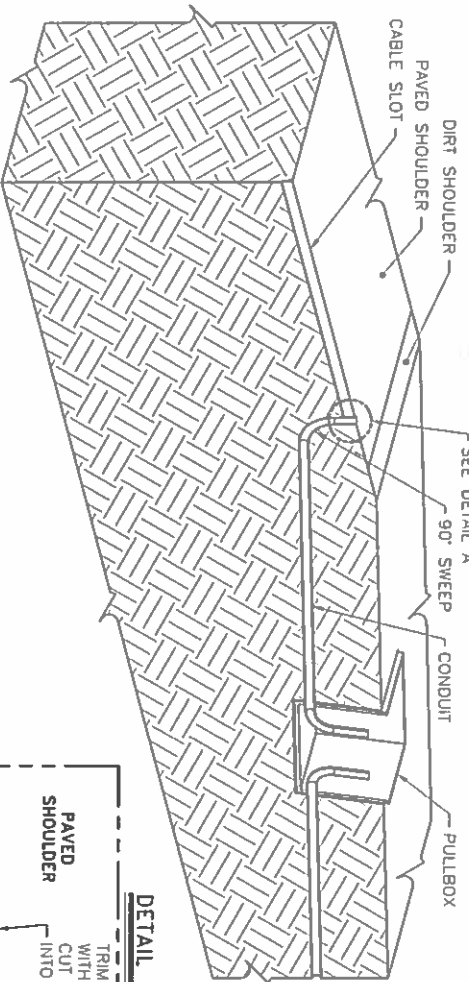


HURST-ROSCHKE, INC.
HILLSBORO, ILLINOIS 62049
PHONE (217)532-3959
JOB NO. 180-2356

PLAN VIEW - SENSOR INSTALLATION

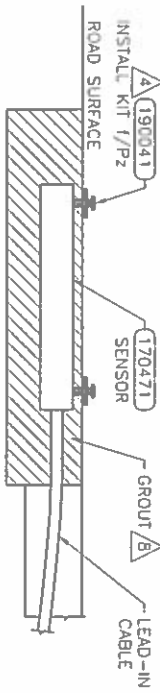


SECTION D-D (CABLE ROUTING DETAILS)

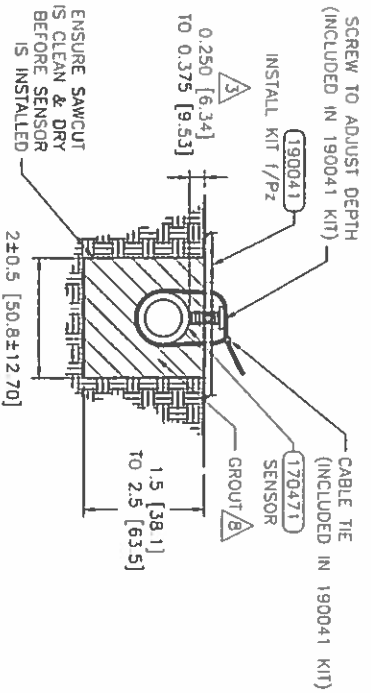


SENSOR P/N 170471

SECTION A-A

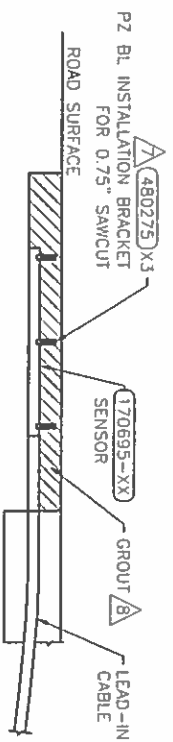


SECTION B-B

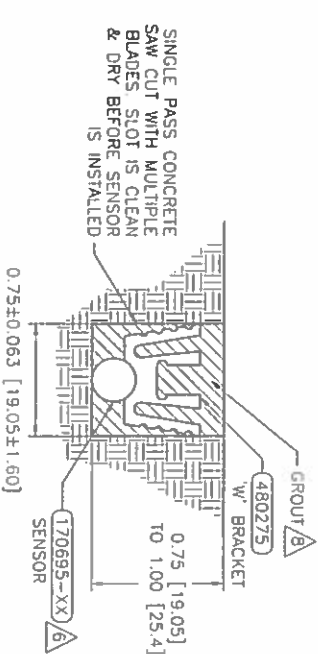


SENSOR P/N 170695-XX

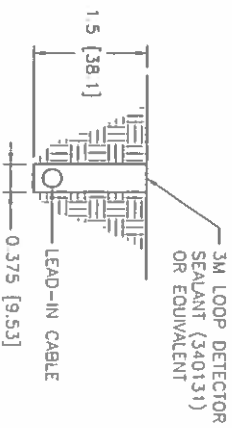
SECTION A-A



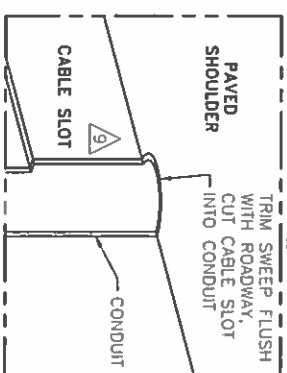
SECTION B-B



SECTION C-C



DETAIL A



NOTES: (THIS SHEET ONLY)

- 1 CRACKS OR SAW CUTS IN THE ROADWAY MUST NOT BE LOCATED CLOSER THAN 18" [450MM] UPSTREAM AND 18 [450MM] DOWNSTREAM OF THE TEMPERATURE SENSOR.
- 2 SLOT LENGTH IS 4" [102MM] LONGER THAN SENSOR.
- 3 SET THE SENSOR AT THE CORRECT DEPTH.
- 4 PLACE A BRACKET AT EACH END OF THE SENSOR.
- 5 LOCATE SENSOR IN SAME PAVEMENT AND WITHIN 6' [2M] OF THE TEMPERATURE COMPENSATED DEVICE. AVOID PLACING IN WHEEL PATH.
- 6 WEDGE SENSOR AGAINST FLOOR OF CUT UNDER "W" CLIP (P/N 480275).
- 7 SPACE THREE BRACKETS (P/N 480275) EVENLY OVER THE LENGTH OF THE SENSOR.
- 8 USE GROUT OF SAME TYPE AS THAT OF SENSOR BEING COMPENSATED. PIEZO - USE AS475 (340028) OR PU200 (172000285) KISTLER - USE KISTLER GROUT (340139) OR FLEXULITH (340082).
- 9 CORE DRILL OR CUT NOTCH IN PAVED SHOULDER FOR SWEEP PLUG SWEEP OPENING. COVER WITH LOOP SEALANT.

REV.	DESCRIPTION	DWN/DNSN	APPR.	APPR.	DATE
A	INITIAL RELEASE	JG/ACo	DP-	DBo	MAR 21/08
B	REMOVE LMS FROM TITLE BLOCK ECO-01.	JG/BMC	MLO	DBo	DEC 19/08
C	ADD INSTALLATION INSTRUCTIONS FOR 1 WIRE SENSOR (P/N 170695) ECO-02.	JG/MLO	MLO	FLU	APR 18/08
D	ADD NOTES FOR SPECIFIC GROUTS. ADD SHEET 2 - DRAWING FOR WEIGH/PAD INSTALL - ECO-03.	JG/SpJ	DP-	SpJ	Aug 13/08
E	UPDATE CABLE ROUTING DETAILS AS PER REQUINS -ECO-013.	JG/MLO	THs	SpJ	JAN 24/13



INTERNATIONAL ROAD DYNAMICS INC.
SASKATOON SASKATCHEWAN CANADA

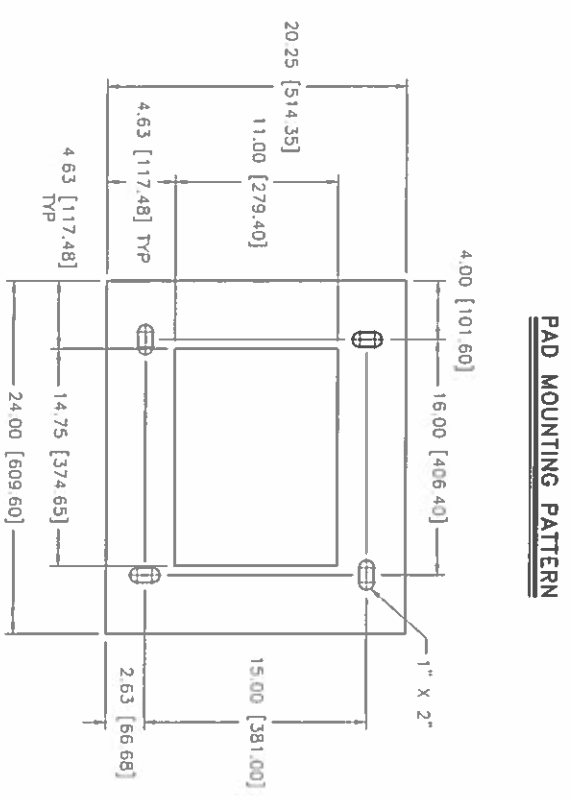
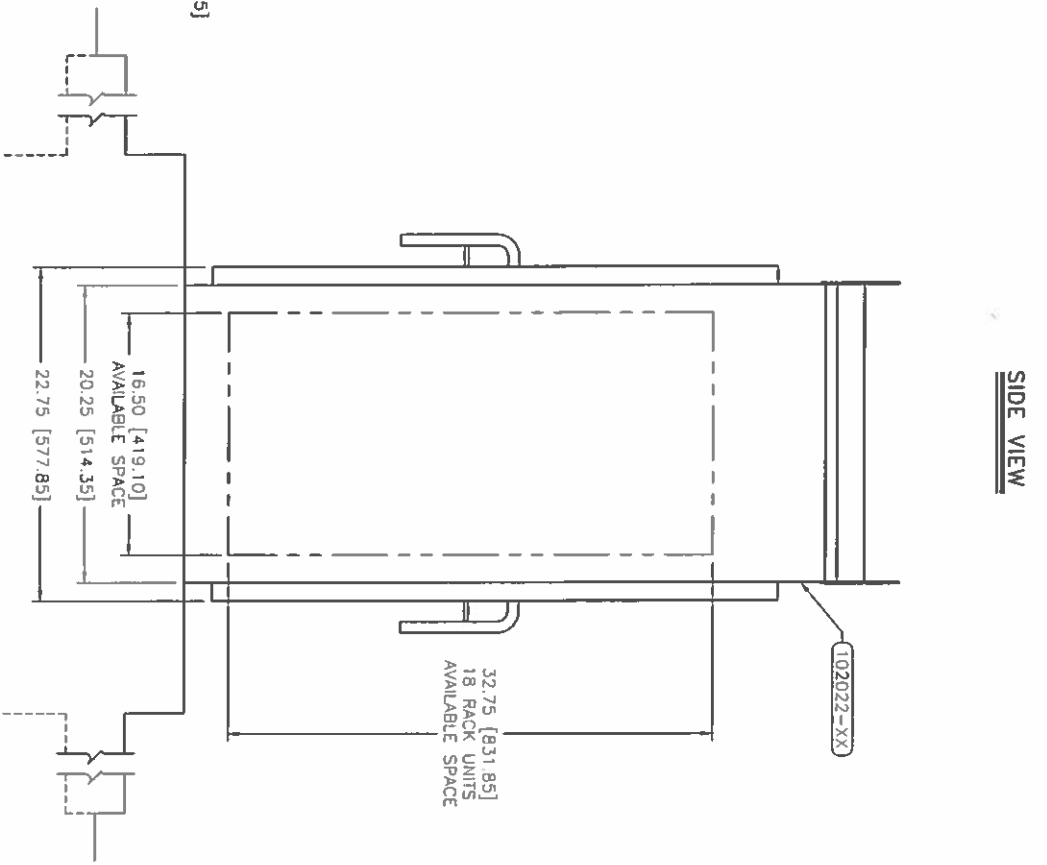
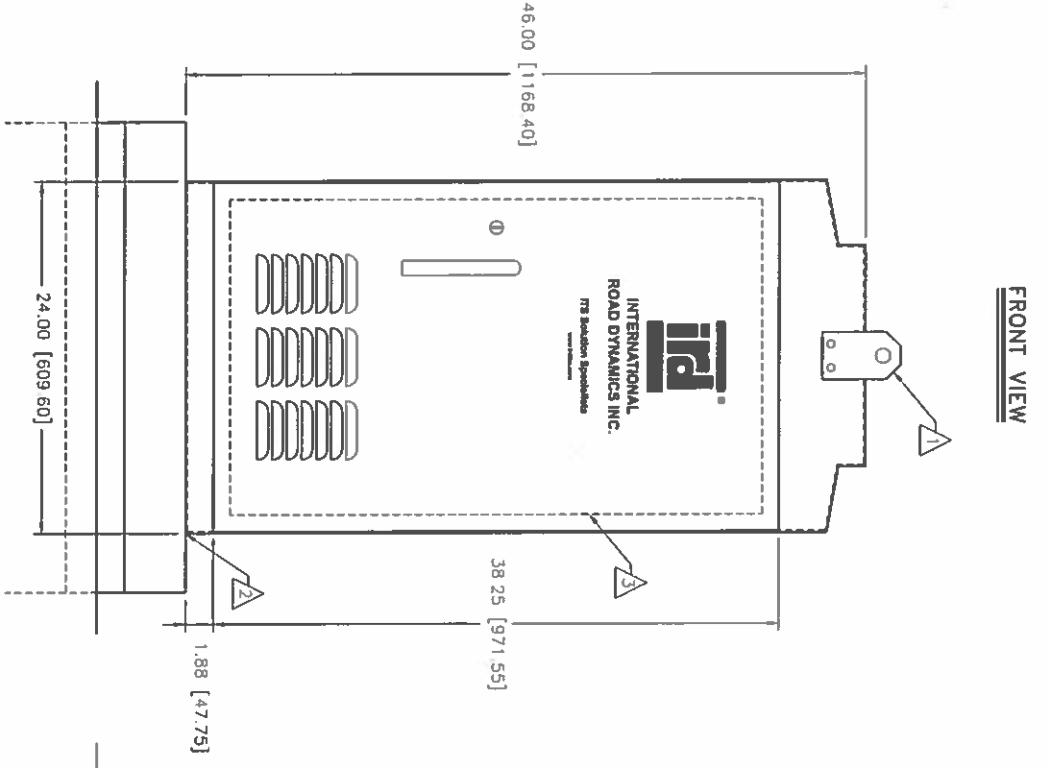
DWG. TITLE: **INSTALLATION IN ROAD TEMPERATURE SENSOR**
DWG. NO. **81302201**
DWG. FILE: **81302201.DWG**
SHEET **1** OF **2**

COPY

FILE NAME: C:\Users\mlluc\OneDrive\Work\180 Weigh in Motion\180 Weigh in Motion\180 Weigh in Motion.dwg	DESIGNED: -	REVISIONS:	STATE OF ILLINOIS DEPARTMENT OF TRANSPORTATION	FAI 80 (1-80) WEIGH-IN-MOTION DATA COLLECTION SYSTEM	COUNTY: -	TOTAL SHEETS: 9
USER NAME: mlluc	DRAWN: -	CHECKED: -	SCALE: NO SCALE	SCALE DETAILS: 5/16" TO 5/16"	HEAVY: 11	SHEET NO. 64M37
DATE: 3-14-17	REVISIONS:	DATE: -	SHEET NO. 4 OF 7 SHEETS	TO 5/16"	CONTRACT NO. 64M37	



HURST-ROSCHÉ, INC.
 HILLSBORO, ILLINOIS 62049
 PHONE (217)532-3959
 JOB NO. 180-2356



- NOTES:**
- 1 LIFTING EYE. MAY BE UNBOLTED AND ROTATED 180° FOR STORAGE.
 - 2 SEAL CABINET TO FOUNDATION JOINT WITH SILICONE SEALANT TO PREVENT WATER INTRUSION. LOCATE CABINET ABOVE HIGH WATER LEVEL.
 - 3 REMOVABLE 19" EIA RACK.

REV.	DESCRIPTION	DIV/DSN/	APPR.	APPR.	DATE
A	INITIAL RELEASE	JG/DP	DP	DB	Mar 30/06

CONFIDENTIAL
 THIS DOCUMENT CONTAINS
 INFORMATION PROPRIETARY
 TO IRD AND IS THEREFORE
 NOT TO BE DISCLOSED TO
 OTHERS OR USED FOR
 PRODUCTION WITHOUT
 WRITTEN PERMISSION
 FROM INTERNATIONAL
 ROAD DYNAMICS INC.

INTERNATIONAL ROAD DYNAMICS INC.
 SASKATOON SASKATCHEWAN CANADA

DWG TITLE:
INSTALLATION
 336s NEMA 3R SERIES ICENT
 ROADSIDE ELECTRONICS

SIZE: **B**
 NOT TO SCALE

DWG. No. **81300903**
 CAD FILE: 81300903.DWG

REV.: **A**
 SHEET **1** OF **1**

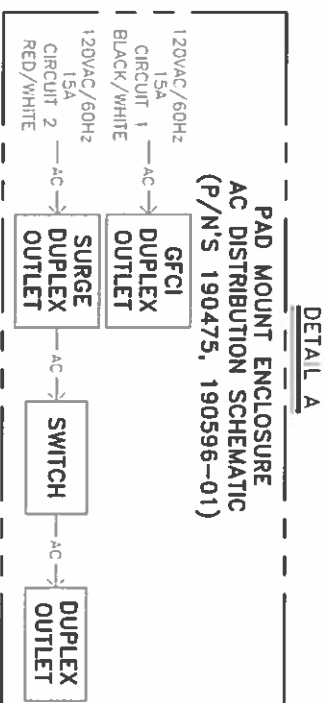
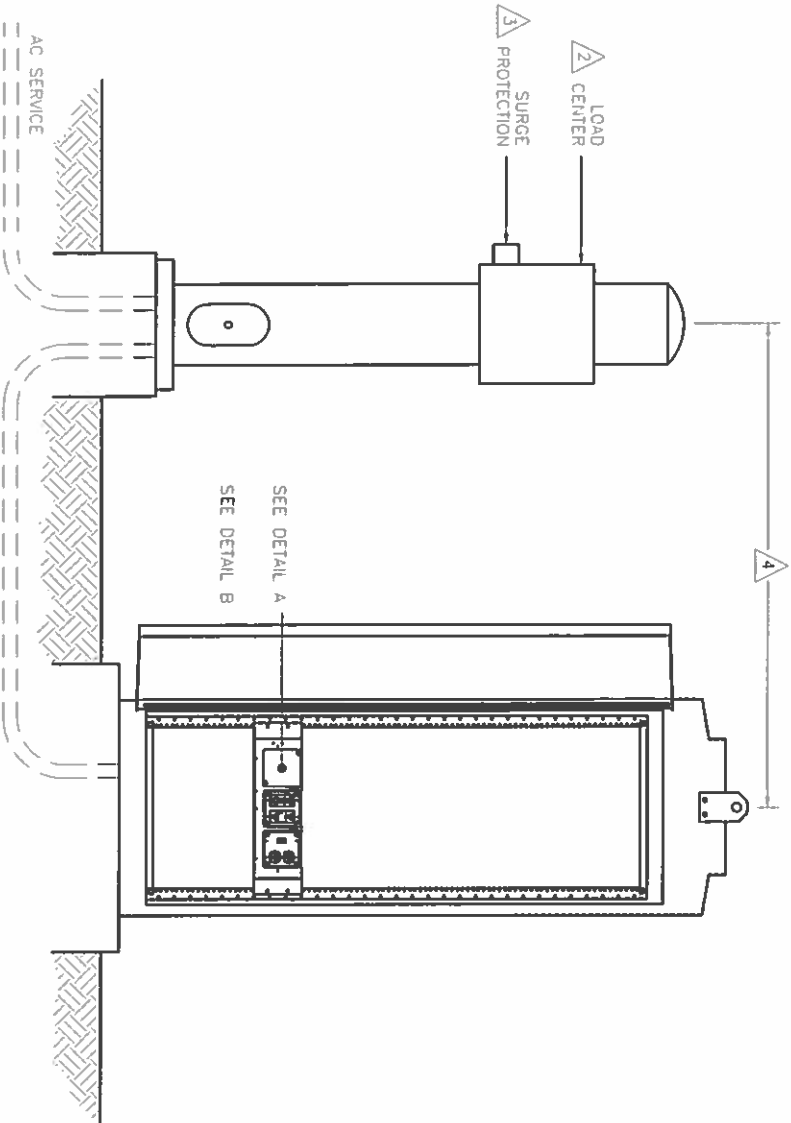
COPY

FILE NAME: C:\Users\jill\Local Desktop\11-08 Weight in Motion\336s-3R-217-218-219-220-221-222-223-224-225-226-227-228-229-230-231-232-233-234-235-236-237-238-239-240-241-242-243-244-245-246-247-248-249-250-251-252-253-254-255-256-257-258-259-260-261-262-263-264-265-266-267-268-269-270-271-272-273-274-275-276-277-278-279-280-281-282-283-284-285-286-287-288-289-290-291-292-293-294-295-296-297-298-299-300-301-302-303-304-305-306-307-308-309-310-311-312-313-314-315-316-317-318-319-320-321-322-323-324-325-326-327-328-329-330-331-332-333-334-335-336-337-338-339-340-341-342-343-344-345-346-347-348-349-350-351-352-353-354-355-356-357-358-359-360-361-362-363-364-365-366-367-368-369-370-371-372-373-374-375-376-377-378-379-380-381-382-383-384-385-386-387-388-389-390-391-392-393-394-395-396-397-398-399-400-401-402-403-404-405-406-407-408-409-410-411-412-413-414-415-416-417-418-419-420-421-422-423-424-425-426-427-428-429-430-431-432-433-434-435-436-437-438-439-440-441-442-443-444-445-446-447-448-449-450-451-452-453-454-455-456-457-458-459-460-461-462-463-464-465-466-467-468-469-470-471-472-473-474-475-476-477-478-479-480-481-482-483-484-485-486-487-488-489-490-491-492-493-494-495-496-497-498-499-500-501-502-503-504-505-506-507-508-509-510-511-512-513-514-515-516-517-518-519-520-521-522-523-524-525-526-527-528-529-530-531-532-533-534-535-536-537-538-539-540-541-542-543-544-545-546-547-548-549-550-551-552-553-554-555-556-557-558-559-560-561-562-563-564-565-566-567-568-569-570-571-572-573-574-575-576-577-578-579-580-581-582-583-584-585-586-587-588-589-590-591-592-593-594-595-596-597-598-599-600-601-602-603-604-605-606-607-608-609-610-611-612-613-614-615-616-617-618-619-620-621-622-623-624-625-626-627-628-629-630-631-632-633-634-635-636-637-638-639-640-641-642-643-644-645-646-647-648-649-650-651-652-653-654-655-656-657-658-659-660-661-662-663-664-665-666-667-668-669-670-671-672-673-674-675-676-677-678-679-680-681-682-683-684-685-686-687-688-689-690-691-692-693-694-695-696-697-698-699-700-701-702-703-704-705-706-707-708-709-710-711-712-713-714-715-716-717-718-719-720-721-722-723-724-725-726-727-728-729-730-731-732-733-734-735-736-737-738-739-740-741-742-743-744-745-746-747-748-749-750-751-752-753-754-755-756-757-758-759-760-761-762-763-764-765-766-767-768-769-770-771-772-773-774-775-776-777-778-779-780-781-782-783-784-785-786-787-788-789-790-791-792-793-794-795-796-797-798-799-800-801-802-803-804-805-806-807-808-809-810-811-812-813-814-815-816-817-818-819-820-821-822-823-824-825-826-827-828-829-830-831-832-833-834-835-836-837-838-839-840-841-842-843-844-845-846-847-848-849-850-851-852-853-854-855-856-857-858-859-860-861-862-863-864-865-866-867-868-869-870-871-872-873-874-875-876-877-878-879-880-881-882-883-884-885-886-887-888-889-890-891-892-893-894-895-896-897-898-899-900-901-902-903-904-905-906-907-908-909-910-911-912-913-914-915-916-917-918-919-920-921-922-923-924-925-926-927-928-929-930-931-932-933-934-935-936-937-938-939-940-941-942-943-944-945-946-947-948-949-950-951-952-953-954-955-956-957-958-959-960-961-962-963-964-965-966-967-968-969-970-971-972-973-974-975-976-977-978-979-980-981-982-983-984-985-986-987-988-989-990-991-992-993-994-995-996-997-998-999-1000	USER NAME: jill	DESIGNED: -	REVISOR: -	SCALE: 1/8" = 1'-0"	DATE: 3-14-17	STATE OF ILLINOIS DEPARTMENT OF TRANSPORTATION	FAI 80 (I-80) WEIGH-IN-MOTION DATA COLLECTION SYSTEM	SECTION: 137-214-1	COUNTY: HENRY	TOTAL SHEET NO.: 9
--	-----------------	-------------	------------	---------------------	---------------	--	--	--------------------	---------------	--------------------



HURST-ROSCHÉ, INC.
 HILLSBORO, ILLINOIS 62049
 PHONE (217)532-3959
 JOB NO. 180-2356

33X CABINET
BACK INSIDE VIEW



PRELIMINARY

- NOTES:**
- 1 ALL ELECTRICAL DEVICES, GROUNDING, BONDING, WIRING AND MOUNTING MUST MEET THE NATIONAL ELECTRICAL CODE NFPA70 AND LOCAL ELECTRICAL CODE.
 - 2 PROVIDE SUITABLE INDOOR OR OUTDOOR LOAD CENTER. IRD RECOMMENDS FOR CSA USE SQUARE D P/N C0018M100RB60 OR P/N Q02L70RB, FOR UL USE P/N Q0112M100RB OR P/N Q024L70RB OR EQUIVALENT.
 - 3 EQUIPMENT MUST BE PROTECTED WITH AN ANSI/IEEE C62.41 CATEGORY C RATED PROTECTION DEVICE WITH A MINIMUM PEAK CURRENT HANDLING CAPABILITY OF 36KA (8/20µS) INSTALLED AT THE LOAD CENTER OR SUB LOAD CENTER.
 - 4 30m MAXIMUM CABLE LENGTH BETWEEN CATEGORY C PROTECTOR AND ENCLOSURE(S).

REV	DESCRIPTION	DW/DSN	APPR.	APPR.	DATE
1	PRELIMINARY RELEASE	Lpam/MyG	MyG	DP-	Jan 31/17

CONFIDENTIAL
 THIS DOCUMENT CONTAINS INFORMATION PROPRIETARY TO IRD AND IS THEREFORE NOT TO BE DISCLOSED TO OTHERS OR USED FOR PRODUCTION WITHOUT WRITTEN PERMISSION FROM INTERNATIONAL ROAD DYNAMICS INC.

INTERNATIONAL ROAD DYNAMICS INC.
 SASKATOON SASKATCHEWAN CANADA

DWG. TITLE:
120VAC CABINET POWER INSTALLATION
ROAD SIDE ELECTRONICS

SIZE: B
 NOT TO SCALE

DWG. NO. _____
 CAD FILE: _____

REV: _____
 SHEET 1 OF 1

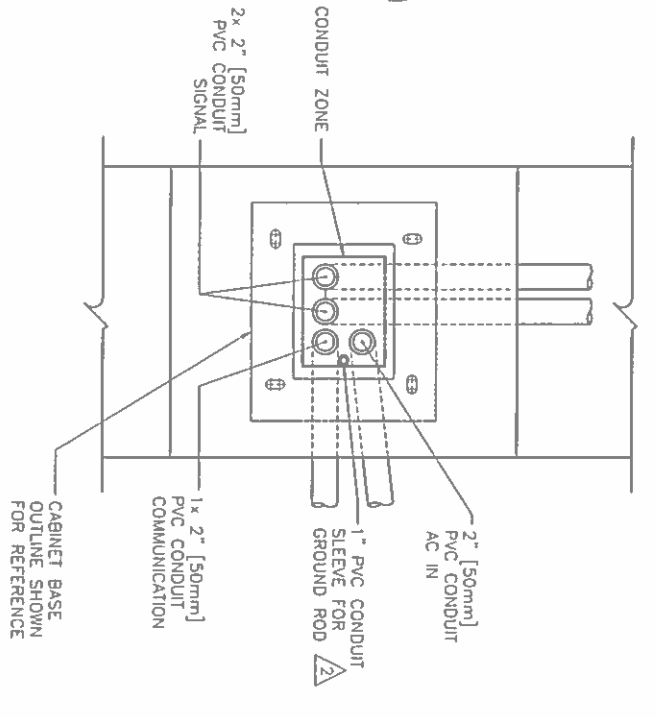
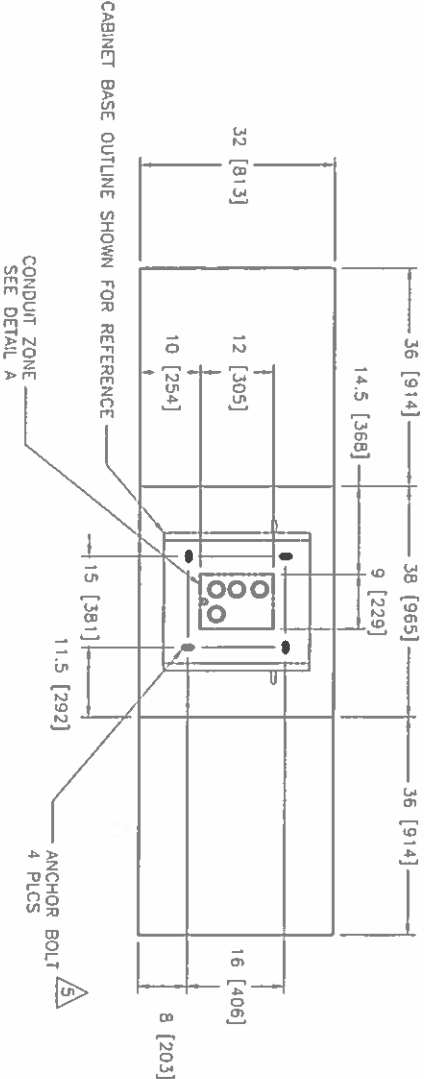
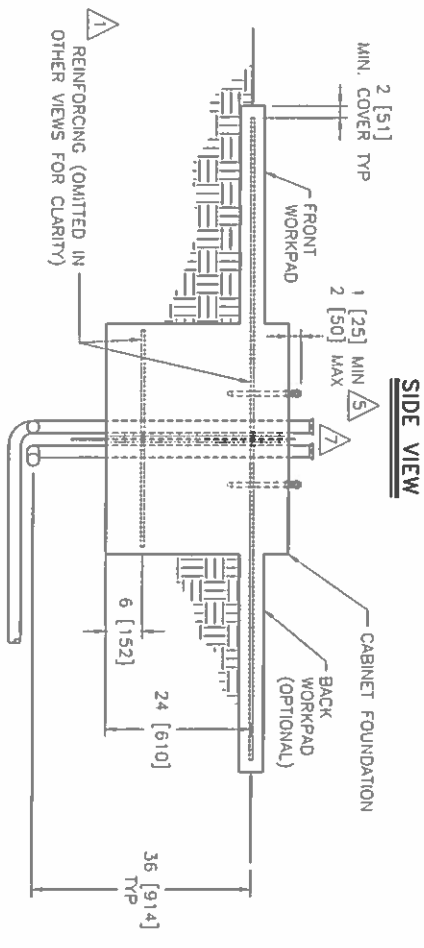
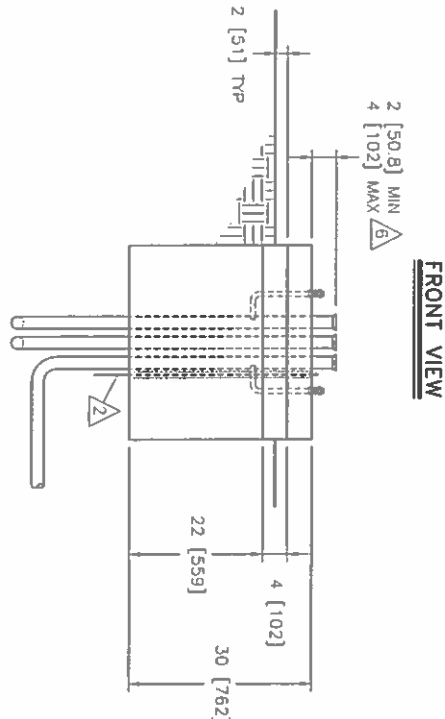
FILE NAME: USER NAME: INITIALS: DESIGNED: DRAWN: CHECKED: DATE: 3-14-17	DESIGNED: DRAWN: CHECKED: DATE: 3-14-17	REVISOR: REVISION: REVISION: REVISION: REVISION: REVISION:	STATE OF ILLINOIS DEPARTMENT OF TRANSPORTATION	FAI 80 (I-80) WEIGH-IN-MOTION DATA COLLECTION SYSTEM	SCALE: NO SCALE	SHEET NO. 6 OF 7 SHEETS	STA. TO STA.	F.A.I. R.E. SECTION COUNTY TOTAL SHEETS NO. NO. COUNTY COUNTY COUNTY CONTRACT NO. 64M37
---	---	--	--	--	-----------------	-------------------------	--------------	---



HURST-ROSCHÉ, INC.
HILLSBORO, ILLINOIS 62049
PHONE (217)532-3959
JOB NO. 180-2356

FILE NAME: C:\Users\william.rosche\OneDrive\Documents\180 Weigh in Motion\182.dwg	USER NAME: william	DESIGNED: -	REVISION: -	DATE: -	SCALE: NO SCALE	SHEET NO. 1 OF 7 SHEETS	STA. TO STA.	F.A.I. R/E. 8D	SECTION (17-2M-1)	COUNTY MENARD	TOTAL SHEETS 11
DESIGNED: -	DRAWN: -	CHECKED: -	REVISION: -	DATE: -	SCALE: NO SCALE	SHEET NO. 1 OF 7 SHEETS	STA. TO STA.	F.A.I. R/E. 8D	SECTION (17-2M-1)	COUNTY MENARD	TOTAL SHEETS 11
STATE OF ILLINOIS DEPARTMENT OF TRANSPORTATION											
FAI 80 (1-80) WEIGH-IN-MOTION DATA COLLECTION SYSTEM											
SCALE DETAILS											
FED. ROAD DIST. NO. 2 (ILLINOIS) FED. AID PROJECT											

- NOTES:**
- 1 INSTALL REINFORCING MATS, #4 [12M] BAR 12" [300mm] ON CENTER EACH WAY. REINFORCEMENTS ARE MINIMUM REQUIREMENTS AND MAY BE SUPERSEDED BY LOCAL CONSTRUCTION CODES.
 - 2 GROUND ROD MUST BE PROVIDED TO MEET LOCAL ELECTRICAL CODE.
 - 3 ALL CONDUITS SHOWN SHALL BE FURNISHED AND INSTALLED IN FOUNDATION IN ACCORDANCE WITH LOCAL CODES. CAP IF NOT USED. ADDITIONAL CONDUITS MAY BE REQUIRED. CONDUITS SHALL EXIT FOUNDATION IN DIRECTION APPROPRIATE FOR SITE GEOMETRY.
 - 4 CONCRETE SHALL HAVE MINIMUM COMPRESSIVE STRENGTH OF 3000 PSI [20.7 MPa].
 - 5 CABINET ANCHORS MUST BE GALVANIZED OR STAINLESS STEEL AND MAY BE CAST IN PLACE. CHEMICAL OR EXPANSION TYPE DRILLED INTO BASE. TYPICAL SIZE IS 3/4" NC x 12" x 4".
 - 6 THE CABINET BASE CONDUIT MUST BE HIGHER THAN SURROUNDING PULL BOXES. THE HEIGHT OF CONDUITS ENDING IN THE CABINET MUST BE HIGHER THAN THE OTHER END TO PREVENT WATER ENTRY DUE TO HYDROSTATIC PRESSURE. ALL CONDUITS SHALL HAVE END BELLS INSTALLED OR NO SHARP EDGES.



- NOTES: (CONTINUED)**
- A SEAL ALL CONDUIT ENDS WITH STEEL WOOL AND DUCT SEAL TO REDUCE RODENT OR INSECT INTRUSION AND MOISTURE. DO NOT USE PERMANENT SEALANT AS CONDUITS MAY NEED TO BE REENTERED IN THE FUTURE FOR CABLE REPLACEMENT OR ADDITIONS.

REV.	DESCRIPTION	DRAWN	APPR.	DATE
A	INITIAL RELEASE	JGMD	DP	Mar 30, 08

CONFIDENTIAL
THIS DOCUMENT CONTAINS INFORMATION PROPRIETARY TO IRD AND IS THEREFORE NOT TO BE DISCLOSED TO OTHERS OR USED FOR PRODUCTION WITHOUT WRITTEN PERMISSION FROM INTERNATIONAL ROAD DYNAMICS INC.

SIZE: B	NOT TO SCALE
DIMENSIONS IN: INCHES (mm)	
DWG. NO.: 81300906	REV.: A
CAD FILE: 81300906.DWG	SHEET 1 OF 1

COPY

INTERNATIONAL ROAD DYNAMICS INC.
SASKATOON SASKATCHEWAN CANADA

DWG. TITLE: CABINET FOUNDATION
3368 SERIES ICBN
ROADSIDE ELECTRONICS