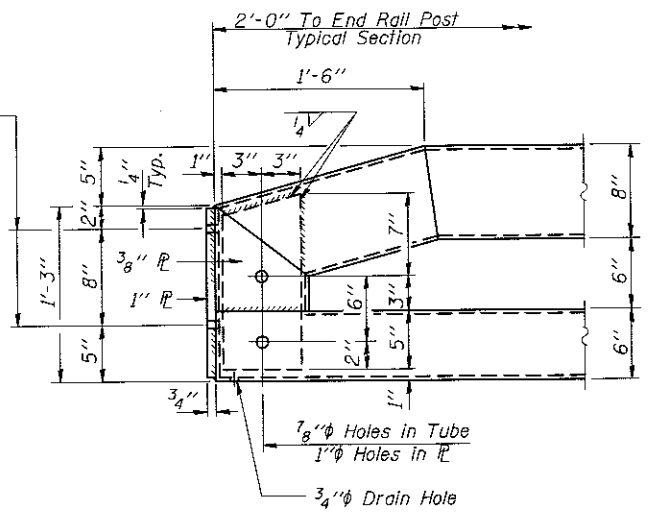


1 1/8"  $\phi$  Holes for 1"  $\phi$  x 4" Round Head Bolts. Provide 2 flat washers & locknuts for guardrail connection shown on Std. BLR 27.



**END OF RAIL DETAILS**  
**DEPARTURE END**  
(NW Corner)

**FEHR GRAHAM**  
ENGINEERING & ENVIRONMENTAL  
ILLINOIS DESIGN FIRM NO. 184-003525

ILLINOIS  
IOWA  
WISCONSIN

OWNER/DEVELOPER:  
GRUNDY COUNTY HWY. DEPT.  
245 NORTH ILLINOIS ROUTE 47  
MORRIS, IL 60450

PROJECT AND LOCATION:  
SECTION 16-00159-00-BR  
C.H. C41/GRAND RIDGE ROAD  
PROJECT YQ35(110)

DESIGNED: ARK  
CHECKED: GJB  
DRAWN: MMY  
CHECKED: ARK-MCB

REVISIONS		
REV. NO.	DESCRIPTION	DATE
1	Rail Spacing	7/23/18

DRAWING:  
STEEL BRIDGE RAIL, TYPE SM (SPECIAL)  
RAIL POST SPACING  
STRUCTURE NUMBER 032-3211  
16-096-15-rail.dgn

JOB NUMBER:  
16-096

SHEET NUMBER  
21 of 28