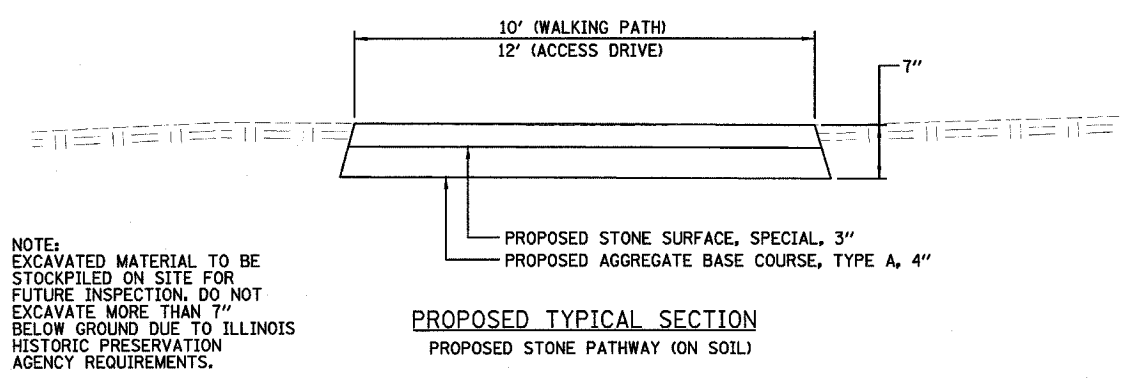
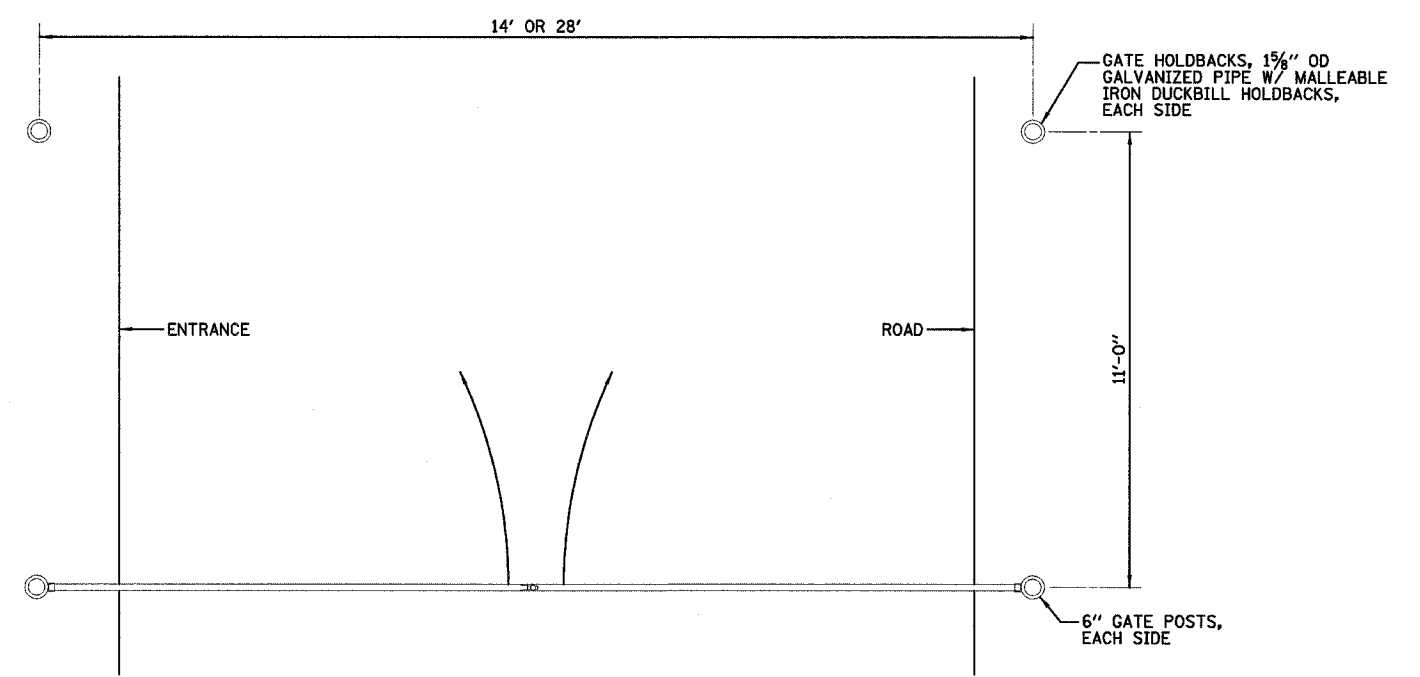
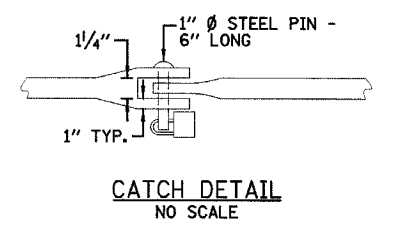
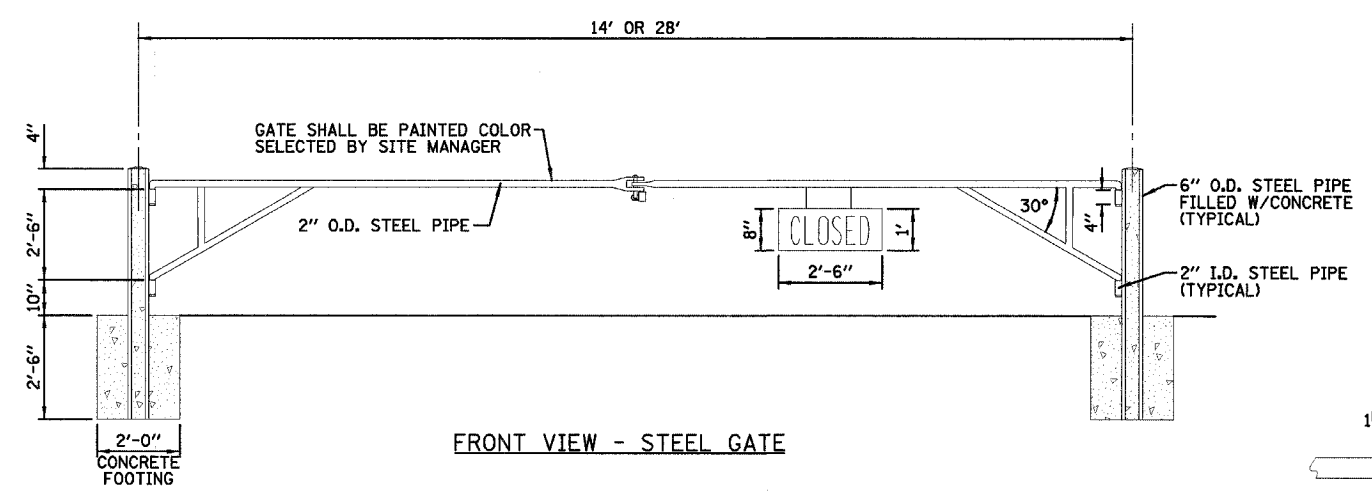
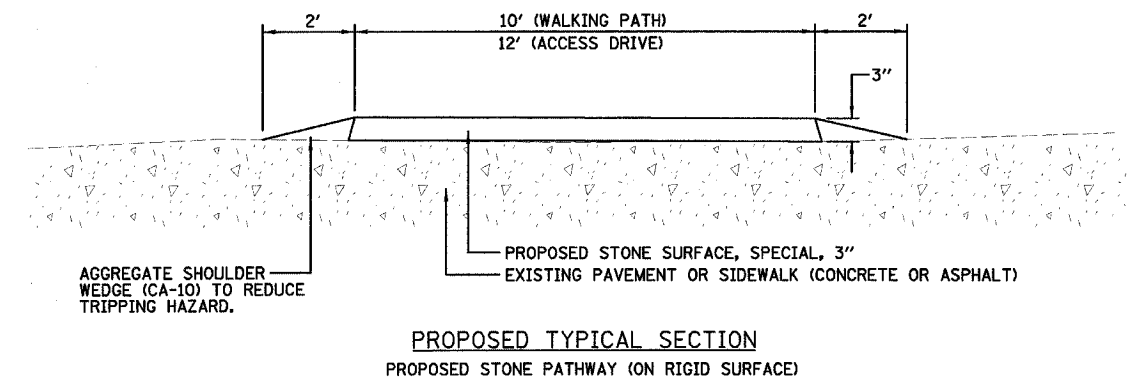


F.A. RTE.	SECTION	COUNTY	TOTAL SHEETS	SHEET NO.
		COOK	17	2
STA.		TO STA.		
FED. ROAD DIST. NO.	ILLINOIS	FED. AID PROJECT		
CONTRACT NO. 44917				



NOTE:
EXCAVATED MATERIAL TO BE STOCKPILED ON SITE FOR FUTURE INSPECTION. DO NOT EXCAVATE MORE THAN 7" BELOW GROUND DUE TO ILLINOIS HISTORIC PRESERVATION AGENCY REQUIREMENTS.



TOP VIEW - STEEL GATE

METAL GATE
NO SCALE

REVISIONS	
NAME	DATE

ILLINOIS DEPARTMENT OF TRANSPORTATION
TYPICAL SECTIONS, GATE DETAILS
AND LEGEND
IDOT / IHPA
PULLMAN STATE HISTORIC SITE

SCALE: VERT. HORIZ.
DATE: 11/08/05

DRAWN BY: DJM
CHECKED BY: PJM