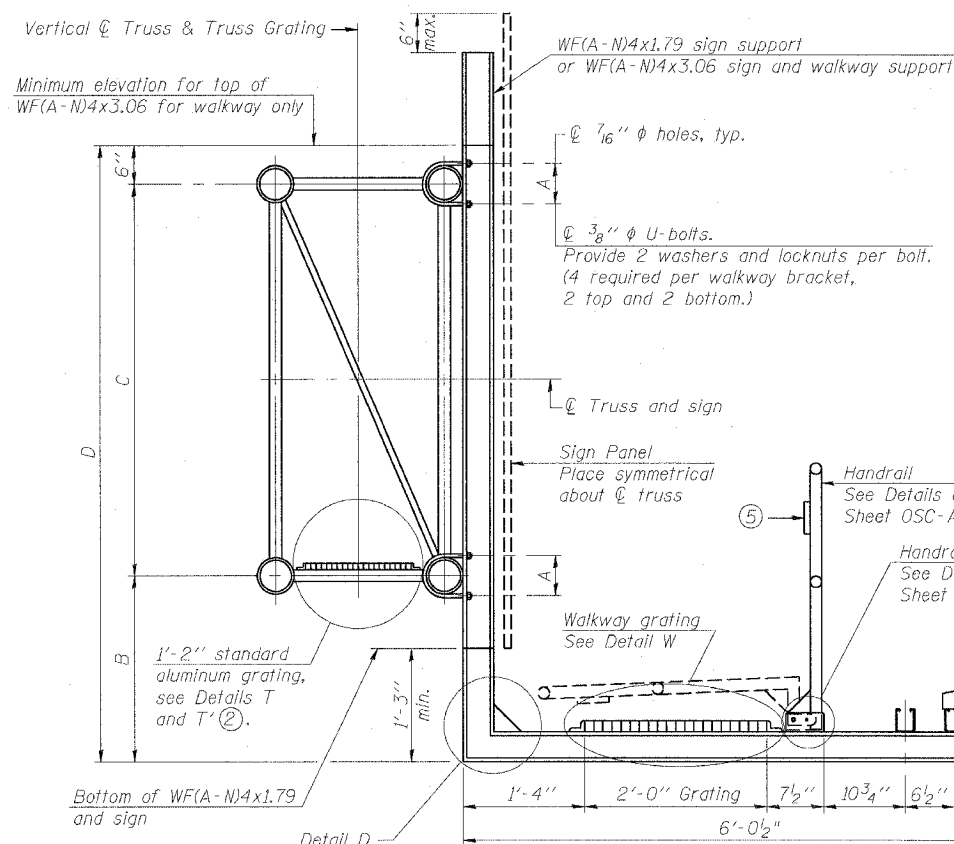
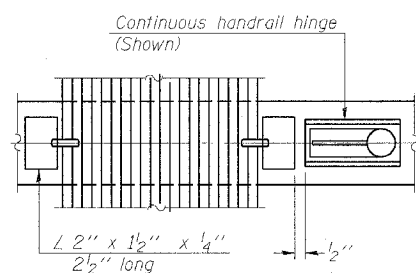


STATE OF ILLINOIS
DEPARTMENT OF TRANSPORTATION

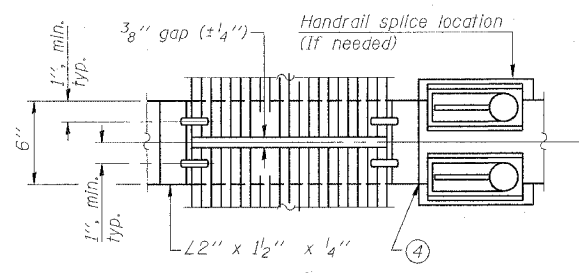
ROUTE NO.	SECTION	COUNTY	TOTAL SHEETS	SHEET NO.
F.A.I. RTE. 90/94		COOK	312	135
FED. ROAD DIST. NO. 1	ILLINOIS	FED. AID PROJECT		
• (1915,15 & 2021-922 P1.1) R-1				



SECTION B-B

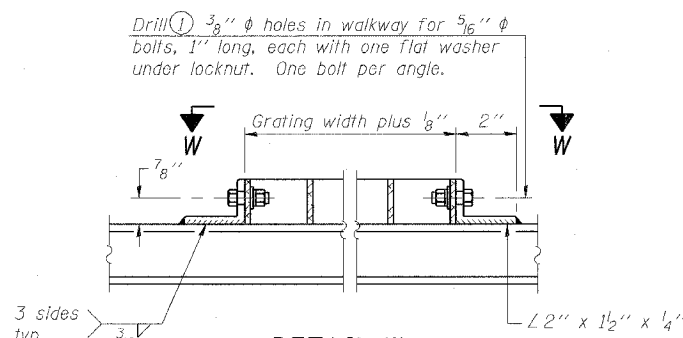


(CONTINUOUS WALKWAY GRATING)

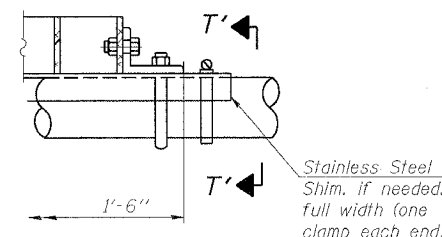


(AT WALKWAY GRATING SPLICE)

SECTION W-W

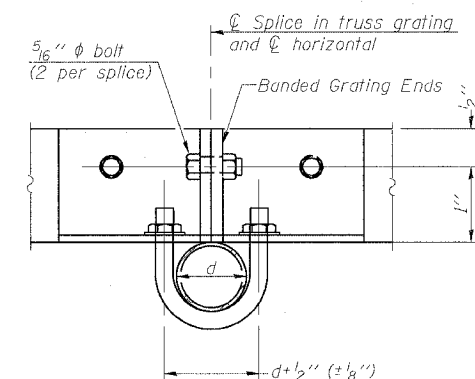


DETAIL W
(Walkway grating)

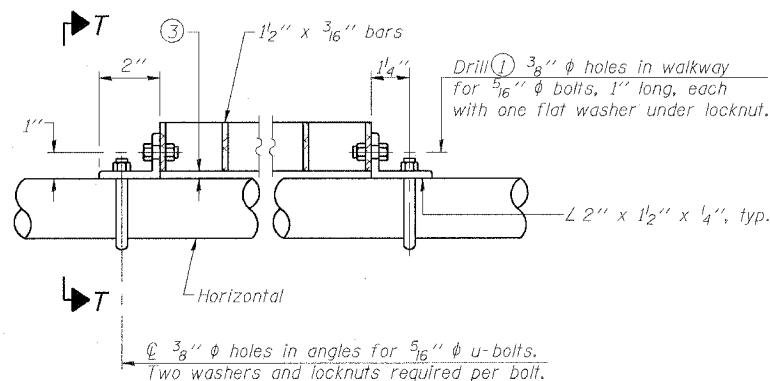


DETAIL T'
(Truss grating splice)

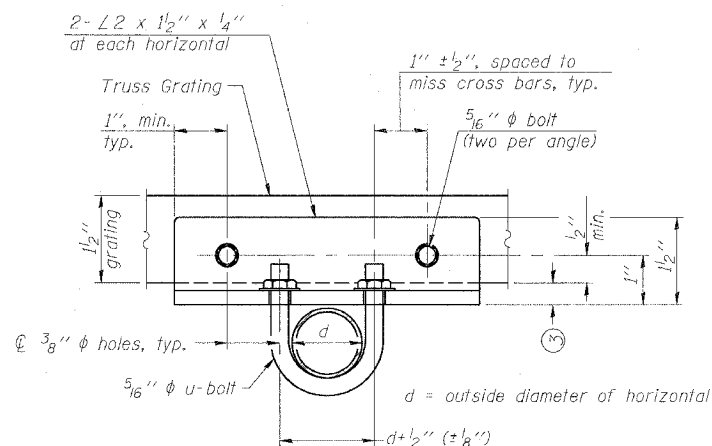
Details not shown same as Detail T. Alternate materials may be used subject to the Engineer's review and approval.



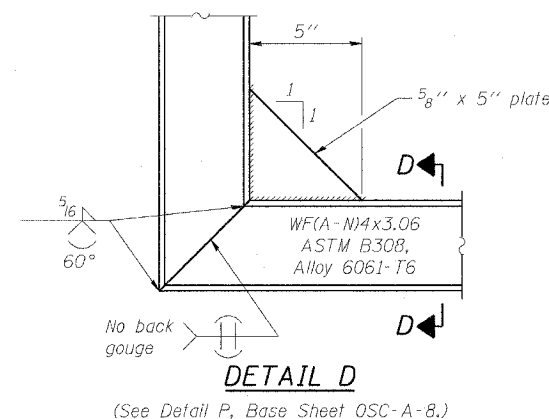
SECTION T'-T'



DETAIL T
(Truss grating at horizontal)

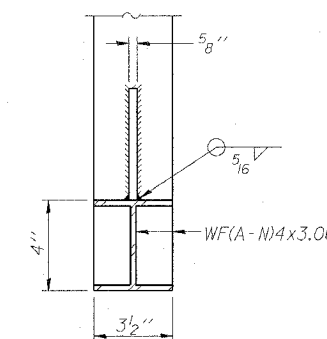


SECTION T-T



DETAIL D

(See Detail P, Base Sheet OSC-A-8.)



SECTION D-D

NUMBER	REVISION	DATE

DESIGNED	- JSS
CHECKED	- RDP
DRAWN	- JSS
CHECKED	- RDP

EXAMINED	20
PASSED	ENGINEER OF STRUCTURAL SERVICES
	ENGINEER OF BRIDGES AND STRUCTURES

OSC-A-7

1-7-05

- Drilling holes in grating may be done in shop or field, based on Contractor's preference and subject to accurate alignment.
- When truss grating must be spliced, use suggested detail or other methods subject to the Engineer's review and approval. Locate splice to avoid interference between cross bars and bolt locations.
- Tube to grating gap may vary from 0 to 1/2", max. to align walkway, allow for camber, etc.
- If Handrail Joint present, weld angle to WF(A-N)4 and 1/4" extension bars. (See Base Sheet OSC-A-8)
- 1/8" x 1/2" x 2" welded to handrail posts to protect locations that contact grating.

Structure Number	Station	A	B	C	D
IC0161094L059.2	4396+00.00	7 1/2"	1'-9"	7'-0"	9'-3"

CANTILEVER SIGN STRUCTURES
WALKWAY DETAILS
ALUMINUM TRUSS & STEEL POST

F.A.I. 90/94 (DAN RYAN EXPRESSWAY)
63RD STREET TO GARFIELD BLVD (NB LOCAL LANES)
PROPOSED IMPROVEMENT
63RD STREET TO GARFIELD BLVD

OSS-8

6/27/2006 11:06:05 AM