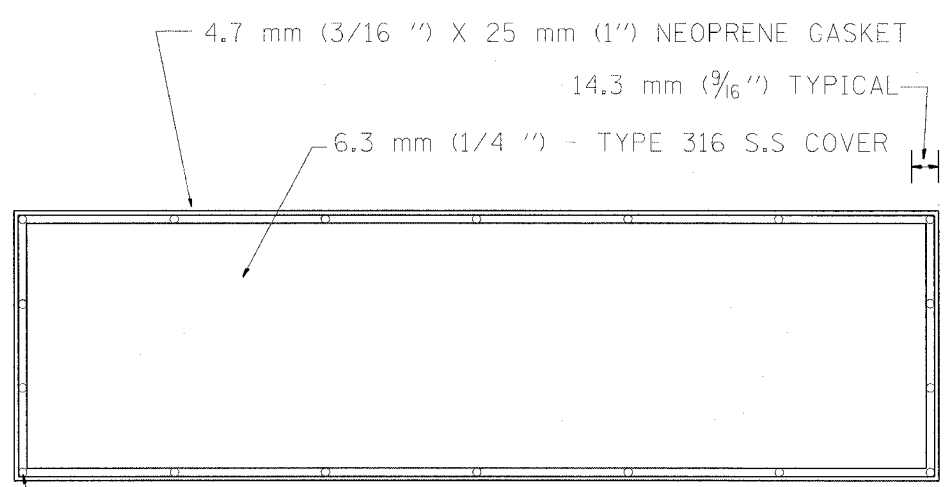


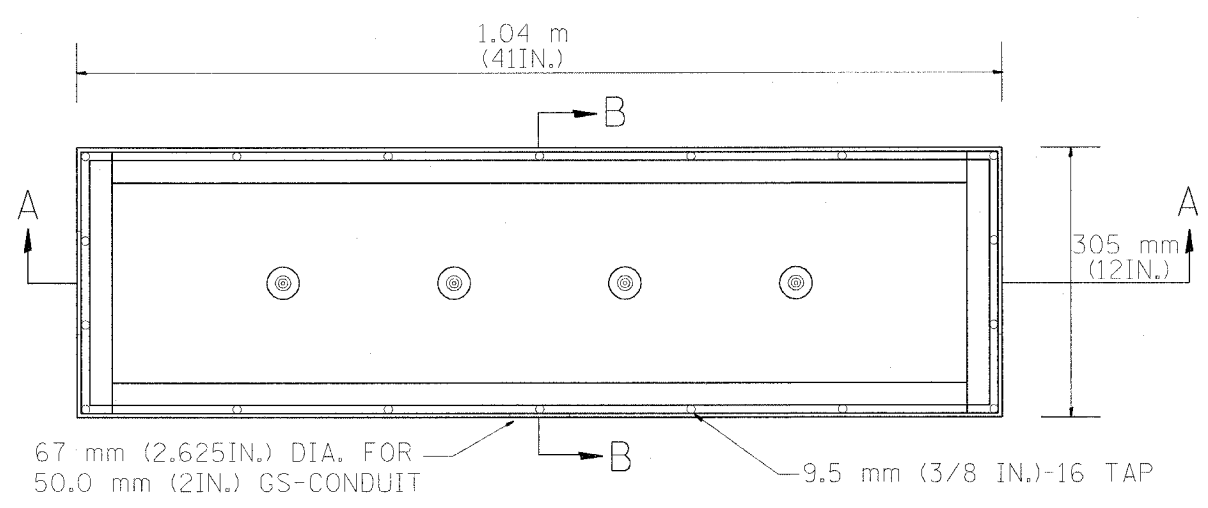
F.A.I. RTE.	SECTION	COUNTY	TOTAL SHEETS	SHEET NO.
90/94		COOK	312	194
STA.		TO STA.		
FED. ROAD DIST. NO. 1		ILLINOIS FED. AID PROJECT		
60A62		• (1919.15, 2021-922 PT1 & PT2) R-1		



DRILL AND COUNTERSINK TOP OF COVER FOR  
9.5 mm (3/8 inch) 16 X 19 mm (3/4 inch)  
FLAT HEAD STAINLESS STEEL SLOTTED SCREWS

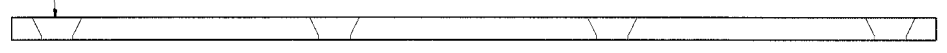
BACK VIEW

STAINLESS STEEL COVER WITH NEOPRENE GASKET



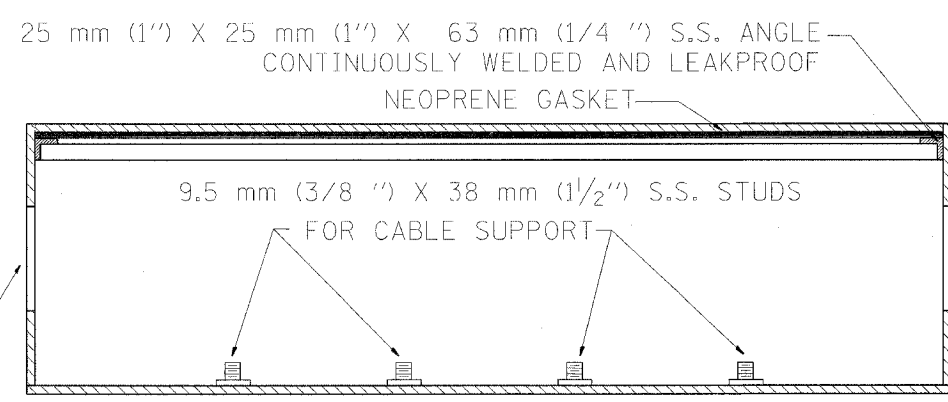
TOP VIEW

STAINLESS STEEL JUNCTION BOX TYPE "J"

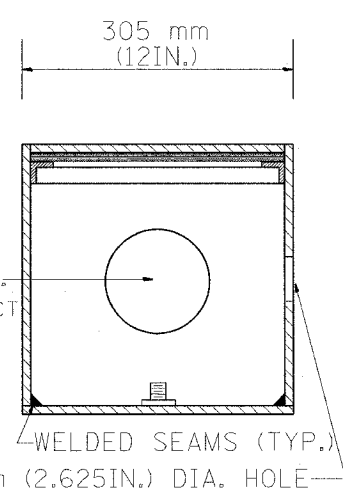


SIDE VIEW

STAINLESS STEEL COVER



SIDE VIEW SECTION A-A



SIDE VIEW SECTION B-B

NOTE:  
JUNCTION BOX TO BE CONSTRUCTED OF  
6.3 mm (1/4 IN.) TYPE 316 STAINLESS STEEL  
ALL WELDS SHALL BE CONTINUOUS AND LEAKPROOF  
ALL COVERS SHALL BE UNIVERSAL IN FIT.

BARRIER WALL SHALL BE GAPPED A MINIMUM OF 4.57 m (15ft.) FOR PROPER PLACEMENT OF JUNCTION BOX TYPE "J" AND FOR A SMOOTH TRANSITION OF 100 mm (4IN.) PVC SURVEILLANCE DUCT(S) FROM BARRIER WALL FOOTER INTO JUNCTION BOX.



REVISIONS	
NAME	DATE

ILLINOIS DEPARTMENT OF TRANSPORTATION  
F.A.I. 90/94 (DAN RYAN EXPRESSWAY)  
63RD STREET TO GARFIELD BLVD (NB LOCAL LANES)  
CONCRETE  
BARRIER WALL JUNCTION BOX  
TYPE "J"

SCALE: NOT TO SCALE  
DATE: June 9, 2006  
DRAWN BY: HAR  
CHECKED BY: JPC

EI-109

p:\p4\468\veltech\8-chirs 18 & 19\contract 1803\1803\18030202.dwg