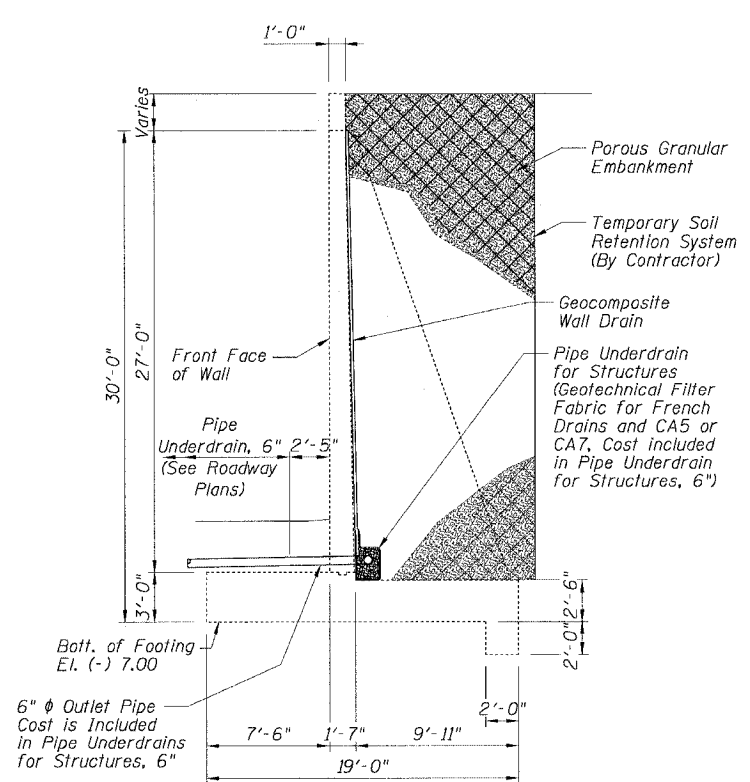
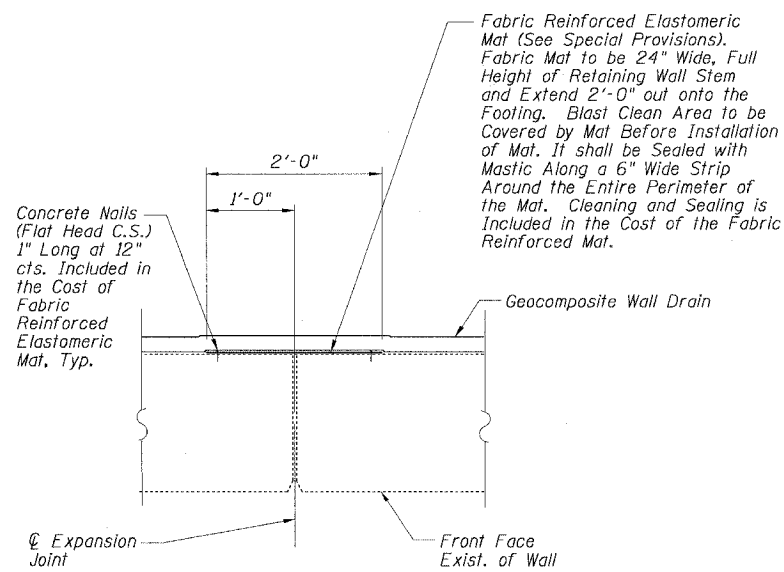


STATE OF ILLINOIS
DEPARTMENT OF TRANSPORTATION

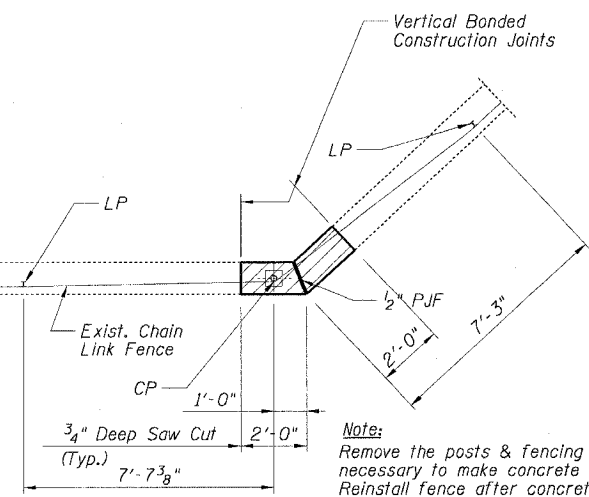
F.A.I. RTE.	SECTION	COUNTY	TOTAL SHEETS	SHEET NO.
90/94		COOK	312	241
STA. 6063+25.00 TO STA. 6069+25.00		ILLINOIS FED. AID PROJECT		
60A62		(1919.15, 2021-922 PT1 & PT2) R-1		



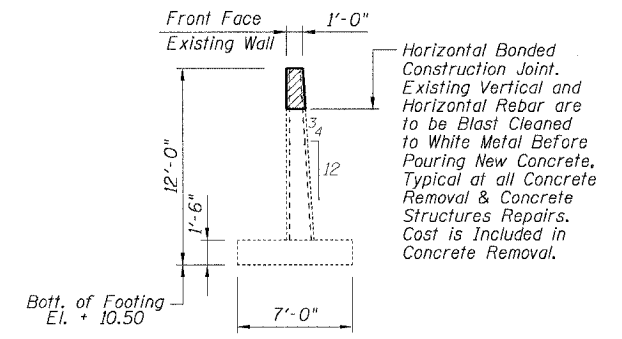
SECTION A-A



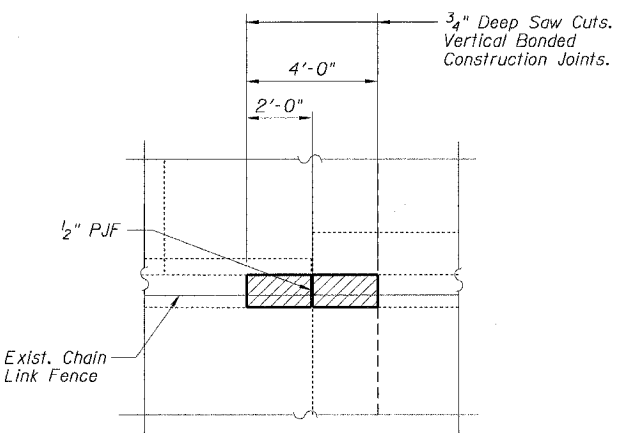
SECTION C-C



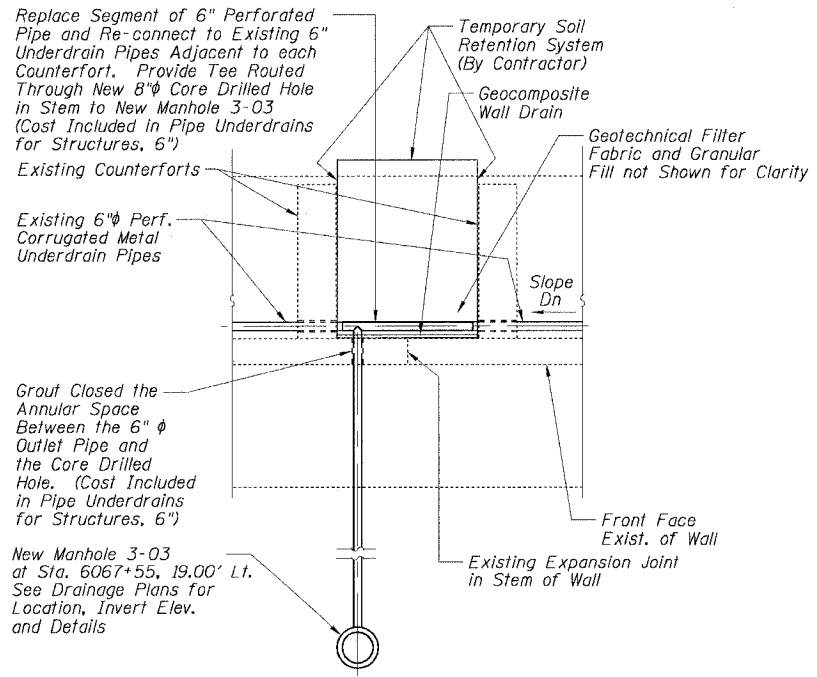
DETAIL 1



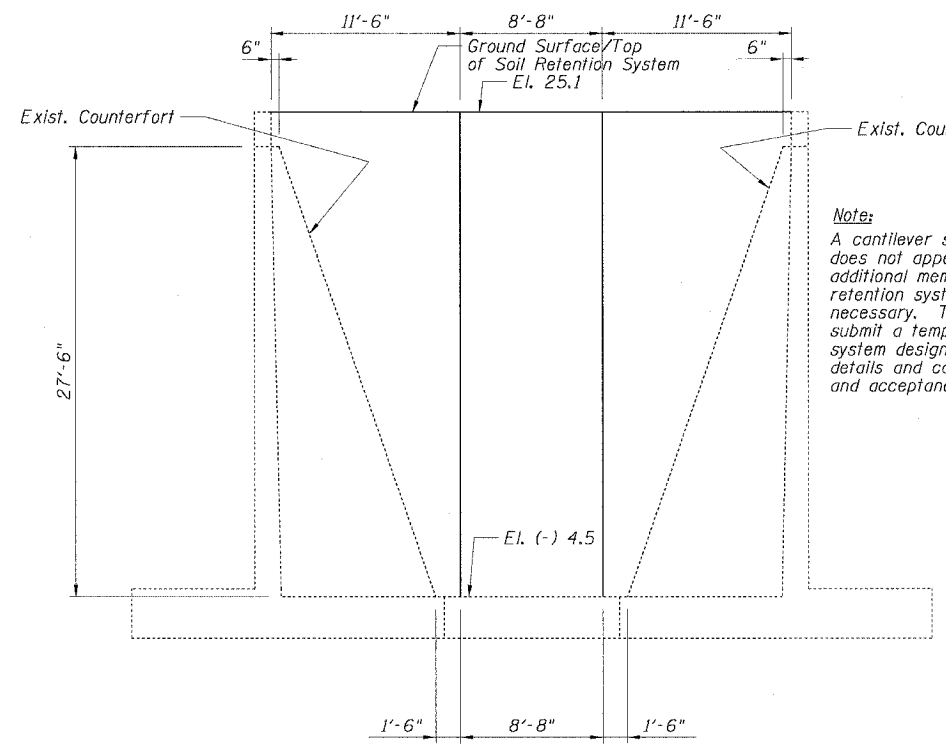
SECTION D-D



DETAIL 2



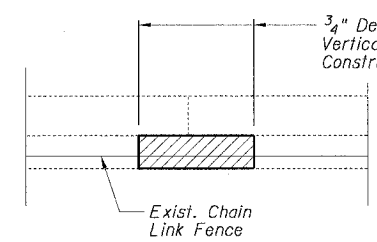
SECTION B-B



DEVELOPED ELEVATION
TEMPORARY SOIL RETENTION SYSTEM

Note:
Remove the posts & fencing as necessary to make concrete repairs. Reinstall fence after concrete repair. Fencing shall be reinstalled by the end of each work day. Removal & reinstallation of fencing is considered included with Concrete Removal and will not be measured for payment. Typical all locations along top of wall. The cost for structure excavation required for concrete removal locations along the top of the wall shall be included with the cost for Concrete Removal.

Note:
A cantilever sheet piling design does not appear feasible and additional members or other retention systems may be necessary. The Contractor shall submit a temporary soil retention system design including plan details and calculations for review and acceptance by the Engineer.



DETAIL 3

BILL OF MATERIAL

Concrete Removal	Cu Yd	1
Concrete Structures	Cu Yd	1
Porous Granular Embankment	Cu Yd	106
Temporary Soil Retention System	Sq Ft	645
Structure Excavation	Cu Yd	106
Pipe Underdrains for Structures, 6"	Foot	8
Geocomposite Wall Drain	Sq Yd	28
Fabric Reinforced Elastomeric Mat	Sq Ft	63
Protective Coat	Sq Yd	13

Sheet C-4 OF 4

REVISIONS	
NAME	DATE

ILLINOIS DEPARTMENT OF TRANSPORTATION
F.A.I. 90/94 (DAN RYAN EXPRESSWAY)
63RD STREET TO GARFIELD BLVD (NB LOCAL LANES)
WALL SECTIONS AND DETAILS
ENTRANCE RAMP FROM SKYWAY RETAINING WALL
65th STREET TO R.I.R.R.
SCALE: None
DATE: June 9, 2006
DRAWN BY: DAS
CHECKED BY: MJP

- Notes:**
- For location of Sections A-A, B-B and C-C, see Sheet C-1.
 - For location of Section D-D, see Sheet C-3.