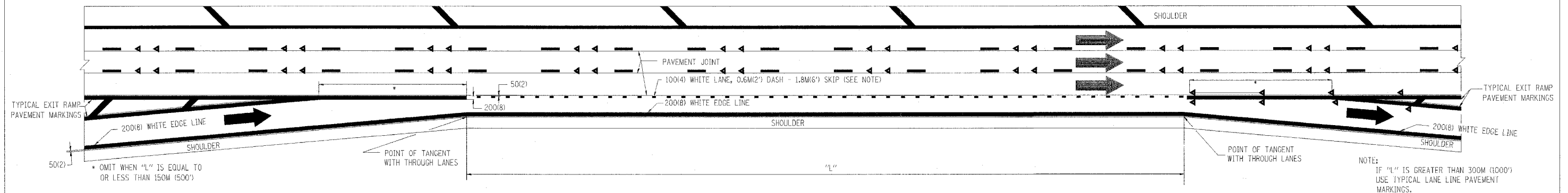
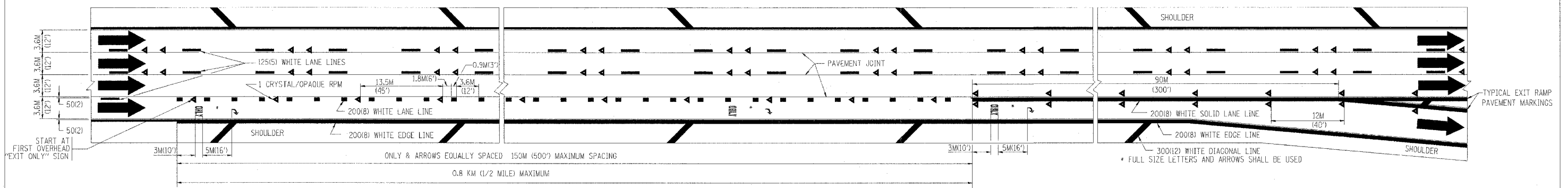


F.A. RITE	SECTION	COUNTY	TOTAL SHEETS	SHEET NO
9094	*	COOK	312	252
STA.		TO STA.		
FED. ROAD DIST. NO. 1	ILLINOIS	FED. AID PROJECT		

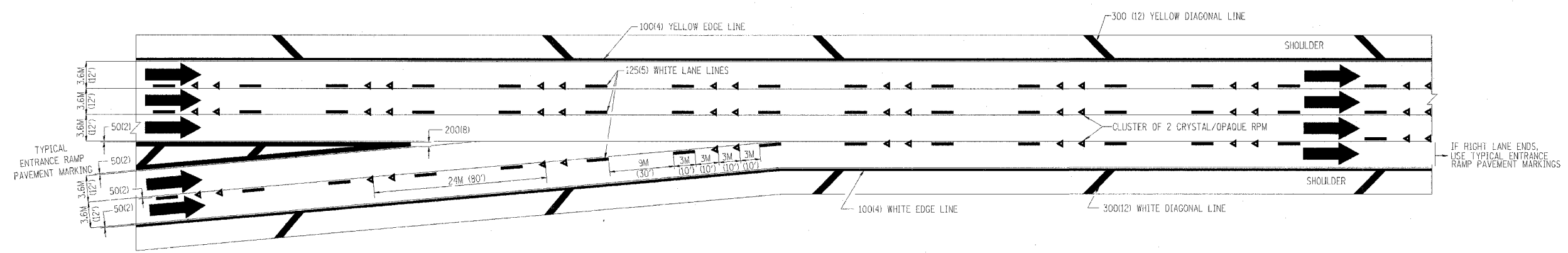
\*(1918 15, 2021-922 PT1 & PT2) R-1



**TYPICAL ENTRANCE/EXIT RAMP COMBINATION PAVEMENT MARKINGS**



**TYPICAL EXIT ONLY LANE PAVEMENT MARKINGS**



**TYPICAL TWO LANE ENTRANCE RAMP PAVEMENT MARKINGS**

REVISIONS	
NAME	DATE
DWS	1/90
DWS	5/91

ILLINOIS DEPARTMENT OF TRANSPORTATION

**MULTI-LANE FREEWAY  
PAVEMENT MARKING  
DETAILS**

SCALE: NONE  
DATE: 10/18/2002

DRAWN BY C.A.D.D.  
CHECKED BY  
TC12 SHEET 2 OF 2  
REVISION DATE: 01/01/96

DATE-TIME  
DGN-SPEC  
V1-TC12