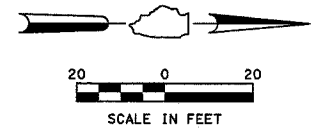


TRAFFIC SIGNAL LEGEND

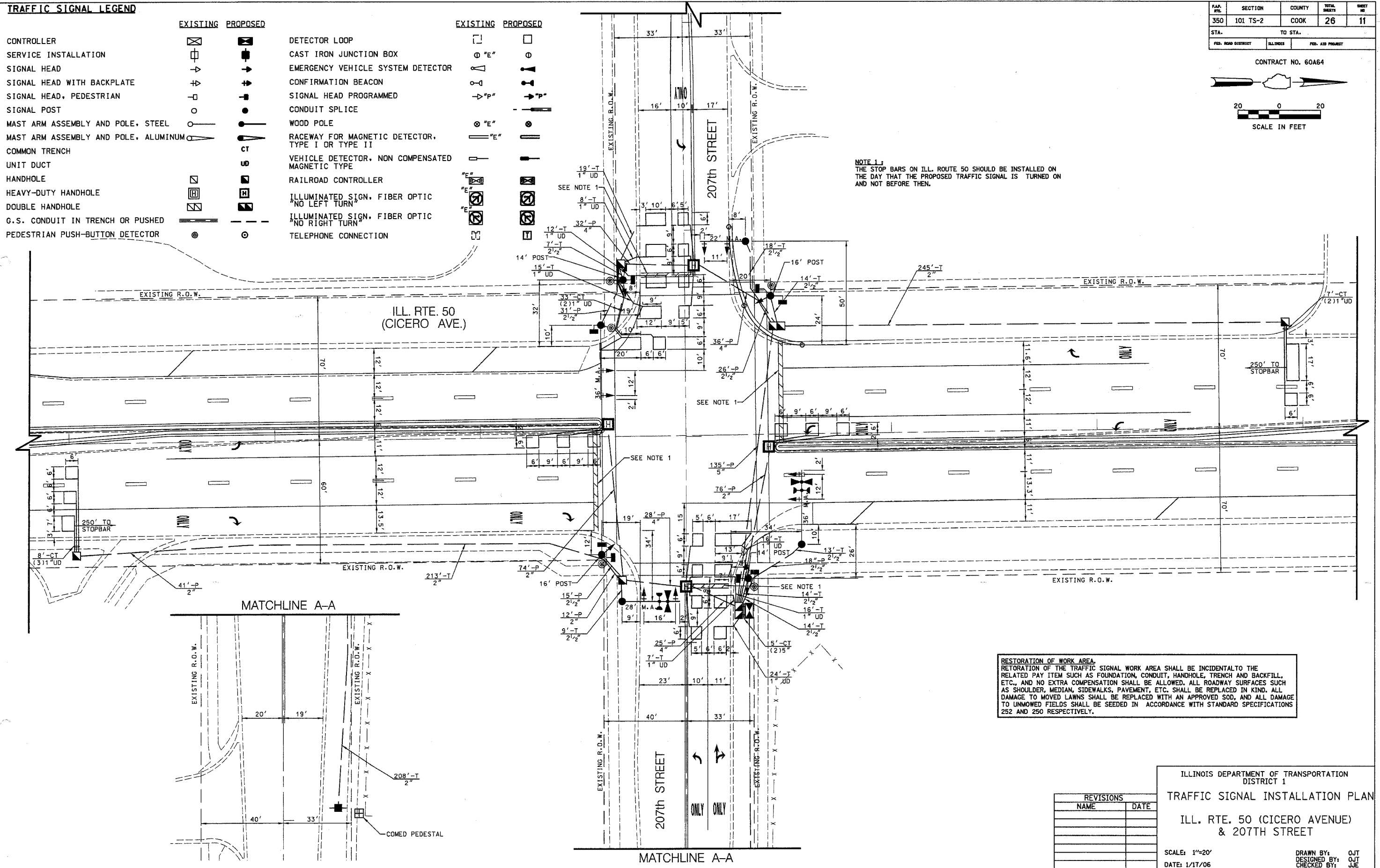
		EXISTING	PROPOSED		EXISTING	PROPOSED
CONTROLLER				DETECTOR LOOP		
SERVICE INSTALLATION				CAST IRON JUNCTION BOX		
SIGNAL HEAD				EMERGENCY VEHICLE SYSTEM DETECTOR		
SIGNAL HEAD WITH BACKPLATE				CONFIRMATION BEACON		
SIGNAL HEAD, PEDESTRIAN				SIGNAL HEAD PROGRAMMED		
SIGNAL POST				CONDUIT SPLICE		
MAST ARM ASSEMBLY AND POLE, STEEL				WOOD POLE		
MAST ARM ASSEMBLY AND POLE, ALUMINUM				RACEWAY FOR MAGNETIC DETECTOR, TYPE I OR TYPE II		
COMMON TRENCH				VEHICLE DETECTOR, NON COMPENSATED MAGNETIC TYPE		
UNIT DUCT				RAILROAD CONTROLLER		
HANDHOLE				ILLUMINATED SIGN, FIBER OPTIC "NO LEFT TURN"		
HEAVY-DUTY HANDHOLE				ILLUMINATED SIGN, FIBER OPTIC "NO RIGHT TURN"		
DOUBLE HANDHOLE				TELEPHONE CONNECTION		
G.S. CONDUIT IN TRENCH OR PUSHED						
PEDESTRIAN PUSH-BUTTON DETECTOR						

PAP. NO.	SECTION	COUNTY	TOTAL SHEETS	SHEET NO.
350	101 TS-2	COOK	26	11
STA. 101+00.00		TO STA. 101+00.00		
FED. ROAD DISTRICT		ILLINOIS	FED. AID PROJECT	

CONTRACT NO. 60A64



NOTE 1:
THE STOP BARS ON ILL. ROUTE 50 SHOULD BE INSTALLED ON THE DAY THAT THE PROPOSED TRAFFIC SIGNAL IS TURNED ON AND NOT BEFORE THEN.



RESTORATION OF WORK AREA.
RESTORATION OF THE TRAFFIC SIGNAL WORK AREA SHALL BE INCIDENTAL TO THE RELATED PAY ITEM SUCH AS FOUNDATION, CONDUIT, HANDHOLE, TRENCH AND BACKFILL, ETC., AND NO EXTRA COMPENSATION SHALL BE ALLOWED. ALL ROADWAY SURFACES SUCH AS SHOULDER, MEDIAN, SIDEWALKS, PAVEMENT, ETC. SHALL BE REPLACED IN KIND. ALL DAMAGE TO MOVED LAWNS SHALL BE REPLACED WITH AN APPROVED SOD, AND ALL DAMAGE TO UNMOWED FIELDS SHALL BE SEEDED IN ACCORDANCE WITH STANDARD SPECIFICATIONS 252 AND 250 RESPECTIVELY.

REVISIONS	
NAME	DATE

ILLINOIS DEPARTMENT OF TRANSPORTATION
DISTRICT 1
TRAFFIC SIGNAL INSTALLATION PLAN
ILL. RTE. 50 (CICERO AVENUE)
& 207TH STREET

SCALE: 1"=20'
DATE: 1/17/06

DRAWN BY: QJT
DESIGNED BY: QJT
CHECKED BY: JJE