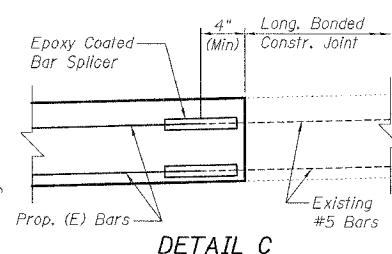
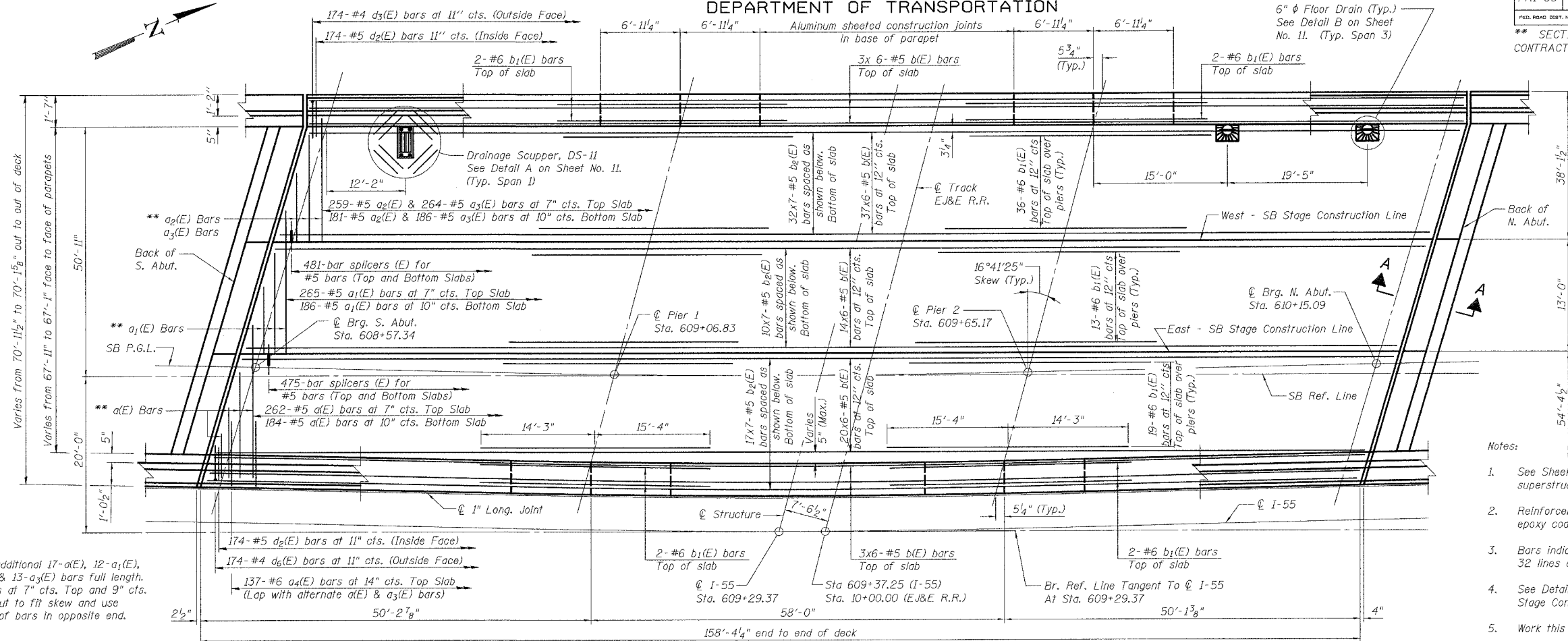


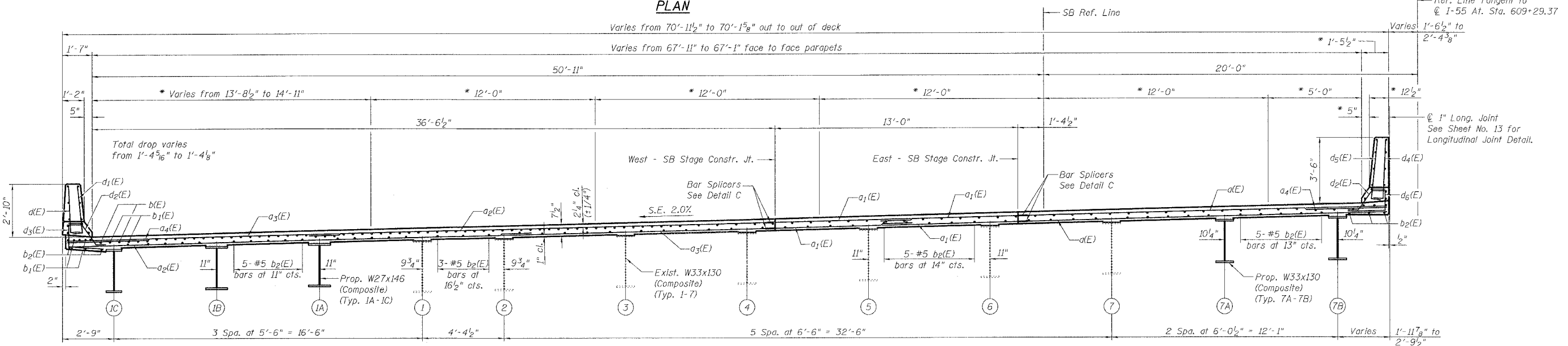
STATE OF ILLINOIS
DEPARTMENT OF TRANSPORTATION

| | | | | | |
|-----------------------|----------|-------------------|--------------|-----------|-----------|
| ROUTE NO. | SECTION | COUNTY | TOTAL SHEETS | SHEET NO. | SHEET NO. |
| FAI-55 | ** | WILL | 50 | 36 | 15 SHEETS |
| FED. ROAD DIST. NO. 7 | ILLINOIS | FED. AID PROJECT- | | | |

** SECTION 2005-063 I
CONTRACT NO. 60A67



** Order an additional 17-a(E), 12-a1(E), 23-a2(E), & 13-a3(E) bars full length. Space bars at 7" cts. Top and 9" cts. Bottom. Cut to fit skew and use remainder of bars in opposite end.



| | |
|----------|------------|
| DESIGNED | S.CHELBIAN |
| CHECKED | J.GRAINAWI |
| DRAWN | S.CHELBIAN |
| CHECKED | J.GRAINAWI |

Date: 5/15/2006

* Designates radial dimensions normal to I-55.

FOR INFORMATION ONLY



SB DECK PLAN AND SECTION
I-55 OVER EJ&E R.R.
FAI ROUTE 55-SEC. 2005-063 I
WILL COUNTY
STA. 609+29.37
STRUCTURE NO. 099-0019 (SB)