

F.A. RTE.	SECTION	COUNTY	TOTAL SHEETS	SHEET NO.
55	2005-062 I	WILL	72	1

STATE OF ILLINOIS  
DEPARTMENT OF TRANSPORTATION  
DIVISION OF HIGHWAYS

**PROPOSED  
HIGHWAY PLANS**

F.A.I. ROUTE 55 (INTERSTATE 55)  
SIGNING  
FROM SOUTH OF I-80 TO NORTH OF US ROUTE 52

SECTION: 2005-062 I  
PROJECT NO.: *IM-055-6(223)250*

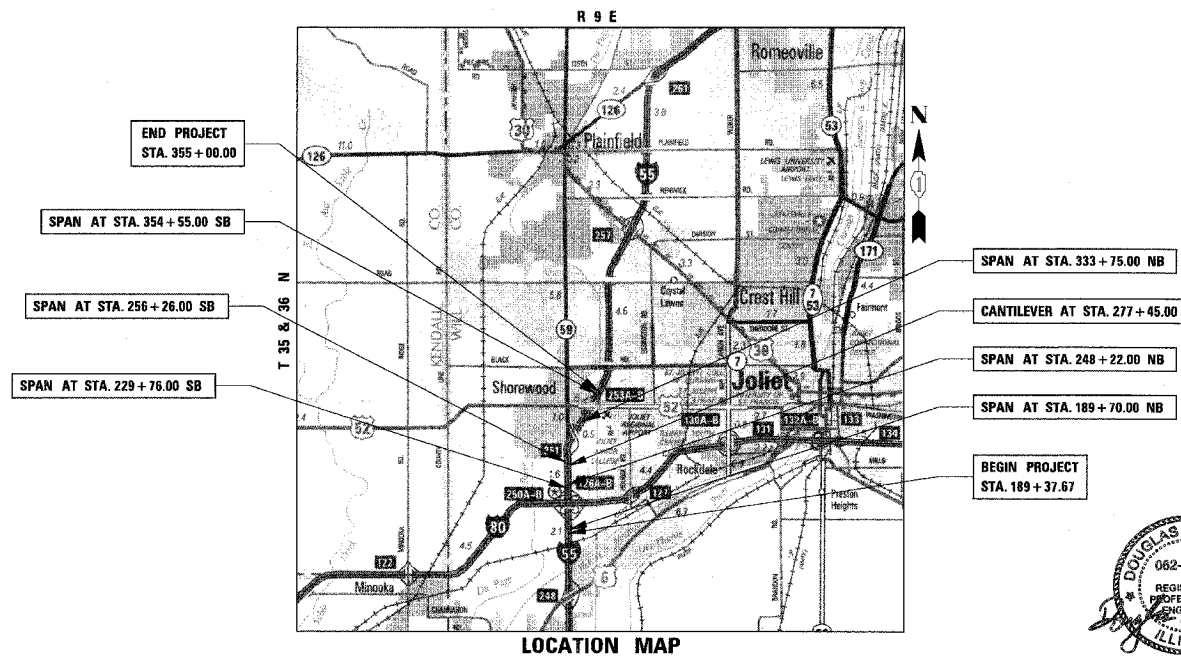
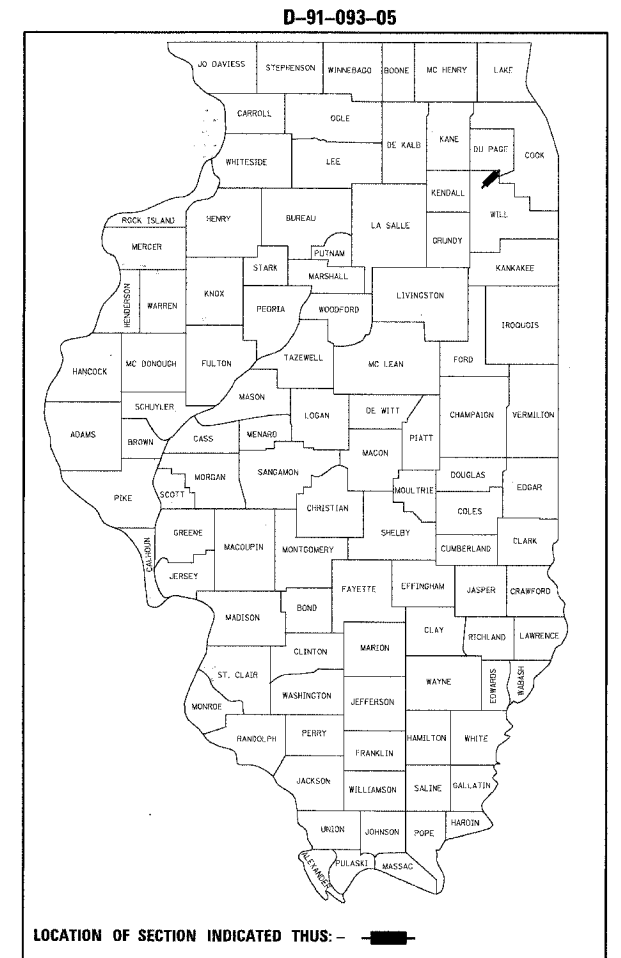
WILL COUNTY  
C-91-095-06

FOR INDEX OF SHEETS, SEE SHEET NO. 2

**TRAFFIC DATA**

ADT (2030) :  
US 6 to I-80 = 64,000  
I-80 to IL 59 = 83,000  
IL 59 to U.S. 52 = 56,000  
U.S. 52 to U.S. 30 = 60,000  
POSTED SPEED :  
I-55 = 65 mph  
DESIGN DESIGNATION :  
N/A

MICROFILMED \_\_\_\_\_  
REEL NUMBER \_\_\_\_\_  
AWARDED \_\_\_\_\_  
RESIDENT ENGINEER \_\_\_\_\_  
AS BUILT CHANGES WERE MADE  
ON THE FOLLOWING SHEETS \_\_\_\_\_



DOUGLAS D. HANSEN, P.E.  
IL. REG. NO. 062-045293  
EXPIRES: 11/30/2007  
DATE: 5/9/06

**TENG**  
TENG & ASSOCIATES, INC.  
ENGINEERS/ARCHITECTS/PLANNERS  
205 N. MICHIGAN AVE. CHICAGO, IL 60601

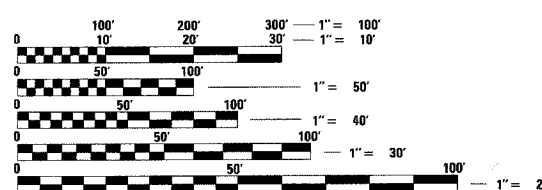
STATE OF ILLINOIS  
DEPARTMENT OF TRANSPORTATION  
DIVISION OF HIGHWAYS

SUBMITTED *May 12 20 06*  
*Diane M. G. Keefe/CD*  
DEPUTY DIRECTOR OF HIGHWAYS, REGION ENGINEER

*June 30, 20 06*  
*Mike Hine/ED*  
ENGINEER OF DESIGN AND ENVIRONMENT

*June 30, 20 06*  
*Michael R. Sew/PE/ED*  
DIRECTOR OF HIGHWAYS, CHIEF ENGINEER

**PRINTED BY THE AUTHORITY  
OF THE STATE OF ILLINOIS**



FULL SIZE PLANS HAVE BEEN PREPARED USING STANDARD ENGINEERING SCALES. REDUCED SIZED PLANS WILL NOT CONFORM TO STANDARD SCALES. IN MAKING MEASUREMENTS ON REDUCED PLANS, THE ABOVE SCALES MAY BE USED.

J.U.L.I.E.  
JOINT UTILITY LOCATION INFORMATION FOR EXCAVATION  
1-800-892-0123

CONTRACT NO. 60A70

DISTRICT 1 - DESIGN /CONSULTANT SERVICES  
PROJECT MANAGER: RAJENDRA SHAW 847-705-4555