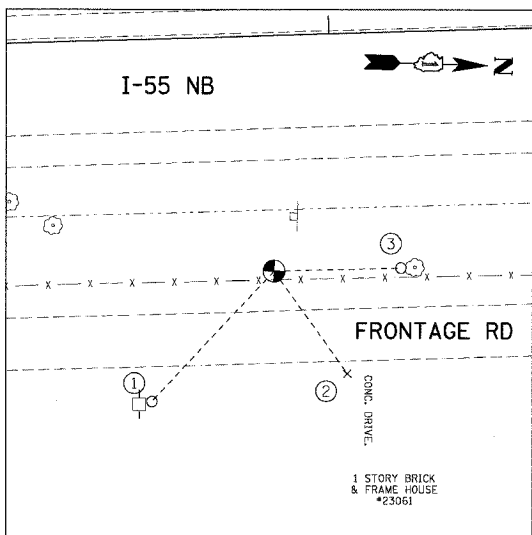
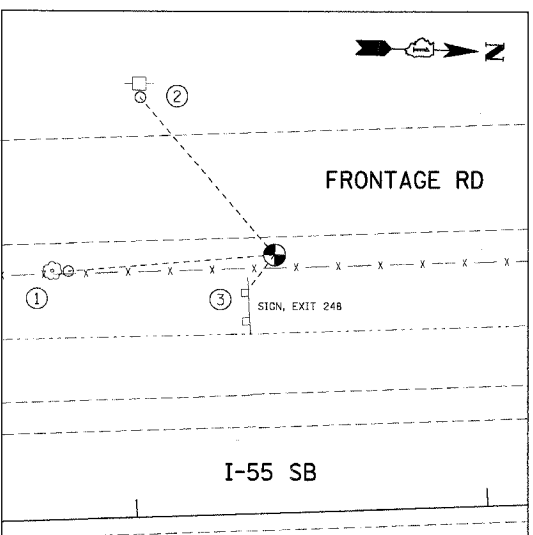


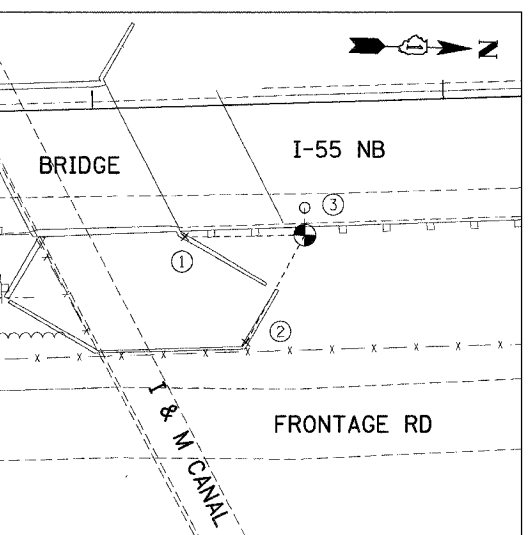
F.A.I. RTE.	SECTION	COUNTY	TOTAL SHEETS	SHEET NO.
55	2005-062 I	WILL	72	10
STA.		TO STA.		
FED. ROAD DIST. NO.		ILLINOIS FED. AID PROJECT		



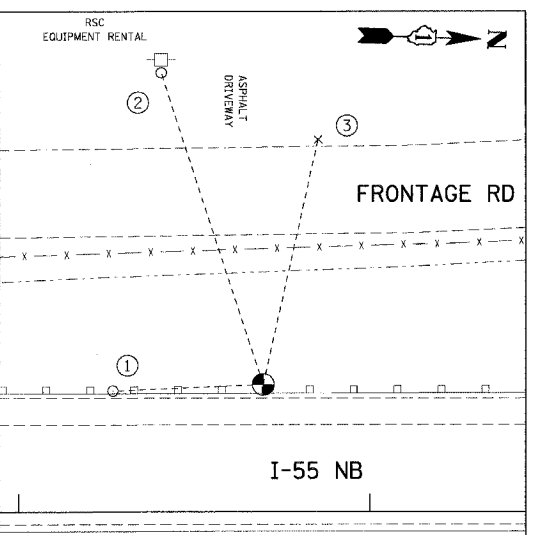
**TP1**  
 (N 1747171.665, E 1021895.312, ELEV. 537.694)  
 ① PK NAIL ON WEST FACE OF POWER POLE, 70.70'  
 ② CUT CROSS IN CONC. DRIVEWAY, 52.12'  
 ③ PK NAIL ON SOUTH FACE OF 12" TREE, 36.18'



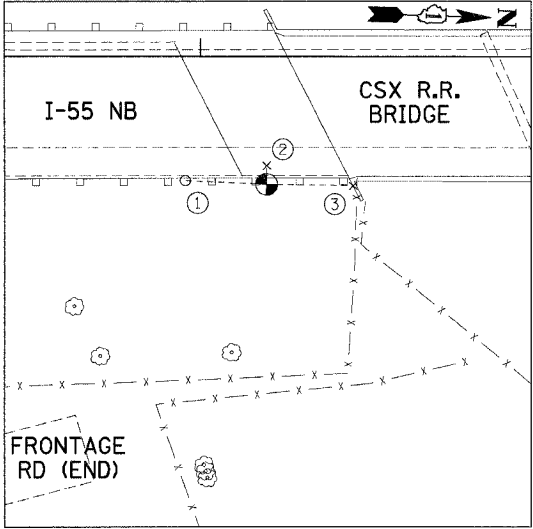
**TP2**  
 (N 1748118.259, E 1021602.430, ELEV. 527.049)  
 ① PK NAIL ON EAST FACE OF 10" TREE, 44.45'  
 ② PK NAIL ON WEST FACE OF POWER POLE, 59.00'  
 ③ NEAREST CORNER OF SIGN POST, 12.30'



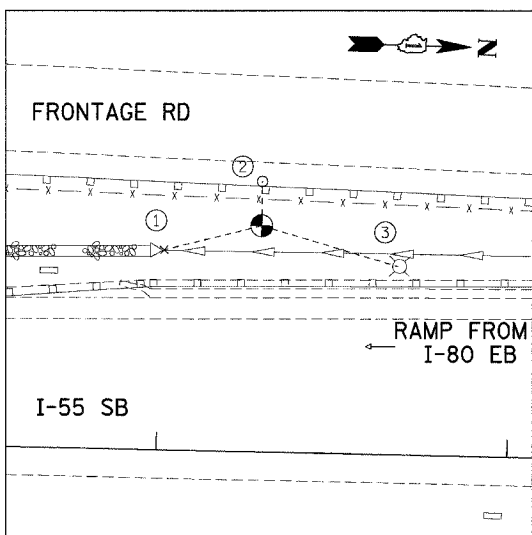
**TP3**  
 (N 1749143.319, E 1021747.490, ELEV. 536.290)  
 ① CUT CROSS ON TOP OF CONC. WALL, 34.20'  
 ② CUT CROSS ON TOP OF CONC. WALL, 35.25'  
 ③ PK NAIL IN ASPH. SHOULDER, 7.86'



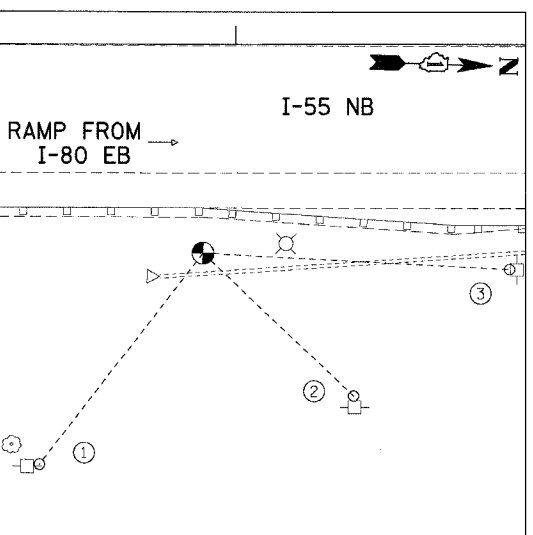
**TP4**  
 (N 1750146.468, E 1021525.206, ELEV. 558.007)  
 ① PK NAIL IN ASPHALT, 42.86'  
 ② PK NAIL ON EAST FACE OF POWER POLE, 93.72'  
 ③ CUT CROSS ON TOP OF CONC. CURB, 71.98'



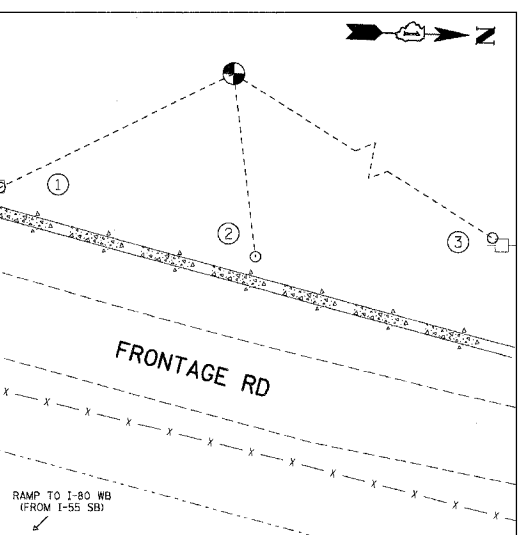
**TP5**  
 (N 1751199.973, E 1021668.568, ELEV. 577.182)  
 ① PK NAIL IN ASPHALT, 23.15'  
 ② CUT CROSS IN BRIDGE DECK, 5.35'  
 ③ CUT CROSS ON TOP OF WINGWALL, 24.65'



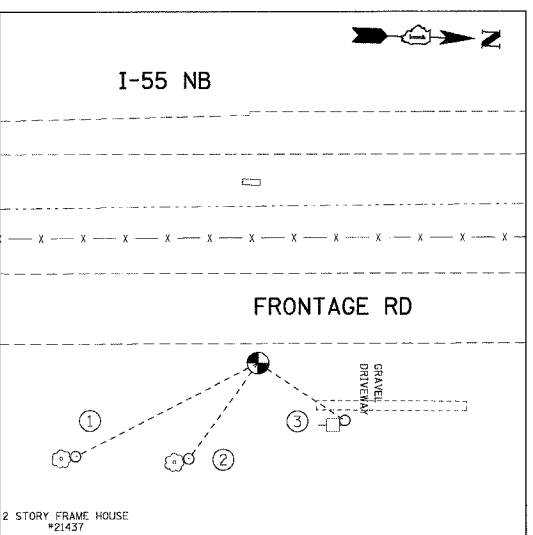
**TP6**  
 (N 1753305.294, E 1021429.772, ELEV. 573.834)  
 ① CUT CROSS ON TOP OF RCP 40", 28.60'  
 ② PK NAIL IN ASPHALT, 12.50'  
 ③ SOUTH FACE OF LIGHT POLE, 40.50'



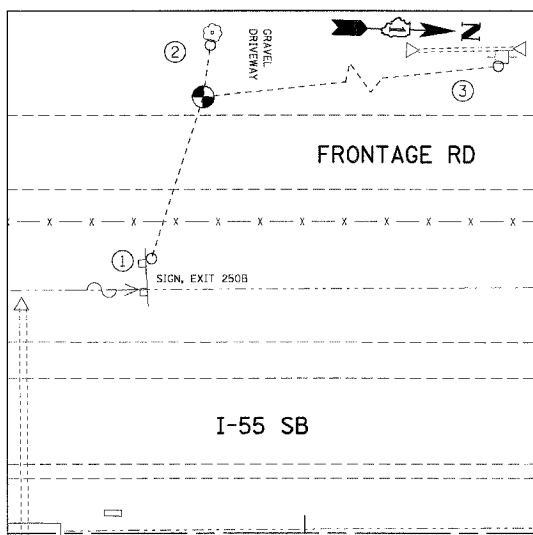
**TP7**  
 (N 1755270.636, E 1021567.644, ELEV. 585.682)  
 ① PK NAIL ON NORTH FACE OF POWER POLE, 76.45'  
 ② PK NAIL ON WEST FACE OF POWER POLE, 59.20'  
 ③ PK NAIL ON SOUTH FACE OF POWER POLE, 87.50'



**TP8**  
 (N 1757027.413, E 1021155.818, ELEV. 595.624)  
 ① PK NAIL ON NORTH FACE OF POWER POLE, 74.05'  
 ② WILLTEL STAND, PIPE, 52.34'  
 ③ PK NAIL ON SOUTH FACE OF POWER POLE, 139.20'



**TP9**  
 (N 1758081.471, E 1021528.564, ELEV. 589.434)  
 ① PK NAIL ON NORTH FACE OF 14" TREE, 58.37"  
 ② PK NAIL ON NORTH FACE OF 24" TREE, 33.75'  
 ③ PK NAIL ON NORTH FACE OF POWER POLE, 29.65'



**TP10**  
 (N 1759043.088, E 1021247.156, ELEV. 591.034)  
 ① NEAREST CORNER OF SIGN POST, 48.17'  
 ② PK NAIL ON EAST FACE OF 26" TREE, 14.90'  
 ③ PK NAIL ON EAST FACE OF POWER POLE, 161.26'

NOTE:  
 ALL CONTROL POINTS ON THIS SHEET WERE SET WITH 2" IRON ROD WITH YELLOW CAP

REVISIONS	
NAME	DATE

ILLINOIS DEPARTMENT OF TRANSPORTATION  
 FAI ROUTE 55 (I-80 TO U.S. 30)  
 SIGNING

**ALIGNMENT, TIES AND BENCHMARKS VI**

SCALE: N.T.S. DRAWN BY: SB  
 DATE: 05/19/06 CHECKED BY: DDH

**TENG** TENG & ASSOCIATES, INC.  
 ENGINEERS/ARCHITECTS/PLANNERS  
 CHICAGO, ILLINOIS

PLOT DATE = 05/19/06  
 PLOT SCALE = 85/DALEP  
 USER NAME = ELISERH  
 \\S01P01A02\DDN... \X0101\002\DDN... \X0101\002\DDN... \X0101\002\DDN... \X0101\002\DDN...  
 5-17-2006, 14:25:06  
 GARCIAZ SA\DOCUMENT\2235158\1\CTVIL\DDN\T827\HARE.SHT