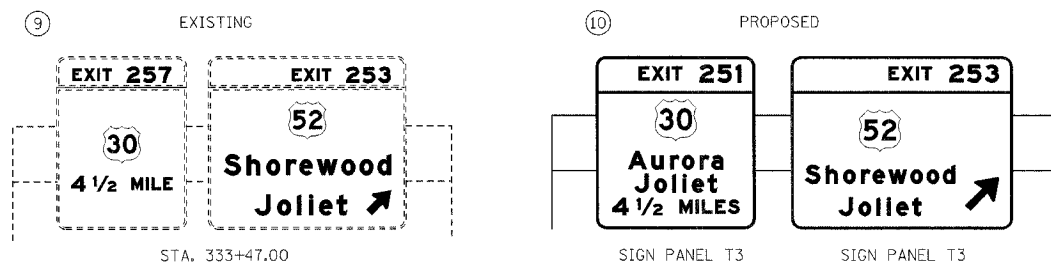
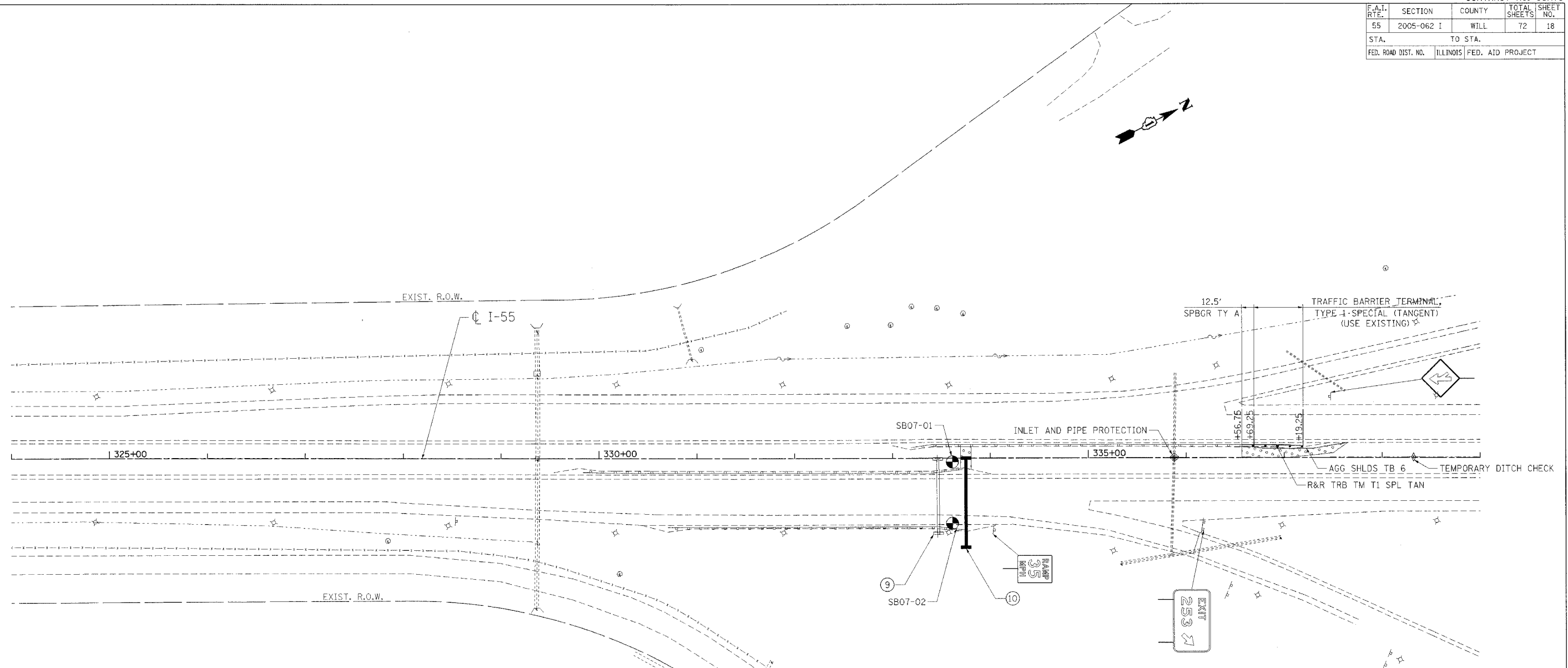


F.A.I. RTE.	SECTION	COUNTY	TOTAL SHEETS	SHEET NO.
55	2005-062 I	WILL	72	18
STA. TO STA.		ILLINOIS FED. AID PROJECT		



- ERECT OVHD SIN STR-SPAN T1A 28 FT NORTH OF EXISTING
- INSTALL PROPOSED SIGN PANEL T3 ON NEW TRUSS
- REMOV SIGN PANEL T3 FROM EXISTING TRUSS
- REMOV OH SIN STR-SPN
- REM CONC FDN-OVHD

1S0991055R252.64
STA. 333+75.00

SIGNING LEGEND

- EXISTING OVERHEAD TRUSS MOUNTED SIGN
- PROPOSED OVERHEAD TRUSS MOUNTED SIGN
- PROPOSED DYNAMIC MESSAGE SIGN
- EXISTING OVERHEAD CANTILEVER SIGN
- PROPOSED OVERHEAD CANTILEVER SIGN
- EXISTING GROUND MOUNTED SIGN (1 POSTS)
- EXISTING GROUND MOUNTED SIGN (2 POSTS)
- PROPOSED GROUND MOUNTED SIGN (2 POSTS)

LEGEND

- SEEDING CLASS 2A, TOPSOIL FURNISH AND PLACE, (VAR. DEPTH) AND EROSION CONTROL
- DIRECTION OF TRAFFIC
- SOIL BORING

REVISIONS	
NAME	DATE

ILLINOIS DEPARTMENT OF TRANSPORTATION
FAI ROUTE 55 (I-80 TO U.S. 30)
SIGNING

**SIGNING AND ROADWAY PLAN
SIGN TRUSS AT STA. 333+75.00 (NB)**

SCALE: 1"=50'
DATE: 05/19/06

DRAWN BY: MW
CHECKED BY: DDH

TENG
TENG & ASSOCIATES, INC.
ENGINEERS/ARCHITECTS/PLANNERS
CHICAGO, ILLINOIS

PLOT DATE = 05/19/06
 FILE NAME = 051906
 PLOT SCALE = 1"=50'
 USER NAME = MUSER