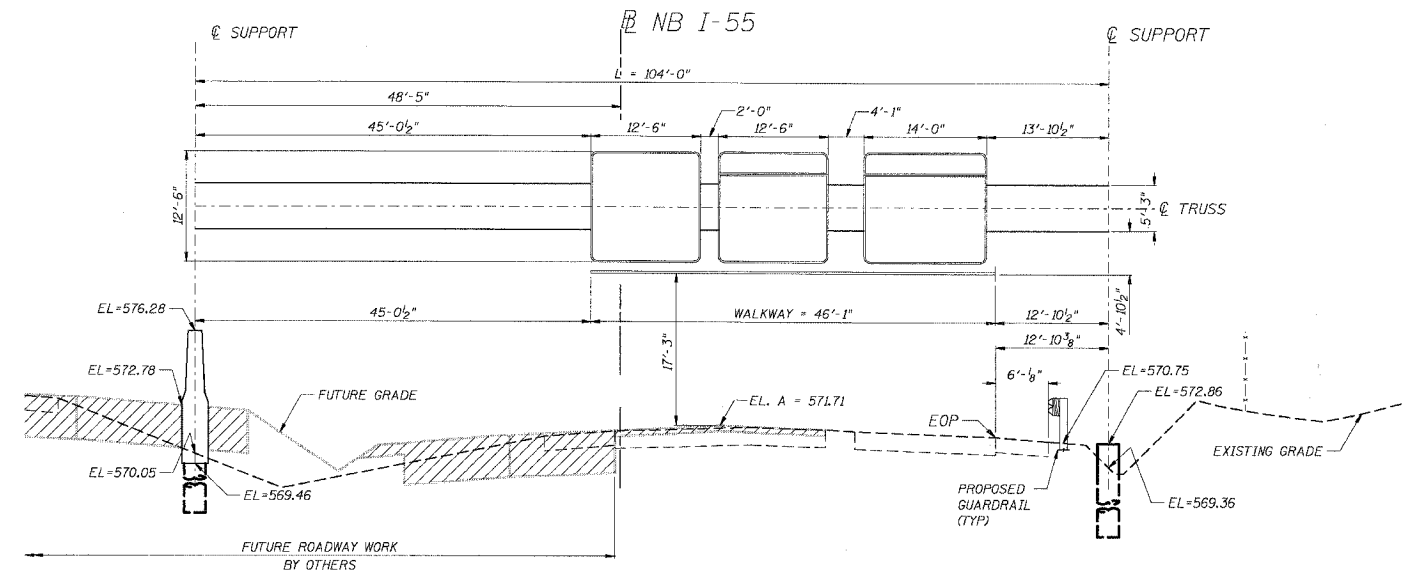
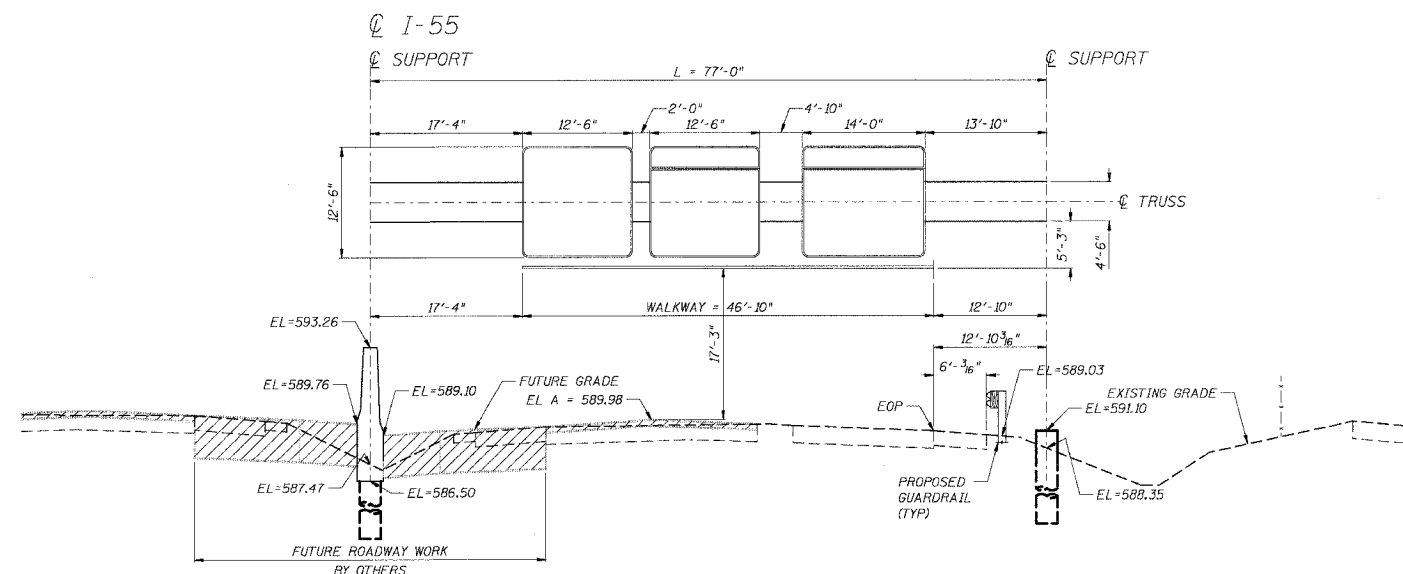


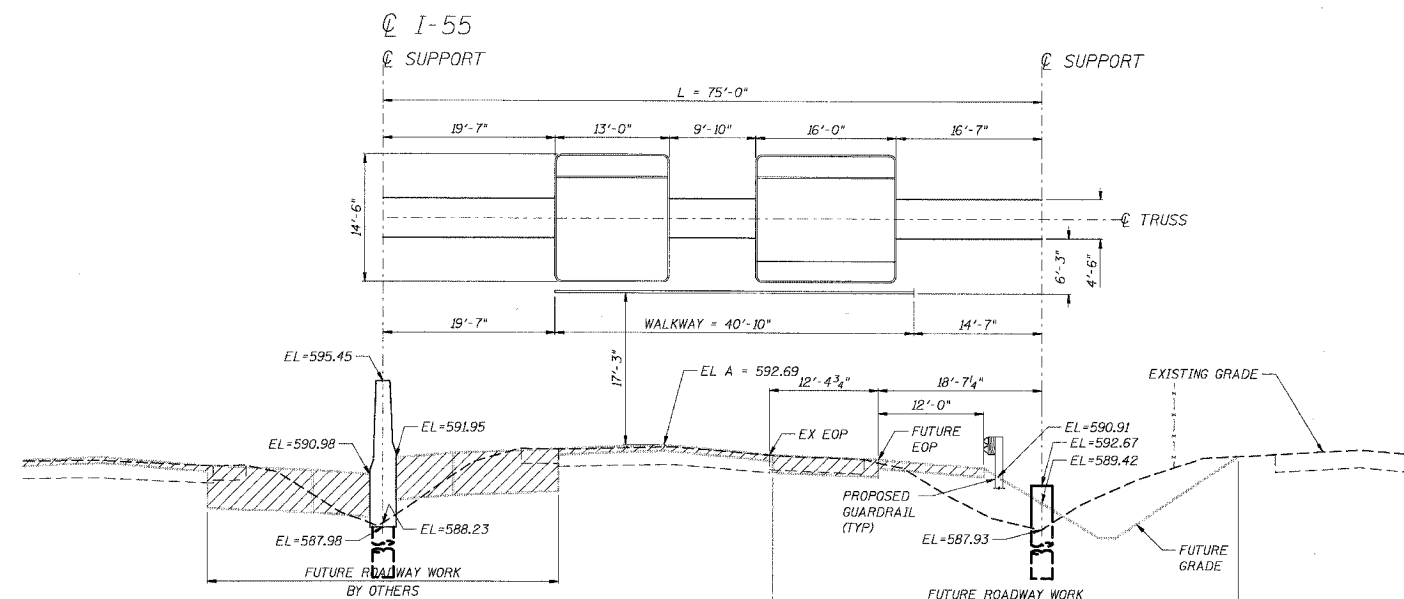
F.A.I. RTE.	SECTION	COUNTY	TOTAL SHEETS	SHEET NO.
55	2005-062 I	WILL	72	25
STA.		TO STA.		
FED. ROAD DIST. NO.	ILLINOIS	FED. AID PROJECT		



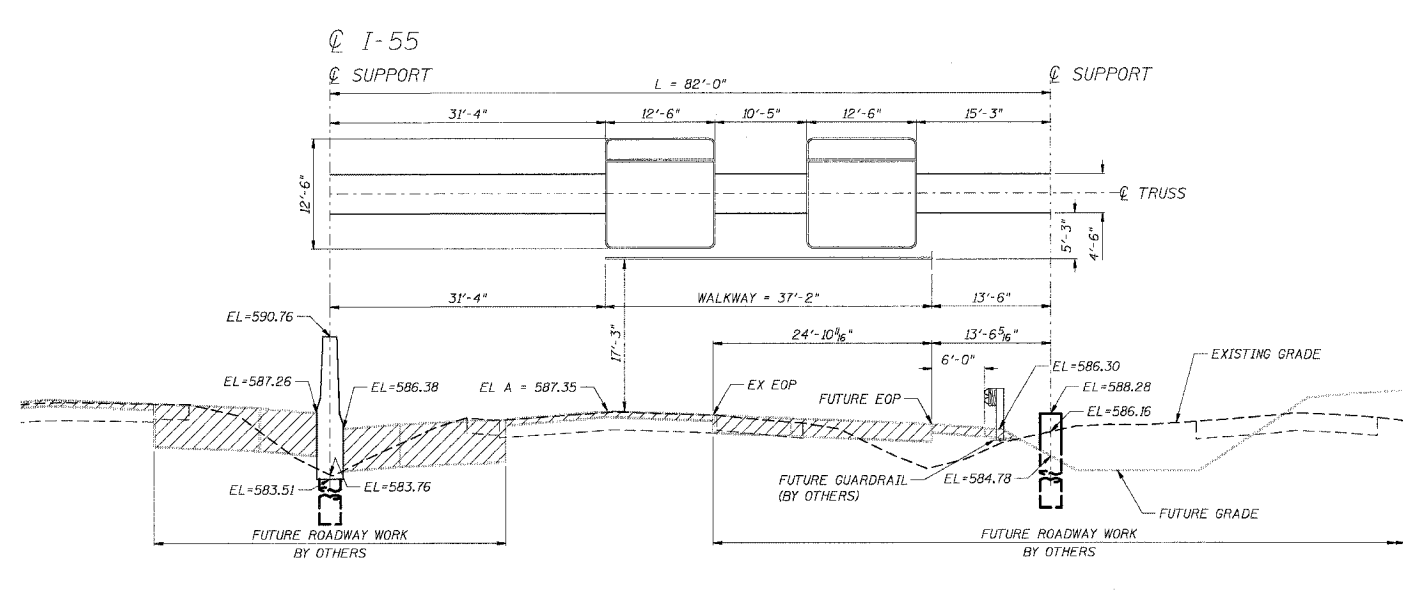
ISO991055R249.90  
STA 189+70  
I-55 N.B LOOKING NORTH



ISO991055L250.67  
STA 229+76  
I-55 S.B LOOKING SOUTH



ISO991055R251.02  
STA 248+22  
I-55 N.B LOOKING NORTH



ISO991055L251.17  
STA 256+26  
I-55 S.B LOOKING SOUTH

PLOT DATE = 05/19/06  
 FILE NAME = I-55 SIGN STRUCTURE SIGN PANEL GENERAL ELEVATIONS - I.dgn  
 PLOT SCALE = 1/8" = 1'-0"  
 USER NAME = MW

REVISIONS	
NAME	DATE

ILLINOIS DEPARTMENT OF TRANSPORTATION  
FAI ROUTE 55 (I-80 TO U.S. 30)  
SIGNING

**SIGN STRUCTURE  
SIGN PANEL  
GENERAL ELEVATIONS - I**

SCALE: N.T.S. DRAWN BY: MW  
DATE: 05/19/06 CHECKED BY: DDH

**TENG** TENG & ASSOCIATES, INC.  
ENGINEERS/ARCHITECTS/PLANNERS  
CHICAGO, ILLINOIS