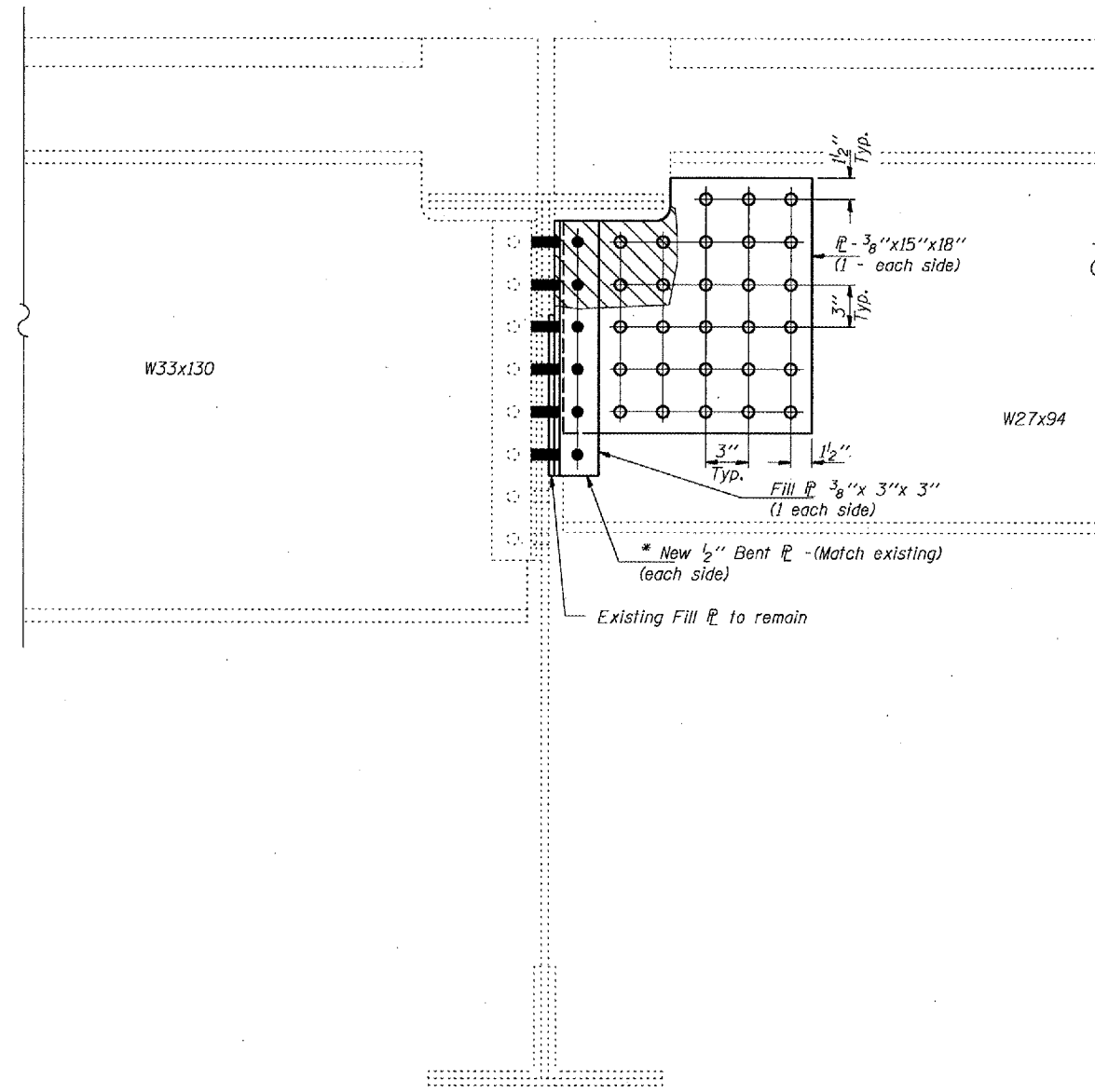


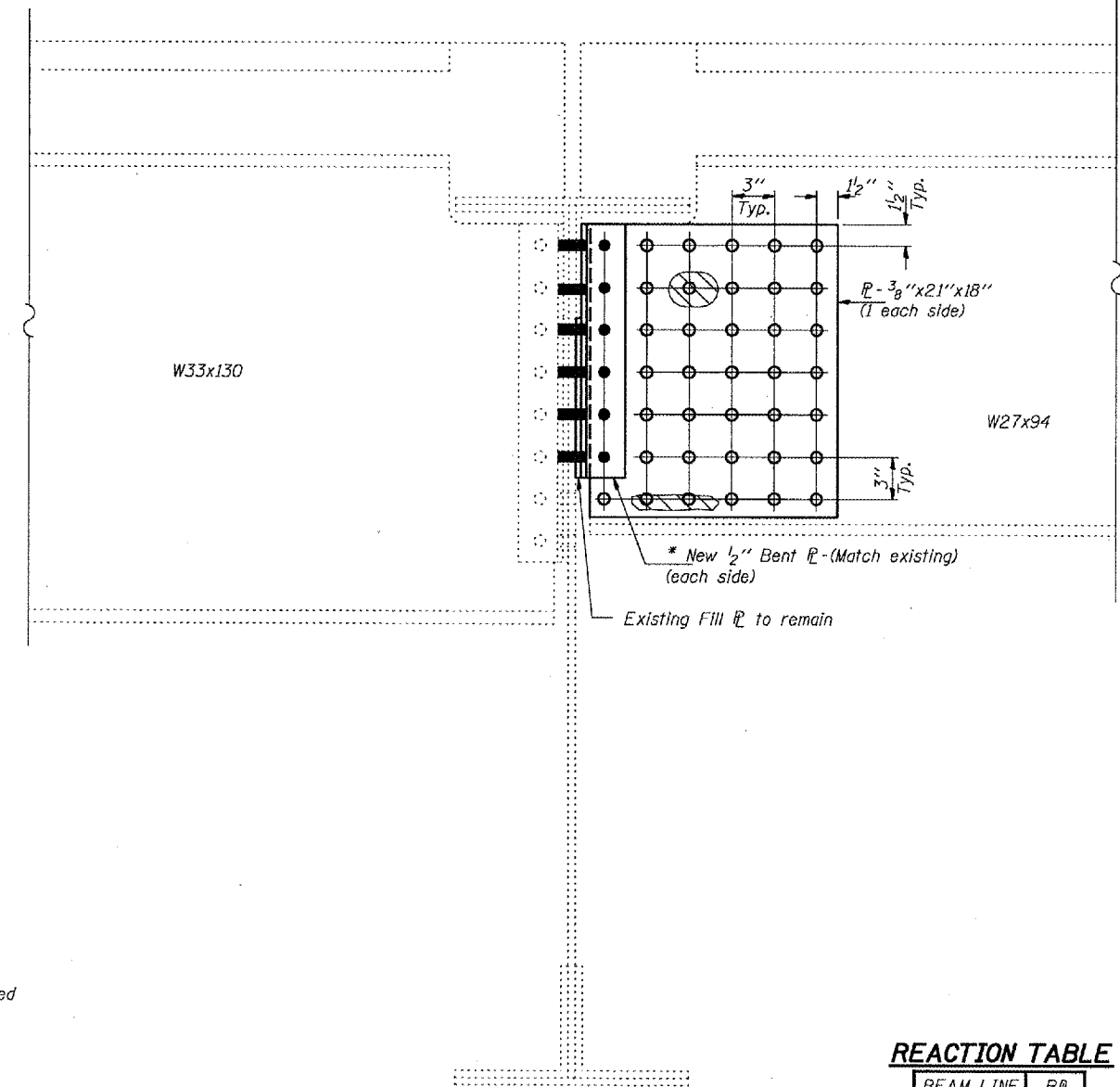
STATE OF ILLINOIS
DEPARTMENT OF TRANSPORTATION

ROUTE NO.	SECTION	COUNTY	TOTAL SHEETS	SHEET	SHEET NO.
FAI 290	COOK		12	7	3
FED. AID DIST. NO. 7	ILL. DIST. NO.	FED. AID PROJECT			

Contract No. 60B20



SECTION AT PIER J
Beam Line 12



SECTION AT PIER J
Beam Line 14

- - See NOTE A
- - See NOTE B

All sections are looking North.
Hatched areas indicate beam damage.

* Temporary support system will be required when removing and replacing bent R (Typ.)

REACTION TABLE

BEAM LINE	R@
12	14k
14	14k

DESIGNED	DAB
CHECKED	VHV
DRAWN	baliva
CHECKED	DAB VHV

JUNE 8, 2006
EXAMINED *John A. Morris*
ENGINEER OF STRUCTURAL SERVICES
PASSED *Ralph E. Anderson*
ENGINEER OF BRIDGES AND STRUCTURES

NOTE A:
Remove existing rivets. Field drill $\frac{15}{16}$ " ϕ holes in new angles using holes in existing beams as template. Existing rivets are to be replaced with $\frac{1}{8}$ " ϕ H.S. bolts. Cost of rivet replacement and field drilling is included with Structural Steel Repair.

NOTE B:
Drill $\frac{15}{16}$ " ϕ holes in plates. Field drill $\frac{15}{16}$ " ϕ holes in web using holes in plates as template. Use $\frac{1}{8}$ " ϕ H.S. bolts. Cost is included with Structural Steel Repair.

BRIDGE REPAIRS
FAI-290
CONGRESS STREET FROM OLD POST OFFICE
TO THE SOUTH BRANCH OF THE CHICAGO RIVER
COOK COUNTY
STRUCTURE NO. 016-0460