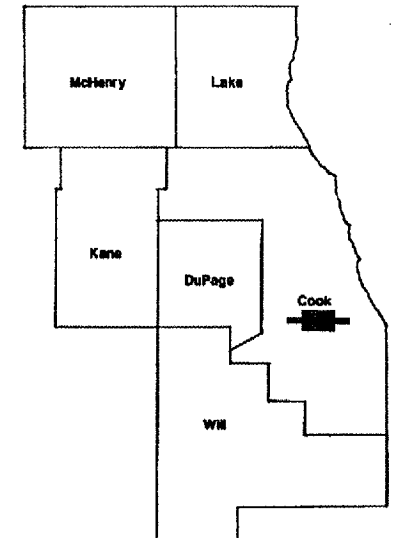


ROUTE	SECTION	COUNTY	TOTAL SHEETS	SHEET NUMBER
FAI 290	2424.2B-BR-1	COOK	12	1

CONTRACT NO.: 60B20

D-91-308-06



FOR INDEX OF SHEETS SEE SHEET 2

STATE OF ILLINOIS  
DEPARTMENT OF TRANSPORTATION  
DIVISION OF HIGHWAYS  
DISTRICT ONE

**PROPOSED HIGHWAY PLANS**

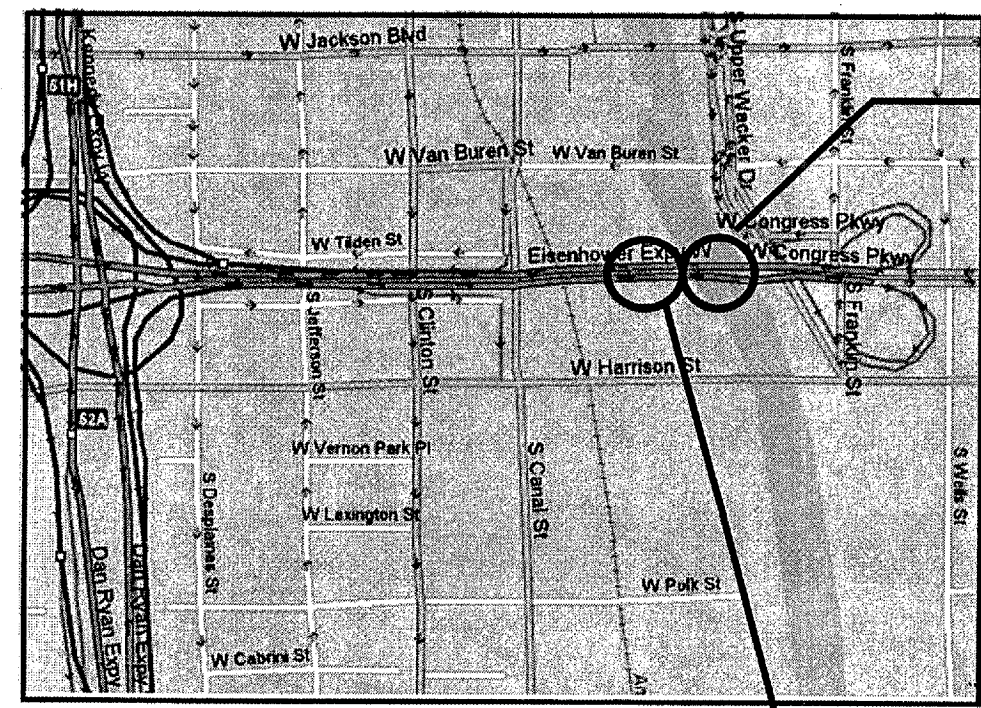
ROUTE FAI 290:I-290  
(EISENHOWER EXPY/ CONGRESS PKWY)  
OVER SOUTH BRANCH CHICAGO RIVER  
SECTION 2424.2B-BR-1  
SN'S 016-0460 AND 016-2445  
STRUCTURAL STEEL REPAIR  
COOK COUNTY  
C-91-308-06

IMPROVEMENT IS LOCATED  
IN THE CITY OF CHICAGO

LOCATION OF IMPROVEMENT INDICATED THUS:

R 14E

T 39N



IMPROVEMENT  
LOCATION:  
SN 016-2445



IMPROVEMENT  
LOCATION:  
SN 016-0460

WEST CHICAGO TOWNSHIP

STATE OF ILLINOIS  
DEPARTMENT OF TRANSPORTATION  
DIVISION OF HIGHWAYS  
SUBMITTED: May 31 2006  
Diane M. O'Keefe  
DEPUTY DIRECTOR OF HIGHWAYS, REGION ENGINEER  
June 30 2006  
Mike Fine  
ENGINEER OF DESIGN AND ENVIRONMENT  
June 30 2006  
Milton K. Seepelt  
DIRECTOR OF HIGHWAYS, CHIEF ENGINEER

PRINTED BY THE AUTHORITY  
OF THE STATE OF ILLINOIS

C.U.A.N.: CHICAGO UTILITY ALERT  
NETWORK  
(312) 744-7000

TRAFFIC DATA (I-290)  
2004 ADT = 139000  
POSTED SPEED = 35 M.P.H.

DISTRICT ONE - PLAN PREPARATION ENGINEER:  
KEN ENG/R. BORO (847) 705-4178

CONTRACT NO. 60B20

ROUTE	SECTION	COUNTY	TOTAL SHEETS	SHEET NUMBER
FAI 290	2424.2B-BR-1	COOK	12	2

**CONTRACT NO. 60B20**

**INDEX OF SHEETS**

- 1 TITLE SHEET
- 2 INDEX OF SHEETS AND GENERAL NOTES
- 3 SUMMARY OF QUANTITIES
- 4 SN 016-0460 BRIDGE PLAN VIEW
- 5-7 BRIDGE REPAIRS SN 016-0460
- 8-12 BRIDGE REPAIRS SN 016-2445

**GENERAL NOTES**

BEFORE STARTING ANY EXCAVATION, THE CONTRACTOR SHALL CALL "C.U.A.N." (CHICAGO UTILITY ALERT NETWORK) AT (312) 744-7000 FOR FIELD LOCATIONS OF BURIED ELECTRIC, TELEPHONE AND GAS UTILITIES. (48 HOURS NOTIFICATION IS REQUIRED).

THE CONTRACTOR SHALL COORDINATE CONSTRUCTION ACTIVITIES WITH UTILITY COMPANIES AND THE CITY OF CHICAGO.

THE CONTRACTOR WILL NOT BE ALLOWED TO SET UP A YARD OR FIELD OFFICE ON STATE PROPERTY WITHOUT WRITTEN PERMISSION FROM THE DEPARTMENT.

WHEN ARTIFICIAL LIGHTING IS UTILIZED IN NIGHT OPERATIONS, THE CONTRACTOR SHALL EXERCISE THE UTMOST PRECAUTIONS IN PREVENTING ADVERSE VISIBILITY TO THE MOTORING PUBLIC AND ADJOINING RESIDENTIAL AREAS.

IT SHALL BE THE CONTRACTOR'S RESPONSIBILITY TO VERIFY ALL DIMENSIONS AND CONDITIONS EXISTING IN THE FIELD PRIOR TO CONSTRUCTION AND ORDERING OF MATERIALS.

THESE PLANS HAVE BEEN PREPARED FROM NOTES RECEIVED FROM BRIDGE INSPECTORS.  
DO NOT SCALE PLANS FOR CONSTRUCTION DIMENSIONS.

THE CONTRACTOR SHALL OBTAIN COAST GUARD APPROVAL TO OCCUPY NAVIGABLE WATERS, IF REQUIRED, FOR THE PROPOSED WORK. A WORK PLAN SHALL BE PREPARED BY THE CONTRACTOR, REVIEWED AND APPROVED BY THE ENGINEER AND BE SUBMITTED BY THE ENGINEER TO THE COAST GUARD AT THE ADDRESS LISTED BELOW FOR APPROVAL:

BRIDGE ADMINSTRATOR  
US COAST GUARD  
NINTH COAST GUARD DISTRICT  
1240 E. NINTH ST.  
CLEVELAND, OH 44199-2060

FOR ACCESS TO THE INTERIOR OF THE BRIDGE AND TIME - TABLES FOR THE RAISING AND LOWERING OF THE MOVABLE SPAN, CONTACT THE CITY OF CHICAGO - HEAD OF OPERATIONS FOR BRIDGE TENDERS, DARREL ROUSE, AT (312) 745-3113

NO LANE CLOSURES SHALL BE ALLOWED ON I-290 (CONGRESS PKWY). ALL WORK SHALL BE DONE FROM UNDER THE BRIDGE. ACCESS CAN BE OBTAINED THROUGH THE POST OFFICE VIA POLK ST. AND VIA THE VAN BUREN ST. RAMP.

THE CONTRACTOR SHALL CONTACT MR. WLLIAM COOBER - POST OFFICE MANAGER OF FIELD MAINTENANCE- AT (312) 983-7728 TO GAIN ACCESS TO THE PARKING AREA BETWEEN THE POST OFFICE AND THE CHICAGO RIVER DRIVE.

THE KEY TO THE VAN BUREN ST. GATE CAN BE OBTAINED BY CONTACTING SARAH WILSON @ (847) 705-4180

THERE IS A COM ED TRANSFORMER LOCATED UNDER SN 016-0460. THE CONTRACTOR SHALL TAKE APPROPRIATE PRECAUTIONS WHEN WORKING IN THE AREA.

ILLINOIS DEPARTMENT OF TRANSPORTATION

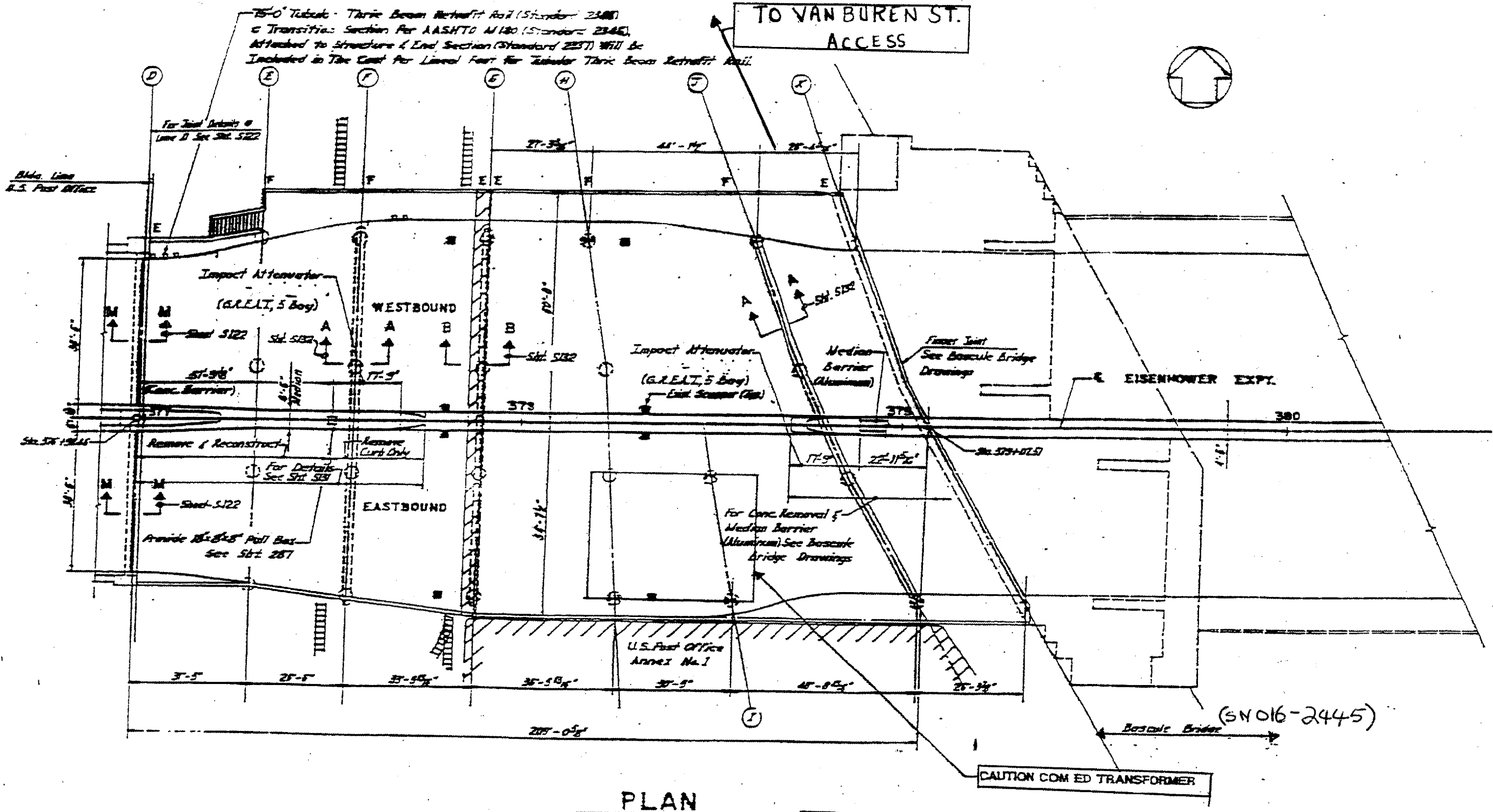
**INDEX OF SHEETS  
GENERAL NOTES**

ROUTE	SECTION	COUNTY	TOTAL SHEETS	SHEET NUMBER
FAI 290/I -290	2424.2B-BR-1	COOK	12	3

SUMMARY OF QUANTITIES			URBAN 100% STATE TOTAL QUANTITIES	CONSTRUCTION TYPE CODE SFTY 2A	
CODE NO.	ITEMS	UNITS		SN 016-0460	SN 016-2445
67100100	MOBILIZATION	L SUM	1	0.5	0.5
50501130	STRUCTURAL STEEL REPAIR	POUND	4200	600	3600
67000400	ENGINEER'S FIELD OFFICE, TYPE A	CAL MO	2	1	1
Z0073400	TEMPORARY SUPPORT SYSTEM	EACH	4	4	

ILLINOIS DEPARTMENT OF  
TRANSPORTATION  
SUMMARY OF QUANTITIES

ROUTE FAI 290	SECTION 2424.2B-BR-1	COUNTY COOK	TOTAL SHEETS 12	SHEET NUMBER 4
------------------	-------------------------	----------------	--------------------	-------------------



PLAN

FOR INFORMATION ONLY

REVISIONS	
NAME	DATE

ILLINOIS DEPARTMENT OF TRANSPORTATION  
 BRIDGE 1 SN: 016-0460  
 I-290 OVER POST OFFICE TO  
 S. BR. CHICAGO RV

SCALE: VERT. \_\_\_\_\_  
 HORIZ. \_\_\_\_\_  
 DATE \_\_\_\_\_

DRAWN BY \_\_\_\_\_  
 DESIGNED BY \_\_\_\_\_  
 CHECKED BY \_\_\_\_\_

STATE OF ILLINOIS  
DEPARTMENT OF TRANSPORTATION

ROUTE NO.	SECTION	COUNTY	SHEET NO.	SHEET	SHEET NO. 1
FAI 290	COOK		12	5	3 SHEETS
FED. ROAD DIST. NO. 7	ILLINOIS	FED. AID PROJECT			

Contract No. 60B20

**GENERAL NOTES**

All structural steel shall conform to AASHTO Classification M-270 Gr. 36, unless otherwise noted.

Plan dimensions and details relative to existing structure have been taken from existing plans and are subject to nominal construction variations. It shall be the Contractor's responsibility to verify such dimensions and details in the field and make necessary approved adjustments prior to construction or ordering of materials. Such variations shall not be cause for additional compensation for a change in the scope of the work, however, the Contractor will be paid for the quantity actually furnished at the unit price bid for the work.

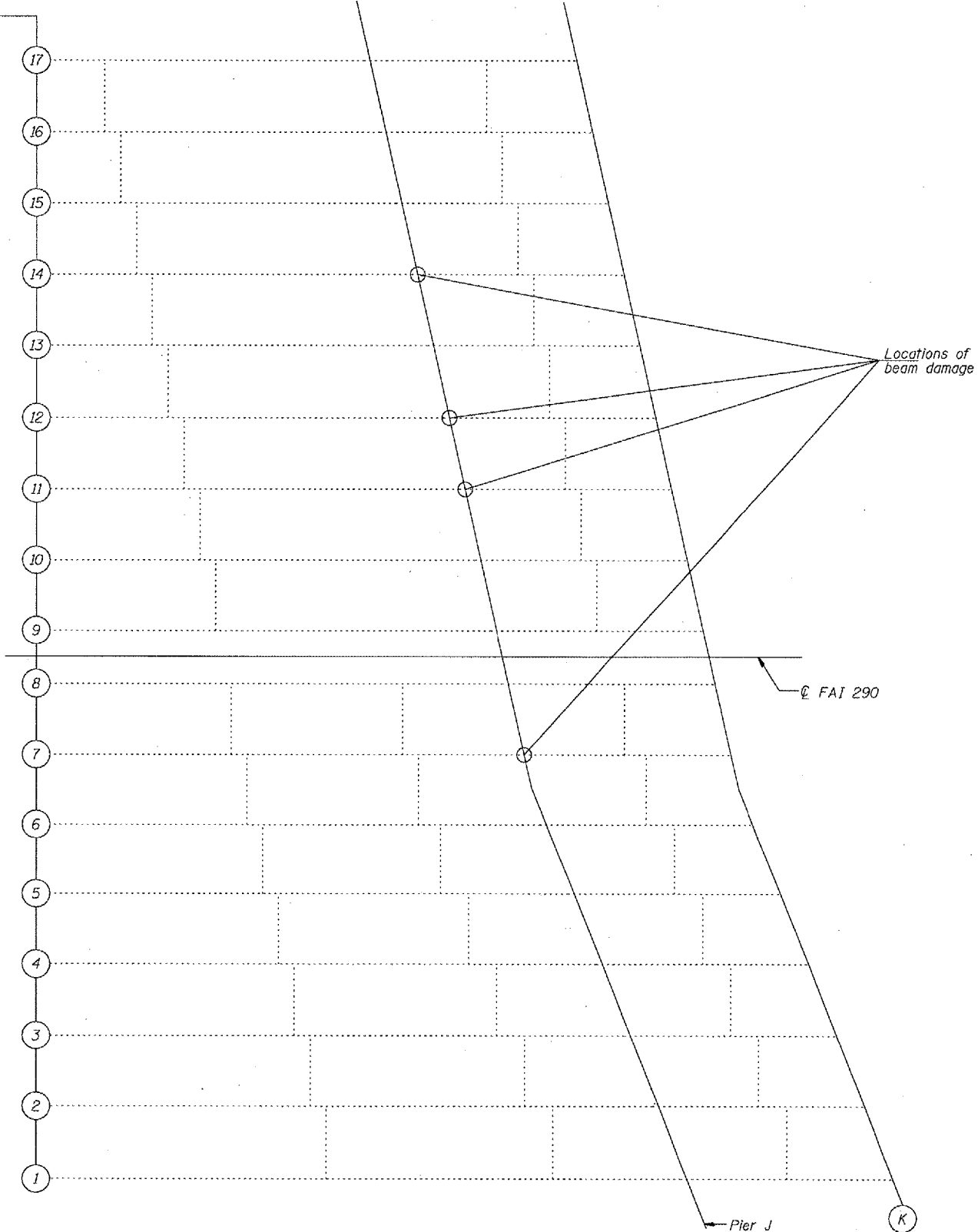
The inorganic zinc rich primer/acrylic/acrylic paint system shall be used for shop and field painting of new structural steel except where otherwise noted. The color of the acrylic finish coat shall be Gray, Munsell No. 5B 7/1. See Special Provision "Cleaning and Painting New Metal Structures".

The existing structural steel coating contains lead. The Contractor should take appropriate precautions to deal with the presence of lead on this project. Existing structural steel shall only be cleaned and painted as required by the Special Provision "Cleaning and Painting Contact Surfaces of Existing Steel Structures".

The Contractor shall provide support and/or shoring systems at the beam ends being repaired. See Special Provision "Temporary Support System."

Girder No.

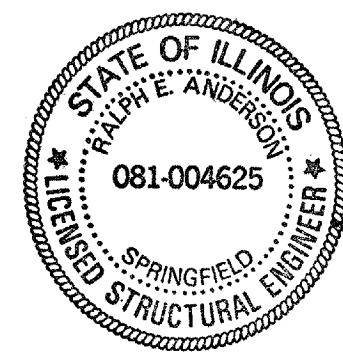
- 17
- 16
- 15
- 14
- 13
- 12
- 11
- 10
- 9
- 8
- 7
- 6
- 5
- 4
- 3
- 2
- 1



DESIGNED *Ramin A. Balin*  
 CHECKED *Victor Veliz*  
 DRAWN *baliva*  
 CHECKED *AB UHV*

JUNE 8, 2006  
 EXAMINED *John A. Morrison*  
 ENGINEER OF STRUCTURAL SERVICES  
 PASSED *Ralph E. Anderson*  
 ENGINEER OF BRIDGES AND STRUCTURES

**FRAMING PLAN**



EXPIRES 11-30-2006

**TOTAL BILL OF MATERIAL**

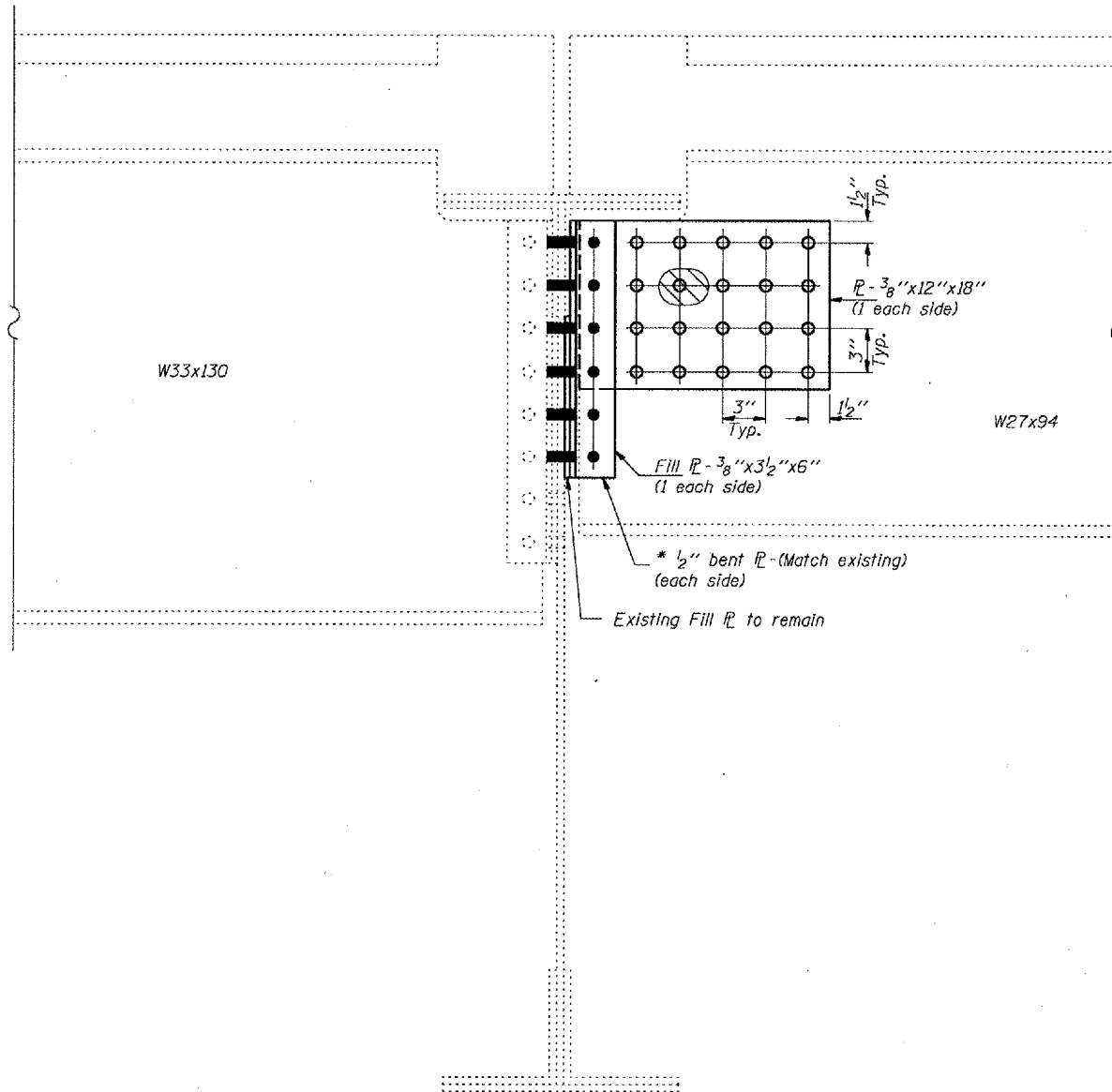
ITEM	UNIT	QUANTITY
Structural Steel Repair	Pound	600
Temporary Support System	Each	4

**BRIDGE REPAIRS**  
**FAI-290**  
**CONGRESS STREET FROM OLD POST OFFICE**  
**TO THE SOUTH BRANCH OF THE CHICAGO RIVER**  
**COOK COUNTY**  
**STRUCTURE NO. 016-0460**

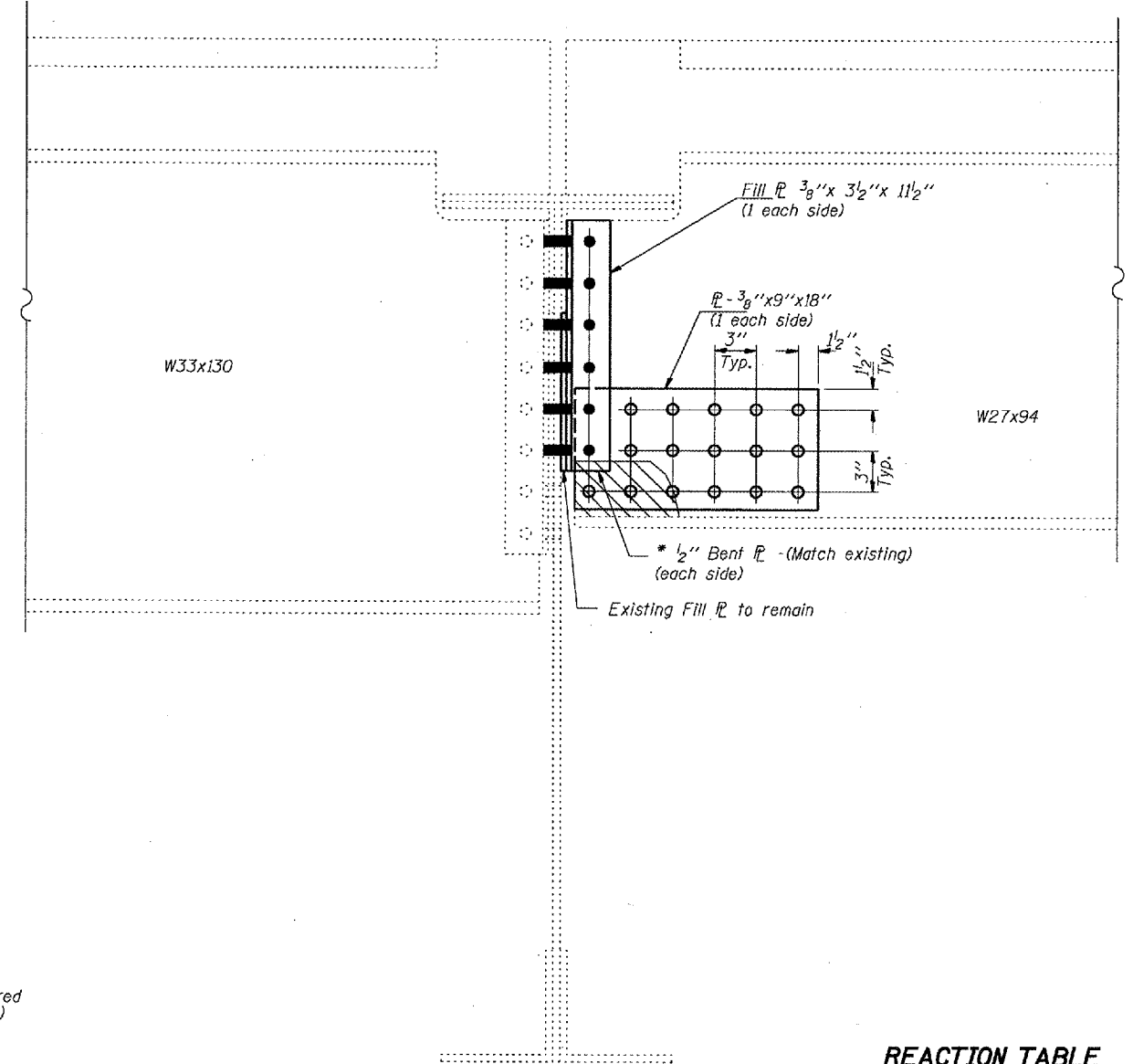
STATE OF ILLINOIS  
DEPARTMENT OF TRANSPORTATION

ROUTE NO.	SECTION	COUNTY	JOB SHEETS	SHEET NO.	SHEET NO. 2 3 SHEETS
FAI 290	COOK		12	6	
FED. ROAD DIST. NO. 7	ALTITUDE	FED. ROAD PROJECT			

Contract No. 60B20



**SECTION AT PIER J**  
Beam Line 7



**SECTION AT PIER J**  
Beam Line 11

- - See NOTE A
- - See NOTE B

All sections are looking North.  
Hatched areas indicate beam damage.

\* Temporary support system will be required  
when removing and replacing bent R (Typ.)

**REACTION TABLE**

BEAM LINE	R@
7	14k
11	14k

DESIGNED	DAB
CHECKED	VHV
DRAWN	baliva
CHECKED	DAB VHV

JUNE 8, 2006  
EXAMINED *John A. Morris*  
ENGINEER OF STRUCTURAL SERVICES  
PASSED *Ralph E. Anderson*  
ENGINEER OF BRIDGES AND STRUCTURES

NOTE A:  
Remove existing rivets. Field drill  $\frac{15}{16}$ "  $\phi$  holes in new angles using holes in existing beams as template. Existing rivets are to be replaced with  $\frac{7}{8}$ "  $\phi$  H.S. bolts. Cost of rivet replacement and field drilling is included with Structural Steel Repair.

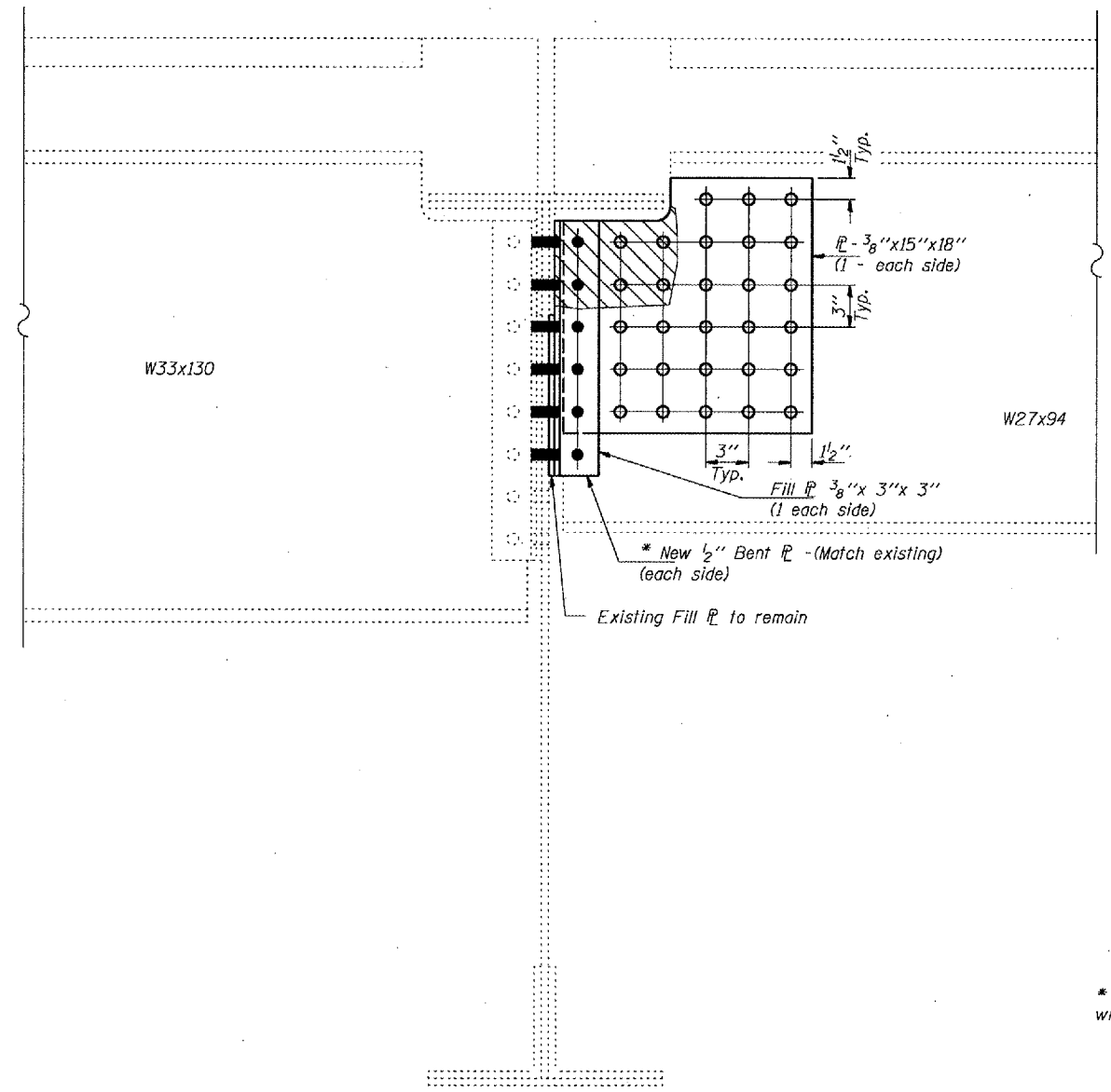
NOTE B:  
Drill  $\frac{15}{16}$ "  $\phi$  holes in plates. Field drill  $\frac{15}{16}$ "  $\phi$  holes in web using holes in plates as template. Use  $\frac{7}{8}$ "  $\phi$  H.S. bolts. Cost is included with Structural Steel Repair.

**BRIDGE REPAIRS**  
**FAI-290**  
**CONGRESS STREET FROM OLD POST OFFICE**  
**TO THE SOUTH BRANCH OF THE CHICAGO RIVER**  
**COOK COUNTY**  
**STRUCTURE NO. 016-0460**

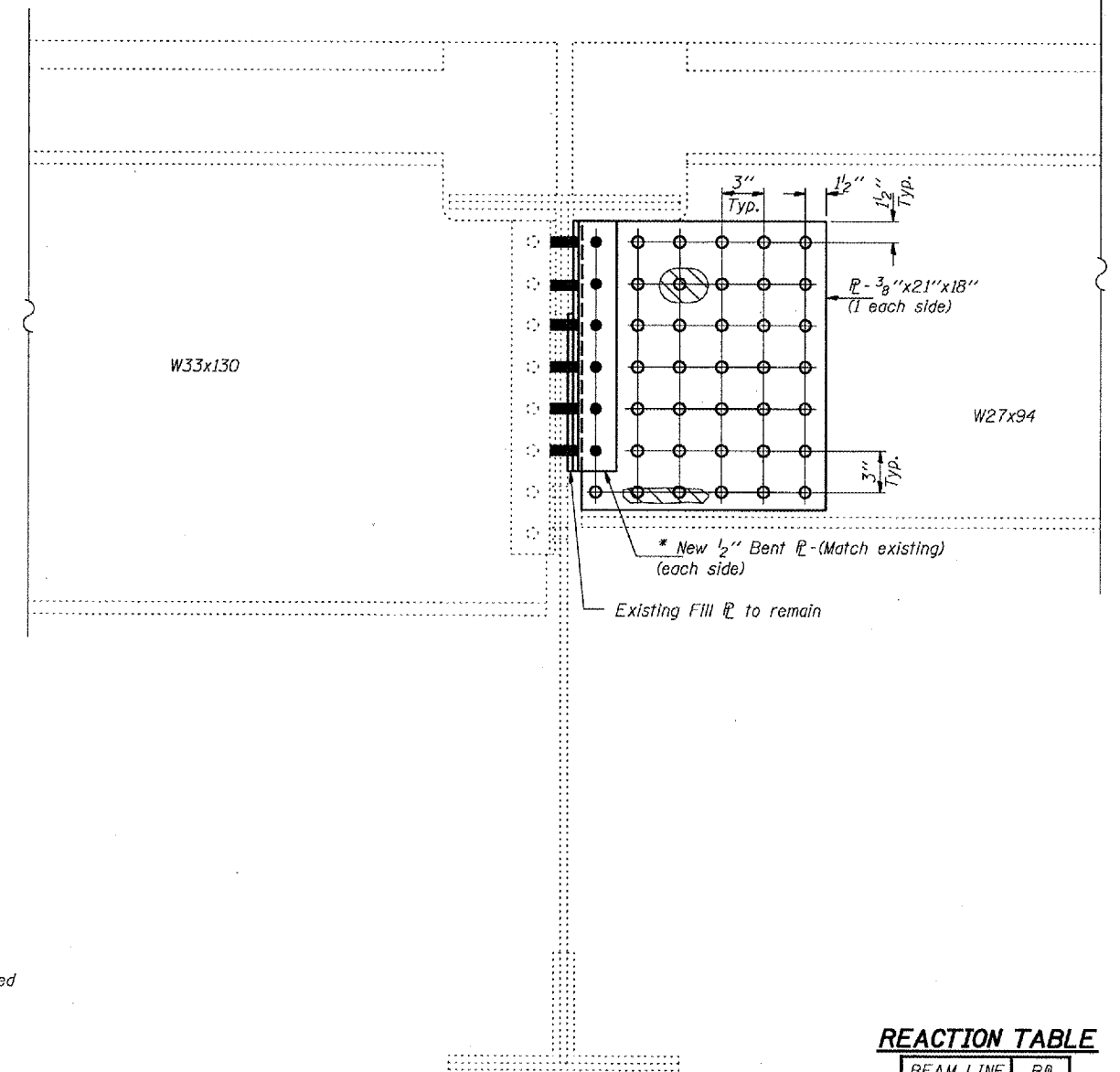
STATE OF ILLINOIS  
DEPARTMENT OF TRANSPORTATION

ROUTE NO.	SECTION	COUNTY	TOTAL SHEETS	SHEET	SHEET NO.
FAI 290	COOK		12	7	3
FED. AID DIST. NO. 7	ILL. DIST. NO.	FED. AID PROJECT			

Contract No. 60B20



**SECTION AT PIER J**  
Beam Line 12



**SECTION AT PIER J**  
Beam Line 14

- - See NOTE A
- - See NOTE B

All sections are looking North.  
Hatched areas indicate beam damage.

\* Temporary support system will be required when removing and replacing bent R (Typ.)

**REACTION TABLE**

BEAM LINE	R@
12	14k
14	14k

DESIGNED	DAB
CHECKED	VHV
DRAWN	baliva
CHECKED	DAB VHV

JUNE 8, 2006  
EXAMINED *John A. Morris*  
ENGINEER OF STRUCTURAL SERVICES  
PASSED *Ralph E. Anderson*  
ENGINEER OF BRIDGES AND STRUCTURES

NOTE A:  
Remove existing rivets. Field drill  $\frac{15}{16}$ "  $\phi$  holes in new angles using holes in existing beams as template. Existing rivets are to be replaced with  $\frac{1}{8}$ "  $\phi$  H.S. bolts. Cost of rivet replacement and field drilling is included with Structural Steel Repair.

NOTE B:  
Drill  $\frac{15}{16}$ "  $\phi$  holes in plates. Field drill  $\frac{15}{16}$ "  $\phi$  holes in web using holes in plates as template. Use  $\frac{1}{8}$ "  $\phi$  H.S. bolts. Cost is included with Structural Steel Repair.

**BRIDGE REPAIRS**  
**FAI-290**  
**CONGRESS STREET FROM OLD POST OFFICE**  
**TO THE SOUTH BRANCH OF THE CHICAGO RIVER**  
**COOK COUNTY**  
**STRUCTURE NO. 016-0460**

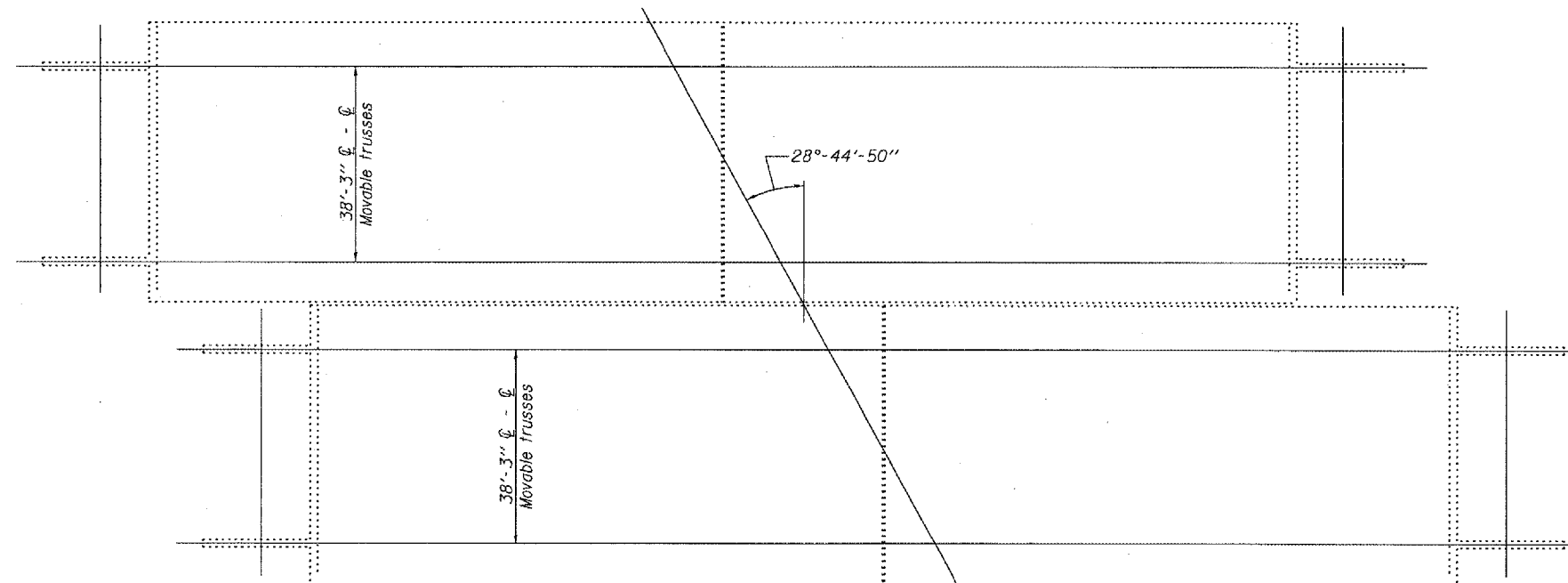
STATE OF ILLINOIS  
DEPARTMENT OF TRANSPORTATION

ROUTE NO.	SECTION	COUNTY	TOTAL SHEETS	SHEET NO.
		COOK	12	8
FED. AID DIST. NO. 1	ILLINOIS	FED. AID PROJECT-	SHEET NO. 1 5 SHEETS	

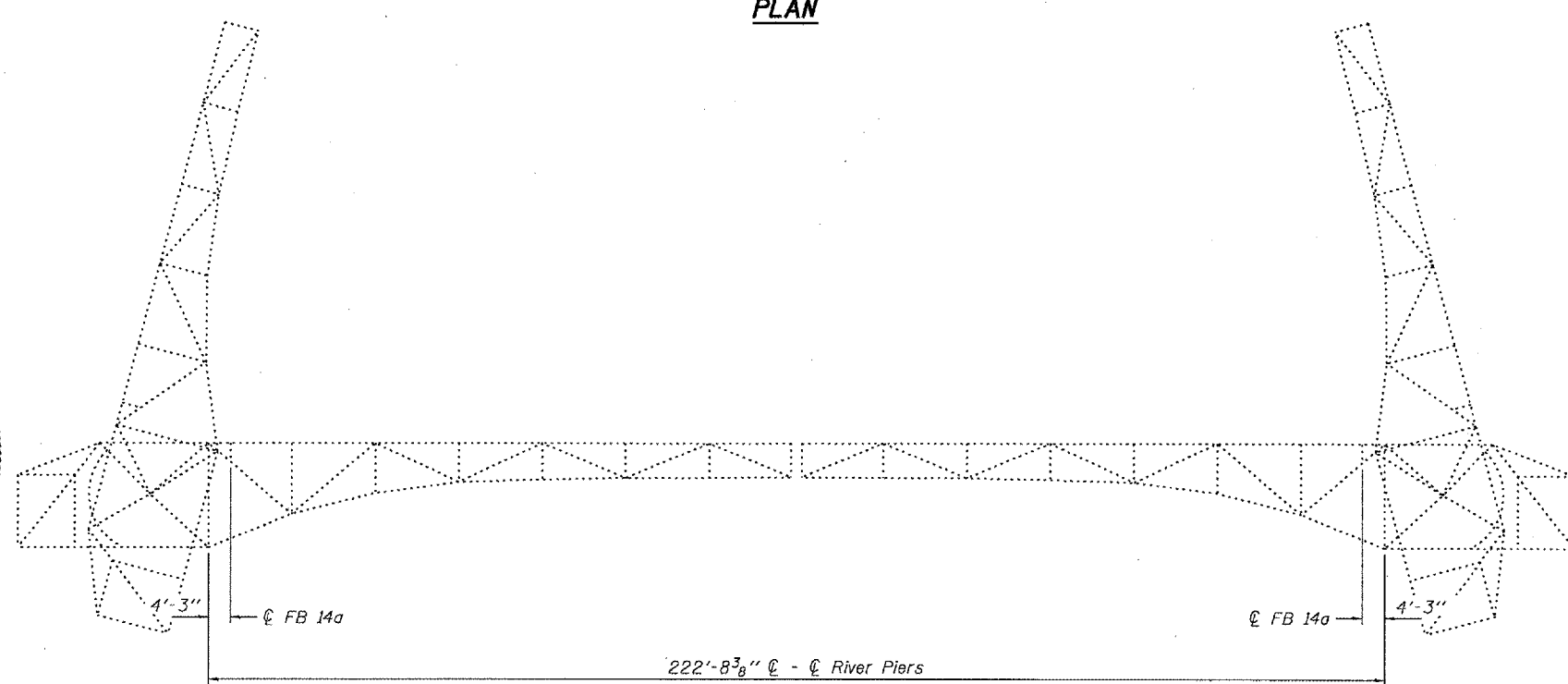
Contract No. 60B20

**GENERAL NOTES**

All structural steel shall conform to AASHTO Classification M-270 Gr. 36, unless otherwise noted.  
Fasteners shall be high strength bolts. Bolts  $7/8"$   $\phi$ , open holes  $15/16"$   $\phi$ , unless otherwise noted.  
Cost of removal and/or re-installation of all members necessary to complete the work as detailed on the plans and as specified in the Special Provisions shall be included in the cost of Structural Steel Repair.  
The existing structural steel coating contains lead. The Contractor should take appropriate precautions to deal with the presence of lead on this project.  
Existing structural steel that will be in contact with new structural steel shall be cleaned and painted prior to erection as required by the Special Provision "Cleaning and Painting Contact Surface Areas of Existing Steel Structures".  
The inorganic zinc rich primer/acrylic/acrylic paint system shall be used for shop and field painting of new structural steel except where otherwise noted. The color of the acrylic finish coat shall be Gray, Munsell No. 5B 7/1. See Special Provision "Cleaning and Painting New Metal Structures".  
Plan dimensions and details relative to existing structure have been taken from existing plans and are subject to nominal construction variations. It shall be the Contractor's responsibility to verify such dimensions and details in the field and make necessary approved adjustments prior to construction or ordering of materials. Such variations shall not be cause for additional compensation for a change in the scope of the work, however, the Contractor will be paid for the quantity actually furnished at the unit price bid for the work.



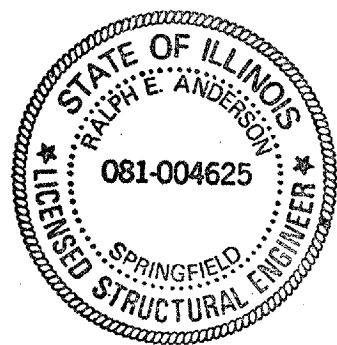
PLAN



ELEVATION

**TOTAL BILL OF MATERIAL**

ITEM	UNIT	QUANTITY
Structural Steel Repair	Pound	3600



EXPIRES 11-30-2006

DESIGNED *Ralph E. Anderson*  
 CHECKED *M. Ve...* EXAMINED *John A. Morris*  
 DRAWN *balva* PASSED *Ralph E. Anderson*  
 CHECKED *MST*

JUNE 8, 2006

**PLAN AND ELEVATION  
CONGRESS PARKWAY  
OVER THE CHICAGO RIVER  
COOK COUNTY  
SN 016-2445**

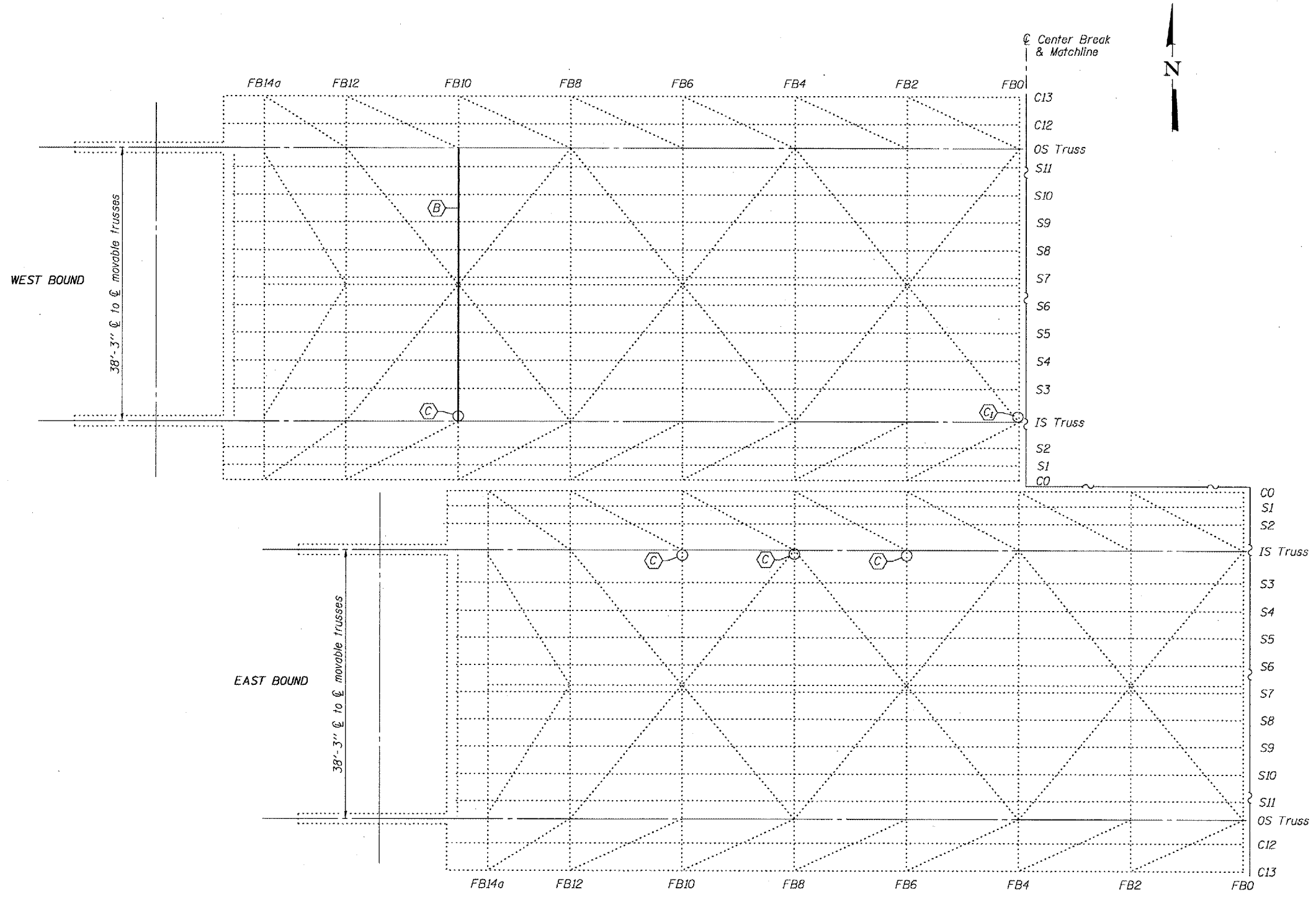


STATE OF ILLINOIS  
DEPARTMENT OF TRANSPORTATION

ROUTE NO.	SECTION	COUNTY	TOTAL SHEETS	SHEET NO.
		COOK	12	9
FED. AID DIST. NO. 7		ILLINOIS	FED. AID PROJECT	

Contract No. 60B20

SHEET NO. 2  
5 SHEETS



- (B) Remove and replace floor beam lower flange angles
- (C) Remove and replace  $\frac{3}{8}$ " plate
- (C1) Remove and replace C 15 x 33.9

**WEST LIFT SPANS**

DESIGNED	DAB
CHECKED	MJT
DRAWN	baliva
CHECKED	DAB MJT

JUNE 8, 2006  
 EXAMINED *John A. Morris*  
 ENGINEER OF STRUCTURAL SERVICES  
 PASSED *Ralph E. Anderson*  
 ENGINEER OF BRIDGES AND STRUCTURES

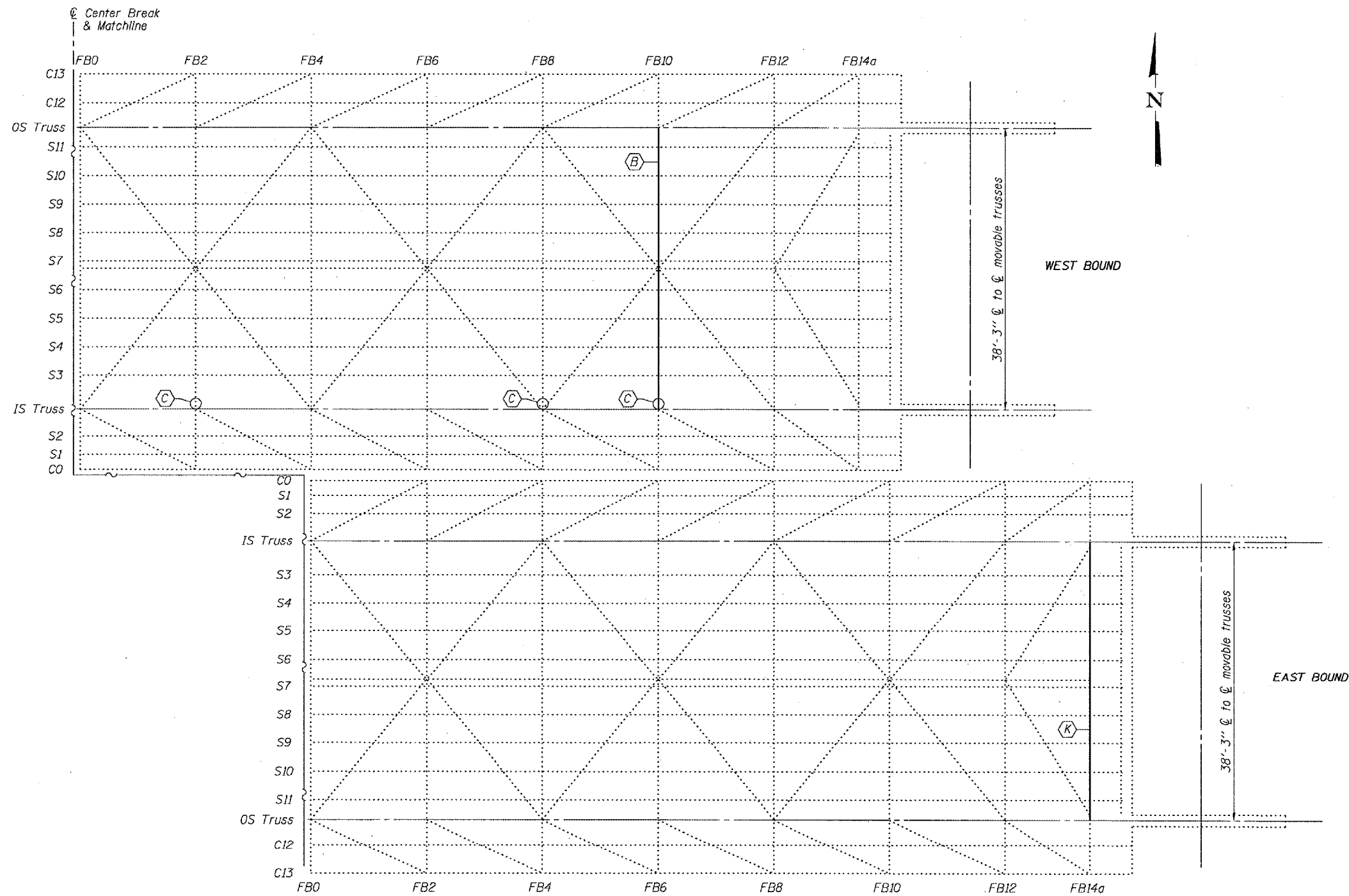
**REPAIR PLAN  
 WEST LIFT SPANS  
 CONGRESS PARKWAY  
 OVER THE CHICAGO RIVER  
 COOK COUNTY  
 SN 016-2445**

STATE OF ILLINOIS  
DEPARTMENT OF TRANSPORTATION

ROUTE NO.	SECTION	COUNTY	TOTAL SHEETS	SHEET NO.
		COOK	12	10
FED. ROAD DIST. NO. 7	ILLINOIS	FED. AID PROJECT		

SHEET NO. 3  
5 SHEETS

Contract No. 60B20



- (B) Remove and replace floor beam lower flange angles
- (C) Remove and replace  $\frac{3}{8}$ " plate
- (K) Remove and replace floor beam angles and gusset plates

**EAST LIFT SPANS**

DESIGNED	DAB
CHECKED	MJT
DRAWN	baliva
CHECKED	DAB MJT

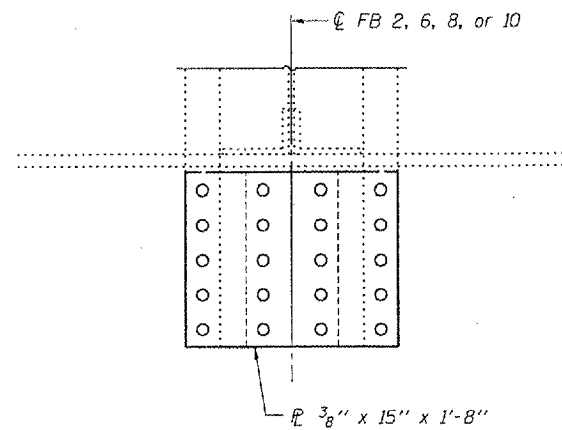
JUNE 8, 2006  
 EXAMINED *John A. Morris*  
 ENGINEER OF STRUCTURAL SERVICES  
 PASSED *Ralph E. Anderson*  
 ENGINEER OF BRIDGES AND STRUCTURES

**REPAIR PLAN  
 EAST LIFT SPANS  
 CONGRESS PARKWAY  
 OVER THE CHICAGO RIVER  
 COOK COUNTY  
 SN 016-2445**

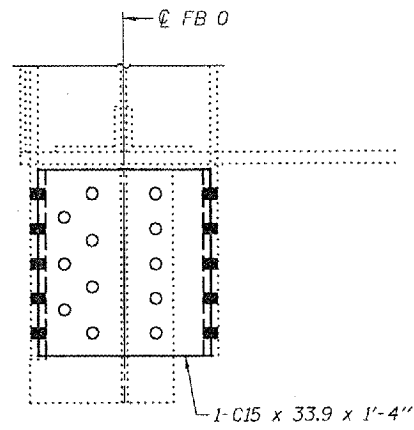
STATE OF ILLINOIS  
DEPARTMENT OF TRANSPORTATION

ROUTE NO.	SECTION	COUNTY	TOTAL SHEETS	SHEET	SHEET NO. 4
		COOK	12	11	5 SHEETS
FED. ROAD DIST. NO. 7	PLAN NO.	FED. AID PROJECT			

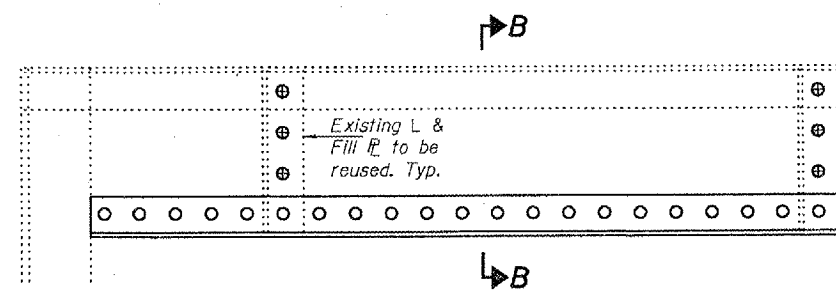
Contract No. 60B20



**PLAN**  
(7 Req'd)  
**REPAIR DETAIL C**

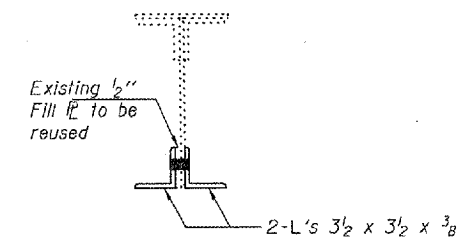


**PLAN**  
(1 Req'd)  
**REPAIR DETAIL C1**



**ELEVATION OF UPPER CHORD FB 10**  
(Looking East)

**REPAIR DETAIL B**  
(2 Req'd)



**SECTION B-B**

**LEGEND**

- ⊕ Existing rivet to be removed and replaced w/ HS bolt.
- Use existing holes as template to field drill holes in repair plate, angle or beam.
- ⊙ 15/16" φ holes shop drilled. Use holes as template to field drill holes in existing beam.

DESIGNED	DAB
CHECKED	MJT
DRAWN	baliva
CHECKED	DAB MJT

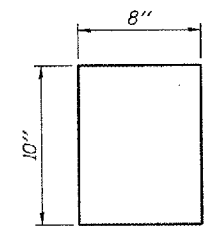
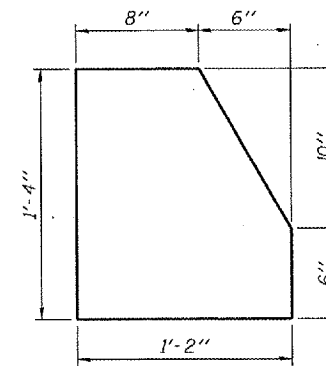
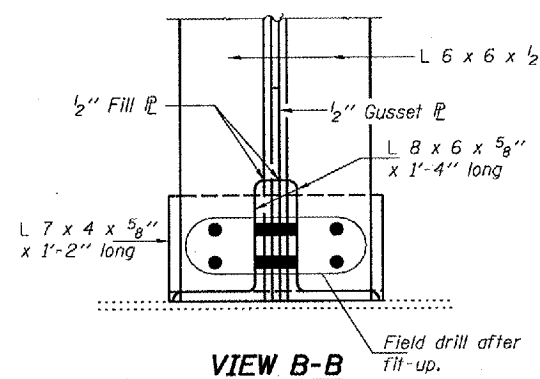
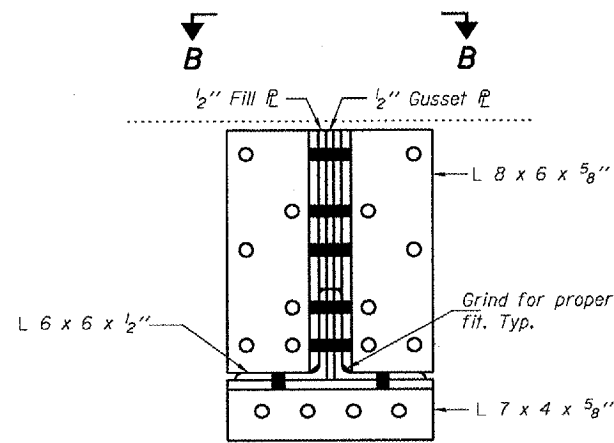
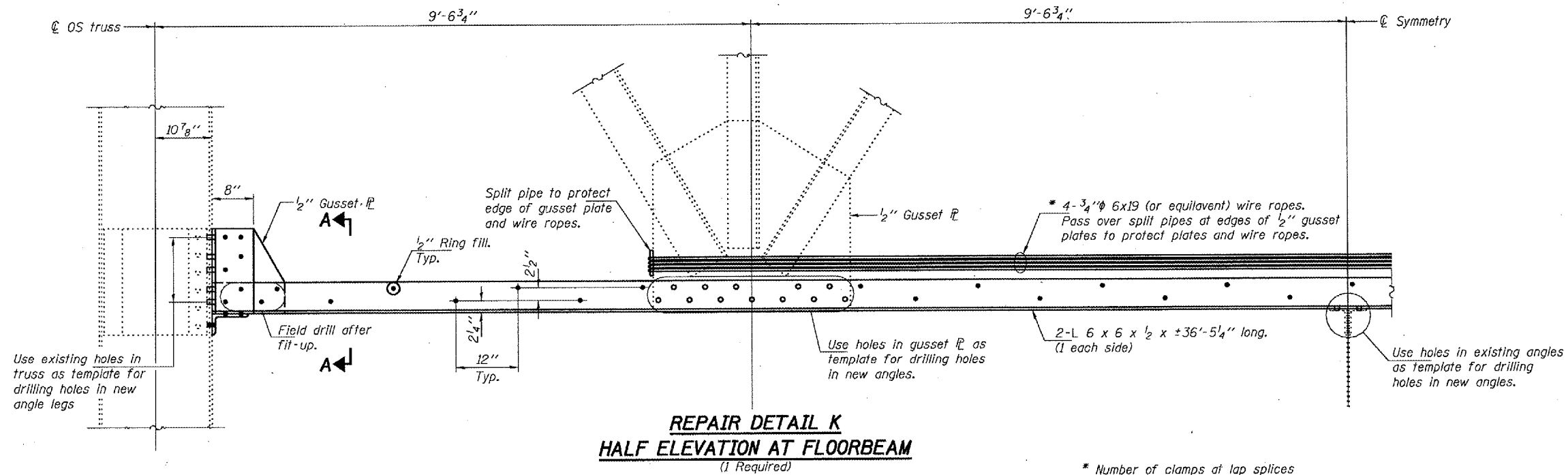
JUNE 8, 2006  
 EXAMINED *John A. Morris*  
 ENGINEER OF STRUCTURAL SERVICES  
 PASSED *Ralph E. Anderson*  
 ENGINEER OF BRIDGES AND STRUCTURES

**REPAIR DETAILS**  
**CONGRESS PARKWAY**  
**OVER THE CHICAGO RIVER**  
**COOK COUNTY**  
**SN 016-2445**

STATE OF ILLINOIS  
DEPARTMENT OF TRANSPORTATION

ROUTE NO.	SECTION	COUNTY	TOTAL SHEETS	SHEET NO.	SHEET NO. 5 5 SHEETS
		COOK	12	12	
FED. ROAD DIST. NO. 7		ILLINOIS	FED. AID PROJECT		

Contract No. 60B20



DESIGNED	DAB
CHECKED	MJT
DRAWN	baliva
CHECKED	DAB MJT

JUNE 8, 2006

EXAMINED *John A. Morris*  
ENGINEER OF STRUCTURAL SERVICES

PASSED *Ralph E. Anderson*  
ENGINEER OF BRIDGES AND STRUCTURES

**REPAIR DETAILS  
CONGRESS PARKWAY  
OVER THE CHICAGO RIVER  
COOK COUNTY  
SN 016-2445**