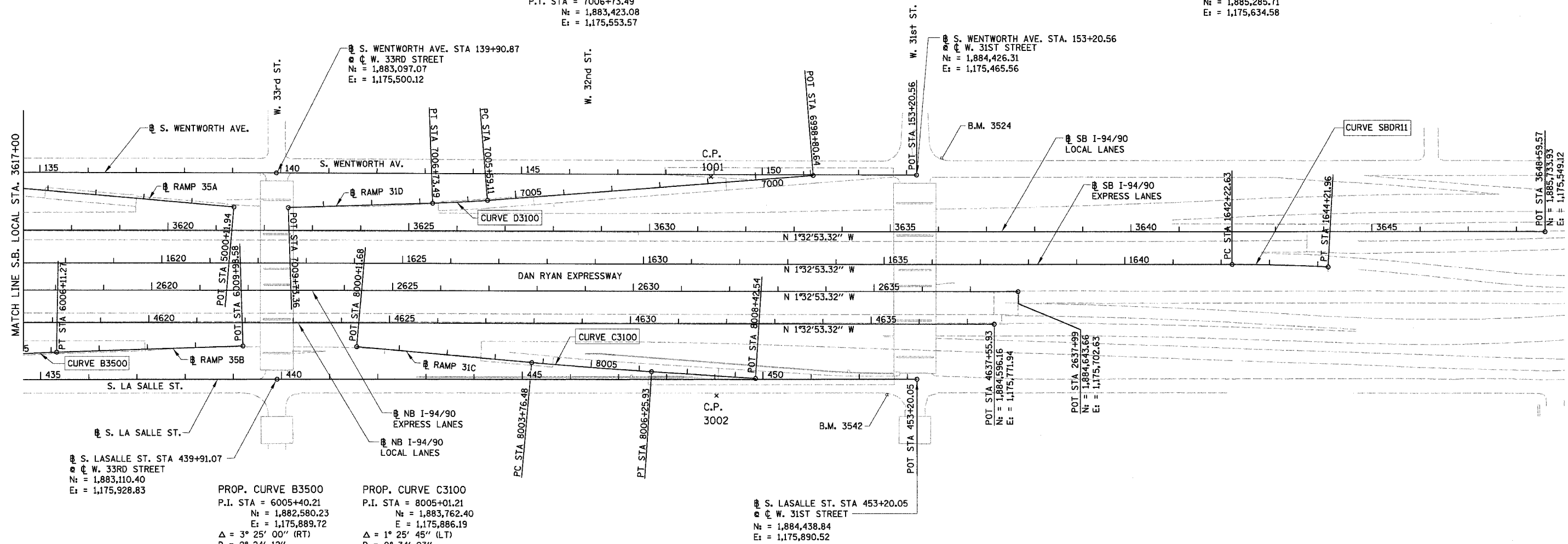
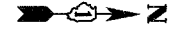


F.A.I.	SECTION	COUNTY	TOTAL SHEETS	SHEET NO.
94/90		COOK	565	45
STA. 3617+00.00		TO STA.		
FED. ROAD DIST. NO.	ILLINOIS	FED. AID PROJECT		
62301 * (2021-922 PT2 ETC 2324.6-1P) R-10				

PROP. CURVE D3100
P.I. STA = 7006+16.31
N_c = 1,883,480.18
E_c = 1,175,550.12
Δ = 2° 35' 11" (RT)
D = 2° 15' 40"
R = 2,534.00'
T = 57.20'
L = 114.38'
E = 0.65'
e = 2.6%
S.A. = STA 7005+43.11
TO 7005+63.11
S.R. = STA 7006+69.49
TO 7006+89.49
P.C. STA = 7005+59.11
N_c = 1,883,537.06
E_c = 1,175,544.09
P.T. STA = 7006+73.49
N_c = 1,883,423.08
E_c = 1,175,553.57

PROP. CURVE SBDR11
P.I. STA = 1643+22.32
N_c = 1,885,186.06
E_c = 1,175,631.95
Δ = 3° 03' 18" (RT)
D = 1° 31' 57"
R = 3,738.57'
T = 99.69'
L = 199.33'
E = 1.33'
e = ±2.5% (MATCH EXISTING)
S.A. = STA 1641+95.99
TO 1642+35.95
S.R. = N/A
P.C. STA = 1642+22.63
N_c = 1,885,086.40
E_c = 1,175,634.65
P.T. STA = 1644+21.96
N_c = 1,885,285.71
E_c = 1,175,634.58



S. LASALLE ST. STA 439+91.07
W. 33RD STREET
N_c = 1,883,110.40
E_c = 1,175,928.83

PROP. CURVE B3500
P.I. STA = 6005+40.21
N_c = 1,882,580.23
E_c = 1,175,889.72
Δ = 3° 25' 00" (RT)
D = 2° 24' 12"
R = 2,384.00'
T = 71.10'
L = 142.16'
E = 1.06'
e = 2.7%
S.A. = STA 6004+53.11
TO 6004+73.11
S.R. = STA 6006+07.27
TO 6006+27.27
P.C. STA = 6004+69.11
N_c = 1,882,509.63
E_c = 1,175,898.23
P.T. STA = 6006+11.27
N_c = 1,882,651.20
E_c = 1,175,895.43

PROP. CURVE C3100
P.I. STA = 8005+01.21
N_c = 1,883,762.40
E_c = 1,175,886.19
Δ = 1° 25' 45" (LT)
D = 0° 34' 23"
R = 10,000.00'
T = 124.73'
L = 249.45'
E = 0.78'
P.C. STA = 8003+76.48
N_c = 1,883,637.89
E_c = 1,175,878.68
P.T. STA = 8006+25.93
N_c = 1,883,887.05
E_c = 1,175,890.60

S. LASALLE ST. STA 453+20.05
W. 31ST STREET
N_c = 1,884,438.84
E_c = 1,175,890.52

- NOTES:**
- AVERAGE GRID TO GROUND CONVERSION
FACTOR = 1.000010988654360
 - FOR BENCH MARK INFORMATION, SEE SHEET ALT-16 OF ALIGNMENT PLAN SHEETS.
 - FOR RAMP P.O.T. INFORMATION, SEE SHEET ALT-16 OF ALIGNMENT PLAN SHEETS.

REVISIONS	
NAME	DATE

ILLINOIS DEPARTMENT OF TRANSPORTATION
F.A.I. 94/90 (DAN RYAN EXPRESSWAY)
GARFIELD BLVD TO 31ST STREET (NB LOCAL LANES)

ALIGNMENT PLAN

SCALE: 1"=100'
DATE: 06/09/06
DRAWN BY: JDC
CHECKED BY: RS

BOWMAN, BARRETT & ASSOCIATES INC.
CONSULTING ENGINEERS
Chicago, Illinois
312.228.0100
www.bbainc.com



6/7/2006 2:07:43 PM ALT-11