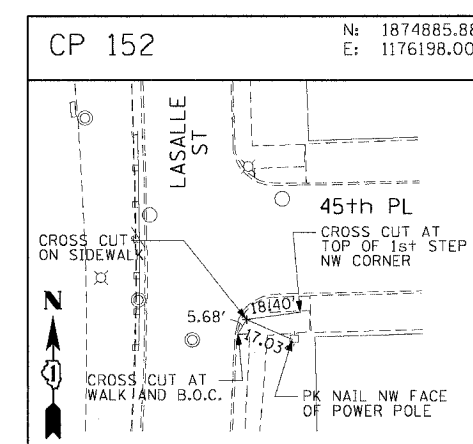
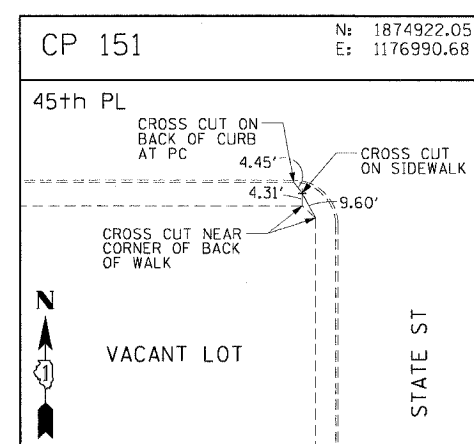
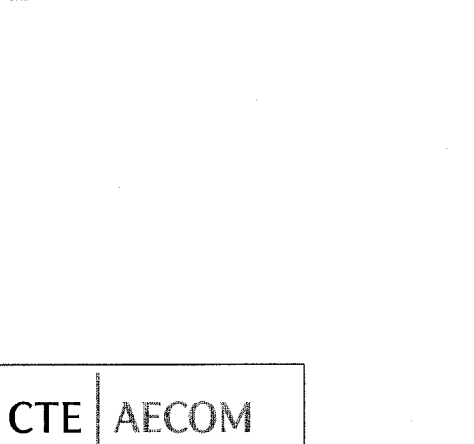
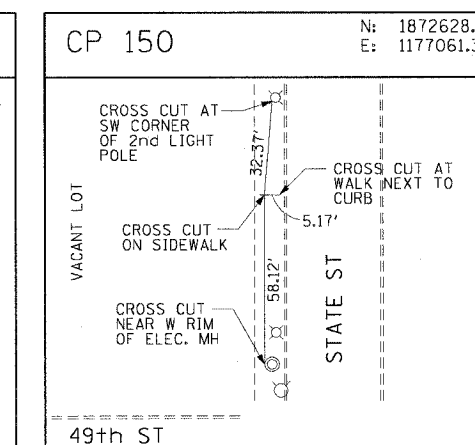
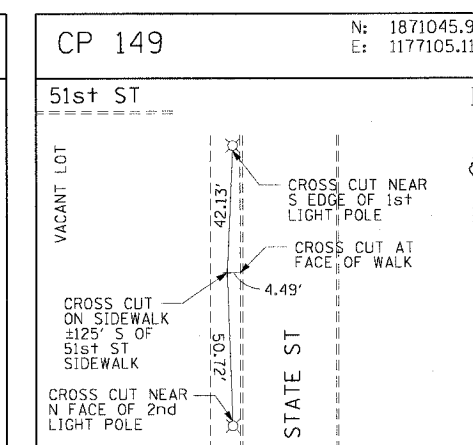
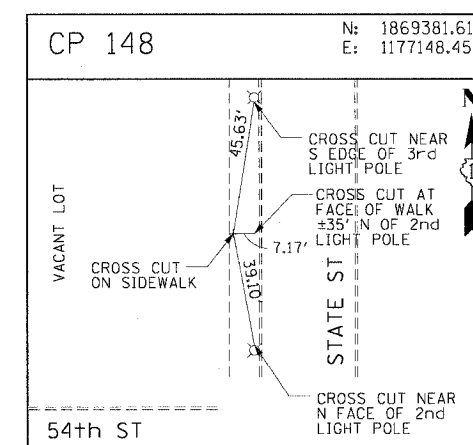
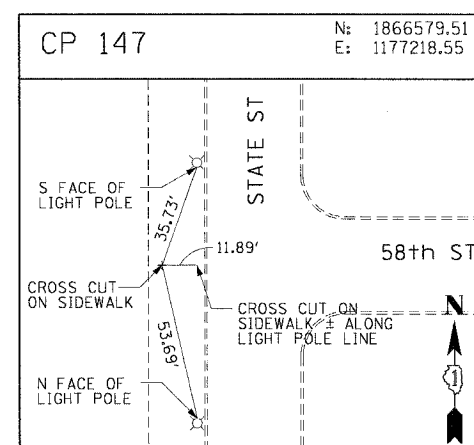
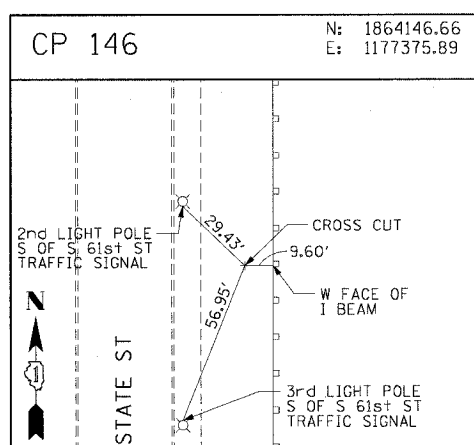
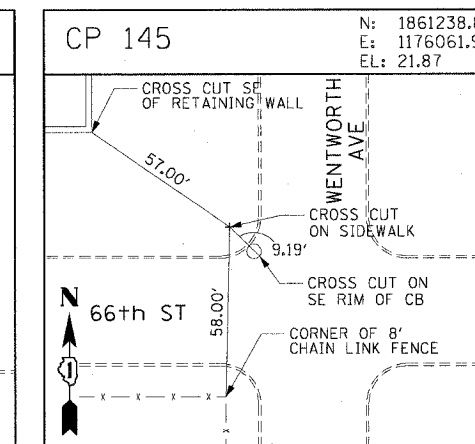
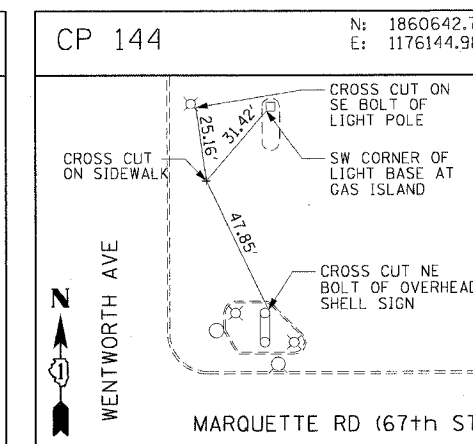
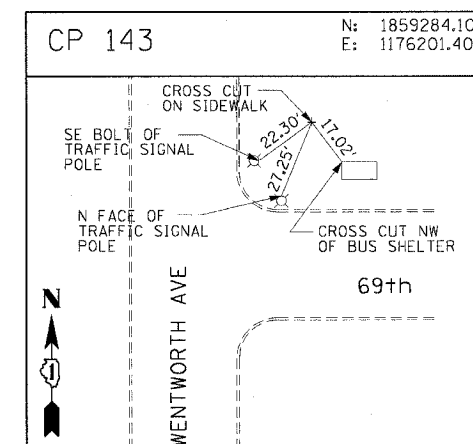
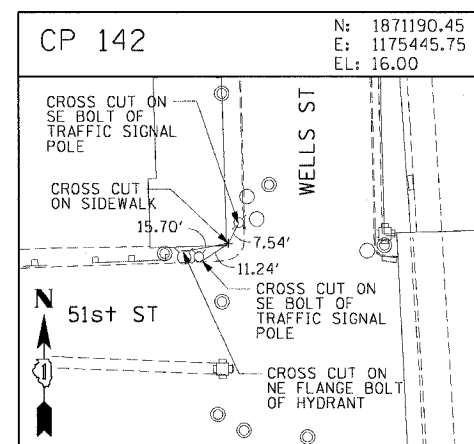
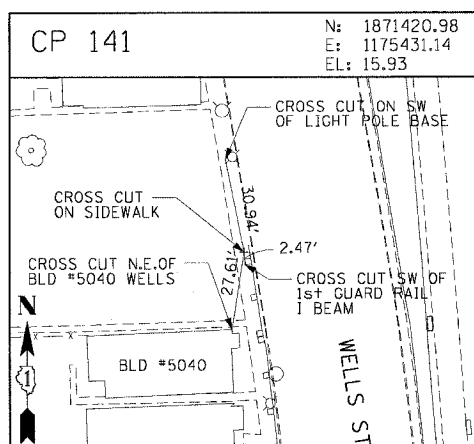
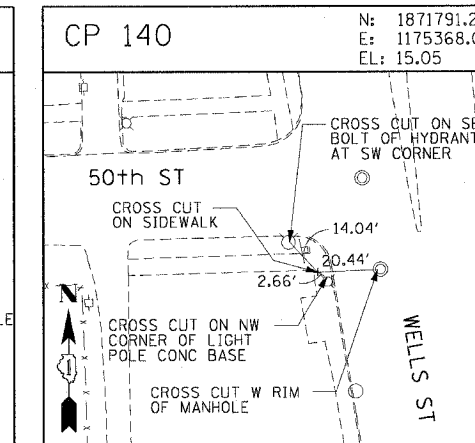
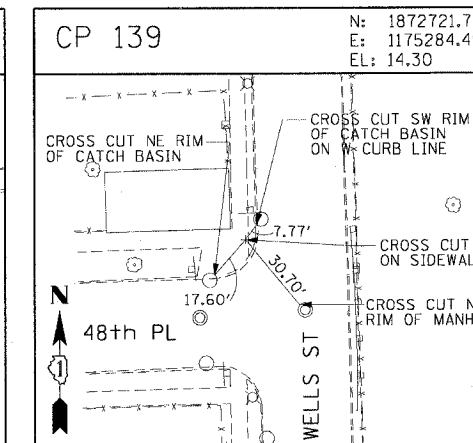
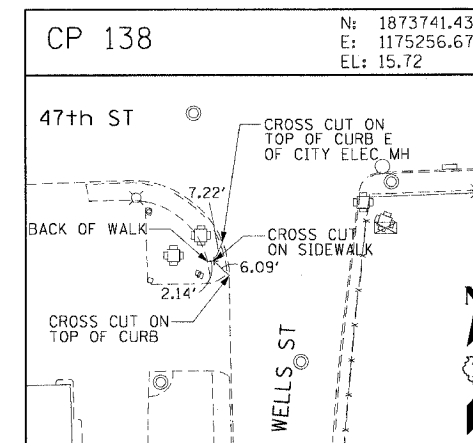
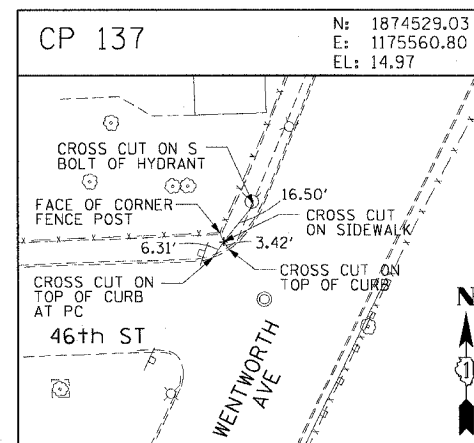
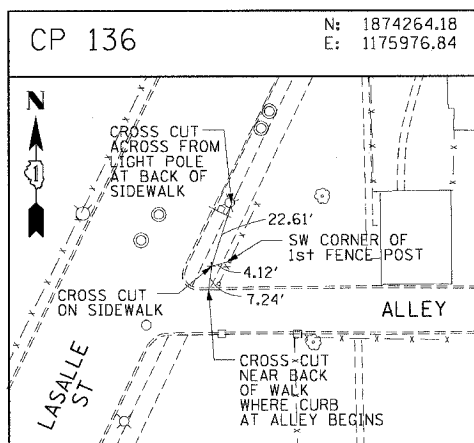


F.A.I. RTE.	SECTION	COUNTY	TOTAL SHEETS	SHEET NO.
90/94	*	COOK	565	48
STA.		TO STA.		
FED. ROAD DIST. NO. 1 ILLINOIS FED. AID PROJECT				
62301 * (2021-922 PT2 ETC 2324.6-IP) R-10				



CTE | AECOM

REVISIONS	
NAME	DATE

ALT-14
ILLINOIS DEPARTMENT OF TRANSPORTATION
F.A.I. 90/94 (DAN RYAN EXPRESSWAY)
GARFIELD BLVD TO 31ST STREET (NB LOCAL LANES)
SURVEY TIES AND CONTROL POINTS
SCALE: 1"=30'
DATE: June 9, 2006
DRAWN BY: MRK
CHECKED BY: JAL

P:\40465\CH11\2-cnts-18 & 19\31st\ctrl-18\032517.dwg 1:46:05 PM 6/7/2006