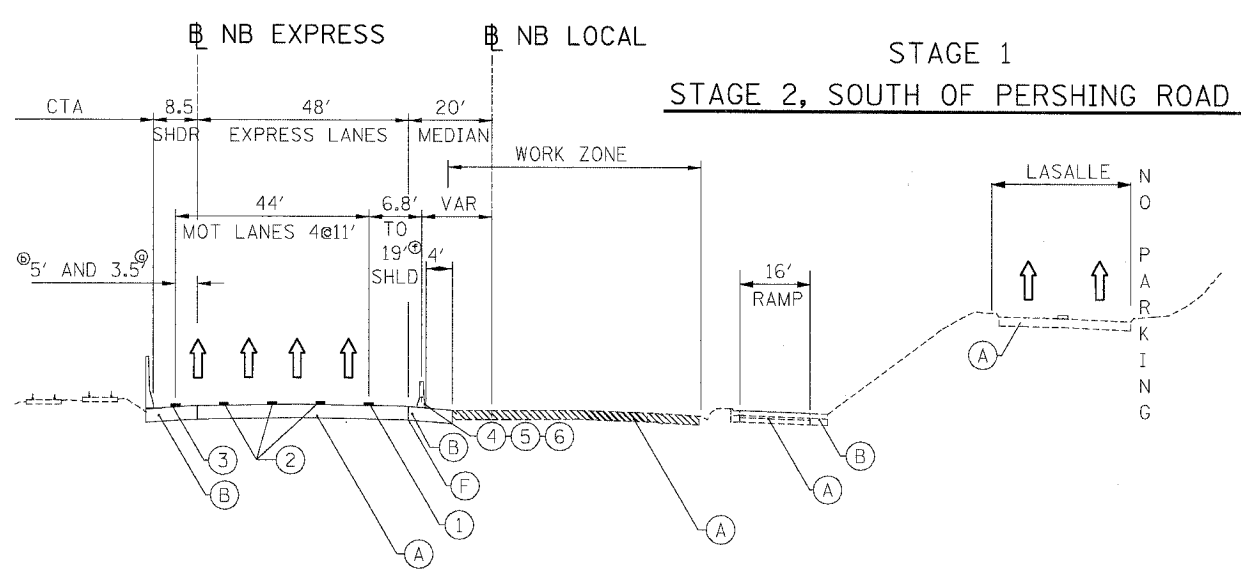
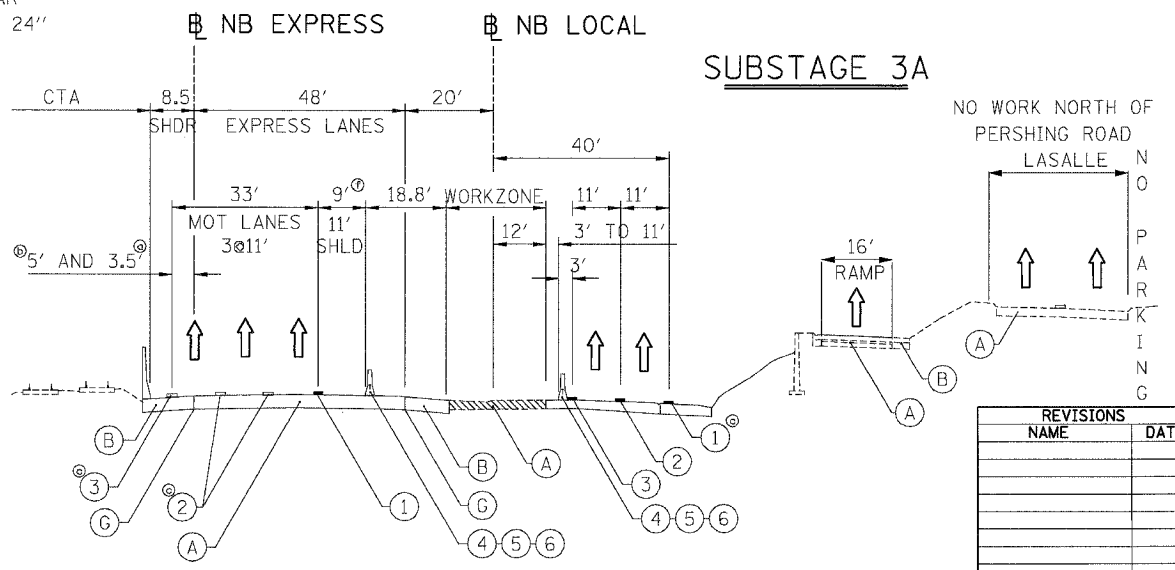
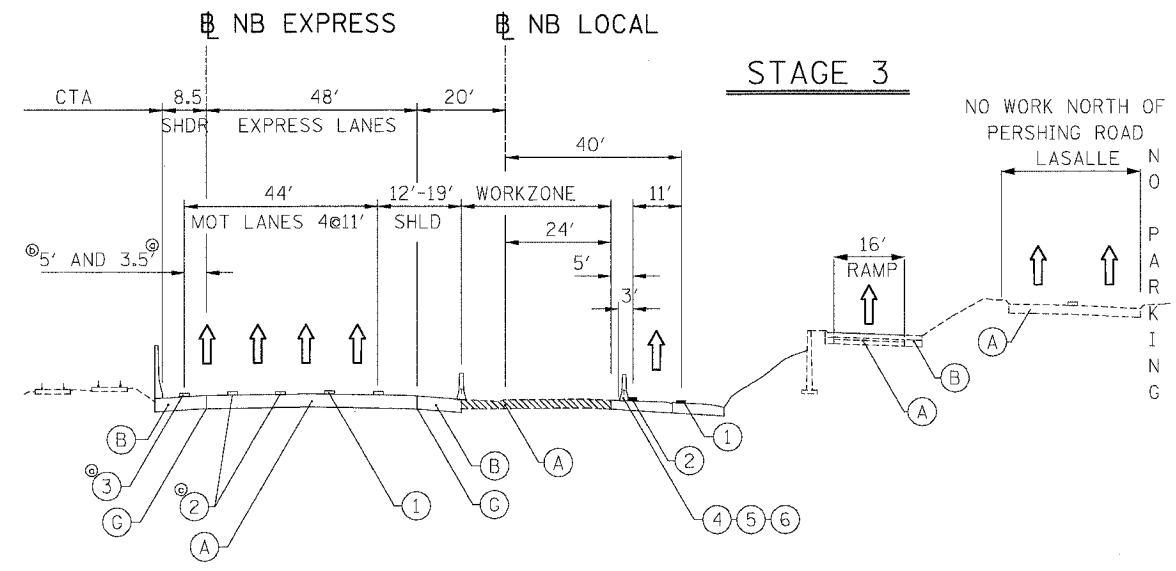
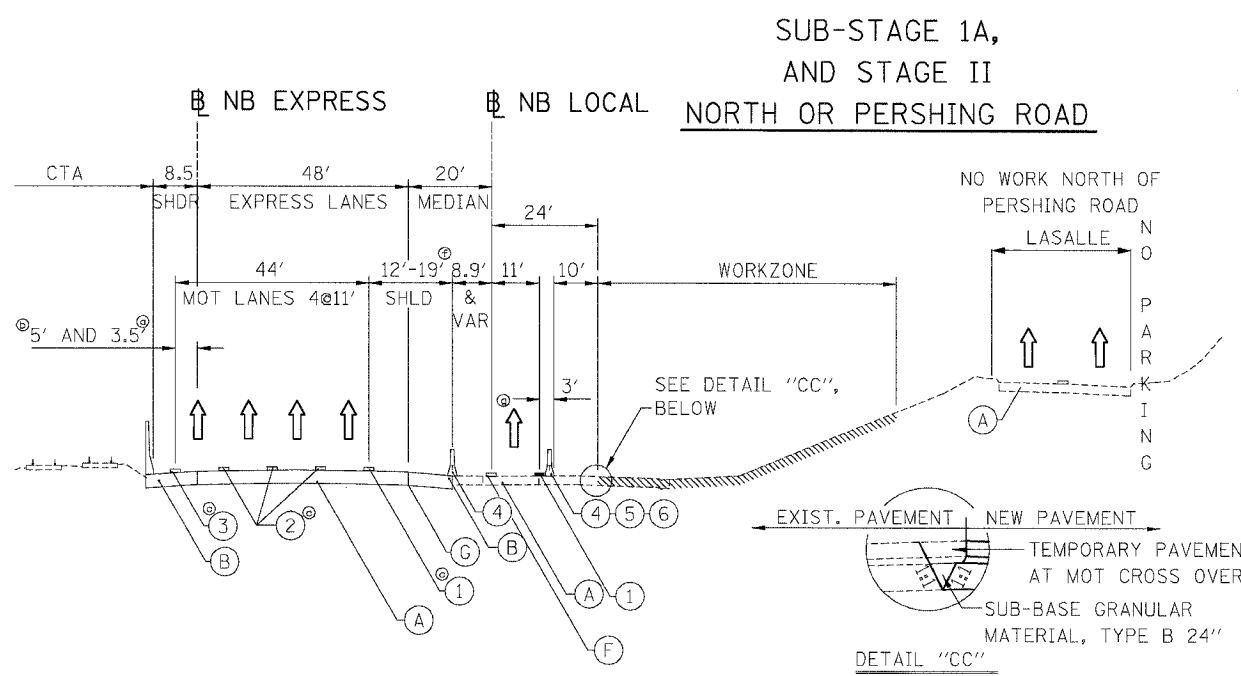
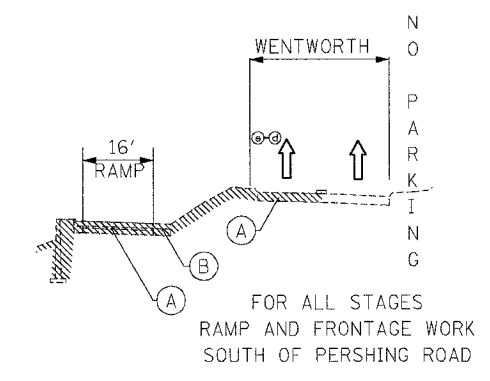


F.A.I.	SECTION	COUNTY	TOTAL SHEETS	SHEET NO.
94/90	*	COOK	565	82
STA.	TO STA.			
FED. ROAD DIST. NO.	ILLINOIS	FED. AID PROJECT		
62301 • (12021-922 PT2 ETC 2324.6-1P) R-10				



STATION RANGE AND NOTES

- Ⓞ 5' STA 2529+20.2 TO 2606+00.0
STA 2625+00.0 TO 2636+19.9
- Ⓞ 3.5' STA 2608+89.0 TO 2623+00.0
- Ⓞ TEMPORARY PAVEMENT MARKINGS INSTALLED IN STAGE I
- Ⓞ MILLING AND RESURFACING ADJACENT TO THE RAMP SHALL BE DONE DURING OFF PEAK HOURS. 2 LANES OF TRAFFIC SHOULD BE OPEN DURING PEAK HOURS.
- Ⓞ FRONTAGE ROAD WORK:
STAGE I STA 4529+91.0 TO 4534+59.3
STA 4578+95.0 TO 4582+24.5
STAGE 2 STA 4551+20.4 TO 4563+52.5
STAGE 3 AND SUBSTAGE 3A
STA 4551+20.4 TO 4556+06.0
- Ⓞ STAGE I AND SUBSTAGE IA
6.8' STA 2529+20.0 TO 2543+37.0
12' STA 2554+00.0 TO 2567+59.0
STA 2581+35.0 TO 2600+48.8
19' STA 2601+28.5 TO 2607+00.0
17.6' STA 2608+89.0 TO 2623+00.0
19' STA 2625+00.0 TO 2628+00.0
- Ⓞ STAGE 2
6.8' STA 2529+20.0 TO 2543+37.0
12' STA 2568+90.0 TO 2594+88.6
19' STA 2604+11.5 TO 2607+00.0
17.6' STA 2608+89.0 TO 2623+00.0
19' STA 2625+00.0 TO 2628+00.0
- Ⓞ STAGE 3
6.8' STA 2529+20.0 TO 2546+27.0
12' STA 2563+34.0 TO 2623+00.0
13.5' STA 2625+00.0 TO 2631+34.0
- Ⓞ 6.8' STA 4604+54.0 TO 4625+00.0



- | | |
|-----------------------------|--|
| EXISTING | PROPOSED |
| (A) PAVEMENT | (1) PAVEMENT MARKING-LINE 4" (WHITE) |
| (B) SHOULDER | (2) PAVEMENT MARKING-LINE 5" (WHITE SKIP DASH) |
| (C) EXISTING BARRIER WALL | (3) PAVEMENT MARKING-LINE 4" (YELLOW) |
| (D) TEMPORARY BARRIER WALL | (4) TEMPORARY CONCRETE BARRIER |
| (E) TEMPORARY PAVEMENT | (5) TEMPORARY PAVEMENT MARKING - LINE 6" |
| (F) PAVEMENT-SHOULDER JOINT | (6) MONODIRECTIONAL PRISMATIC BARRIER REFLECTOR |
| | (7) DRUM OR BARRICADE TYPE II WITH STEADY BURN LIGHT |

BOWMAN, BARRETT & ASSOCIATES INC
CONSULTING ENGINEERS
Chicago, Illinois
312.228.0100
www.bbainc.com

REVISIONS	
NAME	DATE

ILLINOIS DEPARTMENT OF TRANSPORTATION
F.A.I. 94/90 (DAN RYAN EXPRESSWAY)
GARFIELD BLVD TO 31ST STREET (NB LOCAL LANES)

MOT TYPICAL SECTIONS

SCALE: NTS
DATE: 06/09/06

DRAWN BY: RA
CHECKED BY: RS

MTTS-02

6/7/2006