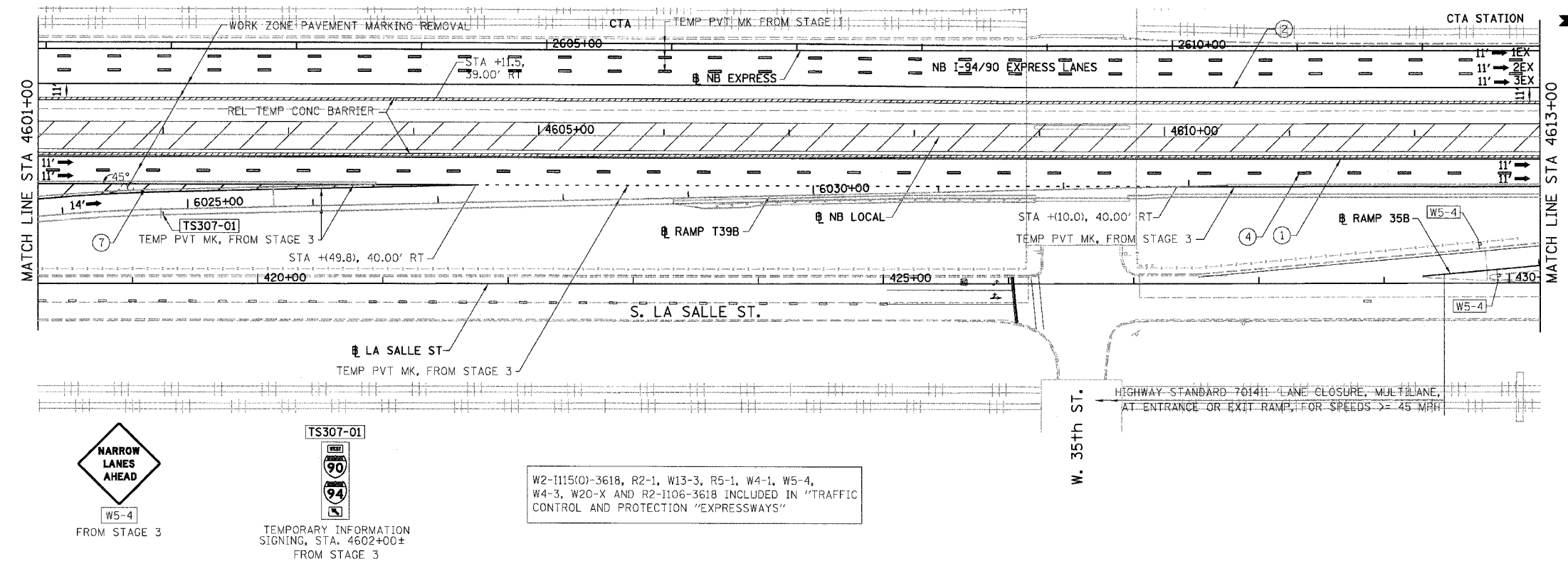
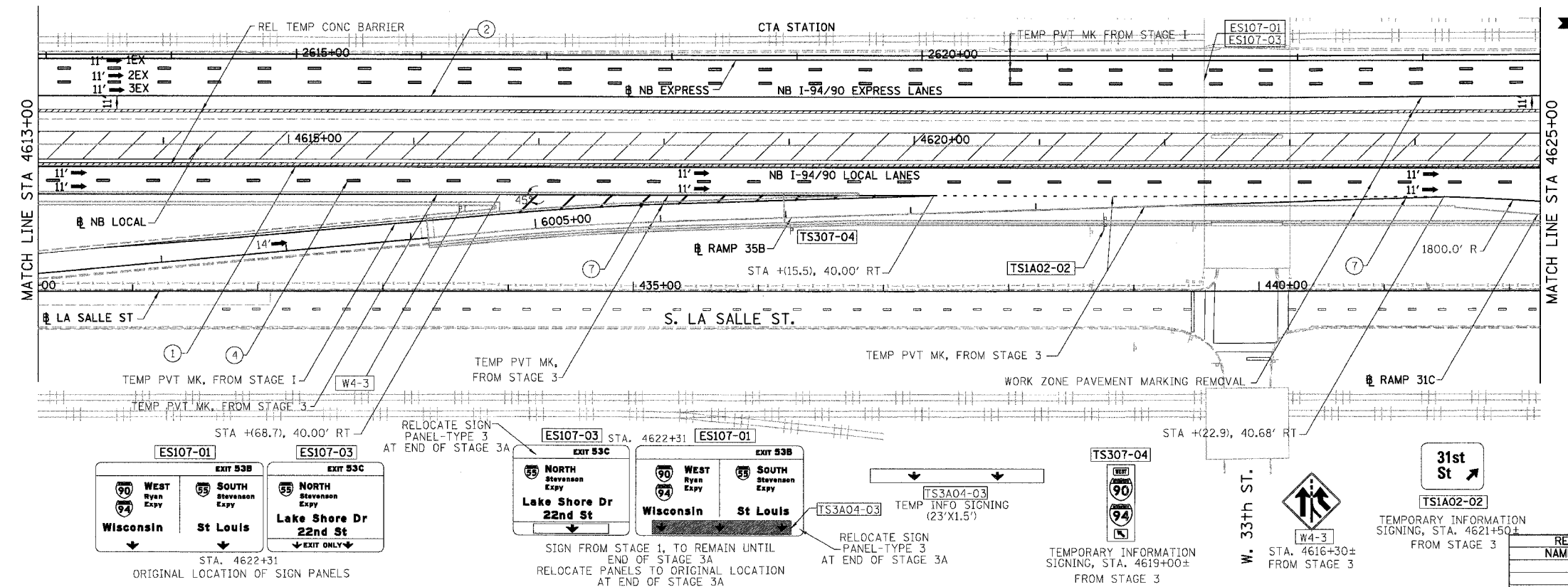


F.A.I.	SECTION	COUNTY	TOTAL SHEETS	SHEET NO.
94/90	*	COOK	565	112
STA.		TO STA.		
FED. ROAD DIST. NO.		ILLINOIS FED. AID PROJECT		
62301		*(2021-922 PT2 ETC 2324.6-1P) R-10		



- LEGEND:**
- 1 → LANE NUMBER AND DIRECTION OF TRAFFIC
 - ▨ WORK AREA
 - ▨ TEMPORARY PAVEMENT
 - ∞ IMPACT ATTENUATORS, TEMPORARY (NON-REDIRECTIVE), TEST LEVEL 3
 - DRUM OR BARRICADE TYPE II WITH STEADY BURNING LIGHT
 - ⊥ BARRICADE TYPE III
 - ▨ TEMPORARY CONCRETE BARRIER
 - ① LINE 4" (YELLOW EDGE)
 - ② LINE 4" (WHITE EDGE)
 - ③ LINE 4" (SKIP DASH, 6' SKIP - 2' DASH, WHITE)
 - ④ LINE 5" (SKIP DASH, 30' SKIP - 10' DASH, WHITE)
 - ⑤ LINE 8" (WHITE GORE LINE)
 - ⑥ LINE 8" (SKIP DASH, 12' SKIP - 3' DASH, WHITE)
 - ⑦ LINE 12" (DIAGONAL, 30' C-C, WHITE)
 - ⑧ LETTERS AND SYMBOLS
 - [ES-XXX-XX] EXISTING OVERHEAD OR CANTILEVER SIGNS
 - [GS-XXX-XX] EXISTING POST MOUNTED SIGNS
 - [TS-XXX-XX] TEMPORARY SIGNS
- +XX.XX STATION PROVIDED FROM THE ± SB I-90/94 EXPRESS LANES
 (+XX.XX) STATION PROVIDED FROM THE ± SB I-90/94 LOCAL LANES



- NOTES:**
- SEE SHEET MOTTS-01 FOR TYPICAL SECTIONS.
 - SEE TEMPORARY SIGN PANEL SHEETS FOR DETAILS.
- REVISIONS**
- | NAME | DATE |
|------|------|
| | |
| | |
| | |
| | |
- MOT-3A04

BOWMAN, BARRETT & ASSOCIATES INC.
 CONSULTING ENGINEERS
 Chicago, Illinois
 312.228.0100
 www.bbainc.com

NB I-94/90 EXPRESS LANES TEMPORARY PAVEMENT MARKINGS WERE INSTALLED IN STAGES 1, 2, SUBSTAGE 1A, AND STAGE 3, UNLESS OTHERWISE SPECIFIED IN SUBSTAGE 3A.

ILLINOIS DEPARTMENT OF TRANSPORTATION
 F.A.I. 94/90 (DAN RYAN EXPRESSWAY)
 GARFIELD BLVD TO 31ST STREET (NB LOCAL LANES)
 SUGGESTED STAGES OF CONSTRUCTION
 AND TRAFFIC CONTROL
 SUBSTAGE 3A

SCALE: 1"=50'
 DATE: 06/09/06
 DRAWN BY: RA
 CHECKED BY: RS