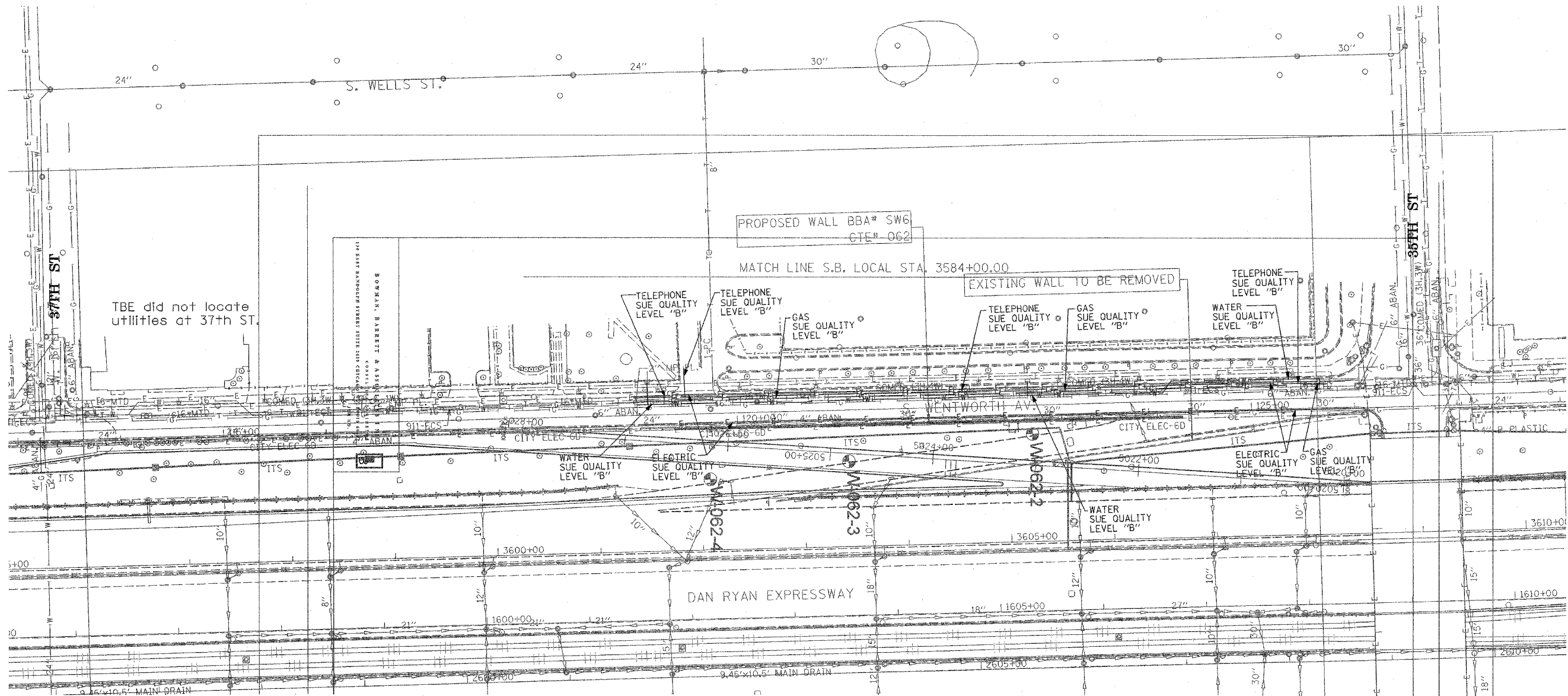


F.A. RTE.	SECTION	COUNTY	TOTAL SHEETS	SHEET NO.
90/94	2007 AND PTD ETC 2008 & 90-10	Cook	565	198
STA.		TO STA.		
FED. ROAD DIST. NO.		ILLINOIS FED. AID PROJECT		




TBE did not locate utilities at 37th ST.

TBE could not locate buried utilities directly beneath the expressway due to traffic and safety issues.

**TBE** CIVIL ENGINEERING \* TRANSPORTATION \* ENVIRONMENTAL \* PLANNING \* UTILITY ENGINEERING/LOCATING  
 SOUTHERN REGION: FL, GA, SC, NC  
 NORTHERN REGION: IL, IN, MI, OH, MD, NJ, NY  
 PA, VA, CANADA  
 WESTERN REGION: AZ, NV, NM, TX, CA, OR, UT, WA  
 IL09500164, 167, 168, 170, 171, 179, 180, 182, 204,  
 205, 206, 211, 212, 219, 221, 225, 226, 227, 228, 230, 232  
 TBE SUE PAGE NO: 34 of 36  
 Checked by: *[Signature]* E-1882  
 SUE Quality Level "A" : Test Holes  
 SUE Quality Level "B" : Designating

—TS—	—TS—	TRAFFIC SIGNAL
—SL—	—SL—	STREET LIGHT
—COCE—		CITY OF CHICAGO ELECTRIC
—T—	—T—	TELEPHONE
—W—	—W—	WATER
—G—	—G—	GAS
—CTV—	—CTV—	CABLE TELEVISION
—FO—	—FO—	FIBER OPTIC
—E—	—E—	ELECTRIC
⊙		TEST HOLE

Utilities shown on these plans as depicted in the legend have been investigated by TBE Group, Inc in accordance with SUE Industry Standards. All other information shown has been provided to TBE Group, Inc by others.

  
 205 W. WACKER DRIVE  
 SUITE 1020  
 CHICAGO, IL 60606  
 (312) 704-1970

REVISIONS	
NAME	DATE

ILLINOIS DEPARTMENT OF TRANSPORTATION  
 SUE Investigation of Underground Utilities  
 I-90/I-94 Dan Ryan Expressway from  
 I-57 to 69th Street  
 Contract Number: 62590, 62592, 62594  
 SOL "B" DATE : 7/22/04  
 DRAWN BY : KLC  
 SCALE : 1" = 50'