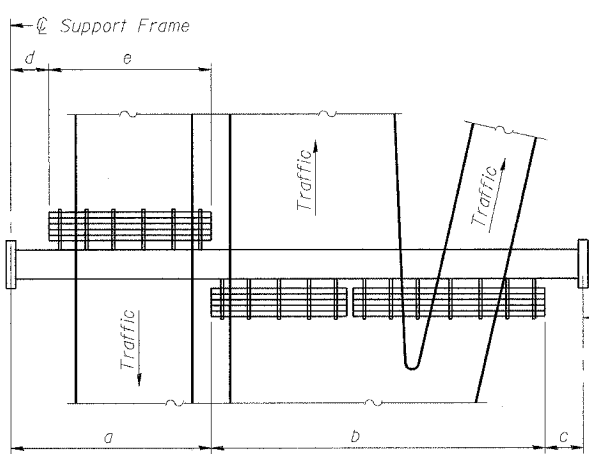
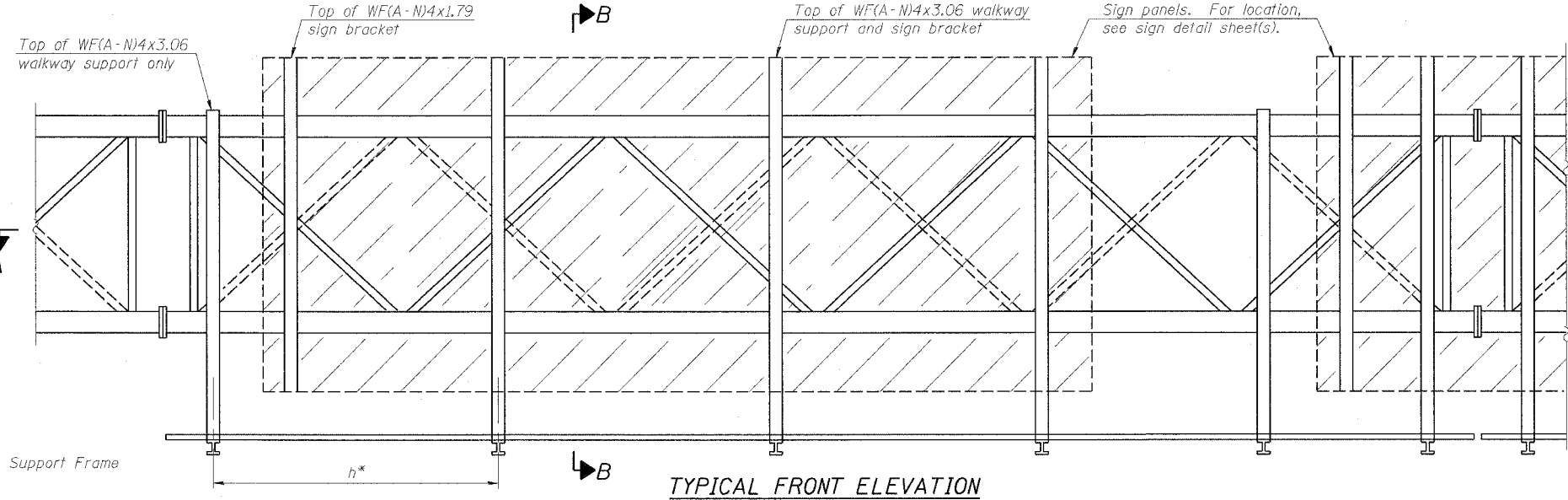


STATE OF ILLINOIS
DEPARTMENT OF TRANSPORTATION

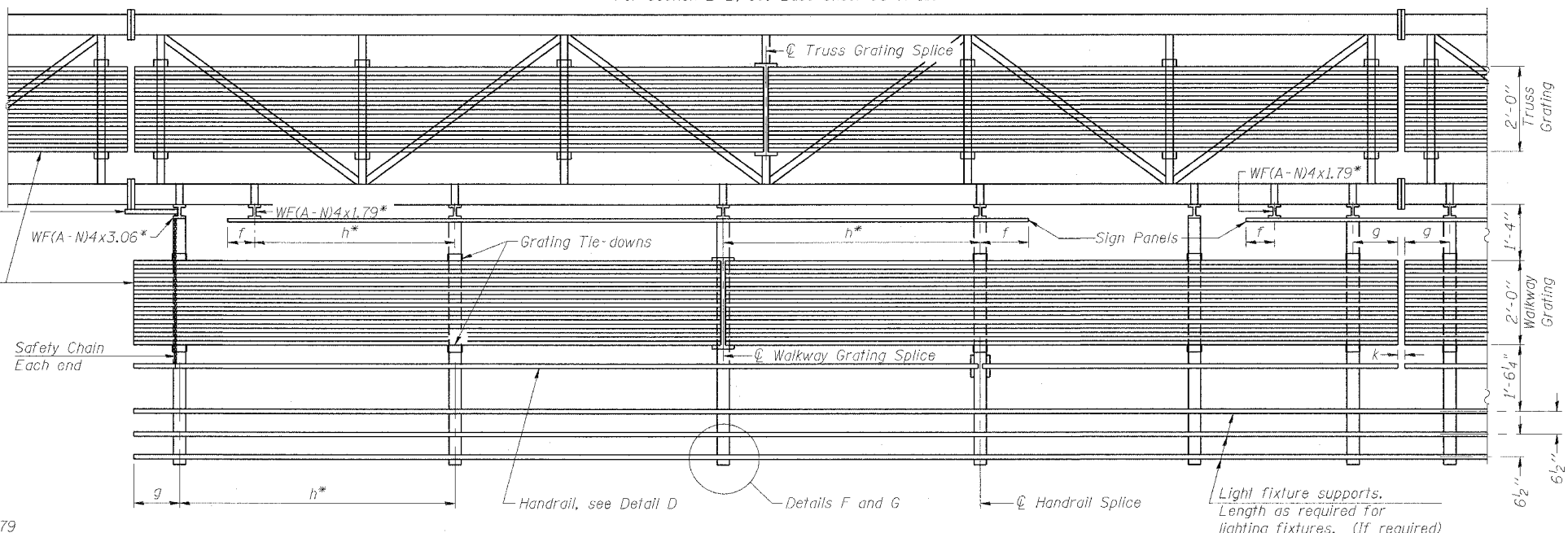
ROUTE NO.	SECTION	COUNTY	TOTAL SHEETS	SHEET NO.
F.A.I. RTE. 90/94		COOK	565	264
FED. ROAD DIST. NO. 1	ILLINOIS	FED. AID PROJECT-		
(1818, ETC, 2324, 6-1P) R-10				62301



PLAN
WALKWAY AND HANDRAIL SKETCH
(Road plan beneath truss varies)



TYPICAL FRONT ELEVATION
With lights and handrail omitted for clarity.
For Section B-B, see Base Sheet 05-A-10.



Walkway and Truss Grating width dimensions are nominal and may vary ±1/2" based on available standard widths.

BRACKET TABLE

WF(A-N)4x1.79 or WF(A-N)4x3.06 ASTM B308, Alloy 6061-T6		
Sign Width		Number Brackets Required
Greater Than	Less Than or Equal To	
	8'-0"	2
8'-0"	14'-0"	3
14'-0"	20'-0"	4
20'-0"	26'-0"	5
26'-0"	32'-0"	6

- Notes:
- * Space walkway brackets WF(A-N)4x3.06 and sign brackets WF(A-N)4x1.79 for efficiency and within limits shown:
 - f = 12" maximum, 4" minimum (End of sign to center of nearest bracket)
 - g = 12" maximum, 4" minimum (End of walkway grating to center of nearest support bracket)
 - h = 6'-0" maximum (center to center of sign and/or walkway support brackets, WF(A-N)4x1.79 or WF(A-N)4x3.06)
 - k = 2" maximum gap between adjacent walkway grating sections and handrail ends
 - ** If walkway bracket at safety chain location is behind sign, add angle to bracket, see Alternate Safety Chain Attachment on Base Sheet 05-A-11.

SECTION A-A
Handrail and walkway shall span a minimum of three brackets between splices and/or gap joints. Place all sign and walkway brackets as close to panel points as practical. Grating, handrail and light support splices placed as needed.

Truss grating to facilitate inspection shall run full length (center to center of support frames) ±12" on overhead trusses. Cost of truss grating is included in "Overhead Sign Structure".

Structure Number	Station	a	b	c	d	e	Walkway Grating and Handrail Lengths
ISO161094L057.3	4498+00.00	6.82'	41.00'	17.18'	---	---	41.00'
ISO161094L057.1	4506+75.00	7.36'	48.50'	12.15'	---	---	48.50'
ISO161094L056.9	4518+40.00	34.19'	46.25'	17.56'	---	---	46.25'
ISO161094L056.60	4535+80.00	5.50'	60.50'	8.06'	---	---	60.50'
ISO161094L056.43	4545+35.00	4.83'	56.00'	6.17'	---	---	56.00'
ISO161094L055.94	4571+00.00	4.88'	65.50'	7.63'	---	---	65.50'

DESIGNED - JSS	20
CHECKED - RDP	
DRAWN - JSS	
CHECKED - RDP	

EXAMINED	ENGINEER OF STRUCTURAL SERVICES
PASSED	

NUMBER	REVISION	DATE

OS-A-9 1-7-05

SGN-22

**OVERHEAD SIGN STRUCTURES
ALUMINUM WALKWAY DETAILS**

F.A.I. 90/94 (DAN RYAN EXPRESSWAY)
GARFIELD BLVD TO 31ST STREET (NB LOCAL LANES)
PROPOSED IMPROVEMENT
GARFIELD BLVD TO 31ST STREET

6/7/2006 11:30:43 AM P:\44488 Chn\B Chrs 18 & 19\Sign\Chn\18\Sign\SGN222222.dgn